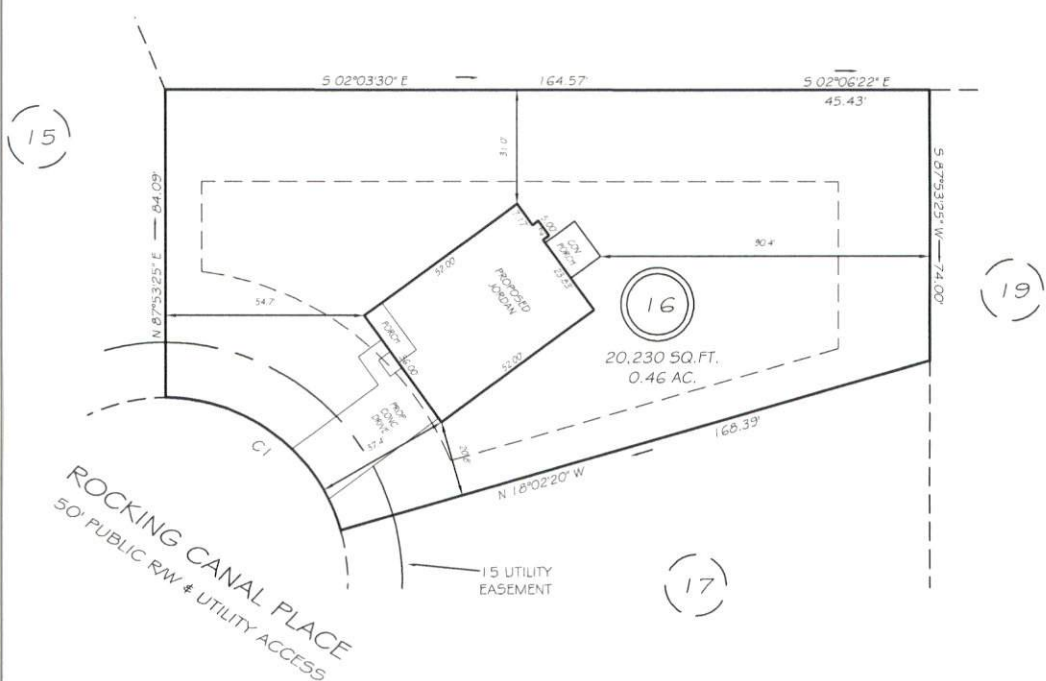


I, MICHAEL P. GRIFFIN, certify that under my direction and supervision this map was drawn from an actual field survey; that the error of closure of the survey as calculated by coordinates is 1: 10,000+; that the area shown hereon was calculated by coordinates.
 Witness my hand and seal this day of MONTH 2022.

BK 2022 PG 222-223
 HARNETT CO. REGISTRY

N/F
 DAVIS CHAPEL
 A.M.E. ZION CHURCH
 DB 3172 PG 842
 PB 2012 PG 511



IMPERVIOUS AREAS

HOUSE	2002 SQ. FT.
DRIVE & WALKS	683 SQ. FT.
PATIO	000 SQ. FT.
TOTAL	2685 SQ. FT.
ALLOWED	5252 SQ. FT.

SETBACKS

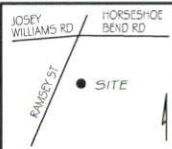
FRONT	35'
REAR	25'
SIDE	10'
CORNER SIDE	20'

CI R=50.00' L=64.64' N34°55'32\"/>

PRELIMINARY
 NOT FOR RECORDATION,
 SALES OR CONVEYANCE

LEGEND

EIP	EXISTING IRON PIPE	FES	FLARED END SECTION
IPS	IRON PIPE SET	WM	WATER METER
R/W	RIGHT OF WAY	CO	CLEAN OUT
N/F	NOW OR FORMERLY	FH	FIRE HYDRANT
EIS	EXISTING IRON STAKE	CB	CATCH BASIN



GLS GRIFFIN LAND SURVEYING, INC.
 P.O. BOX 148
 FUQUAY-VARINA, NC 27526
 (919) - 567 - 1963

PLOT PLAN
 FOR
H & H HOMES
 WILLIAMS FARM
 LOT 16
 ROCKING CANAL PLACE
 NORTH CAROLINA
 HARNETT CO. STEWART'S CREEK TOWNSHIP

DRAWN BY NMF	DATE 5/24/22
CHECKED BY MPG	SCALE 1" = 40'