

# JACKSON



Inventory Marked

COVER SHEET

## JACKSON REVISION LIST - STRUCTURAL:

- 1.) ADDED FRAMING AND FOUNDATION FOR 3 CAR GARAGE AND 1-CAR WITH SIDE LOAD
- 2.) EXTENDED NOOK BEAM, ADDED FRAMING FOR SECOND FLOOR OPTIONS (ADDED EXTRA JOISTS AND SHIFTED BEAMS AT FOYER WHERE REQUIRED)
- 3.) ADDED FRAMING AND FOUNDATION FOR SMALLER MASTER SUITE
- 4.) ADDED JOIST SERIES/SPACING
- 5.) RECONFIGURED CRAWL TO HAVE ALL JOISTS RUNNING FRONT TO BACK
- 6.) REMOVED PARTIAL CRAWL FRAMING FROM BASEMENT AND EXTENDED BASEMENT FRAMING BELOW KITCHEN
- 7.) CHANGED TO 2 x 6 HEADERS WHERE APPLICABLE (5-18)
- 8.) FLOORED OPTION FOR BONUS ROOM AND REVISED HEADER FOR FLOOR LOADS (5-18)
- 9.) ADDED HEADERS FOR FIREPLACE OPTIONS (5-18)
10. REMOVED BEAM FOR OLD MEDIA ROOM LOCATION (5-18)
- 11.) 2 x 6 GARAGE WING WALLS (5-18)
- 12.) MODIFIED STRAPPING NOTE FOR DOUBLE GARAGE DOOR (5-18)
- 13.) UPDATED STRUCTURAL NOTES (5-18)
- 14.) REMOVED ROOF TRUSSES BEARING AT REVISED SECOND FLOOR BATH LOCATION (5-18)
- 15.) CHANGED FRONT PORCH POSTS TO 6X6 FOR (3) PLY BEAM (2-19)
- 16.) ADDED MEDIA OPTION BACK - MOVED LVL ON SECOND FLOOR FRAMING, EXTRA JOIST, ATTIC FRAMING PLAN (2-19)
- 17.) CODE UPDATE TO 2018 NC IRC (2-19)
- 18.) CODE UPDATE TO 2018 SC IRC (1-16)
- 19.)
- 20.)
- 21.)
- 22.)
- 23.)
- 24.)
- 25.)
- 26.)
- 27.)
- 28.)
- 29.)
- 30.)

## JACKSON REVISION LIST - ARCHITECTURAL:

- 1.) BUMPED REAR KITCHEN WALL, BEDROOM #3/ STUDY NICHE WALL, AND REAR PORCH OUT 24" (ADDING S.F.)
- 2.) RECONFIGURED KITCHEN (REMOVED CABINETS FROM REAR WALL, ADDED WINDOW AND NEW ISLAND)
- 3.) COMBINED JACKSON-II (BASEMENT) AND REGULAR JACKSON INTO ONE DRAWING.
- 4.) ADDED OPTION FOR ONE-CAR GARAGE IN COMBINATION WITH SIDE-LOAD MAIN HOUSE GARAGE.
- 5.) ADDED OPTION FOR THREE-CAR GARAGE.
- 6.) ADDED STUDY OPTION WITH SMALLER MASTER SUITE (FIRST FLOOR).
- 7.) ADDED SECOND MASTER SUITE OPTION (SECOND FLOOR).
- 8.) MADE BEDROOM #5 STANDARD (LIKE ON OLD PRESIDENTIAL).
- 9.) MADE LOFT/ OPTIONAL MEDIA ROOM AN OPTION (SECOND FLOOR).
10. REMOVED C.O. AND WALLS BETWEEN NOOK AND FAMILY ROOM.
- 11.) ADDED WALK-IN SHOWER OPTION (FIRST FLOOR).
- 12.) ADDED CLOSET SHELVING NOTES.
- 13.) ADDED EXTERIOR LIGHTS TO ELEVATIONS.
- 14.) ADDED STANDARD CAN LIGHTING TO LOFT/ OPT. MEDIA ROOM (SECOND FLOOR)
- 15.) ADDED OPTIONAL CAN LIGHTING TO MASTER SUITE, FAMILY ROOM, AND HALLWAY UNDER BALCONY (FIRST FLOOR).
- 16.) ADDED OPTIONAL CAN LIGHTING TO SECOND MASTER SUITE (SECOND FLOOR).
- 17.) ADDED SHAKES TO FRONT GABLES ON ELEVATION A.
- 18.) ELIMINATED PARTIAL CRAWL SPACE FROM BASEMENT OPTION, FULL BASEMENT NOW.
- 19.) ADDED OPTIONAL BATH (ROUGH-IN) TO OPTIONAL BASEMENT.
- 20.) EXTENDED FRONT PORCH BY 2" TO LINE UP WITH CANTILEVER ABOVE. (11-17)
- 21.) ADDED MISSING DIMENSION TO MASTER TOILET ROOM (11-17)
- 22.) REVISED SECOND FLOOR SHARED BATH BY EXTENDING BEDROOM #3 W.I.C. AND PLACING VANITY ON OPPOSITE WALL, ELIMINATING DOOR FROM HALLWAY. (3-18)
- 23.) ADDED OPTION FOR DOOR TO SF SHARED BATH FROM HALLWAY (MADE BATH VANITY SMALLER). (3-18)
- 24.) ADDED OPTION FOR BONUS ROOM OVER FAMILY ROOM (FLOORED OVER). (3-18)
- 25.) ADDED OPTION FOR LOFT OVER FAMILY ROOM (FLOORED OVER). (3-18)
- 26.) MADE FIREPLACE OPTIONAL (THIRD FAMILY ROOM WINDOW NOW STANDARD.) (3-18)
- 27.) ADDED OPTION FOR FIREPLACE ON SECOND FLOOR IN OPT. BONUS ROOM/ LOFT (3-18)
- 28.) CREATED KITCHEN OPTION (SIMILAR TO OLD JACKSON PLAN). (3-18)
- 29.) REMOVED OLD LOFT/ MEDIA OPTION FROM PLAN. ORIGINALLY LOCATED IN FRONT OF BEDROOM #4 (3-18)
- 30.) ADDED OLD LOFT/ MEDIA OPTION BACK TO PLAN ONLY AS MEDIA ROOM OPTION (2-19)
- 31.) REMOVED ARCH OPENINGS AND REPLACED WITH C.O. (11-26-19)
- 32.) CHANGED FIREPLACES TO BE 32" FIREPLACE. (11-26-19)
- 33.) UPDATED AND VERIFY BATHROOM NAMING PER H&H STANDARDS. (11-26-19)
- 34.) UPDATED AND VERIFY SQUARE FOOTAGE. (11-26-19)
- 35.) ROOF VENTING CALCULATIONS FOR EACH ELEVATION LAYOUT. (11-26-19)
- 36.) UPDATED HDR HGT FROM 6'10" TO 7'-0". (11-26-19)
- 37.) REMOVED KITCHEN OPTION. (11-26-19)
- 38.) ADDED ROOF VENT CALCULATIONS. (11-26-19)
- 39.) VERIFIED GORMET KITCHEN WAS ADDED. (1-16-20)
- 40.) CHANGED FIREPLACE FROM STANDARD TO OPTIONAL. (1-16-20)
- 41.) REMOVE GLASS INSERTS FROM GARAGE WINDOWS AND REMOVE METAL ACCESSORIES. (1-16-20)
- 42.) UPDATED CUTSHEETS. (1-16-20)
- 43.) UPDATED DOOR TO BATH 4 W/ OPTIONAL MEDIA ROOM TO 2/4 FROM 2/0 (1-16-20)

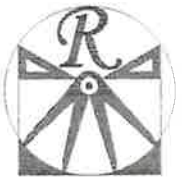
Oakmont 7a

H&H HOMES  
JACKSON

DATE: FEBRUARY 27, 2019  
REV: JANUARY 16, 2020  
DRAWN BY: WJG  
ENGINEERED BY:  
REVIEWED BY:

CS





**RENAISSANCE**  
RESIDENTIAL DESIGN, INC.  
4810 GLENMIST CT. | RALEIGH, NC 27612  
(919) 649-4128  
WWW.RRDCAROLINA.COM

"The art of transforming your vision into reality."  
RENAISSANCE RESIDENTIAL DESIGN, INC. RESERVES THE RIGHT TO MAKE MODIFICATIONS TO FLOOR PLANS, DIMENSIONS, MATERIALS AND SPECIFICATIONS WITHOUT NOTICE. THESE DRAWINGS ARE FOR THE PURPOSE OF CONVEYING AN ARCHITECTURAL CONCEPT ONLY.

RENAISSANCE RESIDENTIAL DESIGN, INC. HEREBY EXPRESSLY RESERVES ITS COMMON LAW COPYRIGHT AND OTHER PROPERTY RIGHTS IN THESE PLANS. THESE PLANS AND DRAWINGS ARE NOT TO BE REPRODUCED, CHANGED OR COPIED IN ANY FORM OR MANNER WITHOUT FIRST OBTAINING THE EXPRESS WRITTEN CONSENT OF RENAISSANCE RESIDENTIAL DESIGN, INC. NOR ARE THEY TO BE ASSIGNED TO ANY THIRD PARTY WITHOUT FIRST OBTAINING SAID WRITTEN PERMISSION AND CONSENT.

**J.S. THOMPSON**  
ENGINEERING, INC.  
600 WADE AVE., SUITE 104  
RALEIGH, NC 27605  
PHONE (919) 782-9910  
FAX (919) 782-9923  
N.C. LICENSE NO. C-1133



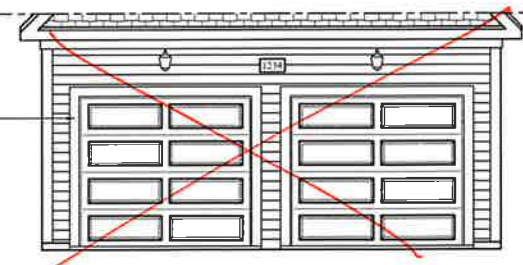
PRICES, PROMOTIONS, INCENTIVES, FEATURES, MATERIALS AND DIMENSIONS ARE SUBJECT TO CHANGE WITHOUT NOTICE. SQUARE FOOTAGE AND DIMENSIONS ARE ESTIMATED AND MAY VARY IN ACTUAL CONSTRUCTION. THE SITE PLAN AND LOT PLAN SHALL BE DETERMINED BY THE LOCAL PLANNING DEPARTMENT. FLOOR PLANS AND ELEVATION RENDERINGS ARE ARTIST CONCEPTIONS. FLOOR PLANS ARE THE COPYRIGHTED PROPERTY OF H&H HOMES. ANY USE, REPRODUCTION, OR MODIFICATION OF THESE DRAWINGS IS PROHIBITED. SEE NEW HOME SALES CONSULTANT FOR CURRENT DETAILS. COPYRIGHT © 2019 H&H HOMES



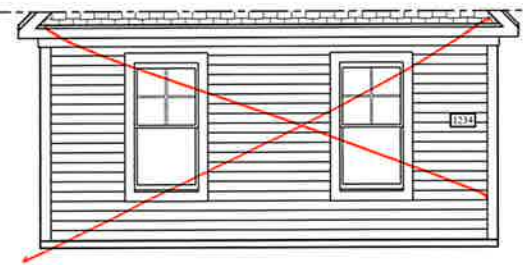
**FRONT ELEVATION-B**  
SCALE: 1/4" = 1'-0"  
*NO Grids*

*Colonial Raised Panel White garage door*

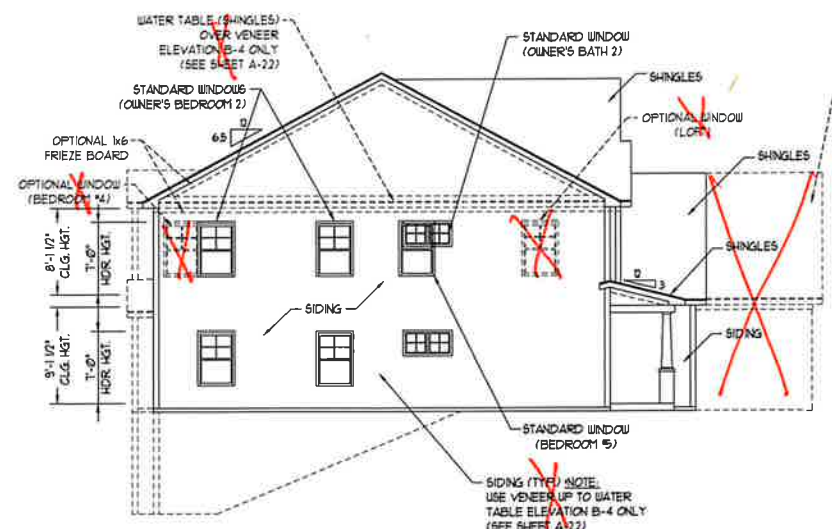
**\*\* NOTE: SEE PAGE A-21 FOR SPECIFIC FRONT ELEVATION-B DETAILS. SEE PAGE A-22 FOR B-4 (ALL BRICK) ELEVATIONS**



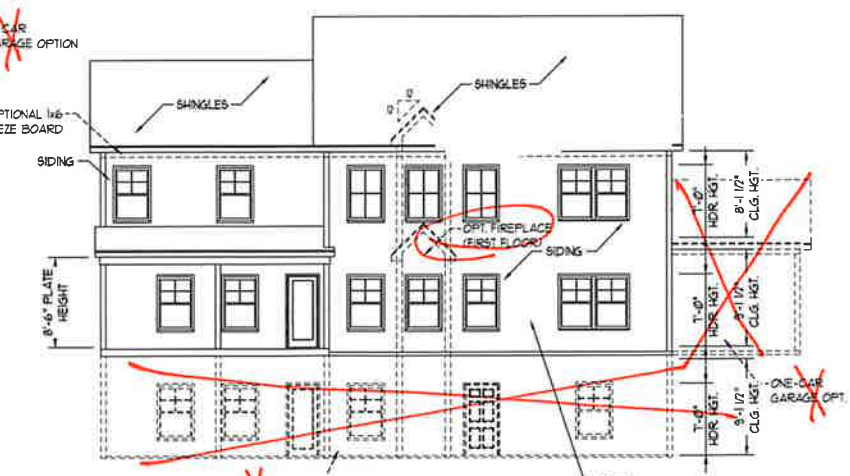
**DOUBLE GARAGE DOOR OPTION**  
SCALE: 1/4" = 1'-0"



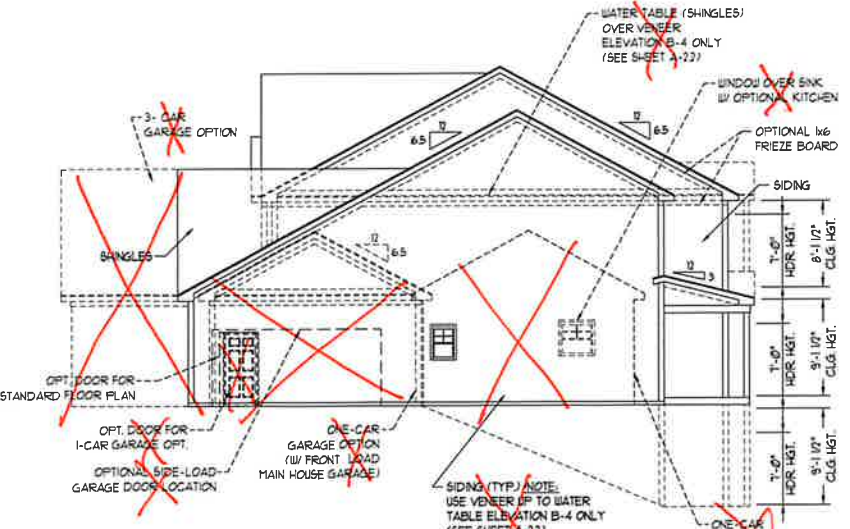
**SIDE LOAD GARAGE OPTION**  
SCALE: 1/4" = 1'-0"



**LEFT ELEVATION**  
SCALE: 1/8" = 1'-0"



**REAR ELEVATION**  
SCALE: 1/8" = 1'-0"

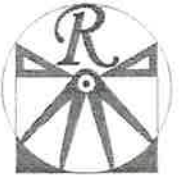


**RIGHT ELEVATION**  
SCALE: 1/8" = 1'-0"

**H&H HOMES, INC.**  
**JACKSON**

DATE: FEBRUARY 27, 2019  
REV: JANUARY 16, 2020  
SCALE: AS NOTED  
DRAWN BY: WG  
ENGINEERED BY: WLF  
REVIEWED BY: JES





**RENAISSANCE**  
RESIDENTIAL DESIGN, INC.  
4810 GLENMIST CT. | RALEIGH, NC 27612  
(919) 640-4128  
WWW.RRDCAROLINA.COM

"The art of transforming your vision into reality."  
RENAISSANCE RESIDENTIAL DESIGN, INC. HEREBY EXPRESSLY RESERVES ITS COMMON LAW COPYRIGHT AND OTHER PROPERTY RIGHTS IN THESE PLANS. THESE PLANS AND DRAWINGS ARE NOT TO BE REPRODUCED, CHANGED OR COPIED IN ANY FORM OR MANNER WITHOUT FIRST OBTAINING THE EXPRESS WRITTEN CONSENT OF RENAISSANCE RESIDENTIAL DESIGN, INC. NONE ARE TO BE ASSIGNED TO ANY THIRD PARTY WITHOUT FIRST OBTAINING SAID WRITTEN PERMISSION AND CONSENT.

**J.S. THOMPSON**  
**ENGINEERING, INC.**  
604 WADE AVE., SUITE 104  
RALEIGH, NC 27603  
PHONE: (919) 789-9915  
FAX: (919) 786-9923  
N.C. LICENSE NO. C-1733

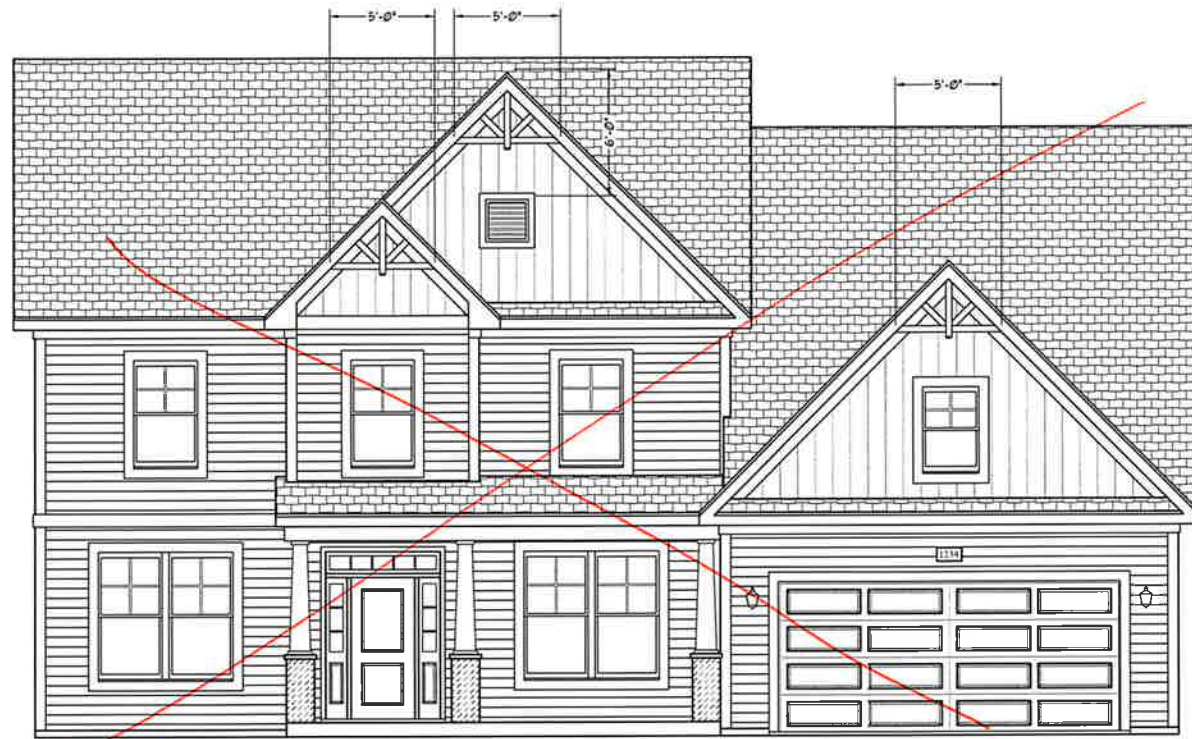


PRICES, PROMOTIONS, INCENTIVES, FEATURES, MATERIALS AND DIMENSIONS ARE SUBJECT TO CHANGE WITHOUT NOTICE. SQUARE FOOTAGE AND DIMENSIONS ARE ESTIMATED AND MAY VARY IN ACTUAL CONSTRUCTION. THESE PLANS AND DRAWINGS ARE NOT TO BE REPRODUCED, CHANGED OR COPIED IN ANY FORM OR MANNER WITHOUT FIRST OBTAINING THE EXPRESS WRITTEN CONSENT OF RENAISSANCE RESIDENTIAL DESIGN, INC. NONE ARE TO BE ASSIGNED TO ANY THIRD PARTY WITHOUT FIRST OBTAINING SAID WRITTEN PERMISSION AND CONSENT.

**H&H HOMES, INC.**  
**JACKSON**

DATE: FEBRUARY 27, 2019  
REV: JANUARY 16, 2020  
SCALE: AS NOTED  
DRAWN BY: WG  
ENGINEERED BY: WLF  
REVIEWED BY: JES

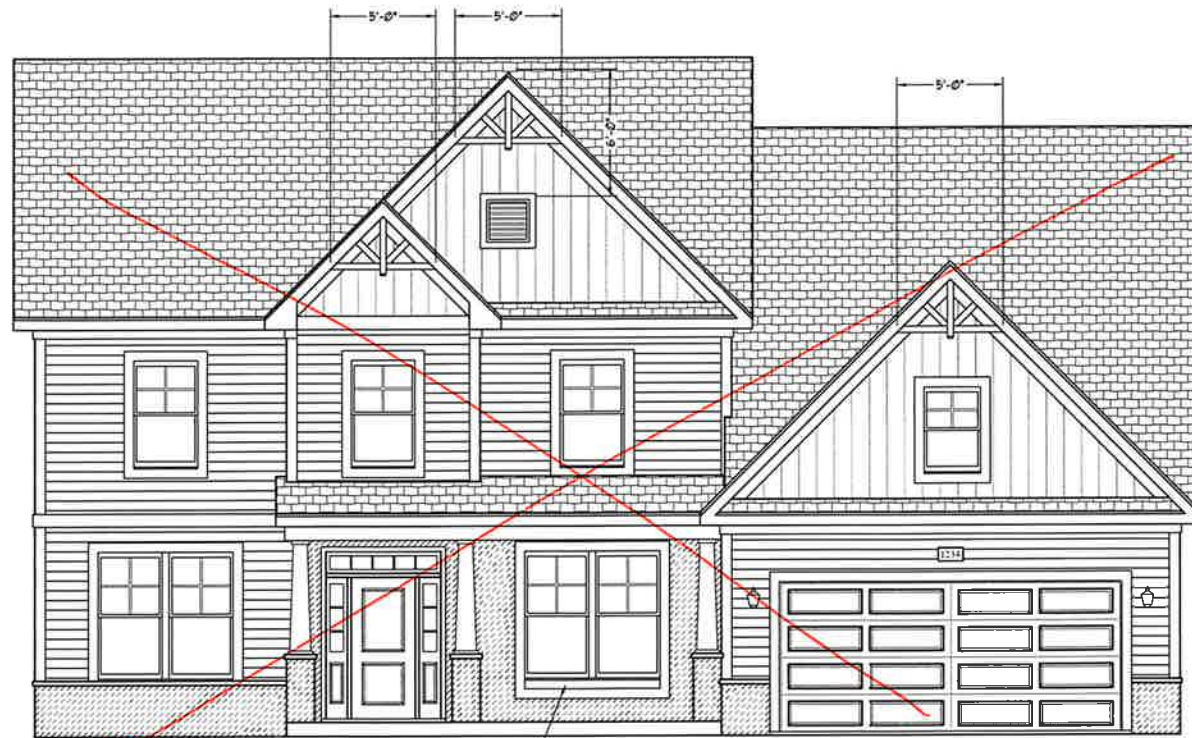
B - ELEVATION  
OPTIONS  
**A-2.1**



FRONT ELEVATION-B-1  
SCALE: 1/4" = 1'-0"

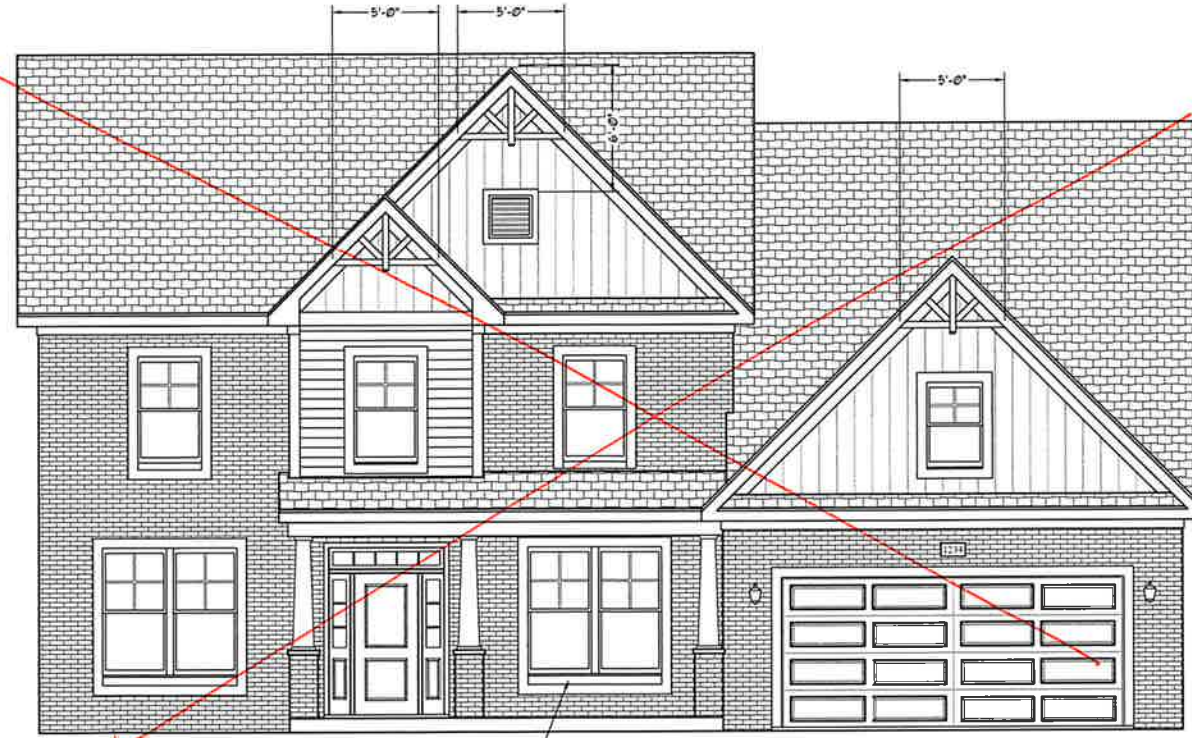


FRONT ELEVATION-B-2  
SCALE: 1/4" = 1'-0"



FRONT ELEVATION-B-3  
SCALE: 1/4" = 1'-0"

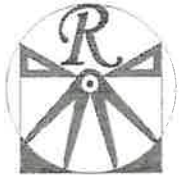
BRICK OR STONE  
LEDGE AS SPEC. (TYP.)



FRONT ELEVATION-B-4  
SCALE: 1/4" = 1'-0"

BRICK OR STONE  
LEDGE AS SPEC. (TYP.)





**RENAISSANCE**

RESIDENTIAL DESIGN, INC.

4810 GLENHURST CT. | RALEIGH, NC 27612

(919) 648-1128

WWW.RRDCAROLINA.COM

"The art of transforming your vision into reality."

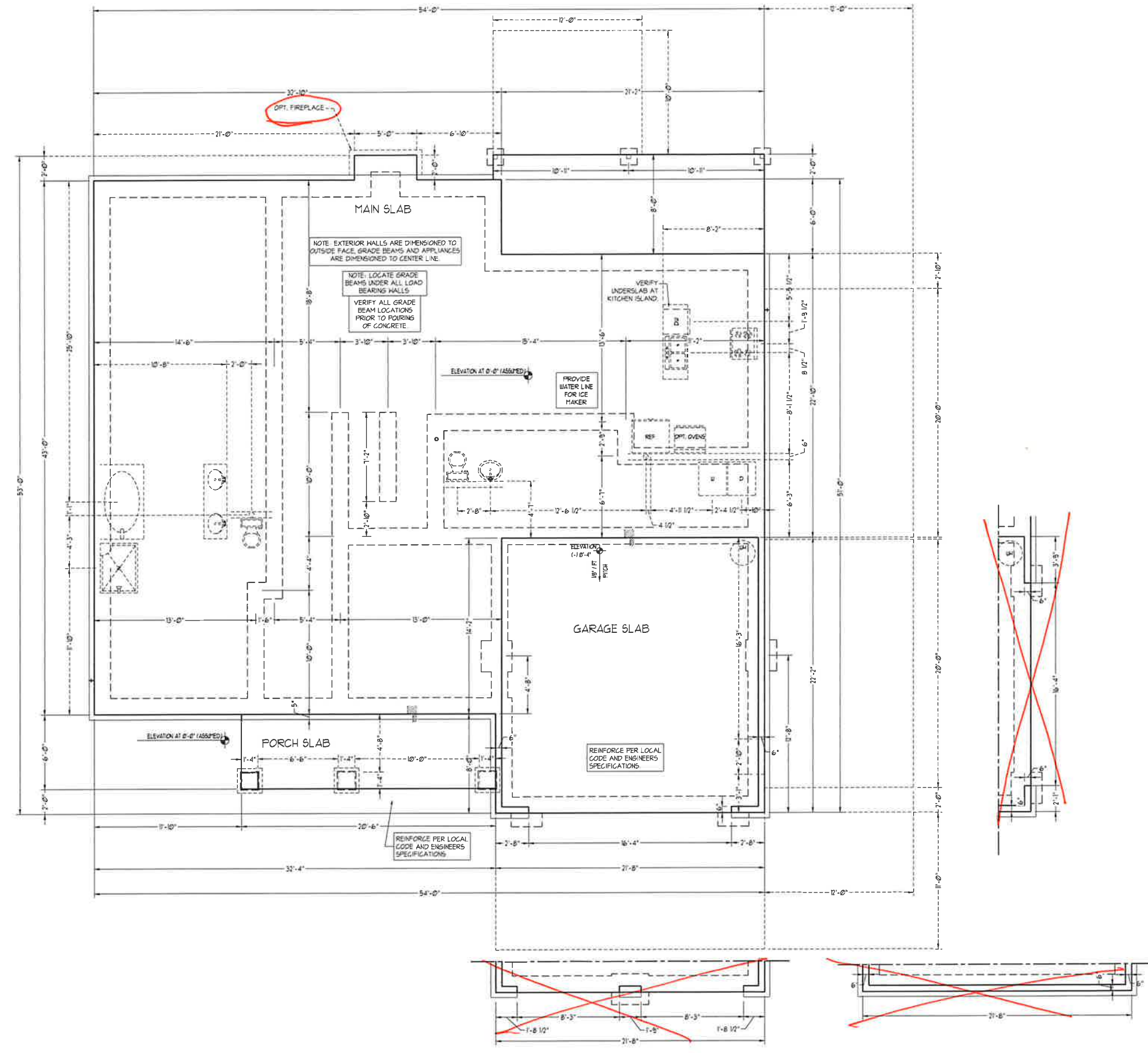
RENAISSANCE RESIDENTIAL DESIGN, INC. RESERVES THE RIGHT TO MAKE MODIFICATIONS TO FLOOR PLANS, DIMENSIONS, MATERIALS, AND SPECIFICATIONS WITHOUT NOTICE. THESE PLANS AND DRAWINGS ARE FOR THE PURPOSE OF CONVEYING AN ARCHITECTURAL CONCEPT ONLY.

RENAISSANCE RESIDENTIAL DESIGN, INC. HEREBY EXPRESSLY RESERVES ITS COMMON LAW COPYRIGHT AND OTHER PROPERTY RIGHTS IN THESE PLANS, THESE PLANS AND DRAWINGS ARE NOT TO BE REPRODUCED, CHANGED OR COPIED IN ANY FORM OR MANNER WITHOUT FIRST OBTAINING THE EXPRESS WRITTEN CONSENT OF RENAISSANCE RESIDENTIAL DESIGN, INC. NOR ARE THEY TO BE ASSIGNED TO ANY THIRD PARTY WITHOUT FIRST OBTAINING SAID WRITTEN PERMISSION AND CONSENT.

**J.S. THOMPSON**  
ENGINEERING, INC.  
400 WADE AVE., SUITE 104  
RALEIGH, NC 27605  
PHONE (919) 780-9919  
FAX (919) 782-9923  
N.C. LICENSE NO. C1733



PIRES, PROMOTIONS, INCENTIVES, FEATURES, OPTIONS, FLOOR PLANS, ELEVATIONS, DESIGNS, MATERIALS, FINISHES, DIMENSIONS, AND DIMENSIONS ARE ESTIMATED AND MAY VARY IN ACTUAL CONSTRUCTION. ACTUAL POSITION OF HOUSE ON LOT AND POSITION OF HOUSE ON LOT ARE NOT TO BE CONSIDERED. FLOOR PLANS AND ELEVATIONS DIMENSIONS ARE THE PROPERTY OF H&H HOMES. ANY USE, REPRODUCTION, OR MODIFICATION OF THESE PLANS WITHOUT THE WRITTEN PERMISSION OF H&H HOMES IS STRICTLY PROHIBITED. CURRENT DETAILS. COPYRIGHT © 2018 H&H HOMES



**H&H HOMES, INC.**  
JACKSON

DATE: FEBRUARY 27, 2019  
REV.: JANUARY 16, 2020  
SCALE: 1/4" = 1'-0"  
DRAWN BY: WJG  
ENGINEERED BY: WLF  
REVIEWED BY: JES

SLAB INTERFACE PLAN  
S-1





# RENAISSANCE

RESIDENTIAL DESIGN, INC.  
4810 GLENMIST CT., J. RALEIGH, NC 27612  
(919) 649-4128  
WWW.RRDCAROLINA.COM

"The art of transforming your vision into reality."

RENAISSANCE RESIDENTIAL DESIGN, INC. RESERVES THE RIGHT TO MAKE MODIFICATIONS TO FLOOR PLANS, DIMENSIONS, MATERIALS AND SPECIFICATIONS WITHOUT NOTICE. THESE DRAWINGS ARE FOR THE PURPOSES OF CONVEYING AN ARCHITECTURAL CONCEPT ONLY.

RENAISSANCE RESIDENTIAL DESIGN, INC. HEREBY EXPRESSLY RELEASES ITS COMMON LAW COPYRIGHT AND OTHER PROPERTY RIGHTS IN THESE PLANS. THESE PLANS AND DRAWINGS ARE NOT TO BE REPRODUCED, CHANGED, OR COPIED IN ANY FORM OR MANNER WITHOUT FIRST OBTAINING THE EXPRESS WRITTEN CONSENT OF RENAISSANCE RESIDENTIAL DESIGN, INC. NOR ARE THEY TO BE ASSIGNED TO ANY THIRD PARTY WITHOUT FIRST OBTAINING SAID WRITTEN PERMISSION AND CONSENT.

**J.S. THOMPSON ENGINEERING, INC.**  
100 WADE AVE., SUITE 104  
RALEIGH, NC 27605  
PHONE: (919) 789-0919  
FAX: (919) 789-9921  
N.C. LICENSE NO. 01133



PRICE: PROMOTIONS, INCENTIVES, FEATURES, OPTIONS, ELEVATIONS, ELEVATIONS, CLOSURES, MATERIALS, FINISHES, AND DIMENSIONS WITHOUT NOTICE. SQUARE FOOTAGE AND DIMENSIONS ARE ESTIMATED AND MAY VARY IN ACTUAL CONSTRUCTION. ACTUAL POSITION OF HOUSE ON LOT IS NOT GUARANTEED. ELEVATIONS ARE FOR INFORMATION ONLY. CONCEPTS OF FLOOR PLANS ARE THE PROPERTY OF RENAISSANCE RESIDENTIAL DESIGN, INC. AND ARE NOT TO BE REPRODUCED, CHANGED, OR COPIED IN ANY FORM OR MANNER WITHOUT FIRST OBTAINING THE EXPRESS WRITTEN CONSENT OF RENAISSANCE RESIDENTIAL DESIGN, INC. NOR ARE THEY TO BE ASSIGNED TO ANY THIRD PARTY WITHOUT FIRST OBTAINING SAID WRITTEN PERMISSION AND CONSENT.

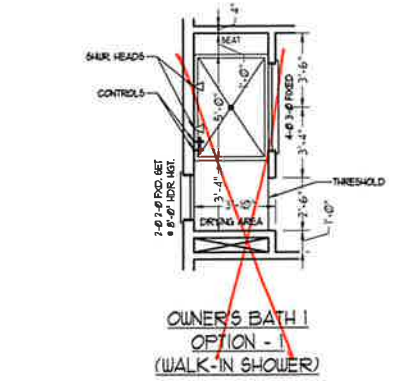
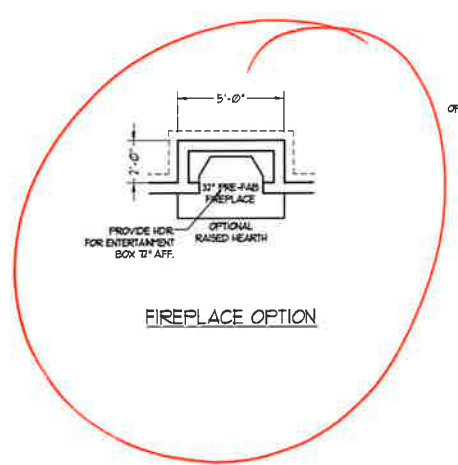
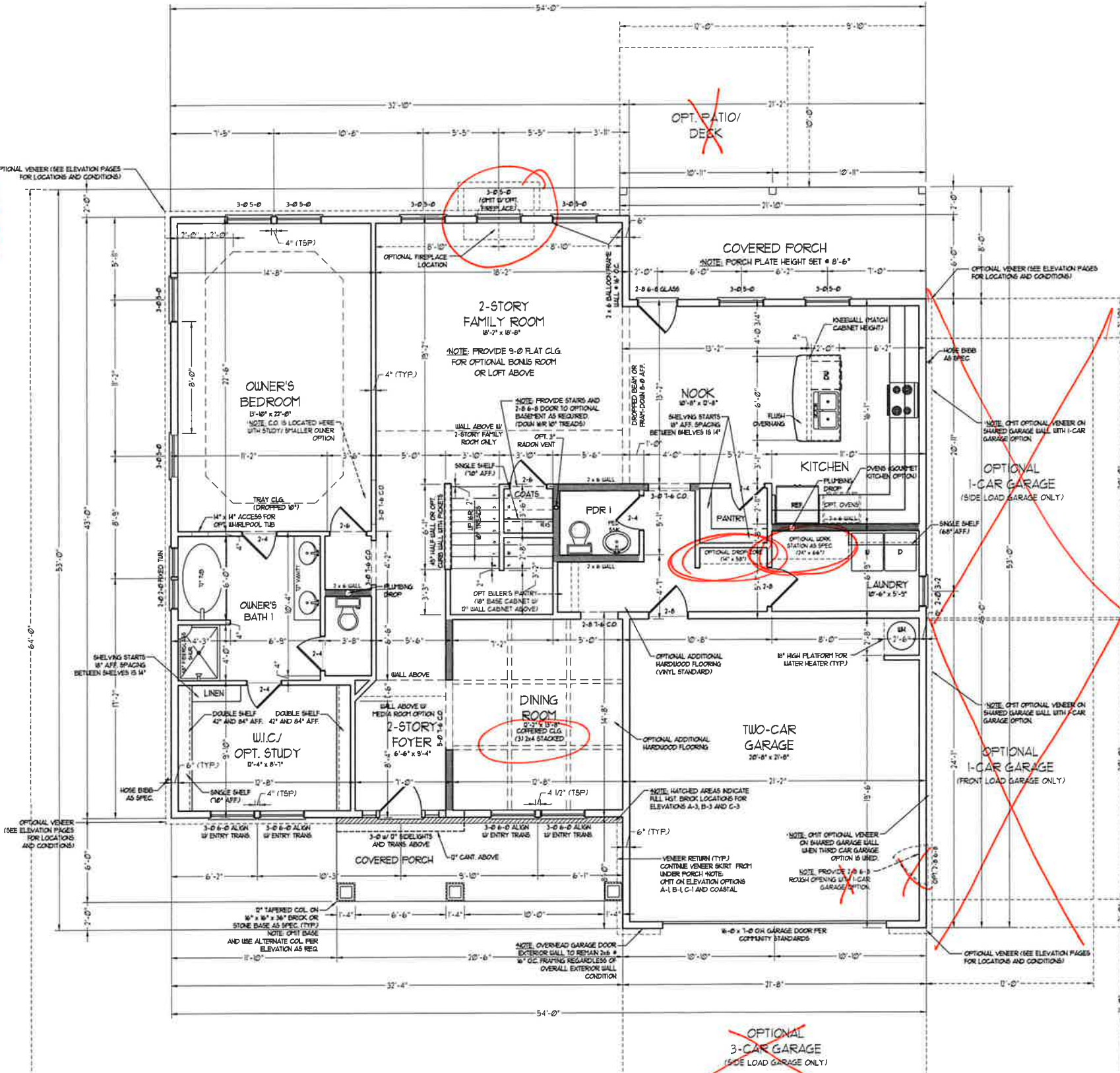
**H&H HOMES, INC.**  
**JACKSON**

DATE: FEBRUARY 27, 2019  
REV: JANUARY 16, 2020  
SCALE: 1/4" = 1'-0"  
DRAWN BY: WG  
ENGINEERED BY: WLF  
REVIEWED BY: JES

FIRST FLOOR PLAN  
**A-5**

SQUARE FOOTAGE (STANDARD)	
1st FLOOR:	1895 SQ. FT.
2nd FLOOR:	1585 SQ. FT.
TOTAL:	3480 SQ. FT.
GARAGE:	473 SQ. FT.
1st FLOOR (ALL BRICK):	1950 SQ. FT.
2nd FLOOR (ALL BRICK):	1645 SQ. FT.
TOTAL (ALL BRICK):	3595 SQ. FT.
GARAGE (ALL BRICK):	495 SQ. FT.
FRONT PORCH:	122 SQ. FT.
STD. REAR PORCH:	170 SQ. FT.

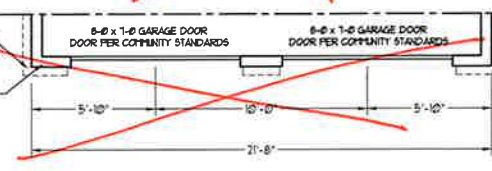
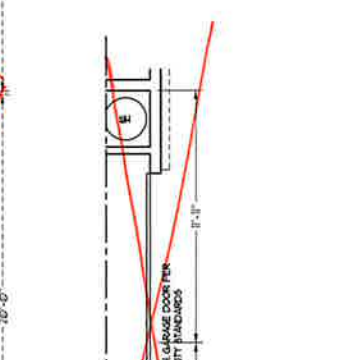
SQUARE FOOTAGE (OPTIONS)	
BASEMENT (UNFINISHED):	1895 SQ. FT.
BASEMENT (ALL BRICK):	1950 SQ. FT.
OPT. BONUS/LOFT:	214 SQ. FT.
OPT. 1-CAR GARAGE:	240 SQ. FT.
OPT. 1-CAR GARAGE (ALL BRICK):	259 SQ. FT.
OPT. 3-CAR GARAGE:	712 SQ. FT.
OPT. 3-CAR GARAGE (ALL BRICK):	142 SQ. FT.
OPT. PATIO/DECK:	120 SQ. FT.



**NOTE: ALL EXTERIOR WALLS AND ATTIC WALLS ARE TO BE 2 x 6 @ 16" O.C. (UNO). 2 x 4 @ 16" O.C. EXTERIOR WALLS MAY BE CONSTRUCTED IN LIEU OF 2 x 6 WALLS (UNO). ALL INTERIOR LOAD BEARING WALLS ARE TO BE 2 x 4 @ 16" O.C. (UNO) AND NON-LOAD BEARING INTERIOR WALLS ARE TO BE 2 x 4 @ 24" O.C. (UNO).**

2x6 WALL

SHADE WALLS ARE TO BE 2 x 6 @ 16" O.C. (LOAD BEARING) OR 2 x 6 @ 24" O.C. (NON-LOAD BEARING) REGARDLESS OF EXTERIOR WALL CONDITION







**RENAISSANCE**

RESIDENTIAL DESIGN, INC.

4810 GLENMIST CT., RALEIGH, NC 27619

(919) 649-4128

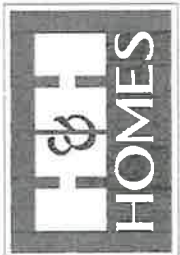
WWW.RIDCAROLINA.COM

"The art of transforming your vision into reality"

RENAISSANCE RESIDENTIAL DESIGN, INC. RESERVES THE RIGHT TO MAKE MODIFICATIONS TO FLOOR PLANS, DIMENSIONS, MATERIALS AND SPECIFICATIONS WITHOUT NOTICE. THESE DRAWINGS ARE FOR THE PURPOSE OF CONVEYING AN ARCHITECTURAL CONCEPT ONLY.

RENAISSANCE RESIDENTIAL DESIGN, INC. HEREBY EXPRESSLY RESERVES ITS COMMON LAW COPYRIGHT AND OTHER PROPERTY RIGHTS IN THESE PLANS. THESE PLANS AND DRAWINGS ARE NOT TO BE REPRODUCED, CHANGED OR COPIED IN ANY FORM OR MANNER WITHOUT FIRST OBTAINING THE EXPRESS WRITTEN CONSENT OF RENAISSANCE RESIDENTIAL DESIGN, INC. NOR ARE THEY TO BE ASSIGNED TO ANY THIRD PARTY WITHOUT FIRST OBTAINING SAID WRITTEN PERMISSION AND CONSENT.

**J.S. THOMPSON**  
ENGINEERING, INC.  
100 W. WADE AVE., SUITE 104  
RALEIGH, NC 27605  
PHONE (919) 789-9919  
FAX (919) 789-9321  
N.C. LICENSE NO. C-1133



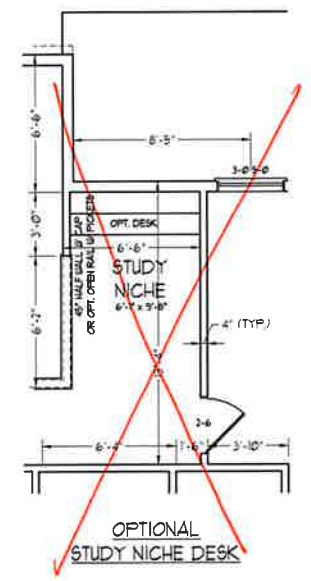
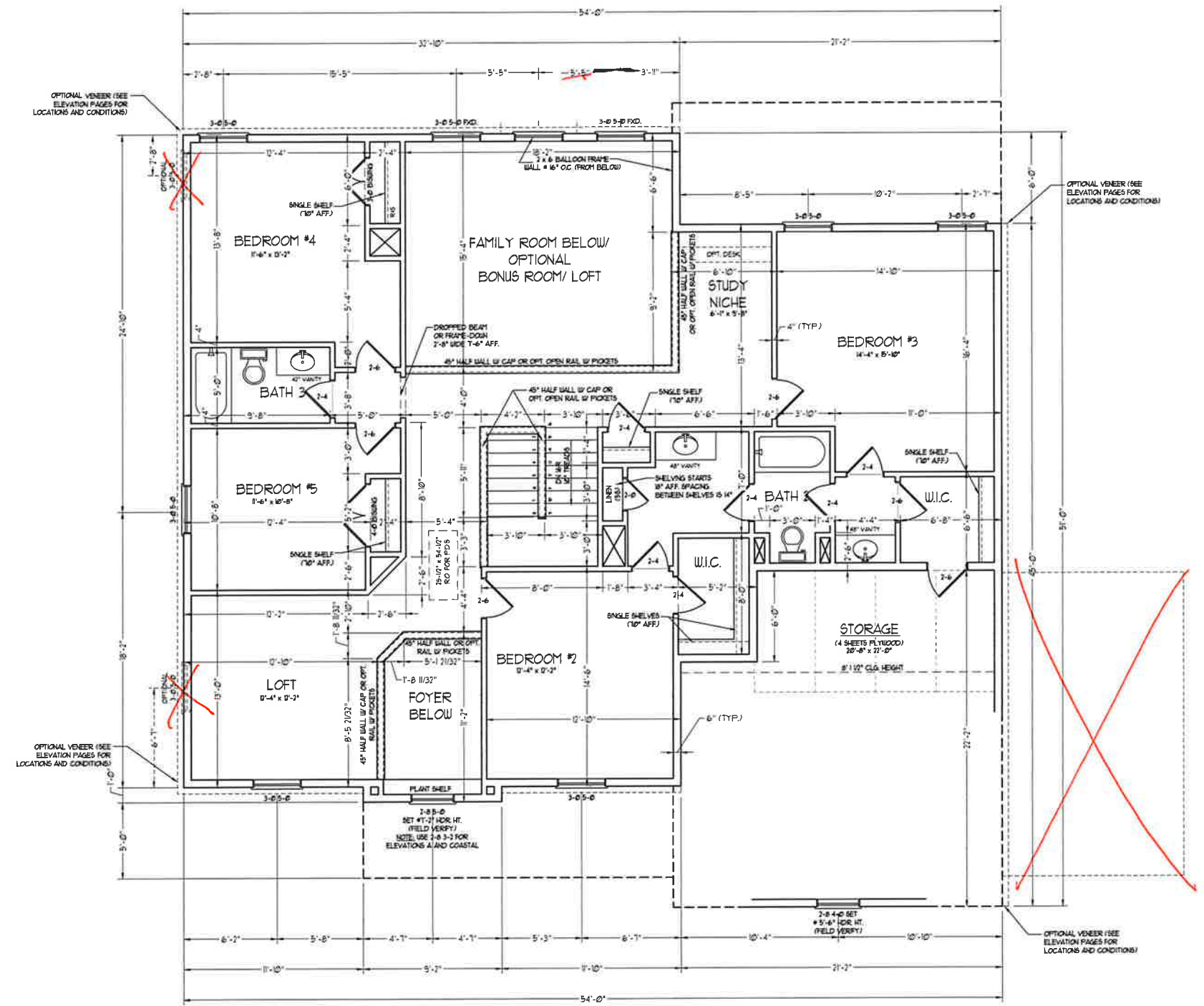
PRICES, PROMOTIONS, INCENTIVES, FEATURES, FINISHES AND DIMENSIONS ARE SUBJECT TO CHANGE WITHOUT NOTICE. SQUARE FOOTAGE AND DIMENSIONS ARE ESTIMATED AND MAY VARY IN ACTUAL CONSTRUCTION. THESE PLANS AND DRAWINGS ARE ARTIST CONCEPTIONS. FLOOR PLANS AND ELEVATION DRAWINGS ARE THE PROPERTY OF H&H HOMES, INC. USE, REPRODUCTION, OR DISTRIBUTION OF THESE PLANS AND DRAWINGS FOR ANY OTHER PROJECT IS PROHIBITED. SEE NEW HOME SALES CONSULTANT FOR CURRENT DETAILS. COPYRIGHT © 2019 H&H HOMES

**H&H HOMES, INC.**  
**JACKSON**

DATE: FEBRUARY 27, 2019  
REV.: JANUARY 16, 2020  
SCALE: 1/4"=1'-0"  
DRAWN BY: WJG  
ENGINEERED BY: WLF  
REVIEWED BY: JES

SECOND FLOOR PLAN

A-6



**NOTE:** ALL EXTERIOR WALLS AND ATTIC WALLS ARE TO BE 2 x 6 @ 16" O.C. (UNO), 2 x 4 @ 16" O.C. EXTERIOR WALLS MAY BE CONSTRUCTED IN LIEU OF 2 x 6 WALLS (UNO). ALL INTERIOR LOAD BEARING WALLS ARE TO BE 2 x 4 @ 16" O.C. (UNO) AND NON-LOAD BEARING INTERIOR WALLS ARE TO BE 2 x 4 @ 24" O.C. (UNO).

2x6 WALL  
\* SHADED WALLS ARE TO BE 2 x 6 @ 16" O.C. (LOAD BEARING) OR 2 x 6 @ 24" O.C. (NON-LOAD BEARING) REGARDLESS OF EXTERIOR WALL CONDITION

OPTIONAL VENEER (SEE ELEVATION PAGES FOR LOCATIONS AND CONDITIONS)

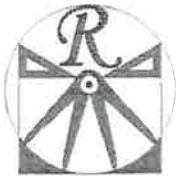
OPTIONAL VENEER (SEE ELEVATION PAGES FOR LOCATIONS AND CONDITIONS)

OPTIONAL VENEER (SEE ELEVATION PAGES FOR LOCATIONS AND CONDITIONS)

OPTIONAL VENEER (SEE ELEVATION PAGES FOR LOCATIONS AND CONDITIONS)

2-8 8-0 SET #17-21 HOR. HT. (FIELD VERRY)  
NOTE: USE 2-8 3-3 FOR ELEVATIONS ALAND COASTAL

2-8 4-0 SET #15-19 HOR. HT. (FIELD VERRY)

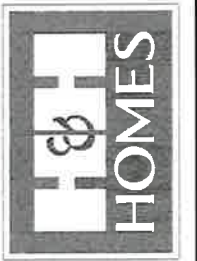


**RENAISSANCE**  
RESIDENTIAL DESIGN, INC.  
4810 GLENHIST CT. | RALEIGH, NC 27612  
(919) 648-4128  
WWW.RROCDARLINA.COM

"The art of transforming your vision into reality."  
RENAISSANCE RESIDENTIAL DESIGN, INC. RESERVES THE RIGHT TO MAKE MODIFICATIONS TO FLOOR PLANS, DIMENSIONS, MATERIALS, AND SPECIFICATIONS WITHOUT NOTICE. THESE DRAWINGS ARE FOR THE PURPOSE OF CONVEYING AN ARCHITECTURAL CONCEPT ONLY.

RENAISSANCE RESIDENTIAL DESIGN, INC. HEREBY EXPRESSLY RESERVES ITS COMMON LAW COPYRIGHT AND OTHER PROPERTY RIGHTS IN THESE PLANS. THESE PLANS AND DRAWINGS ARE NOT TO BE REPRODUCED, CHANGED OR COPIED IN ANY FORM OR MANNER WITHOUT FIRST OBTAINING THE EXPRESS WRITTEN CONSENT OF RENAISSANCE RESIDENTIAL DESIGN, INC. AND ARE TO BE ASKED TO ANY THIRD PARTY WITHOUT FIRST OBTAINING SAID WRITTEN PERMISSION AND CONSENT.

**J.S. THOMPSON**  
**ENGINEERING, INC.**  
600 WADE AVE., SUITE 104  
RALEIGH, NC 27605  
PHONE: 919 789-4478  
FAX: 919 789-4921  
N.C. LICENSE NO. C-11333

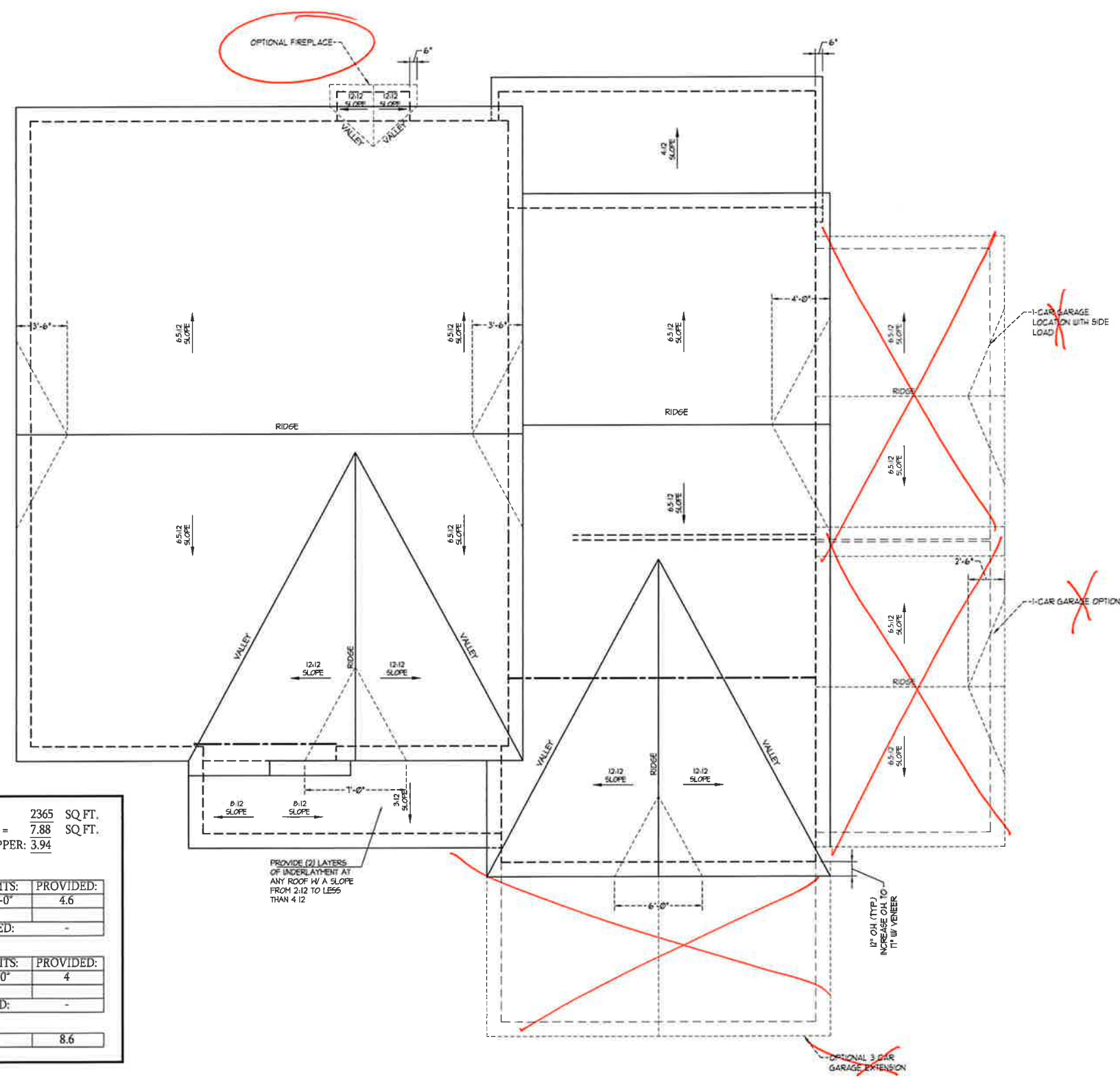


PRICES, PROMOTIONS, INCENTIVES, FEATURES, MATERIALS, FINISHES, ELEVATIONS, DESIGN, AND CONSTRUCTION ARE SUBJECT TO CHANGE WITHOUT NOTICE. SQUARE FOOTAGE AND DIMENSIONS ARE ESTIMATED AND MAY VARY IN ACTUAL CONSTRUCTION. ACTUAL POSITION OF ROOMS ON LOT IS TO BE DETERMINED BY SURVEY. FLOOR PLANS AND ELEVATION DRAWINGS ARE ARTIST CONCEPTIONS. FLOOR PLANS ARE THE COPYRIGHTED PROPERTY OF H&H HOMES. ANY USE, REPRODUCTION, ADAPTATION, OR DISPLAY OF THESE PLANS WITHOUT THE WRITTEN PERMISSION OF H&H HOMES IS STRICTLY PROHIBITED. COPYRIGHT © 2019 H&H HOMES

**H&H HOMES, INC.**  
**JACKSON**

DATE: FEBRUARY 27, 2019  
REV. JANUARY 16, 2020  
SCALE: 1/4" = 1'-0"  
DRAWN BY: W.G.  
ENGINEERED BY: WLF  
REVIEWED BY: JES

ROOF PLAN  
ELEVATIONS -  
B&C  
**S-4**



TOTAL UNDER ROOF AREA:	2365	SQ. FT.
VENTING AREA REQUIRED:	$2365 \text{ SQ. FT.} / 300 = 7.88$	SQ. FT.
TOTAL REQUIREMENTS:	LOWER: 3.94	UPPER: 3.94

LOWER AREA VENTING				
SOFFIT VENT	SIZE:	PER UNIT:	# UNITS:	PROVIDED:
	-	.041 SF/LF	112'-0"	4.6
LOWER AREA VENTING PROVIDED: -				

UPPER AREA VENTING				
RIDGE VENT	SIZE:	PER UNIT:	# UNITS:	PROVIDED:
	-	.125 SF/LF	32'-0"	4
UPPER AREA VENTING PROVIDED: -				

TOTAL AREA PROVIDED	SOFFIT AND RIDGE VENT	8.6
---------------------	-----------------------	-----





**RENAISSANCE**  
RESIDENTIAL DESIGN, INC.  
4810 GLENHIST CT. | RALEIGH, NC 27612  
(919) 648-4128  
WWW.RRDCAROLINA.COM

RENAISSANCE RESIDENTIAL DESIGN, INC. HEREBY EXPRESSLY RESERVES ITS COMMON LAW COPYRIGHT AND OTHER PROPERTY RIGHTS IN THESE PLANS. THESE PLANS AND DRAWINGS ARE NOT TO BE REPRODUCED, CHANGED, OR COPIED IN ANY FORM OR MANNER WITHOUT FIRST OBTAINING THE WRITTEN CONSENT OF RENAISSANCE RESIDENTIAL DESIGN, INC. NOR ARE THEY TO BE ASSIGNED TO ANY THIRD PARTY WITHOUT FIRST OBTAINING SAID WRITTEN PERMISSION AND CONSENT.

**J.S. THOMPSON**  
**ENGINEERING, INC.**  
1004 WADE AVE. SUITE 101  
RALEIGH, NC 27605  
PHONE: (919) 789-9919  
FAX: (919) 782-9923  
NC LICENSE NO. C1733



PRICES, PROMOTIONS, INCENTIVES, FEATURES, MATERIALS, ROOM FINISHES, ELEVATIONS, DIMENSIONS, CONSTRUCTION, ACTUAL POSITION OF HOUSE ON LOT, FLOOR PLANS AND ELEVATION DRAWINGS ARE ARTIST CONCEPTIONS. FLOOR PLANS ARE THE COPYRIGHTED PROPERTY OF H&H HOMES. ANY USE, REPRODUCTION, OR MODIFICATION OF THESE PLANS WITHOUT THE WRITTEN PERMISSION OF H&H HOMES IS PROHIBITED. SEE NEW HOME SALES CONSULTANT FOR CURRENT DETAILS. COPYRIGHT © 2019 H&H HOMES

**H&H HOMES, INC.**  
**JACKSON**

DATE: FEBRUARY 27, 2019  
REV: JANUARY 16, 2020  
SCALE: 1/4" = 1'-0"  
DRAWN BY: WG  
ENGINEERED BY: WLF  
REVIEWED BY: JES

FIRST FLOOR  
ELECTRICAL  
PLAN  
**E-1**

**HVAC LEGEND**

- RETURN AIR
- SUPPLY GRILLE
- AIR HANDLING UNIT
- HEAT PUMP
- THERMOSTAT

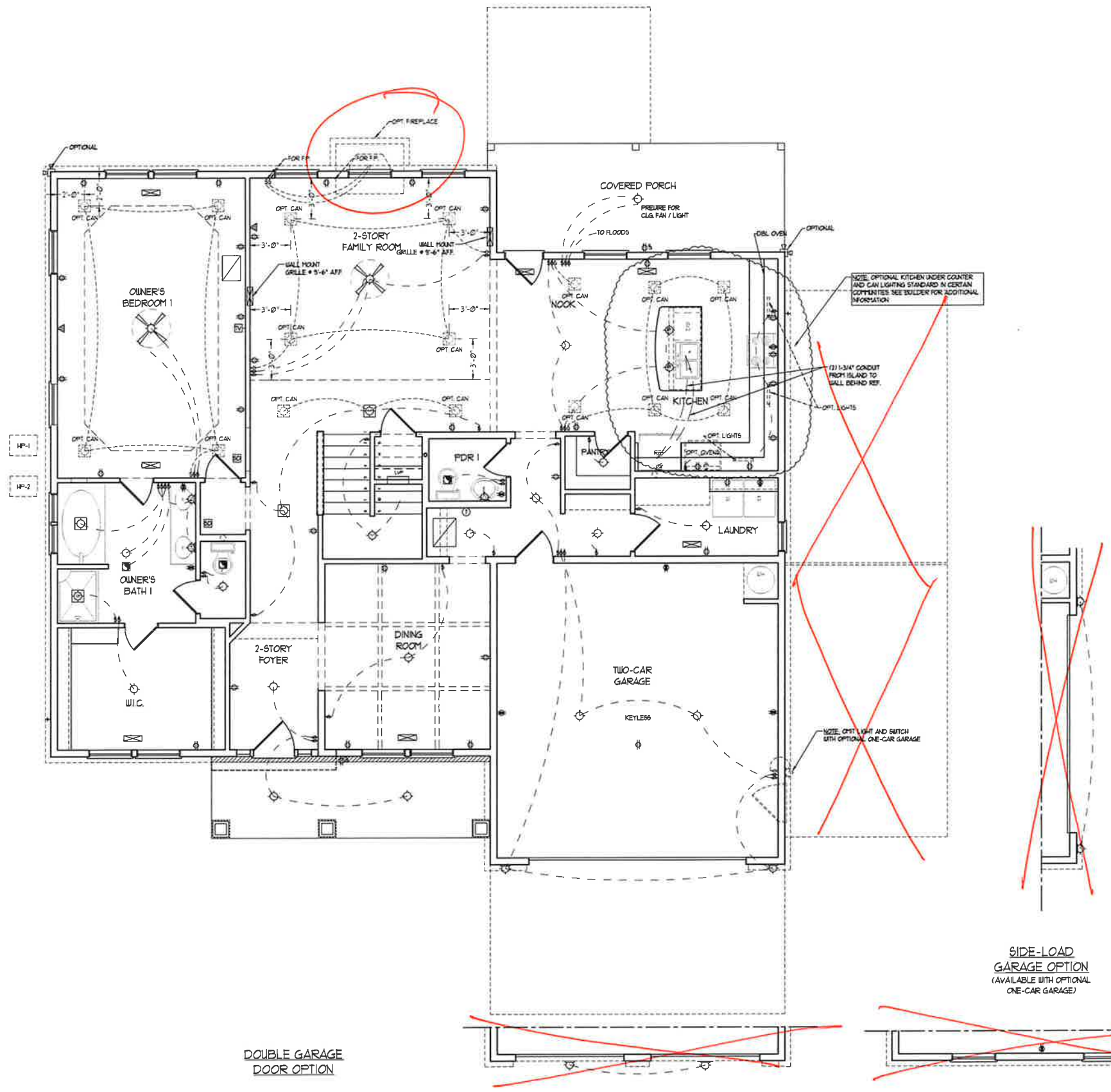
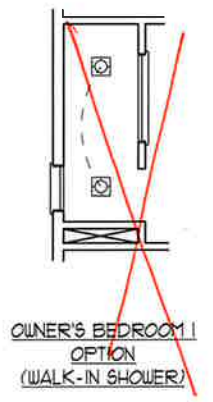
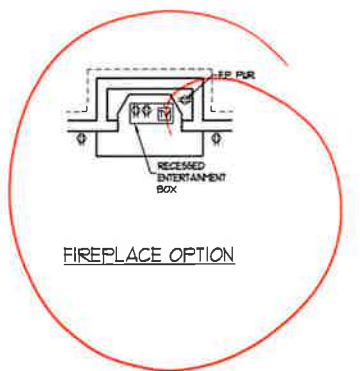
**ELECTRICAL LAYOUT NOTES:**

- 1) BLOCK AND WIRE FOR ALL CEILING FANS PER PLAN.
- 2) VANITY LIGHTS TO BE SET @ 30" AFF. (TYP.)
- 3) ADDITIONAL EXTERIOR OUTLETS REQUIRED BY CODE TO BE LOCATED BY ELECTRICIAN.
- 4) PLACE SWITCHES 8" MIN FROM ROUGH OPENINGS.

**ELECTRICAL LEGEND**

- 120 V OUTLET
- 120 V GFI OUTLET
- 120 V SWITCHED OUTLET
- 120 V BASEBOARD OUTLET
- 4-PLEX
- COUNTER OR FLOOR MOUNTED
- COUNTER OR FLOOR MOUNTED 120V GFI
- LEATHERPROOF
- 220 V OUTLET
- 120 V DEDICATED CIRCUIT
- 220 V DEDICATED CIRCUIT
- SPECIAL PURPOSE (400 V, ETC.)
- WALL MOUNT LIGHT
- CEILING MOUNT LIGHT
- PENDANT LIGHT
- RECESSED CAN LIGHT
- MINI CAN LIGHT
- EYEBALL LIGHT
- FLUORESCENT LIGHT
- UNDERCABINET LIGHT
- FLOOD LIGHT
- SWITCH
- 3-WAY SWITCH
- 4-WAY SWITCH
- DIMMER SWITCH
- TELEPHONE
- TV CONNECTION
- CONDUIT FOR COMPONENT WIRING
- SPEAKER
- DOORBELL CHIME
- 120 V SMOKE DETECTOR
- EXHAUST FAN
- LOW VOLTAGE PANEL

- CEILING FAN
- CEILING FAN W/ LIGHT



SIDE-LOAD  
GARAGE OPTION  
(AVAILABLE WITH OPTIONAL  
ONE-CAR GARAGE)
















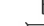





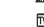













**HVAC LEGEND**



-  RETURN AIR
-  SUPPLY GRILLE
-  AHU AIR HANDLING UNIT
-  HP HEAT PUMP
-  THERMOSTAT

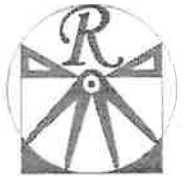
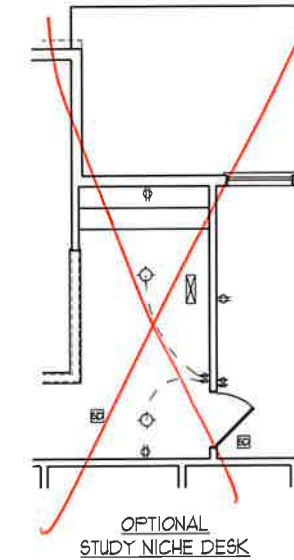
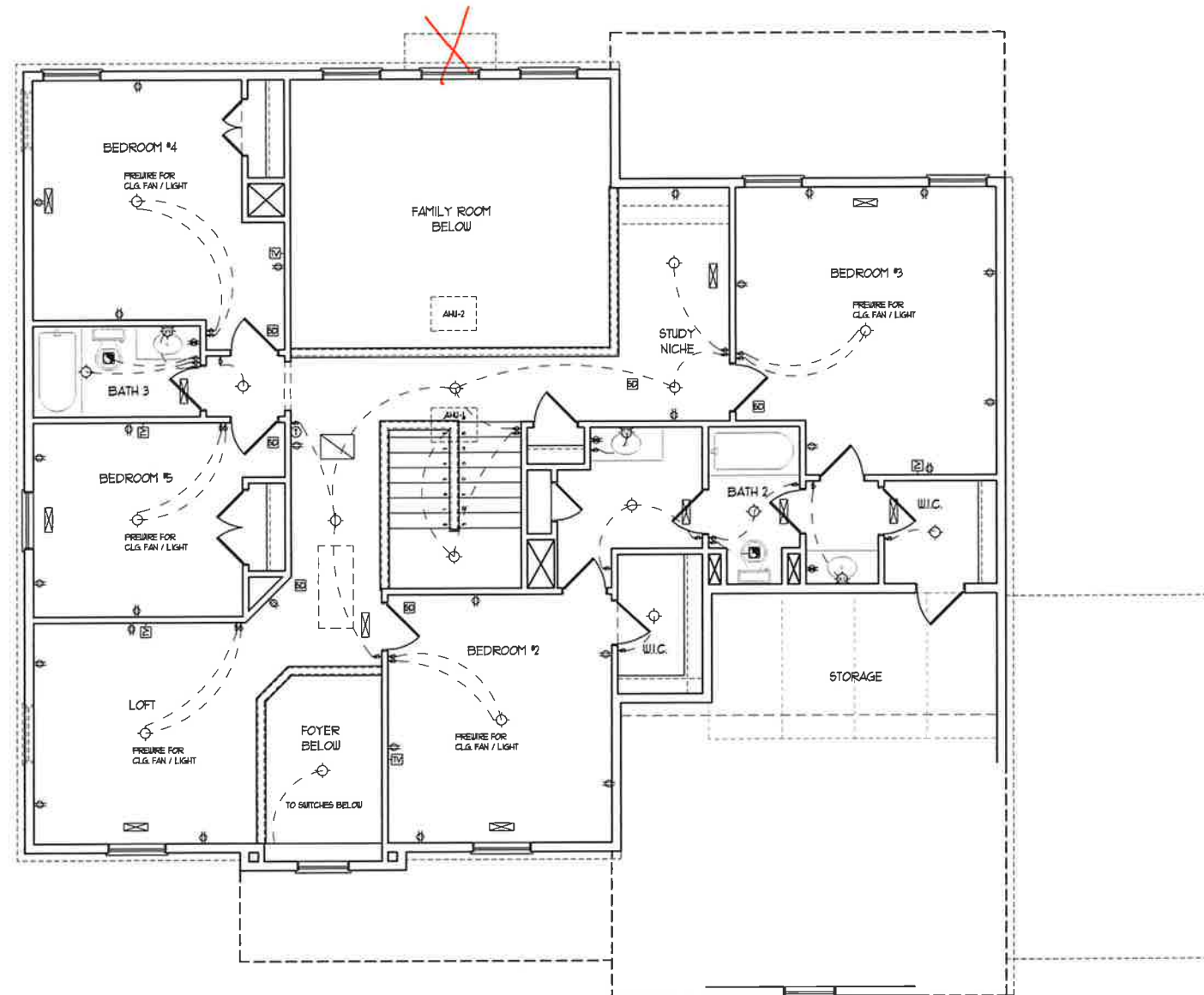
**ELECTRICAL LAYOUT NOTES:**

- 1) BLOCK AND WIRE FOR ALL CEILING FANS PER PLAN
- 2) VANTY LIGHTS TO BE SET # 90" AFF. (TYP.)
- 3) ADDITIONAL EXTERIOR OUTLETS REQUIRED BY CODE TO BE LOCATED BY ELECTRICIAN.
- 4) PLACE SWITCHES 6" FROM ROUGH OPENINGS.

**ELECTRICAL LEGEND**

-  120 V OUTLET
-  120 V GFI OUTLET
-  120 V SWITCHED OUTLET
-  120 V BASEBOARD OUTLET
-  4-PLEX
-  COUNTER OR FLOOR MOUNTED
-  COUNTER OR FLOOR MOUNTED 100V GFI
-  WEATHERPROOF
-  120 V OUTLET
-  120 V DEDICATED CIRCUIT
-  120 V DEDICATED CIRCUIT
-  SPECIAL PURPOSE (240 V, ETC.)
-  WALL MOUNT LIGHT 1P
-  CEILING MOUNT LIGHT
-  PENDANT LIGHT
-  RECESSED CAN LIGHT
-  MINI CAN LIGHT
-  EYEBALL LIGHT
-  FLUORESCENT LIGHT
-  UNDERCABINET LIGHT
-  FLOOD LIGHT
-  SWITCH
-  3-WAY SWITCH
-  4-WAY SWITCH
-  DIMMER SWITCH
-  TELEPHONE
-  TV CONNECTION
-  CONDUIT FOR COMPONENT WIRING
-  SPEAKER
-  DOORBELL CHIME
-  100 V SMOKE DETECTOR
-  EXHAUST FAN
-  LOW VOLTAGE PANEL

-  CEILING FAN
-  CEILING FAN w/ LIGHT



**RENAISSANCE**  
RESIDENTIAL DESIGN, INC.  
4810 GLENHIST CT. | RALEIGH, NC 27612  
(919) 649-4128  
WWW.RHOCARDLINA.COM

"The art of transforming your vision into reality."

RENAISSANCE RESIDENTIAL DESIGN, INC. RESERVES THE RIGHT TO MAKE MODIFICATIONS TO FLOOR PLANS DIMENSIONS, MATERIALS AND SPECIFICATIONS WITHOUT NOTICE. THESE DRAWINGS ARE FOR THE PURPOSE OF CONVEYING AN ARCHITECTURAL CONCEPT ONLY.

RENAISSANCE RESIDENTIAL DESIGN, INC. HEREBY EXPRESSLY RESERVES ITS COMMON LAW COPYRIGHT AND OTHER PROPERTY RIGHTS IN THESE PLANS. THESE PLANS AND DRAWINGS ARE NOT TO BE REPRODUCED, CHANGED, OR COPIED IN ANY FORM OR MANNER WITHOUT FIRST OBTAINING THE EXPRESS WRITTEN CONSENT OF RENAISSANCE RESIDENTIAL DESIGN, INC. AND ARE TO BE ASSIGNED TO ANY THIRD PARTY WITHOUT FIRST OBTAINING SAID WRITTEN PERMISSION AND COMMENT.

**J.S. THOMPSON**  
ENGINEERING, INC.  
600 WAZLE AVENUE, SUITE 104  
RALEIGH, N.C. 27605  
PHONE: (919) 789-9919  
FAX: (919) 789-9921  
N.C. LICENSE NO. C-11733



PRICES, PROMOTIONS, INCENTIVES, FEATURES, OPTIONS, FLOOR PLANS, ELEVATIONS, DESIGN, MATERIALS, FINISHES, COORDINATION, AND DIMENSIONS WITHOUT NOTICE. SOURCE, FOOTAGE AND DIMENSIONS ARE ESTIMATED AND MAY VARY IN ACTUAL CONSTRUCTION. ACTUAL POSITION OF ROOFLINE ON LOT IS NOT SHOWN. FLOOR PLANS AND ELEVATIONS PREPARED BY ARTIST CONCEPTS. FLOOR PLANS ARE THE COPYRIGHTED PROPERTY OF H&H HOMES. ANY USE, REPRODUCTION, PROMOTION, OR SALE OF THESE PLANS WITHOUT THE WRITTEN PERMISSION OF H&H HOMES IS PROHIBITED. SEE H&H HOMES SALES CONSULTANT FOR CURRENT DETAILS. COPYRIGHT © 2019 H&H HOMES

**H&H HOMES, INC.**  
**JACKSON**

DATE: FEBRUARY 27, 2019  
REV.: JANUARY 16, 2020  
SCALE: 1/4" = 1'-0"  
DRAWN BY: W/G  
ENGINEERED BY: W/LF  
REVIEWED BY: JES

SECOND FLOOR  
ELECTRICAL  
PLAN

E-2

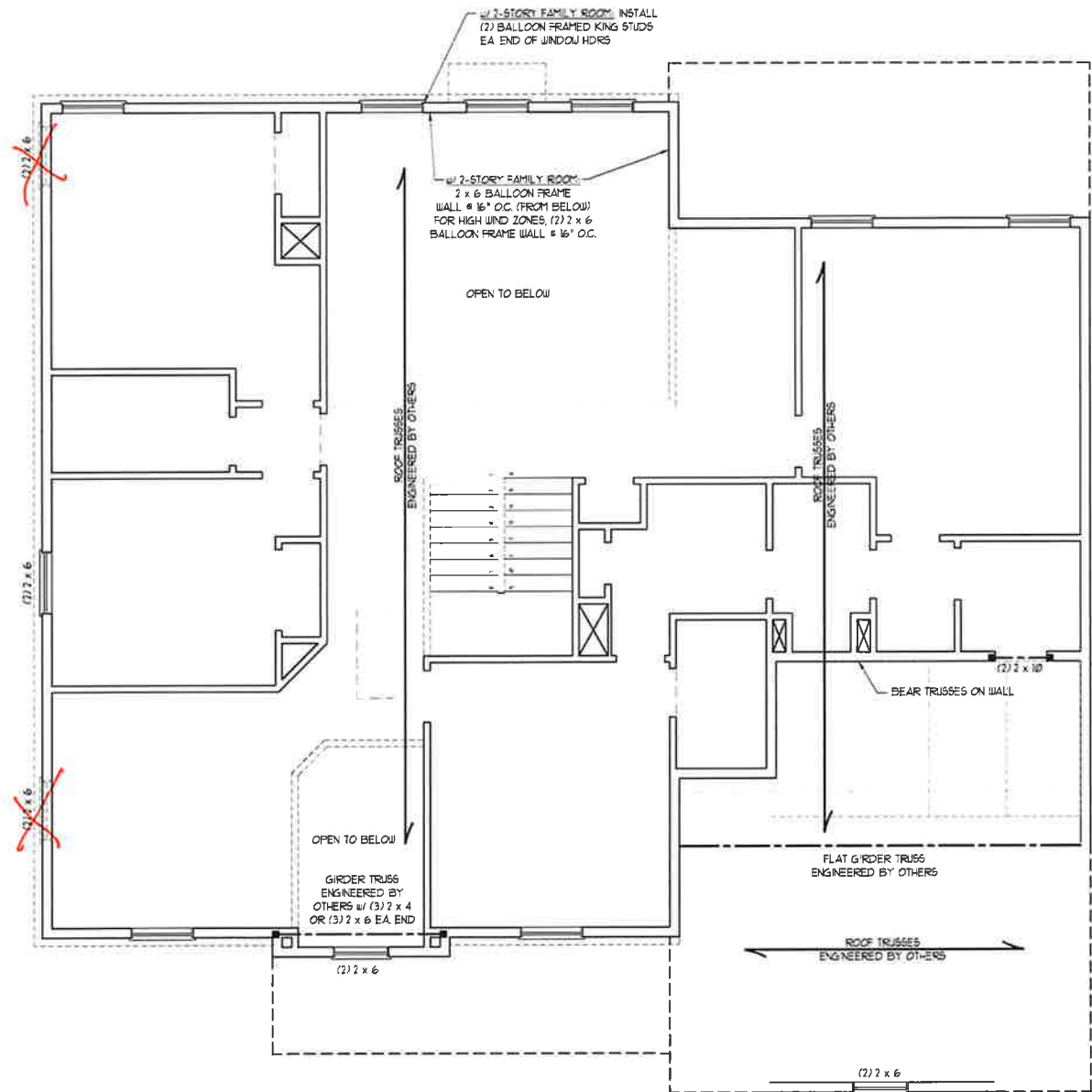
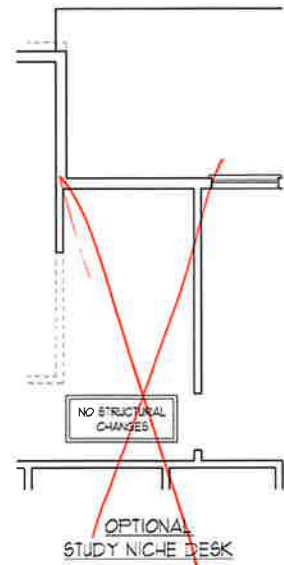












**BRACED WALL DESIGN NOTES:**

1. BRACED WALL DESIGN PER SECTION R602.10 OF THE NRC 2018 EDITION
2. OSB REFERS TO CONTINUOUS SHEATHING - WOOD STRUCTURAL PANELS. CONTRACTOR IS TO INSTALL 1/8" OSB ON ALL EXTERIOR WALLS ATTACHED W/ 8d NAILS SPACED 6" O.C. ALONG PANEL EDGES AND 7" O.C. IN THE FIELD.
3. GB REFERS TO GYPSUM BOARD. CONTRACTOR IS TO INSTALL 1/2" (M.V.) GYPSUM WALL BOARD WHERE NOTED ON THE PLANS FASTENED WITH 1 1/4" SCREWS OR 1 5/8" NAILS SPACED 7" O.C. ALONG PANEL EDGES AND IN THE FIELD INCLUDING TOP AND BOTTOM PLATES.
4. BRACED WALL DESIGN APPLIED IN WIND ZONES UP TO 130 MPH. FOR HIGH WIND ZONES BRACE WALLS ARE TO BE CONSTRUCTED IN ACCORDANCE WITH CHAPTER 45 OF THE NRC 2018 EDITION. SEE NOTES AND DETAIL 5-S-215 FOR ADDITIONAL BRACED WALL INFORMATION.

**NOTE:**

1. PER SECTION R602.10.3.2 OF THE 2018 NRC THE AMOUNT OF BRACING ON THE SECOND FLOOR EXCEEDS THE AMOUNT REQUIRED FOR THE FIRST FLOOR AND NO BRACED WALL ANALYSIS IS REQUIRED.
2. SHEATH ALL EXTERIOR WALLS WITH 1/8" OSB SHEATHING ATTACHED WITH 8d NAILS AT 6" O.C. ALONG PANEL EDGES AND 7" O.C. IN THE FIELD.

**NOTE: ALL EXTERIOR WALLS AND ATTIC WALLS ARE TO BE 2 x 6 @ 16" O.C. (UNO). 2 x 4 @ 16" O.C. EXTERIOR WALLS MAY BE CONSTRUCTED IN LIEU OF 2 x 6 WALLS (UNO). ALL INTERIOR LOAD BEARING WALLS ARE TO BE 2 x 4 @ 16" O.C. (UNO) AND NON-LOAD BEARING INTERIOR WALLS ARE TO BE 2 x 4 @ 24" O.C. (UNO).**

**LINTEL SCHEDULE FOR BRICK/NATURAL STONE SUPPORT**

LENGTH (FT.)	SIZE OF LINTEL
UP TO 4 FT.	L 3 1/2 x 3 1/2 x 1/4
4-8	L 5 x 3 1/2 x 5/16 LLV
8 AND GREATER	L 6 x 4 x 5/16 LLV

- BRICK SUPPORT NOTES:**
1. LINTEL SCHEDULE APPLIES TO ALL OPENINGS IN BRICK VENEER (UNO). SEE ARCH DWGS FOR SIZE AND LOCATION OF OPENINGS.
  2. LLV = LONG LEG VERTICAL
  3. LENGTH = CLEAR OPENING
  4. EMBED ALL ANGLE IRONS MIN. 4" EACH SIDE INTO VENEER TO PROVIDE BEARING
  5. FOR ALL HEADERS 8'-0" AND GREATER IN LENGTH, ATTACH STEEL ANGLE TO HEADER W/ 1/2" LAG SCREWS @ 12" O.C. STAGGERED
  6. FOR ALL BRICK SUPPORT @ ROOF LINES, FASTEN (2) 2 x 10 BLOCKING BETWEEN STUDS W/ (4) 8d NAILS PER PLY. FASTEN A 6" x 4" x 5/16" STEEL ANGLE TO (2) 2 x 10 BLOCKING W/ (2) 1/2" LAG SCREWS @ 12" O.C. STAGGERED. SEE SECTION R103.2.1 OF THE 2018 NRC FOR ADDITIONAL BRICK SUPPORT INFORMATION.
  7. PRECAST REINFORCED CONCRETE LINTELS ENGINEERED BY OTHERS MAY BE USED IN LIEU OF STEEL LINTELS.

- STRUCTURAL NOTES:**
1. ALL FRAMING LUMBER TO BE #2 SFF (UNO)
  2. ALL LOAD BEARING HEADERS TO BE (2) 2 x 10 (UNO)
  3. WINDOW AND DOOR HEADERS TO BE SUPPORTED W/ (1) JACK STUD AND (1) KING STUD EA END (UNO). SEE TABLE R602.15 FOR ADDITIONAL KING STUD REQUIREMENTS.
  4. FOR HIGH WIND ZONES, ALL EXTERIOR WALLS TO BE SHEATHED WITH 1/8" OSB SHEATHING WITH JOINTS BLOCKED AND SECURED WITH 8d NAILS AT 3" O.C. ALONG EDGES AND 6" O.C. IN THE FIELD.
  5. FOR HIGH WIND ZONES, SECURE ALL EXTERIOR WALL SHEATHING PANELS TO DOUBLE TOP PLATES, BANDS, JOISTS, AND GIRDERS WITH (2) ROWS OF 8d NAILS STAGGERED AT 3" O.C. PANELS SHALL EXTEND 12" BEYOND CONSTRUCTION JOINTS AND SHALL OVERLAP GIRDERS AND DOUBLE SILL PLATES THEIR FULL DEPTH.
  6. SQUARES DENOTE POINT LOADS WHICH REQUIRE SOLID BLOCKING TO GIRDER OR FOUNDATION. ALL SQUARES TO BE (2) STUDS (UNO)
  7. REFER TO NOTES AND DETAIL SHEETS FOR ADDITIONAL STRUCTURAL INFORMATION.

**TABLE R602.15  
MINIMUM NUMBER OF FULL HEIGHT STUDS AT EACH END OF HEADERS IN EXTERIOR WALLS**

HEADER SPAN (FEET)	MAXIMUM STUD SPACING (INCHES) (PER TABLE R602.3/5)	
	16	24
UP TO 3'	1	1
4'	2	1
6'	3	2
12'	5	3
16'	6	4



1/29/2020

**J.S. THOMPSON ENGINEERING, INC.**  
606 WADE AVE., SUITE 104 RALEIGH, NC 27605  
PHONE: (919) 789-9919 FAX: (919) 789-9911  
NC LICENSE NO.: C-1713

**JACKSON H&H HOMES, INC.**

DATE: JANUARY 27, 2020  
SCALE: 1/4" = 1'-0"  
DRAWN BY: H&H  
ENGINEERED BY: WFB

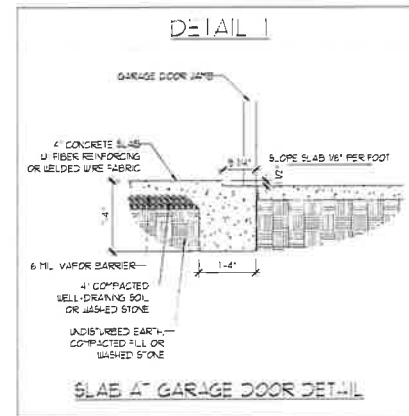
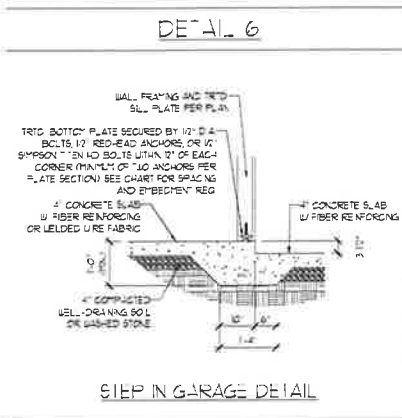
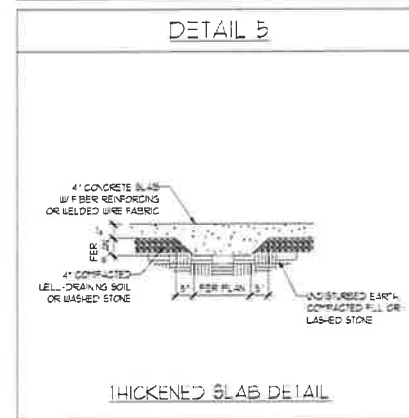
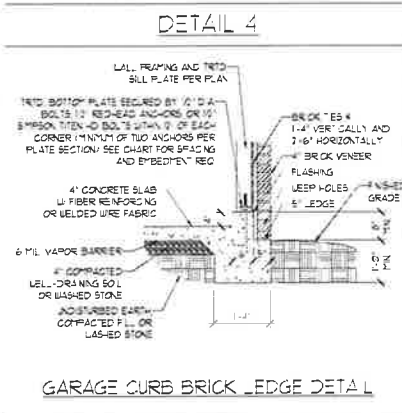
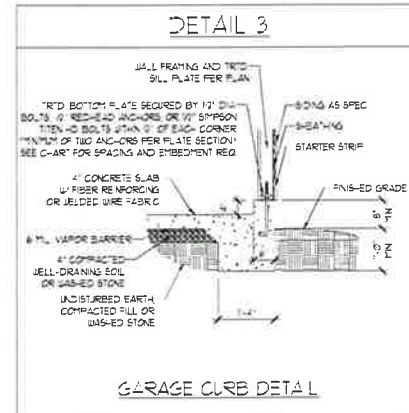
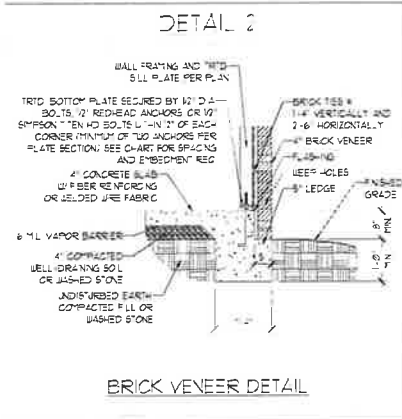
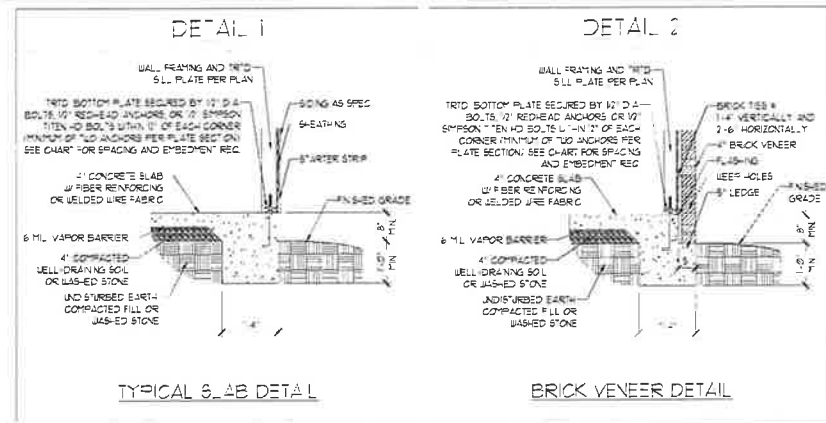
SHEET 9 OF 12  
**S-3a**  
CEILING FRAMING PLAN



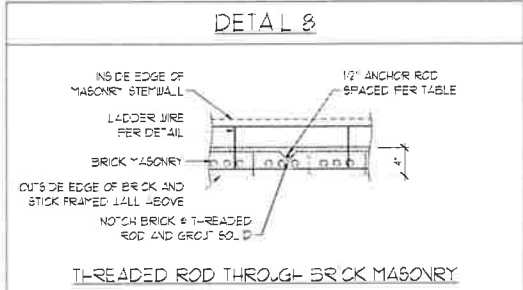
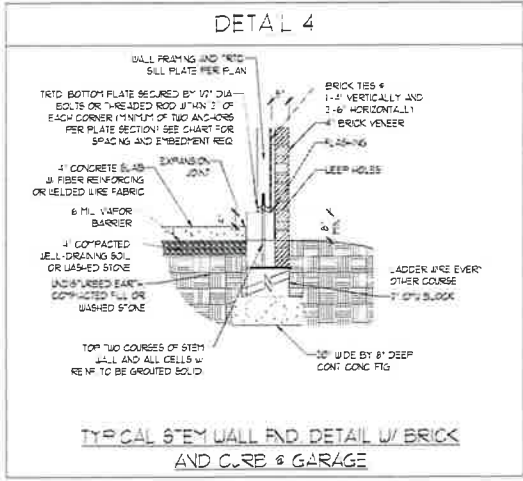
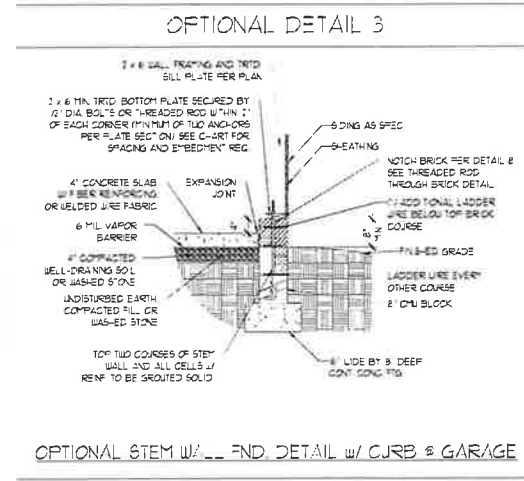
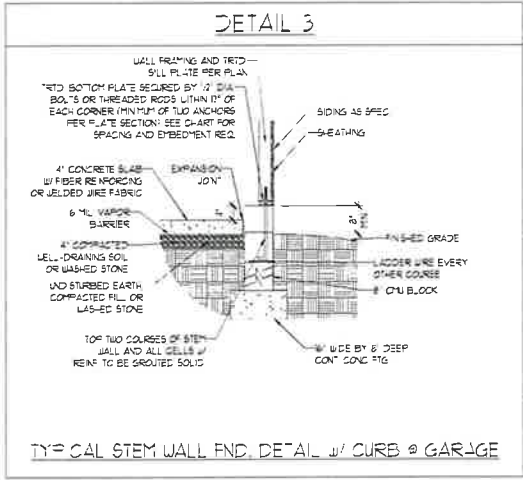
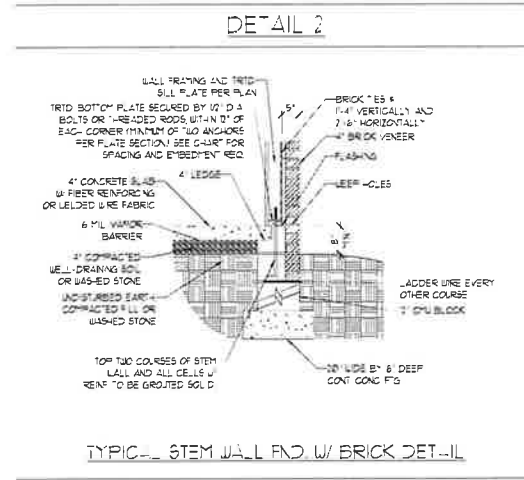
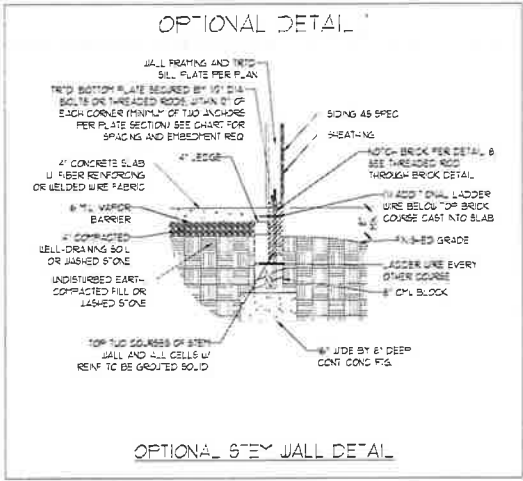
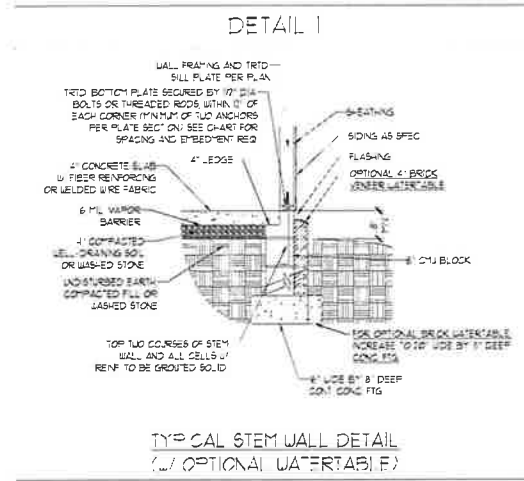




MONOTHIC SLAB DETAILS



STEM WALL DETAILS



MASONRY STEM WALL SPECIFICATIONS

WALL HEIGHT (FEET)	MASONRY WALL TYPE			
	6" CMU	4" BRICK AND 4" CMU	4" BRICK AND 6" CMU	3" CMU
2 AND BELOW	UNGRADED	GROUT SOLID	UNGRADED	UNGRADED
3	UNGRADED	GROUT SOLID	UNGRADED	UNGRADED
4	GROUT SOLID	GROUT SOLID w/ #4 REBAR @ 48" OC	GROUT SOLID	GROUT SOLID w/ #4 REBAR @ 64" OC
5	GROUT SOLID w/ #4 REBAR @ 36" OC	NOT APPLICABLE	GROUT SOLID w/ #4 REBAR @ 36" OC	GROUT SOLID w/ #4 REBAR @ 64" OC
6	GROUT SOLID w/ #4 REBAR @ 36" OC	NOT APPLICABLE	GROUT SOLID w/ #4 REBAR @ 36" OC	GROUT SOLID w/ #4 REBAR @ 64" OC

1 AND GREATER ENGINEERED DESIGN BASED ON SITE CONDITIONS

STRUCTURAL NOTES

1. WALL HEIGHT MEASURED FROM TOP OF FOOTING TO TOP OF THE WALL.
2. TIE MULTIPLE JUNCTIONS TOGETHER WITH LADDER WIRE AT 6" OC VERTICALLY.
3. CHART APPLICABLE FOR HOUSE FOUNDATION ONLY. CONSULT ENGINEER FOR DESIGN OF GARAGE FOUNDATION NOT COMMON TO HOUSE.
4. BACKFILL OF CLEAN #1 #8 WASHED STONE IS ALLOWABLE.
5. BACKFILL OF WELL DRAINED OR SAND - GRAVEL MIXTURE SOILS (AS PER FT BELOW GRADE) CLASSIFIED AS GROUP 1 ACCORDING TO UNIFIED SOILS CLASSIFICATION SYSTEM IN ACCORDANCE WITH TABLE 201.1 OF THE 2016 INTERNATIONAL RESIDENTIAL CODE ARE ALLOWABLE.
6. PREP SLAB PER RESECTION AND RESECTION BASE OF THE 2018 INTERNATIONAL RESIDENTIAL CODE MINIMUM 2" LAP SPlice LENGTH.
7. LOCATE REBAR IN CENTER OF FOUNDATION WALL.
8. WHERE REQUIRED, FILL BLOCK SOLID WITH TYPE 'S' MORTAR OR 3000 PS GROUT. USE OF 'LOW LIFT GROUTING' METHOD REQUIRED WHEN FILLING WALLS WITH GROUT AT HEIGHTS OF 5' AND GREATER.

ANCHOR SPACING AND EMBEDMENT

WIND ZONE	20 MPH		30 MPH	
	SPACING	EMBEDMENT	SPACING	EMBEDMENT
20 MPH	6'-0" OC	1"	4'-0" OC	1" INTO MASONRY 1" INTO CONCRETE
30 MPH	6'-0" OC	1"	4'-0" OC	1" INTO MASONRY 1" INTO CONCRETE

**J.S. THOMPSON ENGINEERING, INC.**  
606 WADE AVE., SUITE 104 RALPH, NC 27605  
PHONE: (919) 789-9919 FAX: (919) 789-9921  
N.C. LICENSE NO.: C-1773

120 MPH - 130 MPH ULTIMATE DESIGN WIND SPEED FOUNDATION DETAILS

DATE: NOVEMBER 14, 2018  
SCALE: NTS  
DRAWN BY: JST  
ENGINEERED BY: JES



D-1 FOUNDATION DETAILS





