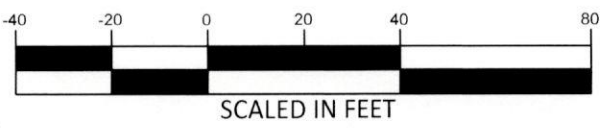
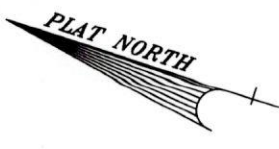


Notes:
 - This plat is for location purposes only. Builder should verify foundation information with plans before construction begins.
 - There is no USCE or NCGS monument within 2000' of this site.
 - The subject property is not within a special flood hazard area as determined by the Department of Housing and Urban Development.
 - The easement information shown hereon was obtained from the recorded plat. No updated title search was performed by the surveyor.
 - All distances are measured in feet.
 - This map reflects the information contained on the Record Plat and does not represent compliance with the Restrictive Covenants.

- LEGEND**
- - EXISTING IRON PIPE
 - - CURVE PT / PC
 - - SURVEYED LINE
 - - - - EASEMENT LINE
 - - ADJOINER
 - - SURVEYED BY OTHERS



****PRELIMINARY PLAT- NOT FOR CONVEYANCES OR SALES****

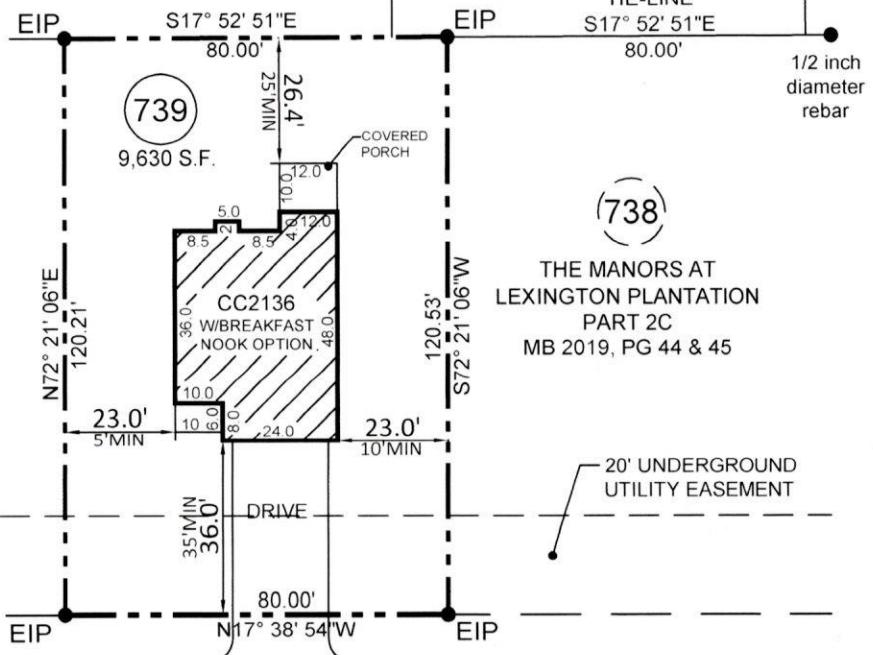


(747)
 THE MANORS AT
 LEXINGTON PLANTATION
 PART 2C
 MB 2019, PG 44 & 45

(748)
 THE MANORS AT
 LEXINGTON PLANTATION
 PART 2C
 MB 2019, PG 44 & 45

(749)
 THE MANORS AT
 LEXINGTON PLANTATION
 PART 2C
 MB 2019, PG 44 & 45

(740)
 THE MANORS AT
 LEXINGTON PLANTATION
 PART 2C
 MB 2019, PG 44 & 45



LEXINGTON PLANTATION
 LOT SETBACKS PER PLAT:

FRONT R/W 60' OR MORE	30' MIN
FRONT R/W UNDER 60'	35' MIN
SIDE	10'/5' MIN
SIDE STREET CORNER	20' MIN
REAR	25' MIN

OLD MONTAGUE WAY
 50' PUBLIC/UTILITY R/W

- PLOT PLAN FOR -
CATES BUILDING, INC.
 - SUBDIVISION -
THE MANORS AT LEXINGTON PLANTATION - PART 2C

ANDERSON CREEK TWP.
 HARNETT COUNTY
 NORTH CAROLINA

REFERENCE MAP # 2019, PG. 44 & 45
 HARNETT COUNTY NORTH CAROLINA REGISTRY

APRIL 4, 2022
 SCALE 1" = 40'
 FIELD BOOK

ENGINEERS
 PLANNERS
 SURVEYORS
MOORMAN, KIZER & REITZEL, INC.

115 broadfoot ave.
 p.o. box 53774
 fayetteville, n.c., 28305
 phone 910-484-5191
 fax 910-484-0388
 LICENSE #: F-0106

Thomas J. Golden
 PROF. SURVEYOR NO. 2-3196

