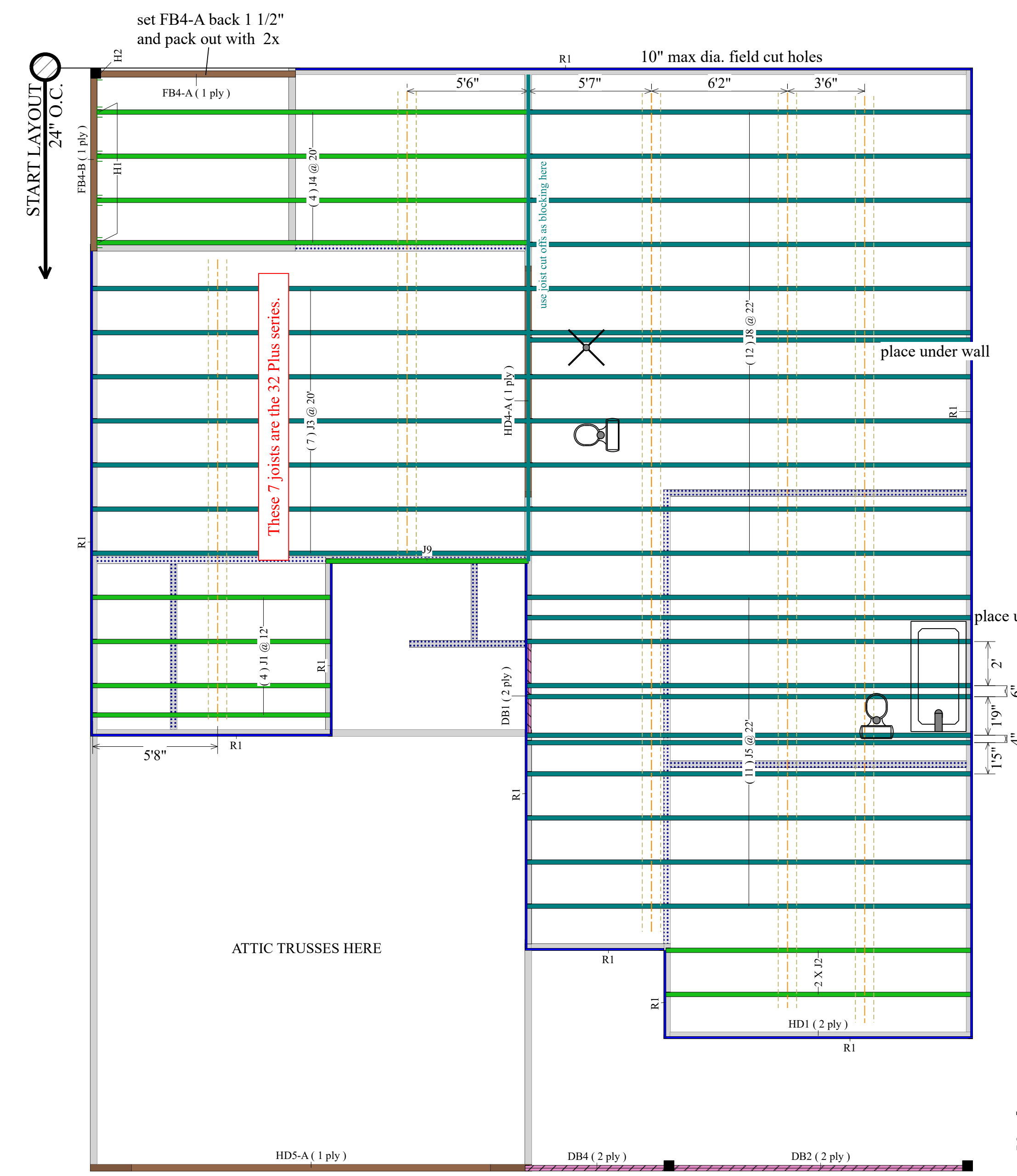
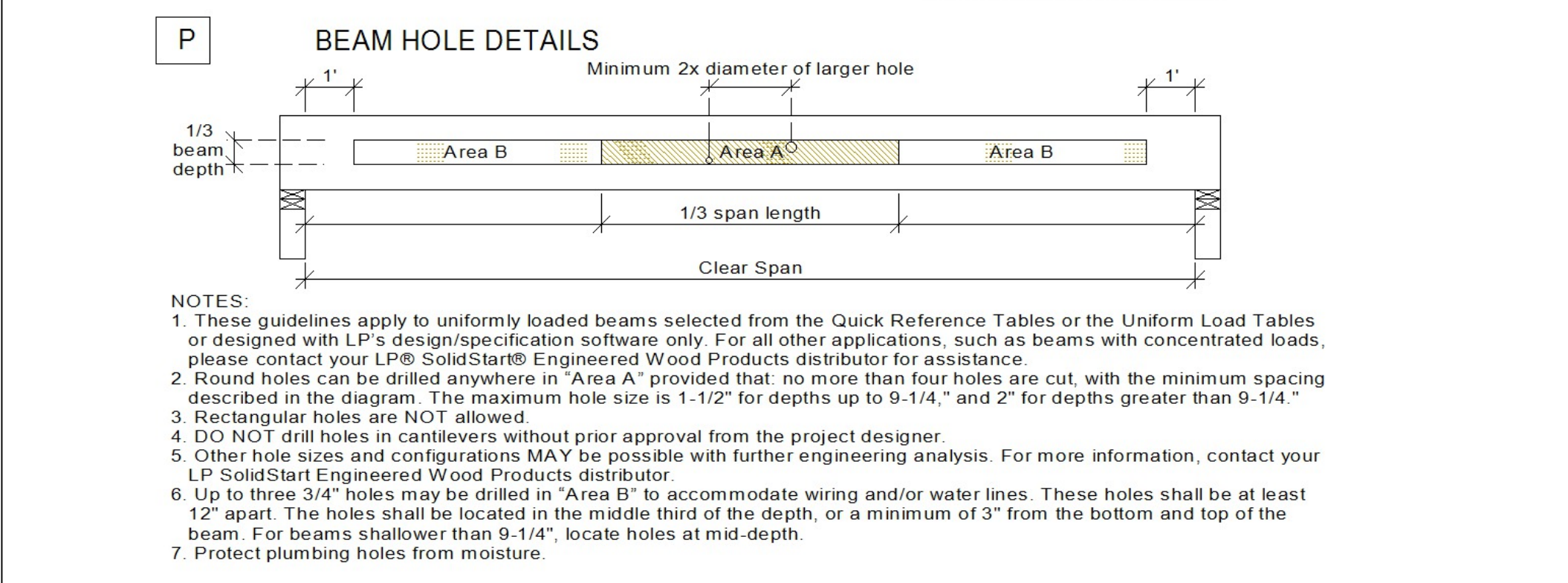


- TO USE:**
- Select the required series and depth.
  - Determine the support condition for the nearest bearing: end support or interior support (including cantilever-end supports).
  - Select the row corresponding to the required Clear Span. For spans between those listed, use the next largest value.
  - Select the column corresponding to the required hole diameter. For diameters between those listed, use the next largest value.
  - The intersection of the Clear Span row and Hole Diameter column gives the minimum distance from the inside face of bearing to the center of a circular hole.
  - Double check the distance to the other support, using the appropriate support condition.

Depth	Clear Span (ft)	Distance from End Support						Distance from Interior or Cantilever-End Support					
		Hole Diameter						Hole Diameter					
		2"	4"	6"	8"	10"	12"	2"	4"	6"	8"	10"	12"
14"	14'	1'-0"	1'-0"	1'-0"	1'-0"	2'-2"	-	1'-0"	1'-0"	1'-5"	2'-7"	3'-9"	-
	18'	1'-0"	1'-0"	1'-9"	3'-1"	4'-6"	-	1'-8"	2'-10"	3'-11"	5'-1"	6'-3"	-
	22'	1'-5"	2'-9"	4'-1"	5'-6"	7'-0"	-	4'-2"	5'-4"	6'-5"	7'-7"	8'-9"	-
	26'	3'-8"	5'-0"	6'-5"	8'-0"	9'-8"	-	6'-8"	7'-10"	8'-11"	10'-1"	11'-4"	-
16"	18'	1'-0"	1'-0"	1'-4"	2'-5"	3'-7"	4'-11"	1'-6"	2'-6"	3'-6"	4'-6"	5'-6"	6'-6"
	22'	1'-4"	2'-5"	3'-6"	4'-9"	6'-1"	7'-5"	4'-0"	5'-0"	6'-0"	7'-0"	8'-0"	9'-0"
	26'	3'-6"	4'-8"	5'-11"	7'-2"	8'-7"	10'-1"	6'-6"	7'-6"	8'-6"	9'-6"	10'-6"	11'-9"
	30'	5'-9"	7'-0"	8'-4"	9'-9"	11'-3"	12'-10"	9'-0"	10'-0"	11'-0"	12'-0"	13'-2"	14'-8"

- DESIGN ASSUMPTIONS:**
- The hole locations listed above are valid for floor joists supporting only uniform loads. The total uniform load shall not exceed 130 plf (e.g., 40 psf Live Load and 25 psf Dead Load spaced 24" oc).
  - Hole location is measured from the inside face of bearing to the center of a circular hole, from the closest support.
  - Clear Span has not been verified for these joists and is shown for informational purposes only! Verify that the joist selected will work for the span and loading conditions needed before checking hole location.
  - The maximum hole depth for circular holes is the I-joist Depth less 4"; except the maximum hole depth is 6" for 9-1/2" LPI joists, and 8" for 11-7/8" LPI joists.
  - Holes cannot be located in the span where designated "X", without further analysis by a design professional.
- NOTES:**
- Holes may be placed anywhere within the depth of the joist. A minimum 1/4" clear distance is required between the hole and the flanges.
  - Round holes up to 1-1/2" diameter may be placed anywhere in the web.
  - Perforated "knockouts" may be neglected when locating web holes.
  - Holes larger than 1-1/2" are not permitted in cantilevers without special engineering.
  - Multiple holes shall have a clear separation along the length of the joist of at least twice the length of the larger adjacent hole, or a minimum of 12" center-to-center, whichever is greater.
  - Multiple holes may be spaced closer provided they fit within the boundary of an acceptable larger hole. Example: two 3" round holes aligned parallel to the joist length may be spaced 2" apart (clear distance) provided that a 3" high by 8" long rectangle or an 8" diameter round hole are acceptable for the joist depth at that location and completely encompass the holes.
  - For conditions not covered in this table, use LP's design software or contact your local LP® SolidStart® Engineered Wood Products distributor for more information.



**2nd Flr I Joist (Flush)**

Label	Description	Width	Depth	Qty	Plies	Pcs	Length
J4	LPI 20Plus	2.5	14			4	20-0-0
J2	LPI 20Plus	2.5	14			2	14-0-0
J1	LPI 20Plus	2.5	14			4	12-0-0
J9	LPI 20Plus	2.5	14			1	10-0-0
J8	LPI 32Plus	2.5	14			12	22-0-0
J5	LPI 32Plus	2.5	14			11	22-0-0
J3	LPI 32Plus	2.5	14			7	20-0-0

**LVL/LSL (Flush)**

Label	Description	Width	Depth	Qty	Plies	Pcs	Length
FB4-B	LP-LSL 1.55E	3.5	14			1	10-0-0
FB4-A	LP-LSL 1.55E	3.5	14			1	10-0-0

**LVL/LSL (Dropped)**

Label	Description	Width	Depth	Qty	Plies	Pcs	Length
HDS-A	LP-LSL 1.55E	3.5	11.875			1	20-0-0
HD4-A	LP-LSL 1.55E	3.5	11.875			1	12-0-0

**Beam By Others (Dropped)**

Label	Description	Width	Depth	Qty	Plies	Pcs	Length
DB2	[2x10]			1	2	2	14-0-0
DB4	[2x10]			1	2	2	8-0-0
DB1	[2x10]			1	2	2	6-0-0

**Rim Board**

Label	Description	Width	Depth	Qty	Plies	Pcs	Length
R1	LP APA Rated OSB 1.125 X 14	1.125	14			15	12-0-0

**Hanger**

Label	Pcs	Description	Skew	Slope	Beam/Girder fasteners	Supported Member fasteners
H1	4	IUS2.56/14 (Min)			12 10d	
H2	1	HU416 (Max)			26 16d	12 10d

## 2ND FLOOR FRAMING

SCALE: 1/4" = 1'

**Important Notes:** WARNING: Failure to follow proper procedures for handling, storage and installation could result in unsatisfactory performance, unsafe structures and possible collapse.

These instructions are offered as a guide to good practice in the handling, storage and installation of LP® SolidStart® I-joists, LP SolidStart LVL & LP SolidStart LSL beams. They are, however, solely general recommendations and, in some instances, other or additional precautions may be desirable. In all cases, the procedures used should be as specified by the architect/engineer responsible for the entire building.

• This is not intended as a manual for selecting products and assumes that components and details have been specified correctly.

• Consult the LP SolidStart I-joist, LP SolidStart LVL & LP SolidStart LSL brochures or contact your LP SolidStart products distributor for assistance.

• All rim joists, blocking, connections and temporary bracing must be installed before erection is allowed on the structure.

• No loads other than the weight of the erectors are to be imposed on the structure before it is permanently sheathed.

• After sheathing, do not overload joists with construction materials exceeding design loads.

• LP SolidStart I-joists, LP SolidStart LVL & LP SolidStart LSL beams must be used under dry, covered and well ventilated interior conditions in which the equivalent moisture content in lumber will not exceed 16%.

**Handling & Storage:** Keep LP SolidStart I-joists, LP SolidStart LVL & LP SolidStart LSL beams dry.

- Unload products carefully by lifting. Support the bundles to reduce excessive bowing. Individual products should be handled in a manner which prevents physical damage during measuring, cutting, erection, etc. I-joists should be handled vertically and not flatwise.
- Keep stored in wrapped and strapped bundles, stacked no more than 10' high. Support and separate bundles with 2 x 4 (or larger) stickers spaced no more than 10' apart. Keep stickers in line vertically.
- Product must not be stored in contact with the ground, or have prolonged exposure to the weather.
- Use forklifts and cranes carefully to avoid damaging product.
- Do not use visually damaged product.
- Call your local LP SolidStart Engineered Wood Products distributor for assistance when damaged products are encountered.

2160 Satellite Blvd., Suite 450  
Duluth, GA 30097  
888-613-5078

**Dealer:**  
84 Lumber-Fayetteville #2307  
620 Belt Road  
Fayetteville, NC 28301  
(910) 867-9185

**Project:**  
CL3067A GL

**Created:**  
May 11, 2015

**Layout Name:**  
CL3067A GL

**Description:**  
Caviness Land  
CL3067A GL

**Designer:**  
Kyle Militzer

**Revised:**  
April 27, 2020

**2nd Flr**

**Design Method:** ASD (USA)

**Building Code:** IRC 2012

**Floor:**

Loads	Value
Live	40
Dead	10

**Deflection Joist:**

Member	Deflection
LL Span L/	480
TL Span L/	240
LL Cant 2L/	360
TL Cant 2L/	360

**Deflection Girder:**

Member	Deflection
LL Span L/	360
TL Span L/	240
LL Cant 2L/	360
TL Cant 2L/	360

**Decking:** OSB  
23/32 APA Rated Sturd-I-Floor

**Fastener:** Nailed & Glued

**Legend:**

- 2x4 Non-Brg Wall
- 3.5" Non-Brg Wall
- 5.5" Non-Brg Wall
- Wall
- Partition Wall (Non-Load-Bearing)
- Wall Opening
- LP APA Rated OSB 1.125 X 14
- LPI 20Plus 14
- LPI 32Plus 14
- LP-LSL 1.55E 3.5 X 11.875 (Dropped)
- LP-LSL 1.55E 3.5 X 14
- 1.5 X 9.25 (Dropped)