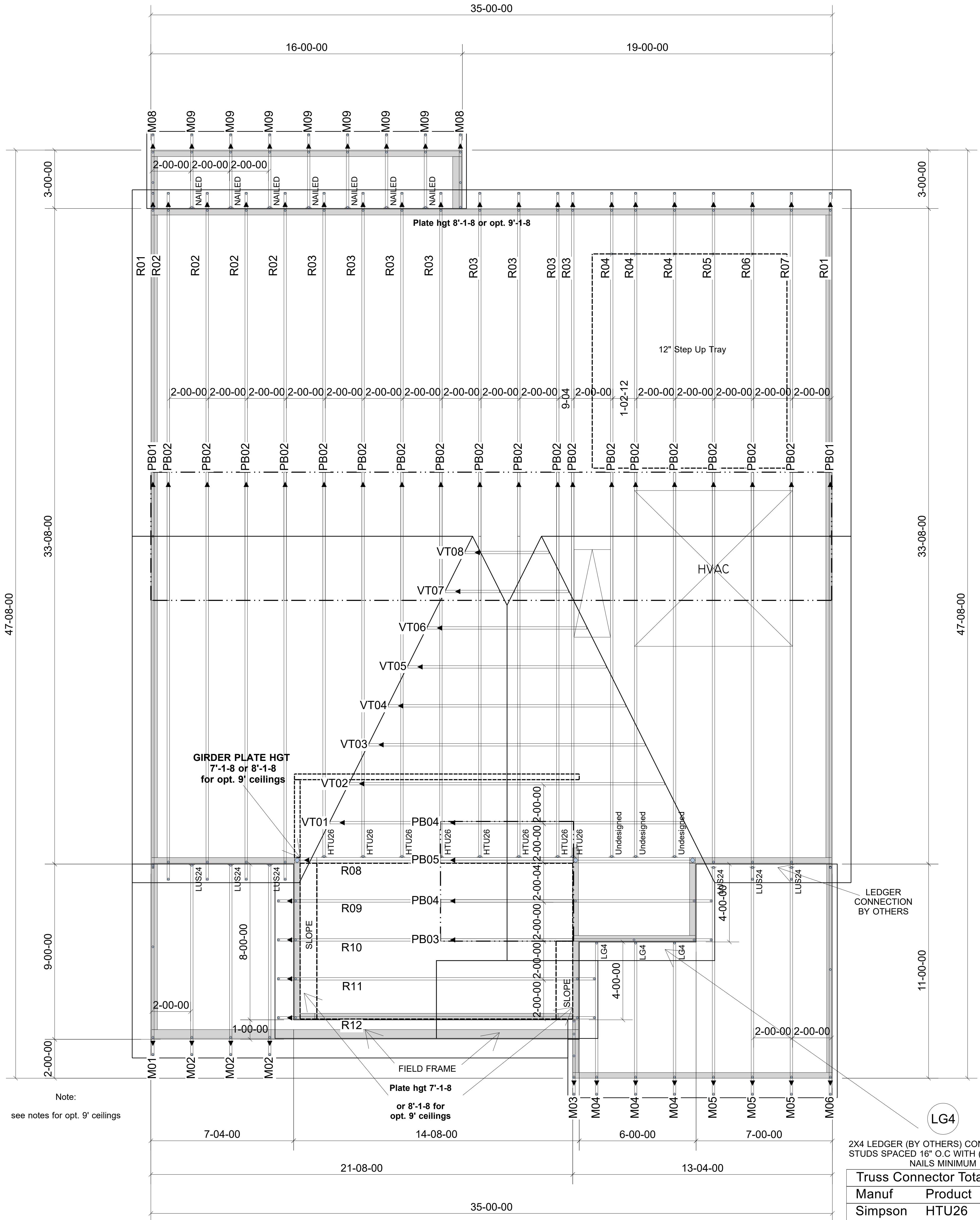


WARNING! Long span trusses, 60' or greater in length, require extreme care and experience for proper and safe handling and installation. For general handling and installation guidance, see the "Guide to Good Practice for Handling, Installing, Restraining & Bracing of Metal Plate Connected Wood Trusses" ("BCS"), JOINTLY PRODUCED BY SBCA and TPI. For project specific guidance, consult with a registered design professional. ATLANTIC assumes no responsibility for the handling, installation or bracing of trusses.



2X4 LEDGER (BY OTHERS) CONNECTED TO STUDS SPACED 16" O.C WITH (3) .128X3.25" NAILS MINIMUM

Truss Connector Total List		
Manuf	Product	Qty
Simpson	HTU26	8
Simpson	LUS24	6

Note:
see notes for opt. 9' ceilings

▲ = LEFT END OF TRUSS **NOT FOR CONSTRUCTION**



Moncks Corner/Easley, SC (800) 475-3999
Sparta, NC (336) 372-2226

REVISIONS:

Client: **STARLIGHT HOMES-RALEIGH**
 Job: **LOT 49 CROSSING @ ANDERSON**
 Plan Information: **HAVENBROOK-A**

NOT TO SCALE Date: / /
 Drawn By: AMH Job #: Sales Rep: KYLE GIBSON
 22-2664-R01 Phone:

ROOF