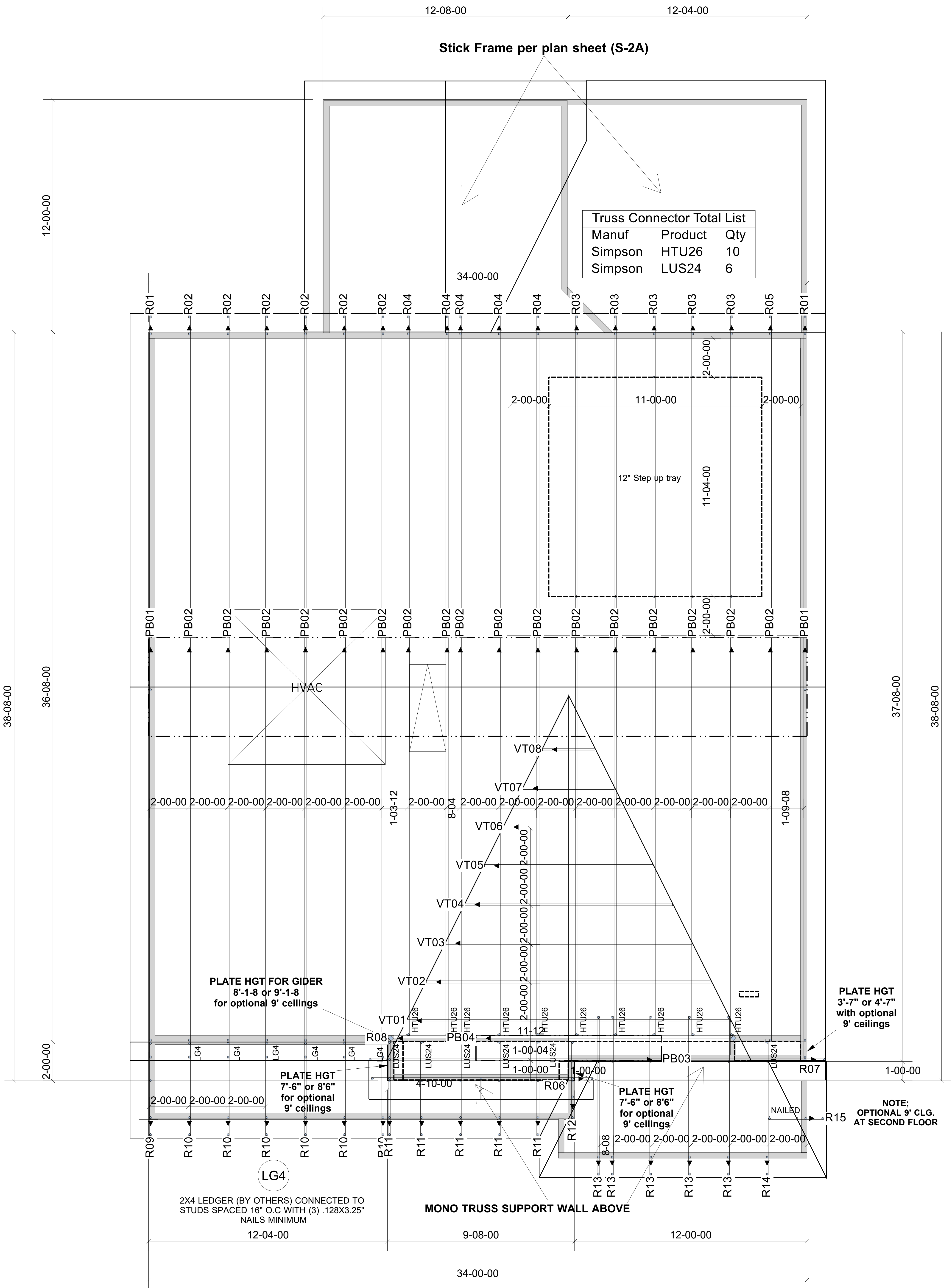


**WARNING!** Long span trusses, 60' or greater in length, require extreme care and experience for proper and safe handling and installation. For general handling and installation guidance, see the "Guide to Good Practice for Handling, Installing, Restraining & Bracing of Metal Plate Connected Wood Trusses" (BCS1), JOINTLY PRODUCED BY SBCA and TPI. For project specific guidance, consult with a registered design professional. ATLANTIC assumes no responsibility for the handling, installation or bracing of trusses.



▲ = LEFT END OF TRUSS

**NOT FOR CONSTRUCTION**



Moncks Corner/Easley, SC (800) 475-3999  
Sparta, NC (336) 372-2226

REVISIONS:

Client: **STARLIGHT HOMES-RALEIGH**  
Job: **LOT 48 CROSSING @ ANDERSO**  
Plan Information:  
**KESSLER-A**

NOT TO SCALE

Date: / /

Drawn By:

AMH

Job #:

Sales Rep: KYLE GIBSON

22-2663-R01

Phone:

ROOF