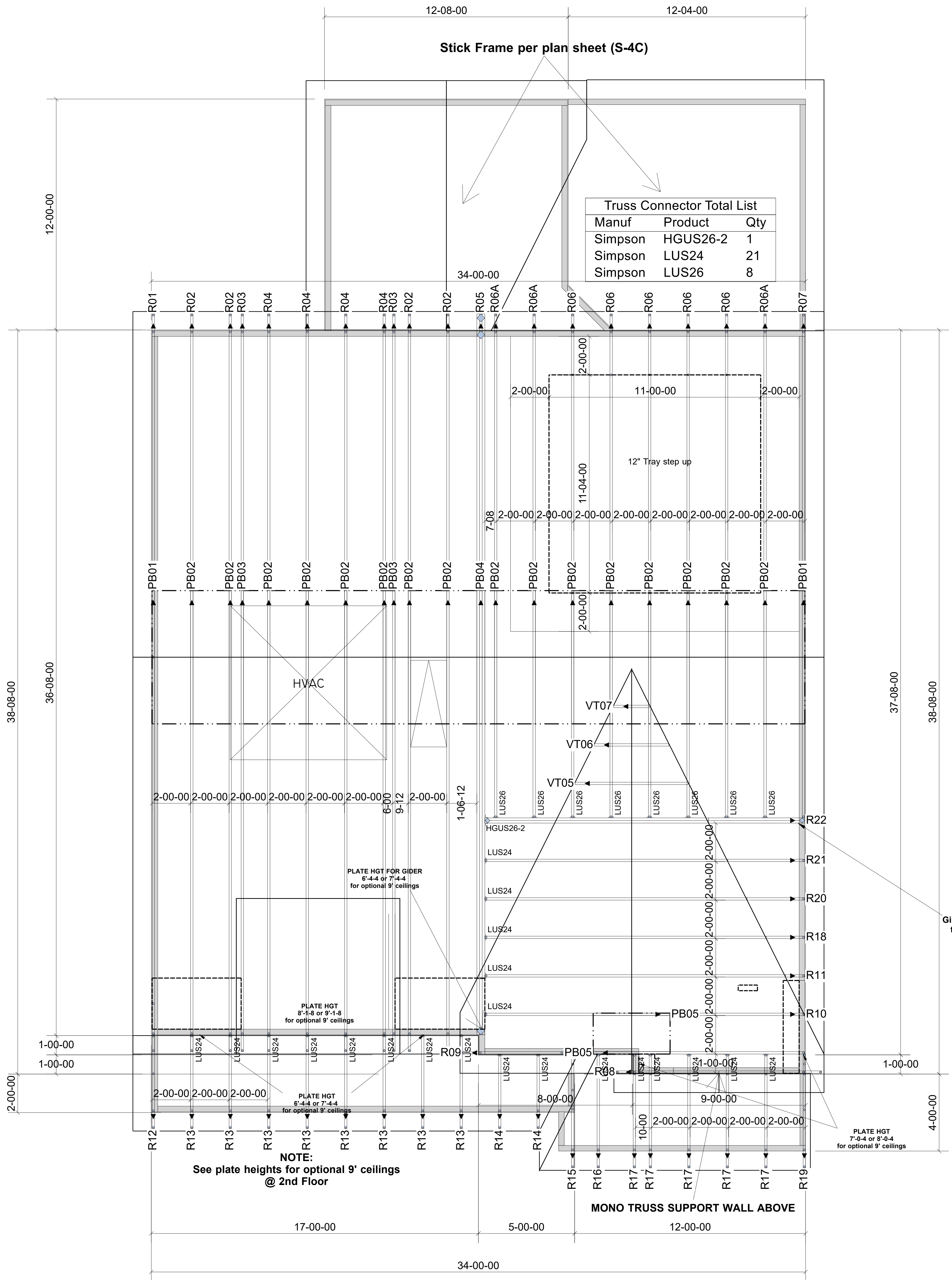


WARNING! Long span trusses, 60' or greater in length, require extreme care and experience for proper and safe handling and installation. For general handling and installation guidance, see the "Guide to Good Practice for Handling, Restraining & Bracing of Metal Plate Connected Wood Trusses" ("BCSI"), JOINTLY PRODUCED BY SBCA and TPI. For project specific guidance, consult with a registered design professional. ATLANTIC assumes no responsibility for the handling, installation or bracing of trusses.



Girder truss was shift to get R05 to work

▲ = LEFT END OF TRUSS

NOT FOR CONSTRUCTION



Moncks Corner/Easley, SC (800) 475-3999
Sparta, NC (336) 372-2226

REVISIONS:

Client: STARLIGHT HOMES-RALEIGH	
Job: LOT 19 CROSSING @ ANDERSO	
Plan Information: KESSLER-C	
NOT TO SCALE	Date: / /
Drawn By: AMH	Job #: Sales Rep: KYLE GIBSON 22-2661-R01 Phone:

ROOF