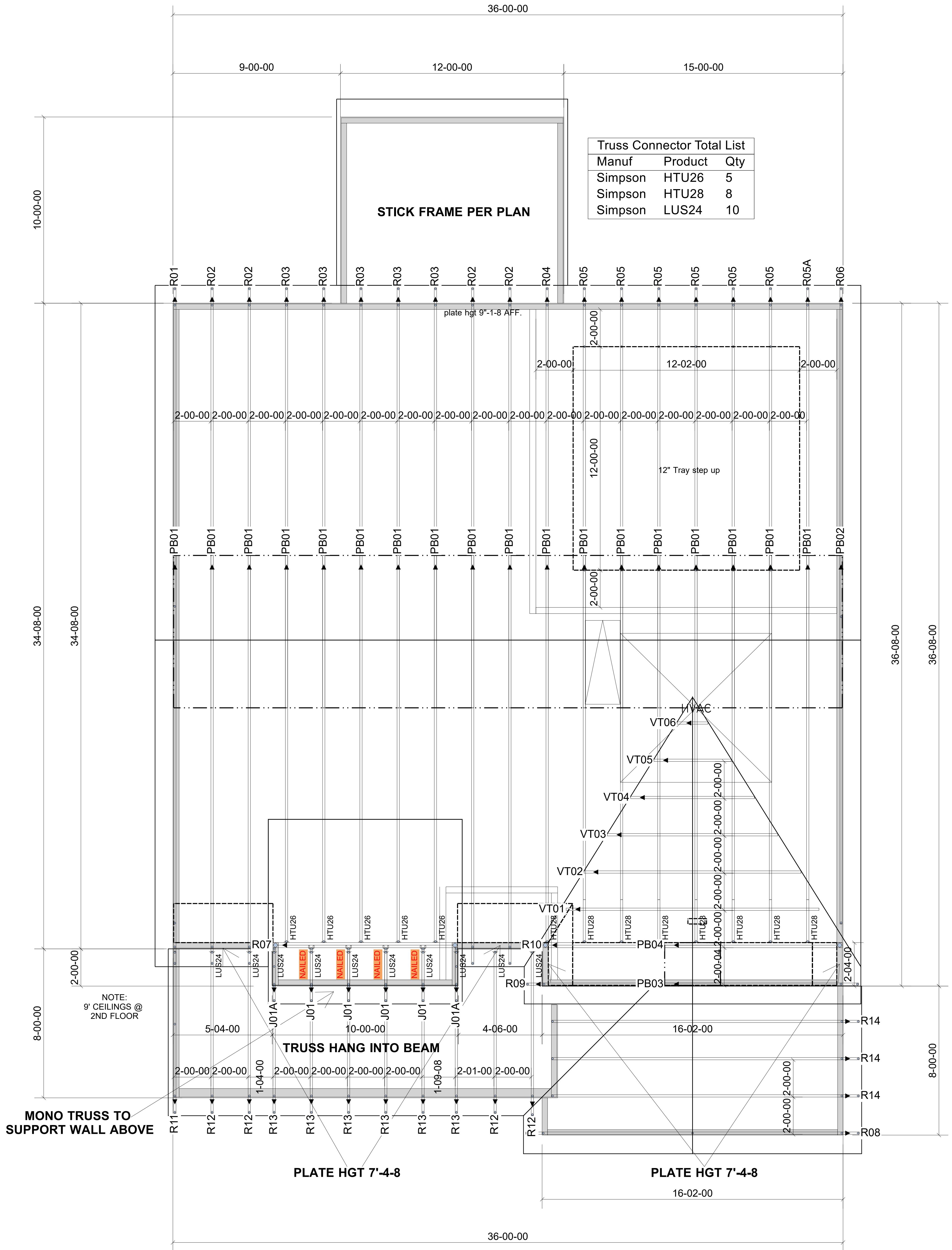


WARNING! Long span trusses, 60' or greater in length, require extreme care and experience for proper and safe handling and installation. For general handling and installation guidance, see the "Guide to Good Practice for Handling, Installing, Restraining & Bracing of Metal Plate Connected Wood Trusses" ("BCSI"), JOINTLY PRODUCED BY SBCA and TPI. For project specific guidance, consult with a registered design professional. ATLANTIC assumes no responsibility for the handling, installation or bracing of trusses.

Truss Connector Total List		
Manuf	Product	Qty
Simpson	HTU26	5
Simpson	HTU28	8
Simpson	LUS24	10



▲ = LEFT END OF TRUSS

NOT FOR CONSTRUCTION



Moncks Corner/Easley, SC (800) 475-3999
Sparta, NC (336) 372-2226

REVISIONS:

Client: STARLIGHT HOMES-RALEIGH
Job: LOT 65 CROSSING @ ANDERSO
Plan Information:
BRAXTON-C

NOT TO SCALE

Date: / /

Drawn By:

AMH

Job #:

22-2668-R01

Sales Rep: KYLE GIBSON

Phone:

ROOF