

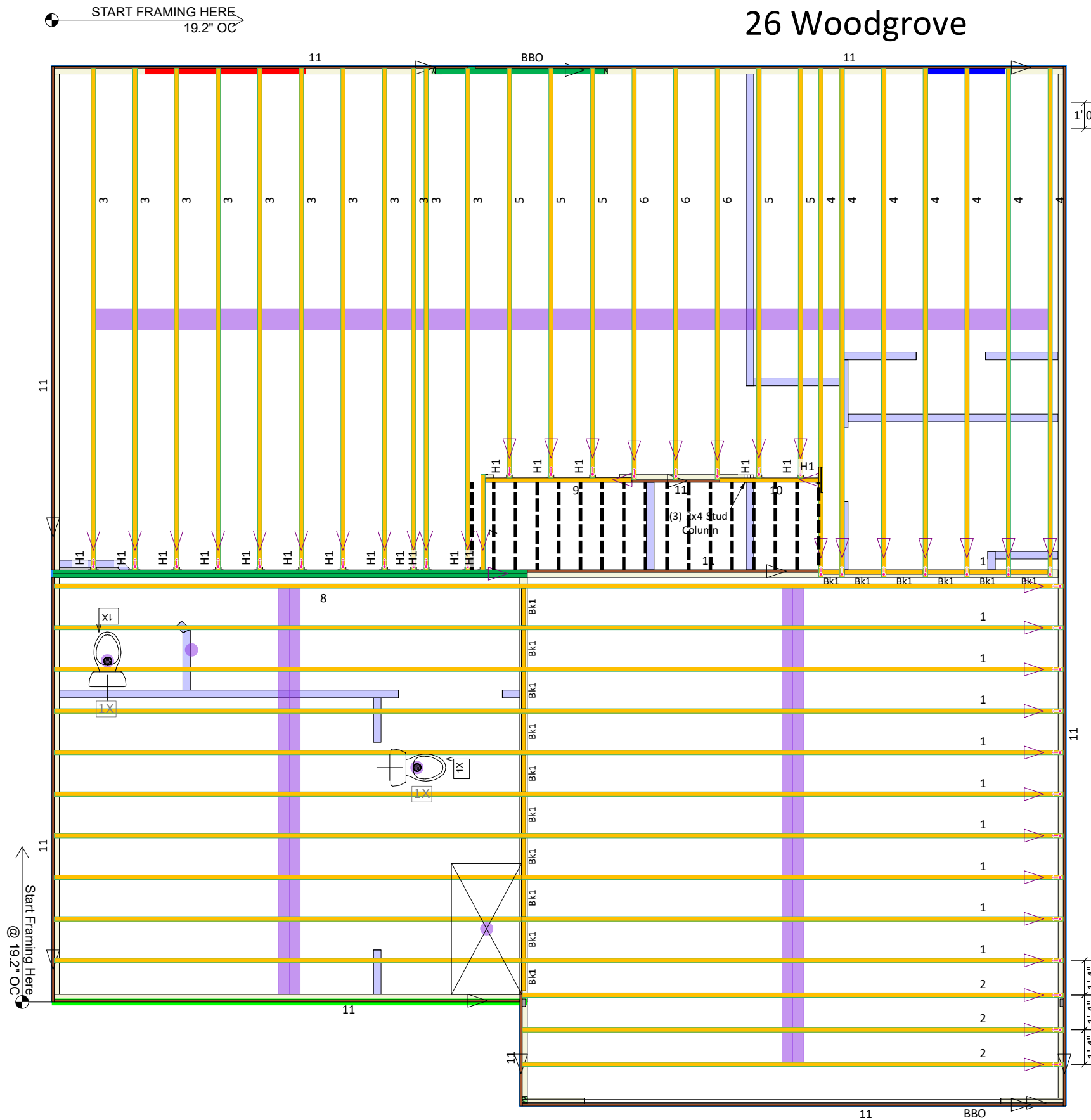
All I-Joist and Versa-Lam Beams
Must be Installed per The
Boise Cascade Installation Guide!

DR Horton Hayden Slab K 26 Woodgrove

Products				
PlotID	Length	Product	Plies	Net Qty
1	39' 0"	14" BCI® 5000s-1.8	1	10
2	21' 0"	14" BCI® 5000s-1.8	1	3
3	20' 0"	14" BCI® 5000s-1.8	1	11
4	20' 0"	14" BCI® 5000s-1.8	1	7
5	16' 0"	14" BCI® 5000s-1.8	1	5
6	16' 0"	14" BCI® 5000s-1.8	1	3
7	4' 0"	14" BCI® 5000s-1.8	1	1
8	20' 0"	1-3/4" x 14" VERSA-LAM® LVL 2.1E 3100 SP	2	2
9	6' 0"	14" BCI® 5000s-1.8	1	1
10	4' 0"	14" BCI® 5000s-1.8	1	1
11	12' 0"	1-1/8" x 14" BC RIM BOARD OSB	1	15
Bk1	1' 5 3/16"	14" BCI® 5000s-1.8	1	16

Accessories				
PlotID	Length	Product	Plies	Net Qty
SB12	1' 2 1/16"	2x4 SPF No.2	1	1
SB35	1' 2 1/16"	2x4 SPF No.2	1	1
	1' 0"	Backer Blocks (14" BCI® 5000s-1.8)	1	2

Connector Summary			
PlotID	Qty	Manuf	Product
H1	18	Simpson	IUS2.06/14



Squash Blocks Required
Under The Ends Of All LVL
And Point Loads For Load
Transfer - See Details

Second Floor Layout

Revisions:	BY:



DR Horton
Hayden Slab K
26 Woodgrove
84 Lumber EWP

BC FRAMER II
Scale: NTS
By: GO
Arch Date: 04-24-2019
Struc Date: 05-20-2019
DWG: 07-11-2019
Sheet: 2/4