

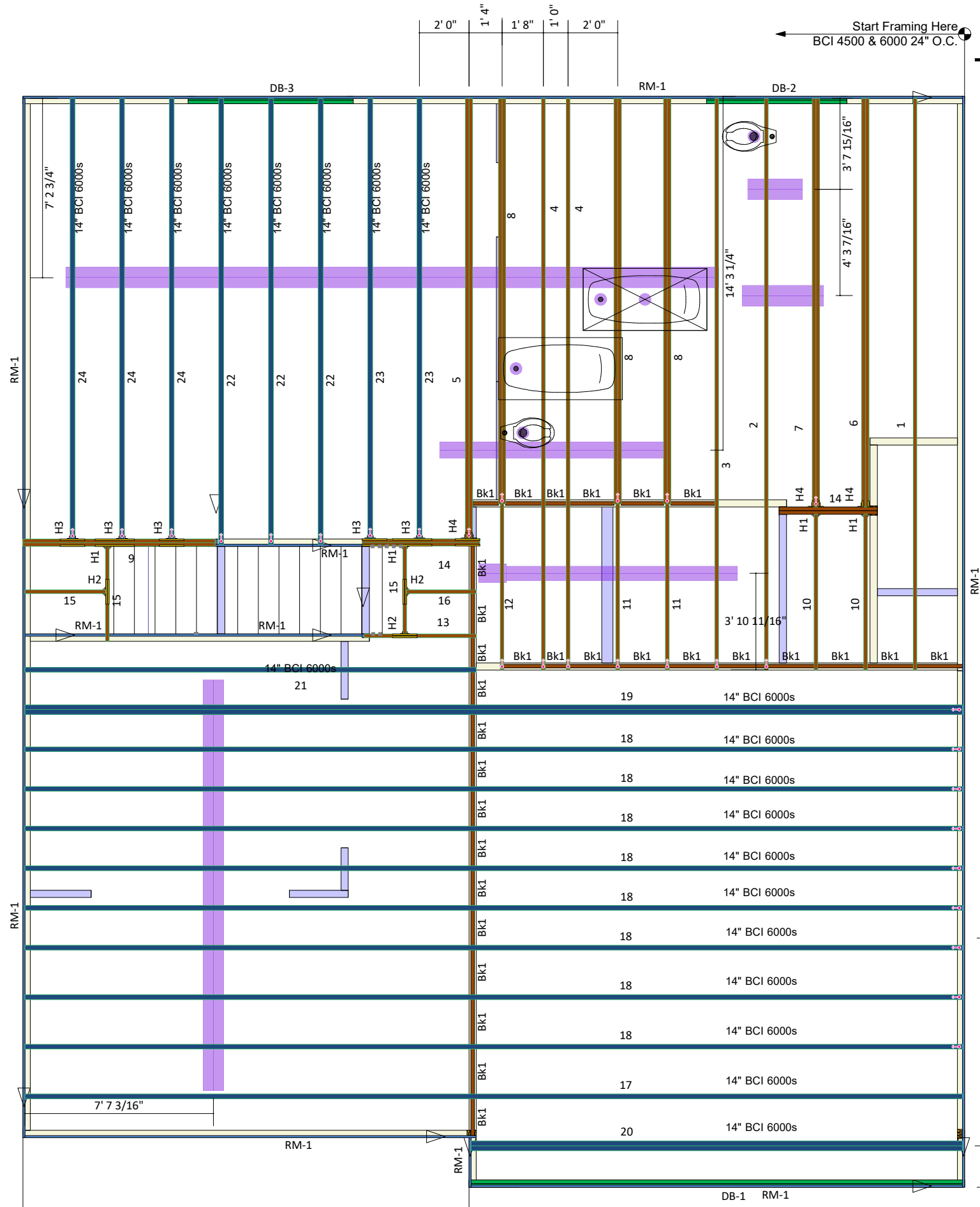
All I-Joist and Versa-Lam Beams  
Must be Installed per The  
Boise Cascade Installation Guide!

PCBD	Length	Product	Qty	Notes	FSB Type
1	24' 0"	14" BCI 6000s-1.8	1		MFD
2	24' 0"	14" BCI 6000s-1.8	1		MFD
3	24' 0"	14" BCI 6000s-1.8	1		MFD
4	24' 0"	14" BCI 6000s-1.8	2		MFD
5	18' 0"	14" BCI 6000s-1.8	2		MFD
6	17' 0"	14" BCI 6000s-1.8	2		MFD
7	17' 0"	14" BCI 6000s-1.8	2		MFD
8	17' 0"	14" BCI 6000s-1.8	2		MFD
9	8' 0"	14" BCI 6000s-1.8	2		MFD
10	7' 0"	14" BCI 6000s-1.8	1		MFD
11	7' 0"	14" BCI 6000s-1.8	1		MFD
12	7' 0"	14" BCI 6000s-1.8	1		MFD
13	9' 0"	14" BCI 6000s-1.8	2		MFD
14	9' 0"	14" BCI 6000s-1.8	2		MFD
15	9' 0"	14" BCI 6000s-1.8	1		MFD
16	3' 0"	14" BCI 6000s-1.8	1		MFD
17	38' 0"	14" BCI 6000s-1.8	1		MFD
18	38' 0"	14" BCI 6000s-1.8	2		MFD
19	38' 0"	14" BCI 6000s-1.8	2		MFD
20	20' 0"	14" BCI 6000s-1.8	2		MFD
21	19' 0"	14" BCI 6000s-1.8	1		MFD
22	19' 0"	14" BCI 6000s-1.8	1		MFD
23	18' 0"	14" BCI 6000s-1.8	1		MFD
24	18' 0"	14" BCI 6000s-1.8	1		MFD
25	4' 0"	14" BCI 6000s-1.8	2		MFD
26	12' 0"	1" x 14" BC RM BOARD OSB	1		MFD
BK1	2' 0"	14" BCI 6000s-1.8	1		MFD

PCBD	Qty	Manufacturer	Product
H1	4	Simpson	RJ218114
H2	3	Simpson	RJ218114
H3	5	Simpson	RJ223714
H4	3	Simpson	RJ223814

Part	Label	Length	Height	Thickness	Blot Size	Load Bearing	Sheathing	FSB Type
N1A	1	24' 0"	3 1/2"	1 1/2"	2x4 SFF Stud	LB	N/A	FF
N1A	2	19' 0"	3 1/2"	1 1/2"	2x4 SFF Stud	LB	N/A	FF
N1A	3	22' 3 3/4"	3 1/2"	1 1/2"	2x4 SFF Stud	NLB	N/A	FF
N1A	9	24' 1 1/2"	3 1/2"	1 1/2"	2x4 SFF Stud	NLB	N/A	FF
N1A	10	0' 3 1/2"	3 1/2"	1 1/2"	2x4 SFF Stud	NLB	N/A	FF
N1A	11	0' 1 1/2"	3 1/2"	1 1/2"	2x4 SFF Stud	NLB	N/A	FF
N1A	12	4' 9 1/4"	3 1/2"	1 1/2"	2x4 SFF Stud	NLB	N/A	FF
N1A	13	2' 5 1/2"	3 1/2"	1 1/2"	2x4 SFF Stud	NLB	N/A	FF
N1A	15	3' 1 1/2"	3 1/2"	1 1/2"	2x4 SFF Stud	NLB	N/A	FF
N1A	16	3' 6 1/2"	3 1/2"	1 1/2"	2x4 SFF Stud	NLB	N/A	FF
N1A	17	3' 6 1/2"	3 1/2"	1 1/2"	2x4 SFF Stud	NLB	N/A	FF
N1A	18	1' 8 1/2"	3 1/2"	1 1/2"	2x4 SFF Stud	NLB	N/A	FF
N1A	20	6' 5 3/4"	3 1/2"	1 1/2"	2x4 SFF Stud	LB	N/A	FF
N1A	22	17' 8 1/4"	3 1/2"	1 1/2"	2x4 SFF Stud	LB	N/A	FF
N1A	23	12' 0"	3 1/2"	1 1/2"	2x4 SFF Stud	LB	N/A	FF
N1A	24	3' 6 1/4"	3 1/2"	1 1/2"	2x4 SFF Stud	LB	N/A	FF
N1A	26	0' 9 1/2"	3 1/2"	1 1/2"	2x4 SFF Stud	LB	N/A	FF
N1A	51	2' 4"	3 1/2"	1 1/2"	2x4 SFF Stud	NLB	N/A	FF
N1A	52	2' 4"	3 1/2"	1 1/2"	2x4 SFF Stud	NLB	N/A	FF
N1A	56	3' 1 1/2"	3 1/2"	1 1/2"	2x4 SFF Stud	LB	N/A	FF
N1A	58	0' 0"	3 1/2"	1 1/2"	2x4 SFF Stud	NLB	N/A	FF
N1A	62	1' 3 3/8"	3 1/2"	1 1/2"	2x4 SFF Stud	NLB	N/A	FF
N1A	E1	2' 0"	3 1/2"	1 1/2"	2x4 SFF Stud	LB	N/A	FF
N1A	E2	1' 8 1/2"	3 1/2"	1 1/2"	2x4 SFF Stud	LB	N/A	FF
N1A	E3	18' 3 1/2"	3 1/2"	1 1/2"	2x4 SFF Stud	LB	N/A	FF
N1A	E4	4' 1 1/2"	3 1/2"	1 1/2"	2x4 SFF Stud	LB	N/A	FF
N1A	E5	0' 1 1/2"	3 1/2"	1 1/2"	2x4 SFF Stud	LB	N/A	FF
N1A	E6	22' 10 1/2"	3 1/2"	1 1/2"	2x4 SFF Stud	LB	N/A	FF
N1A	E7	2' 0"	3 1/2"	1 1/2"	2x4 SFF Stud	LB	N/A	FF
N1A	E14	0' 0"	3 1/2"	1 1/2"	2x4 SFF Stud	LB	N/A	FF
N1A	E15	14' 0"	3 1/2"	1 1/2"	2x4 SFF Stud	LB	N/A	FF
N1A	E17	20' 6 1/2"	3 1/2"	1 1/2"	2x4 SFF Stud	LB	N/A	FF

Squash Blocks Required  
Under The Ends Of All LVL  
And Point Loads For Load  
Transfer - See Details



Second Floor Layout

# DR Horton The Wilmington Slab C 24 Woodgrove

Revisions:	BY:



**84 LUMBER**  
Build On What We Know. About Engineered Lumber.  
600 Rozzelle's Ferry Road  
Charlotte, NC 28214  
(704) 393-1456 Fax (704) 392-1331

**DR Horton**  
The Wilmington Slab C  
84 Lumber Company  
Charlotte, North Carolina

BC FRAMER II
Scale: NTS
Arch Date: 2/28/2020 Struc Date: 11/30/2018
Designer: GAT
File: DWG:The Wilmington
Sheet: 2/2