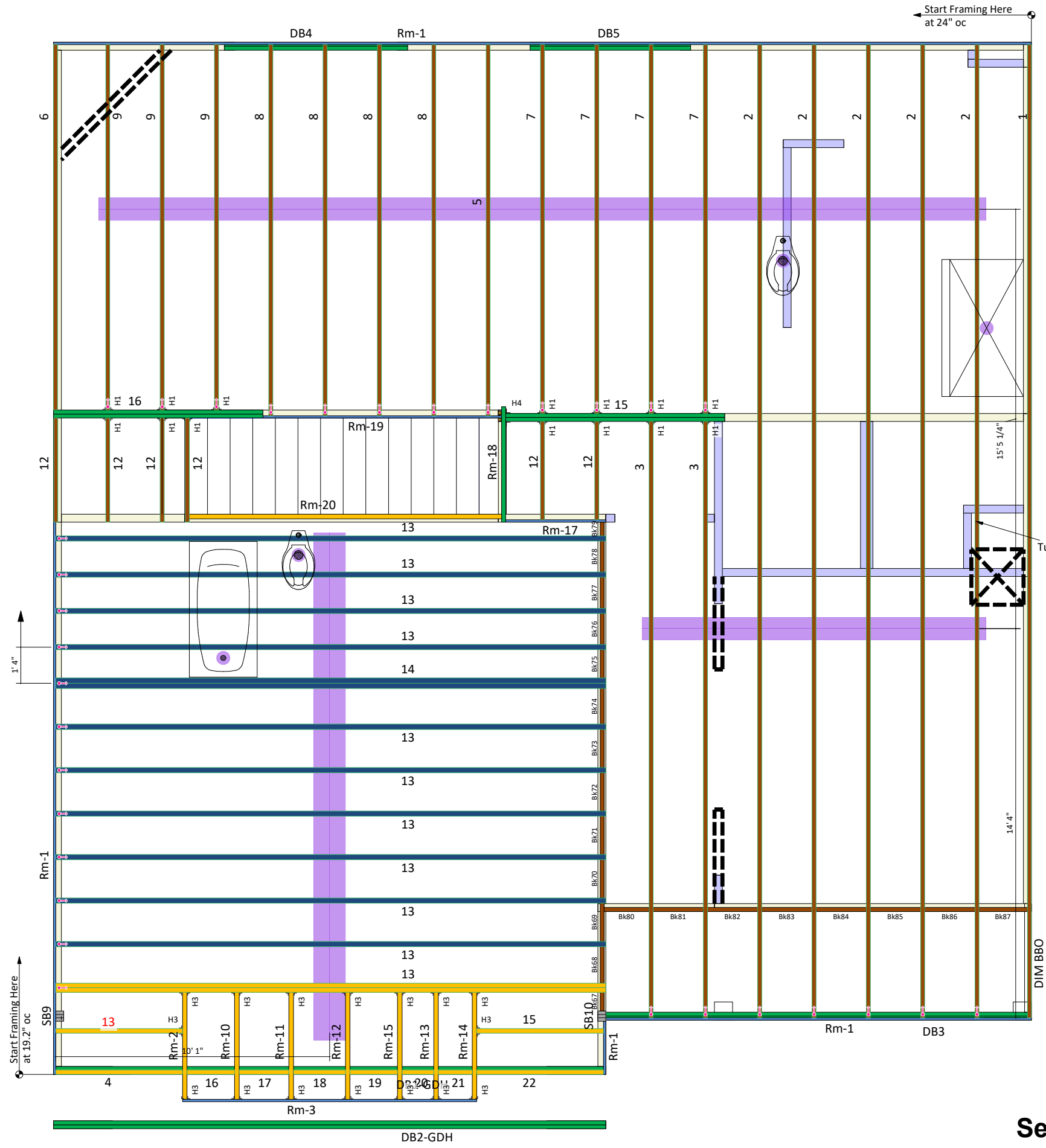


# D R Horton Penwell Slab K 22 Woodgrove

Revisions:	BY:



PlotID	Length	Product	Plies	Net Qty
1	36' 0"	14" BCI® 4500s-1.8	1	1
2	36' 0"	14" BCI® 4500s-1.8	1	5
3	22' 0"	14" BCI® 4500s-1.8	1	2
5	14' 0"	14" BCI® 4500s-1.8	1	1
6	14' 0"	14" BCI® 4500s-1.8	1	1
7	14' 0"	14" BCI® 4500s-1.8	1	4
8	14' 0"	14" BCI® 4500s-1.8	1	4
9	14' 0"	14" BCI® 4500s-1.8	1	3
12	4' 0"	14" BCI® 4500s-1.8	1	6
13	21' 0"	14" BCI® 5000s-1.8	2	2
13	5' 0"	14" BCI® 5000s-1.8	1	1
15	5' 0"	14" BCI® 5000s-1.8	1	1
22	5' 0"	14" BCI® 5000s-1.8	1	1
4	5' 0"	14" BCI® 5000s-1.8	1	1
16	2' 0"	14" BCI® 5000s-1.8	1	1
17	2' 0"	14" BCI® 5000s-1.8	1	1
18	2' 0"	14" BCI® 5000s-1.8	1	1
19	2' 0"	14" BCI® 5000s-1.8	1	1
20	2' 0"	14" BCI® 5000s-1.8	1	1
21	2' 0"	14" BCI® 5000s-1.8	1	1
13	21' 0"	14" BCI® 6000s-1.8	1	10
14	21' 0"	14" BCI® 6000s-1.8	2	2
15	10' 0"	1-3/4" x 14" VERSA-LAM® 2.0 3100 SP	2	2
16	8' 0"	1-3/4" x 14" VERSA-LAM® 2.0 3100 SP	2	2
Rm-1	12' 0"	1" x 14" BC RIM BOARD OSB	1	7
Rm-17	12' 0"	1" x 14" BC RIM BOARD OSB	1	1
Rm-19	12' 0"	1" x 14" BC RIM BOARD OSB	1	1
Rm-3	12' 0"	1" x 14" BC RIM BOARD OSB	1	1
Rm-18	12' 0"	1-3/4" x 14" VERSA-LAM® 2.0 3100 SP	1	1
Rm-10	12' 0"	14" BCI® 5000s-1.8	1	1
Rm-11	12' 0"	14" BCI® 5000s-1.8	1	1
Rm-12	12' 0"	14" BCI® 5000s-1.8	1	1
Rm-13	12' 0"	14" BCI® 5000s-1.8	1	1
Rm-14	12' 0"	14" BCI® 5000s-1.8	1	1
Rm-15	12' 0"	14" BCI® 5000s-1.8	1	1
Rm-2	12' 0"	14" BCI® 5000s-1.8	1	1
Rm-20	12' 0"	14" BCI® 5000s-1.8	1	1
Bk67	2' 0"	14" BCI® 4500s-1.8	1	1
Bk68	2' 0"	14" BCI® 4500s-1.8	1	1
Bk69	2' 0"	14" BCI® 4500s-1.8	1	1
Bk70	2' 0"	14" BCI® 4500s-1.8	1	1
Bk71	2' 0"	14" BCI® 4500s-1.8	1	1
Bk72	2' 0"	14" BCI® 4500s-1.8	1	1
Bk73	2' 0"	14" BCI® 4500s-1.8	1	1
Bk74	2' 0"	14" BCI® 4500s-1.8	1	1
Bk75	2' 0"	14" BCI® 4500s-1.8	1	1
Bk76	2' 0"	14" BCI® 4500s-1.8	1	1
Bk77	2' 0"	14" BCI® 4500s-1.8	1	1
Bk78	2' 0"	14" BCI® 4500s-1.8	1	1
Bk79	2' 0"	14" BCI® 4500s-1.8	1	1

Tub is Assumed to be Raised @ Optional Owner's Bath

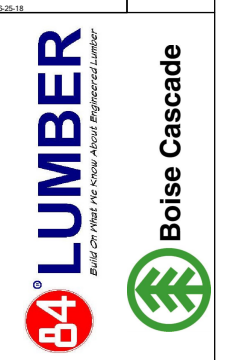
PlotID	Length	Product	Plies	Net Qty
Bk80	2' 0"	14" BCI® 4500s-1.8	1	1
Bk81	2' 0"	14" BCI® 4500s-1.8	1	1
Bk82	2' 0"	14" BCI® 4500s-1.8	1	1
Bk83	2' 0"	14" BCI® 4500s-1.8	1	1
Bk84	2' 0"	14" BCI® 4500s-1.8	1	1
Bk85	2' 0"	14" BCI® 4500s-1.8	1	1
Bk86	2' 0"	14" BCI® 4500s-1.8	1	1
Bk87	2' 0"	14" BCI® 4500s-1.8	1	1

Connector Summary			
PlotID	Qty	Manuf	Product
H1	14	Simpson	IUS1.81/14
H3	16		IHFL2014
H4	1		IUS1.81/14

All I-Joist and Versa-Lam Beams Must be Installed per The Boise Cascade Installation Guide!

Squash Blocks Required Under The Ends Of All LVL And Point Loads For Load Transfer - See Details

## Second Floor Layout



**SALES PRESENTATION DRAWING**  
No structural or dimensional check has been made of this design drawings of the building, therefore purchaser is to check and approve all dimensions, quantities, loads, and details carefully. This drawing has not been check by Boise Engineering.

D R Horton  
Penwell Slab K  
22 Woodgrove  
84 Lumber EWP

BC FRAMER II
Plan Date: 1/22/2018
Structural Date: 4/15/2018
By: BAF
Sheet: 2/3