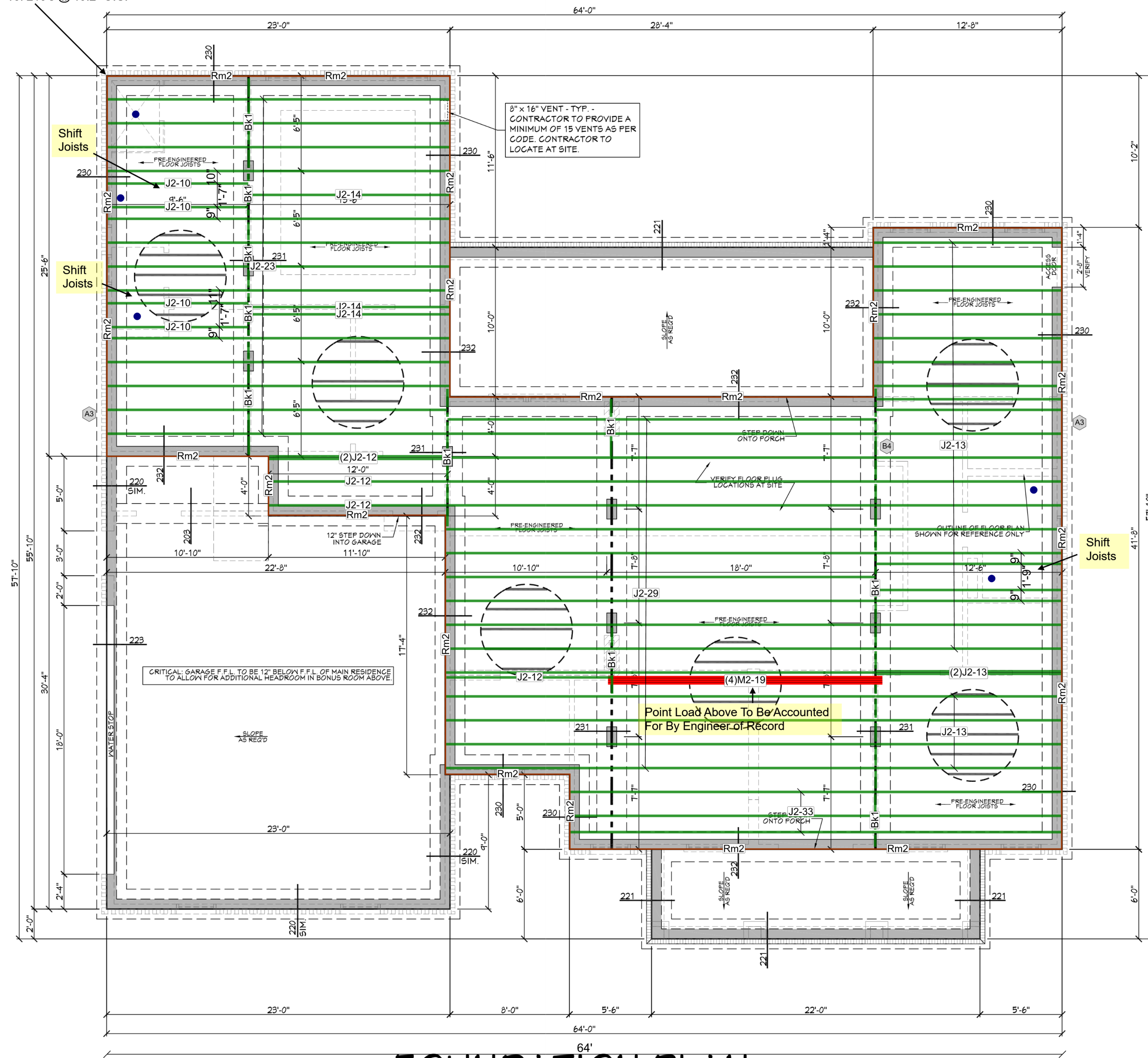


Start Framing Here
11-7/8" TJI 210's @ 19.2" O.C.



201 FOUNDATION PLAN
SCALE: 1/4" = 1'-0"

Joist Placement Plan For Material Estimating Purposes Only. All Joist Sizing, Spacing, and Beam Sizing to Be Determined By Engineer of Record.

Tag	Qty	Product	Len	Cut Logic
Floor Joist				
J2	34	3/2-1/16"x11-7/8" TJI@ 210	34'	3x(1/33)
J2	30	16/2-1/16"x11-7/8" TJI@ 210	30'	16x(1/29)
J2	24	13/2-1/16"x11-7/8" TJI@ 210	24'	13x(1/23)
J2	14	29/2-1/16"x11-7/8" TJI@ 210	14'	3x(1/14) 26x(1/13)
J2	12	5/2-1/16"x11-7/8" TJI@ 210	12'	5x(1/12)
J2	10	4/2-1/16"x11-7/8" TJI@ 210	10'	4x(1/10)
Floor Joist Blocking				
Bk1		6/2-1/16"x11-7/8" TJI@ 210		RL
Beam				
M2		4/1-3/4"x11-7/8" Microllam@ LVL		20'4x(1/19)
Rim				
Rm2		16/1-1/8"x11-7/8" TJI@ Rim Board		16'16/16



Harrington Properties
Megan Kappel Residence
1st Floor Layout

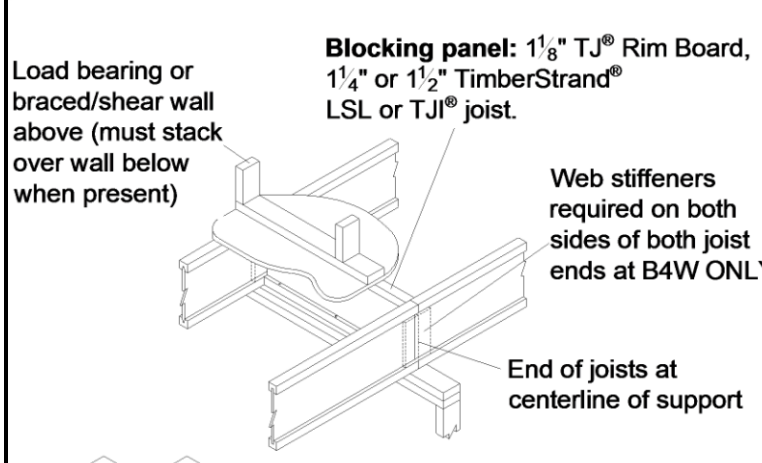
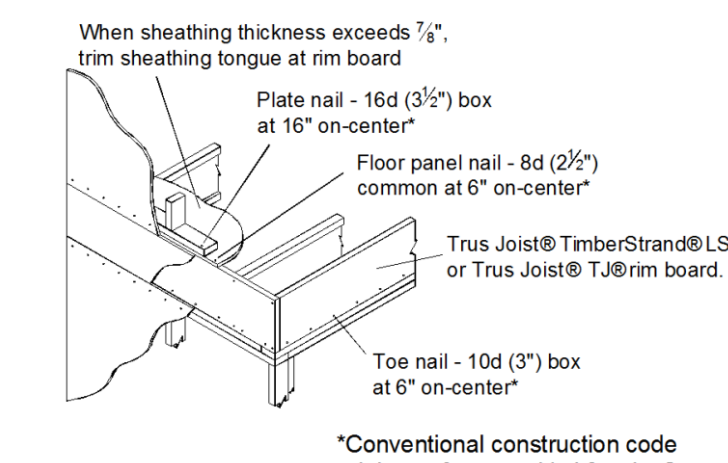
These joist placement layouts have been prepared for the specification of TrusJoist products only. This service is solely intended for product application assurance, and is not intended to circumvent the need for a design professional as determined by the building codes. The designer of record and/or builder/framer is responsible to assure these drawings are compatible with the overall project.

GENERAL NOTES:

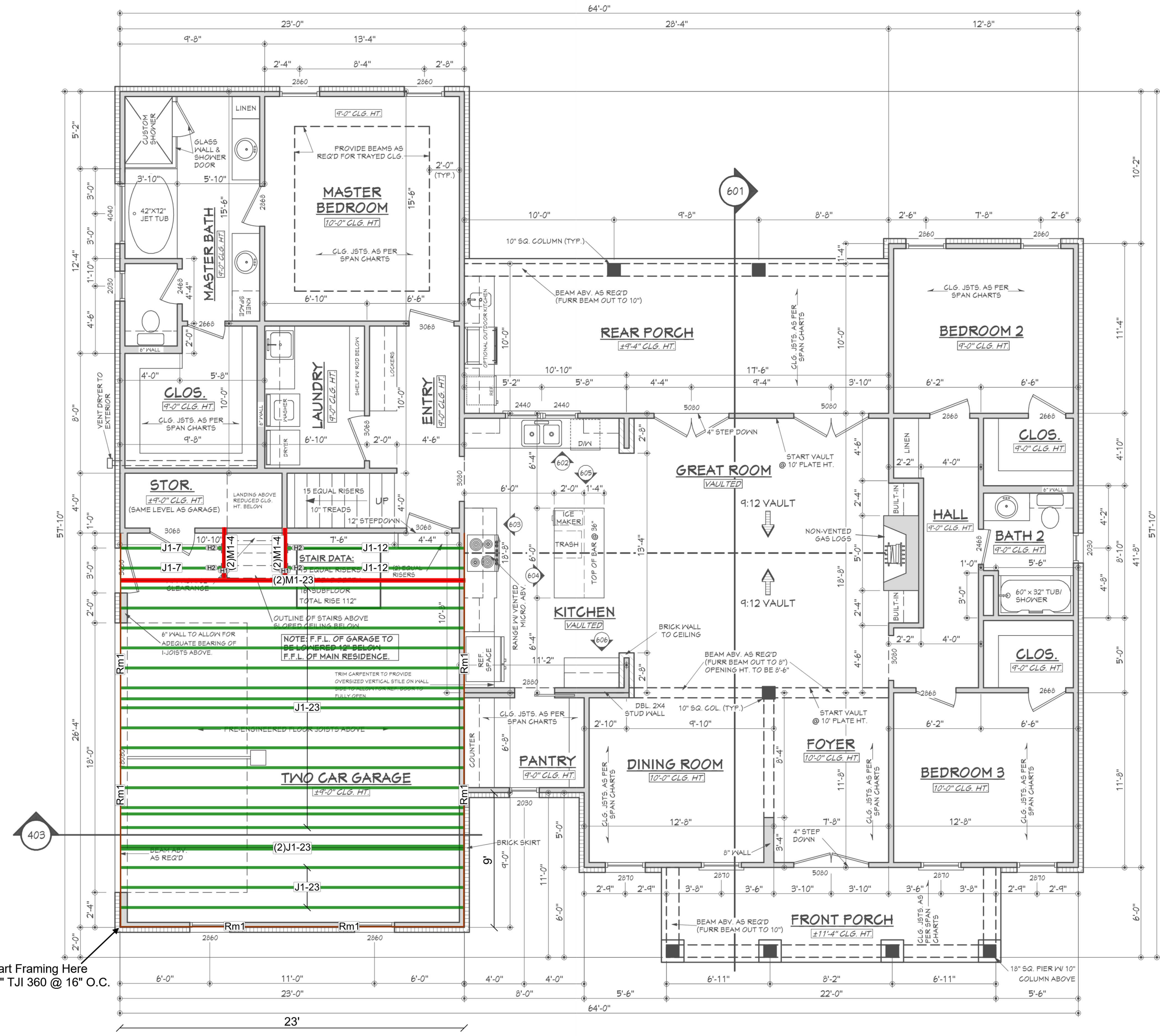
- Joists may be shifted up to 3" from on center spacing to avoid hanger interference, flush beams and/or plumbing drops. **DO NOT CUT JOIST FLANGES.**
- All EWP beams have been designed assuming full width support of the members/piles, unless noted otherwise.
- This drawing may contain deviations from the original project documents. It is the responsibility of the contractor to notify the project Design Professional of these deviations to verify conformance with the original design intent of the project.

GENERAL NOTES:

- This layout is intended for the use of TrusJoist engineered wood products only. The substitution of other wood products with this layout is NOT PERMITTED. Please identify the TJI®, TimberStrand® LSL, Microllam® LVL and Parallam® PSL stamps on the product to ensure that this layout is valid for the products actually installed.
- Only header openings and roof loads which affect Weyerhaeuser product sizes have been denoted on this layout. In addition to and 'CS' detail callouts shown, solid blocking and/or squash blocks are required to provide vertical load transfer from all concentrated load locations to foundation below. See Pocket Framers Guide for appropriate detail(s).



Tag	Qty	Product	Len	Cut Logic
Floor Joist				
J1	20	2-5/16"x16" TJI® 360	24'	20x(1/23)
J1	12	2-5/16"x16" TJI® 360	14'	1x(2/7)
J1	2	2-5/16"x16" TJI® 360	12'	2x(1/12)
Beam				
M1	2	1-3/4"x16" Microllam® LVL	24'	2x(1/23)
M1	4	1-3/4"x16" Microllam® LVL	4'	4x(1/4)
Rim				
Rm1	5	1-1/8"x16" TJI® Rim Board	16'	5/16
Hanger				
H1	2	HU416 Simpson Strong Tie		
H2	4	US2.3/716 Simpson Strong Tie		



Start Framing Here
16" TJI 360 @ 16" O.C.

GENERAL NOTES:

- Joists may be shifted up to 3" from on center spacing to avoid hanger interference, flush beams and/or plumbing drops. **DO NOT CUT JOIST FLANGES.**
- All EWP beams have been designed assuming full width support of the members/piles, unless noted otherwise.
- This drawing may contain deviations from the original project documents. It is the responsibility of the contractor to notify the project Design Professional of these deviations to verify conformance with the original design intent of the project.

GENERAL NOTES:

- This layout is intended for the use of TrusJoist engineered wood products only. The substitution of other wood products with this layout is NOT PERMITTED. Please identify the TJI®, TimberStrand® LSL, Microllam® LVL and Parallam® PSL stamps on the product to ensure that this layout is valid for the products actually installed.
- Only header openings and roof loads which affect Weyerhaeuser product sizes have been denoted on this layout. In addition to and 'CS' detail callouts shown, solid blocking and/or squash blocks are required to provide vertical load transfer from all concentrated load locations to foundation below. See Pocket Framers Guide for appropriate detail(s).

These joist placement layouts have been prepared for the specification of TrusJoist products only. This service is solely intended for product application assurance, and is not intended to circumvent the need for a design professional as determined by the building codes. The designer of record and/or builder/framer is responsible to assure these drawings are compatible with the overall project.