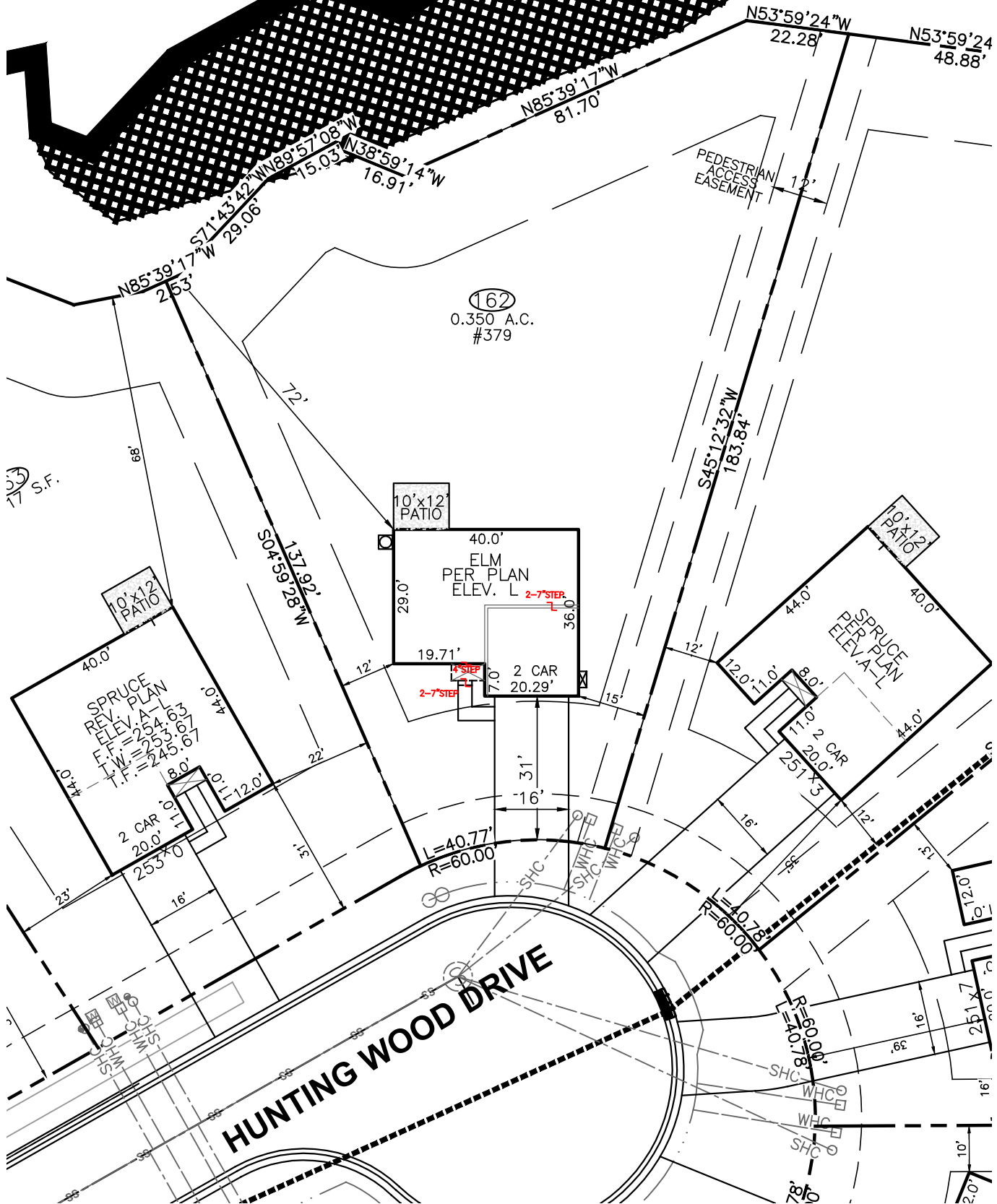


Wetlands HDPE



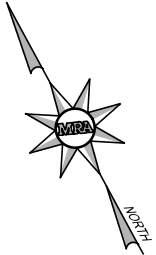
162
0.350 A.C.
#379

17 S.F.

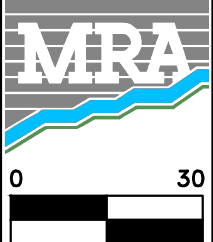
FRONT	30' MIN.
SIDE	10' MIN. (20' CORNER)
REAR	20' MIN.
IMPERVIOUS	1,987 S.F. (13%)

DRIVEWAY	700 SF
LEADWALK	38 SF
PUBLIC WALK	N/A SF
SOD	13,465 SF
WHC	43 LF
SHC	41 LF
PATIO	120 SF
HSE FACING	S. WEST

- LEGEND**
- ELEC. METER
 - A/C UNIT



BUILDER
RYAN HOMES
5734 TRINITY ROAD, SUITE 200
RALEIGH, NC 27607
PHONE: 919-233-0793



MORRIS & RITCHIE ASSOCIATES OF NC, PC
ENGINEERS, ARCHITECTS, PLANNERS, SURVEYORS AND LANDSCAPE ARCHITECTS
5605 CHAPEL HILL ROAD, SUITE 112
RALEIGH, NC 27607 PHONE:
984-200-2103
FIRM LICENSES C-4182 & G-492

www.mragta.com

SITE PLAN
FOR
QUAIL GLEN
PHASE 6
LOT 162 #379 HUNTING WOOD DRIVE
BLACK RIVER TOWNSHIP
HARNETT COUNTY NORTH CAROLINA

SCALE: 1"=30' DATE: FEBRUARY 22, 2022 DRAWN BY: JOE C. DESIGN BY: JOE C. REVIEW BY: DARYN A. JOB NO.: 20314