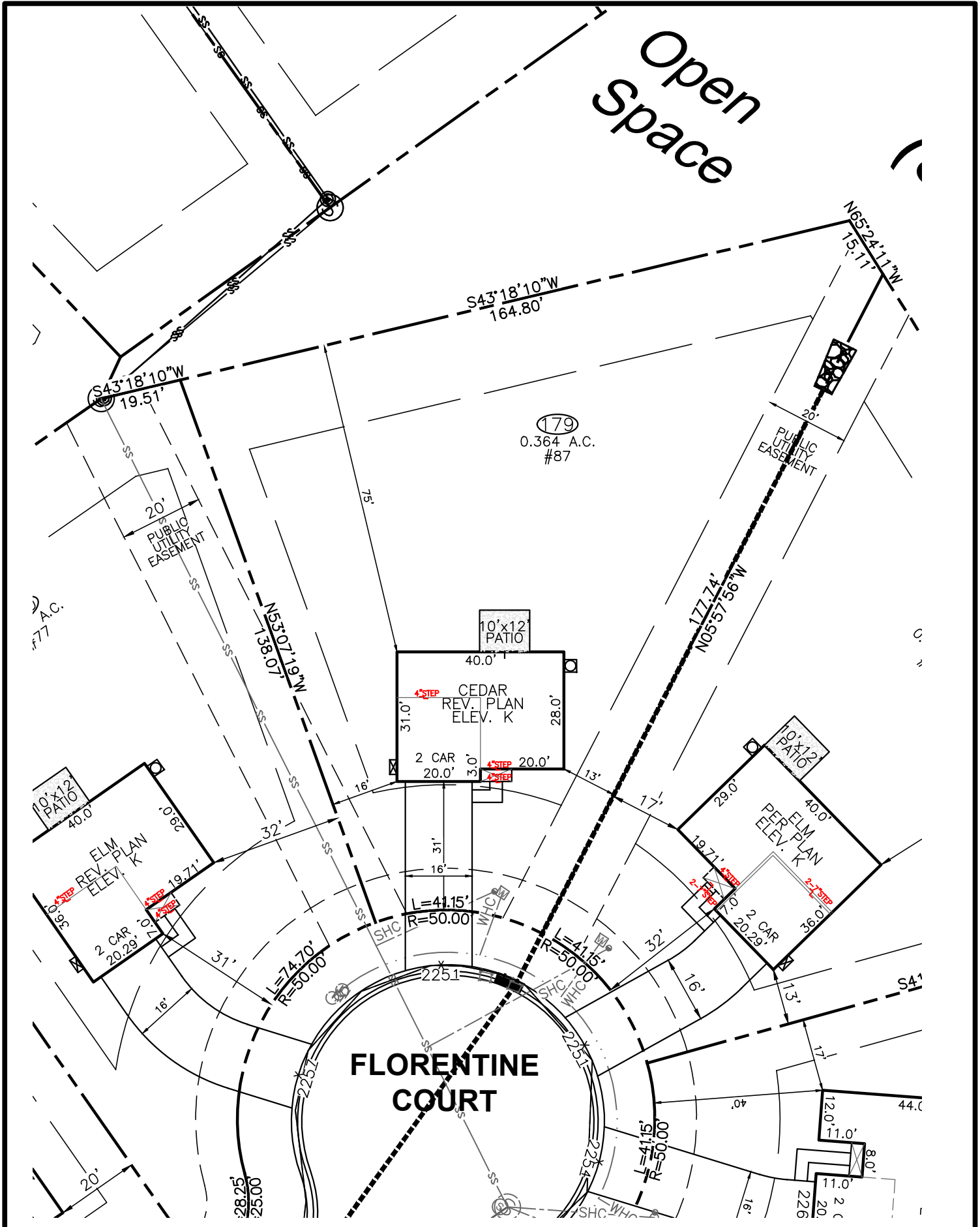


Open Space

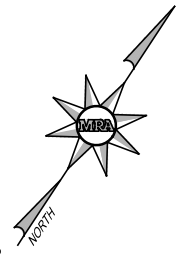


179
0.364 A.C.
#87

FLORENTINE COURT

LEGEND

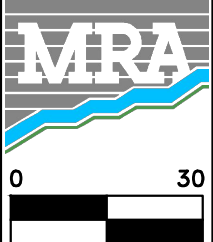
- ELEC. METER
- A/C UNIT



BUILDER
 RYAN HOMES
 5734 TRINITY ROAD, SUITE 200
 RALEIGH, NC 27607
 PHONE: 919-233-0793

RYAN HOMES-RLH AREA CALCULATIONS	
DRIVEWAY	708 SF
LEADWALK	28 SF
PUBLIC WALK	N/A SF
SOD	14,254 SF
WHC	30 LF
SHC	29 LF
PATIO	120 SF
HSE FACING	S. EAST

BUILDING SETBACK CHART	
FRONT	30' MIN.
SIDE	10' MIN. (20' CORNER)
REAR	20' MIN.
IMPERVIOUS	1,727 (11%)



MORRIS & RITCHE ASSOCIATES OF NC, PC
 ENGINEERS, ARCHITECTS, PLANNERS, SURVEYORS AND LANDSCAPE ARCHITECTS
 5605 CHAPEL HILL ROAD, SUITE 112
 RALEIGH, NC 27607 PHONE:
 984-200-2103
 FIRM LICENSES C-4182 & G-492
 www.mragta.com

SITE PLAN
 FOR
QUAIL GLEN
 PHASE 6
 LOT 179 #87 FLORENTINE COURT
 BLACK RIVER TOWNSHIP
 HARNETT COUNTY NORTH CAROLINA

SCALE: 1"=30' DATE: APRIL 8, 2022 DRAWN BY: JOE C. DESIGN BY: JOE C. REVIEW BY: DARYN A. JOB NO.: 20314