

General Notes:
 - Per ANSI/TPI 1-2002 all " Truss to Wall" connections are the responsibility of the Building Designer, not the Truss Manufacturer.

- Dimensions are Feet-Inches- Sixteenths.
- Trusses are to be 24" o.c. unless noted otherwise (U.N.O.)
- Trusses are not designed to support brick U.N.O.
- Do not cut or modify trusses without first contacting Builders FirstSource.
- Immediately contact Builders FirstSource if trusses are damaged.

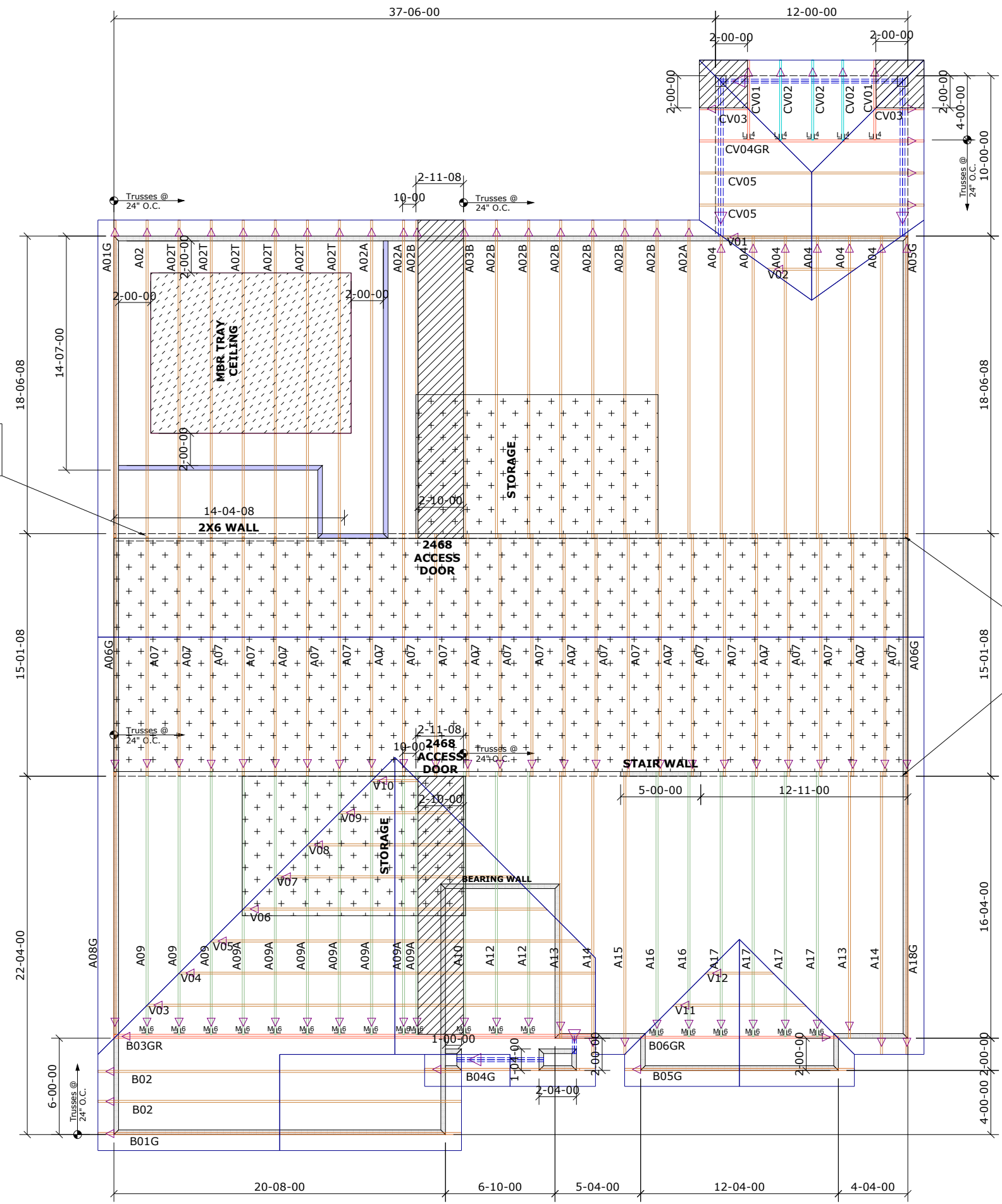
Connection Notes:
 - All hangers are to be Simpson or equivalent U.N.O.
 - Use Manufacturer's specifications for all hanger connections U.N.O.
 - Use 10d x 1 1/2" Nails in hanger connections to single ply roof girder trusses.

Floor Notes:
 - Shift truss as required to avoid plumbing traps.
 - Installation Contractor and/or Field Supervisor are to verify all dimensions, trap locations, and options prior to installation

Dimension Notes:
 - Drawing not to scale. Do not scale dimensions

ATTACH DOUBLE 2X6 TOP PLATE TO TOP OF END VERTICAL MEMBER OF TRUSSES (A01G-A02T)

ATTACH DOUBLE 2X4 TOP PLATE TO TOP OF END VERTICAL MEMBER OF TRUSSES (A02A-A05G) & (A08G-A18G)



Hanger List		All Tie Downs H2.5A Unless noted	
5	LUS24	U4	
19	HTU26	M16	
Special Items List			
Misc Material			
MATTAMY HOMES			
ALLEGHENY		Elev:	FRENCH COUNTRY
PROVIDENCE CREEK			
WAKE	NC	Lot:	77
Appwright #			

UPPER LEVEL OPT, MBR TRAY, SCREEN PORCH		Code:	IRC 2015
		Loading:	
		T.C.L.L.	20.0 lb/ft2
		T.C.D.L.	10.0 lb/ft2
Designed By:	MWA	B.C.L.L.	0.0 lb/ft2
Layout:	ALLEGHENY	B.C.D.L.	10.0 lb/ft2
L/O Date:	04/02/2022		
Revision History		Wind:	
Rev1:	xx/xx/xx	M.P.H.	115
Rev2:	xx/xx/xx	Exposure Category	
Rev3:	xx/xx/xx	B	
Pick Ticket:	---	Job No.:	---
Sales No.:	---	Acct No.:	---

Hatch Legend	
	Attic Room
	Volume Ceiling
	Stick Framing

