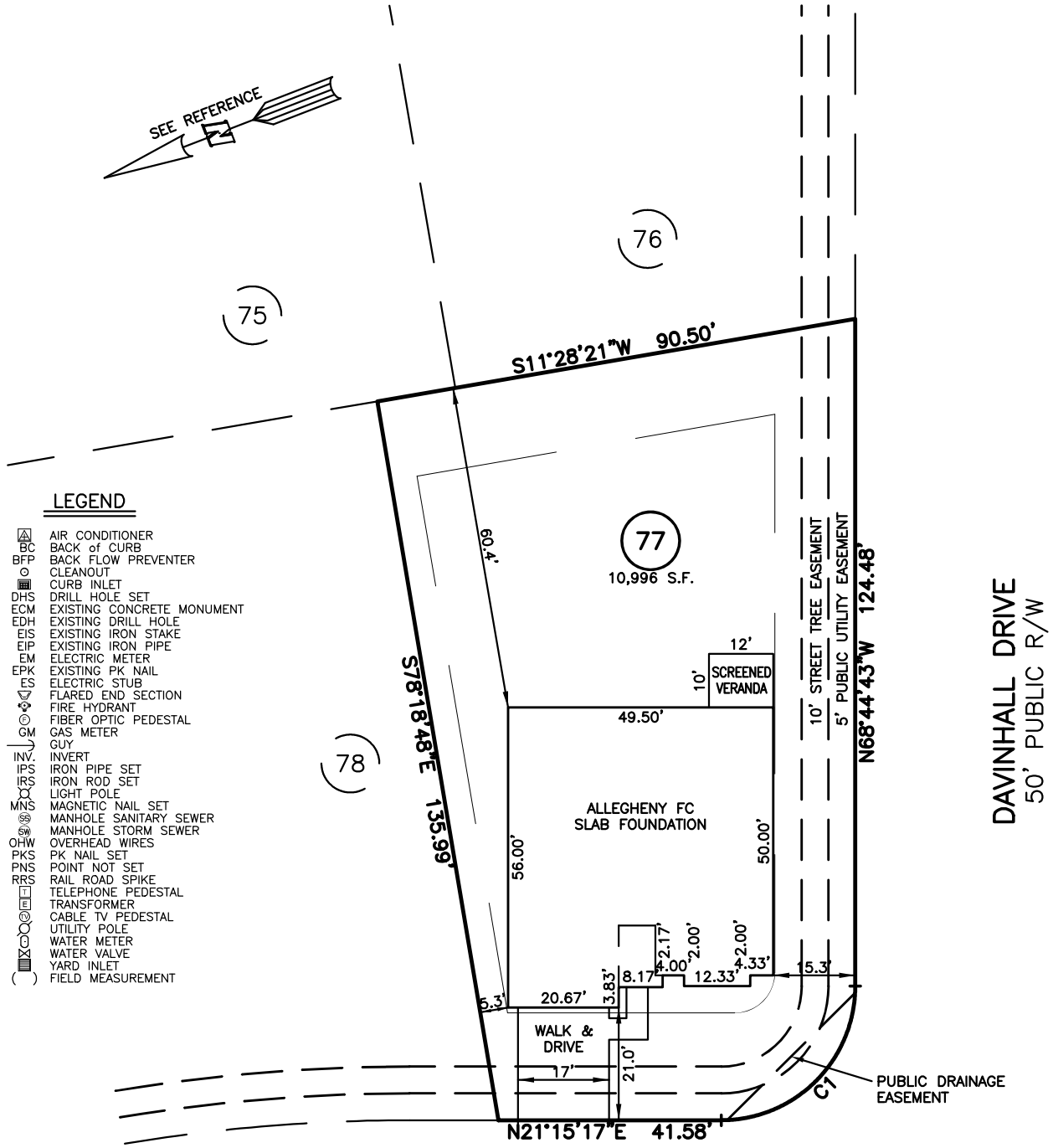
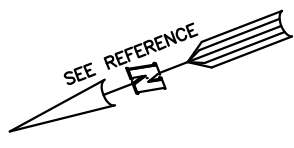


PLOT PLAN FOR  
**MATTAMY HOMES**  
 HARTFORD LANE  
 LOT 77, PROVIDENCE CREEK PHASE 2  
 HECTORS CREEK AND BLACK CREEK TOWNSHIP, HARNETT COUNTY, NORTH CAROLINA



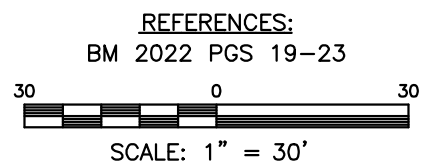
**LEGEND**

- △ AIR CONDITIONER
- BC BACK OF CURB
- BFP BACK FLOW PREVENTER
- CLEANOUT
- CURB INLET
- DHS DRILL HOLE SET
- ECM EXISTING CONCRETE MONUMENT
- EDH EXISTING DRILL HOLE
- EIS EXISTING IRON STAKE
- EIP EXISTING IRON PIPE
- EM ELECTRIC METER
- EPK EXISTING PK NAIL
- ES ELECTRIC STUB
- FLARED END SECTION
- FIRE HYDRANT
- FIBER OPTIC PEDESTAL
- GAS METER
- GM
- INVERT
- IRPS IRON PIPE SET
- IRRS IRON ROD SET
- LIGHT POLE
- MNS MAGNETIC NAIL SET
- MANHOLE SANITARY SEWER
- MANHOLE STORM SEWER
- OHV OVERHEAD WIRES
- PKS PK NAIL SET
- PNS POINT NOT SET
- RRS RAIL ROAD SPIKE
- TELEPHONE PEDESTAL
- TRANSFORMER
- CABLE TV PEDESTAL
- UTILITY POLE
- WATER METER
- WATER VALVE
- YARD INLET
- ( ) FIELD MEASUREMENT

CURVE	RADIUS	ARC LENGTH	CHORD LENGTH	CHORD BEARING	DELTA ANGLE
C1	25.00'	39.27'	35.36'	N23°44'43\"W	90°00'00\"

**SETBACK INFO**

FRONT:	20'
REAR:	15'
SIDES:	5'
CORNER SIDE:	15'



- NOTES**
1. THIS SURVEY SUBJECT TO ANY FACTS THAT MAY BE DISCLOSED BY A FULL AND ACCURATE TITLE SEARCH.
  2. THIS MAP MAY NOT BE A CERTIFIED SURVEY AND HAS NOT BEEN REVIEWED BY A LOCAL GOVERNMENT AGENCY FOR COMPLIANCE WITH ANY APPLICABLE LAND DEVELOPMENT REGULATIONS AND HAS NOT BEEN REVIEWED FOR COMPLIANCE WITH RECORDING REQUIREMENTS FOR PLATS.

PLOT PLAN  
 PRELIMINARY PLAT- NOT FOR RECORDATION,  
 CONVEYANCE OR SALES

DATE: MARCH 31, 2022

REV CODE: 1.FLIP, 2.PLAN, 3.ROTATE, 4.MOVE, 5.SS  
 6.SEVERAL OF ABOVE, 7.LAND FEATURE, 8. OTHER

F.B. \_\_\_\_\_

**RWK, PA**  
 engineering ~ surveying  
 Corporate License: C-1771  
 101 W. Main St., Suite 202  
 Garner, NC 27529  
 Phone (919) 779-4854  
 Fax (919) 779-4056