



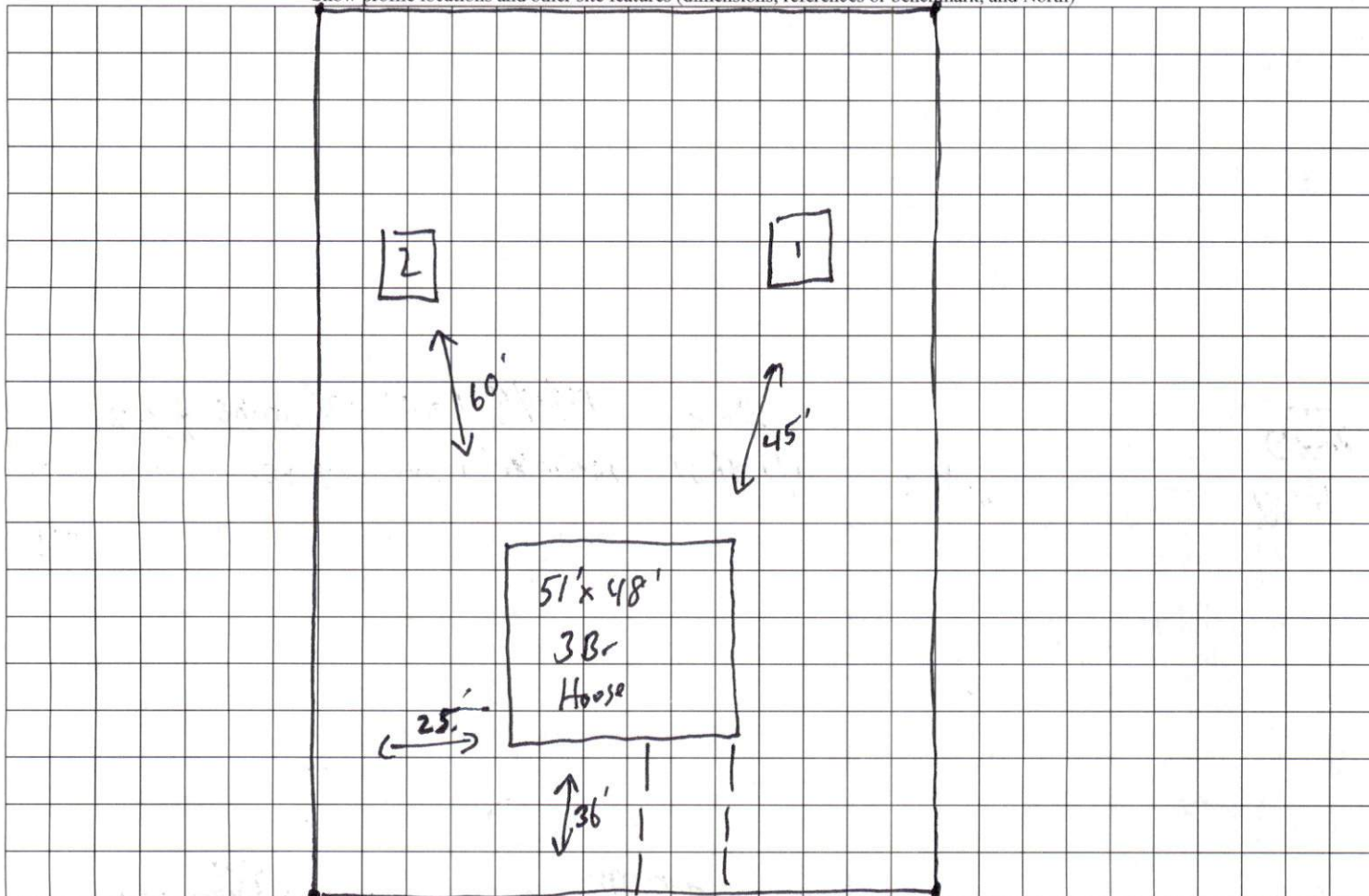
COMMENTS: \_\_\_\_\_

LANDSCAPE POSITIONS	GROUP	TEXTURES	.1955 LTAR	CONSISTENCE MOIST	WET
R-RIDGE	I	S-SAND	1.2 - 0.8	VFR-VERY FRIABLE	NS-NON-STICKY
S-SHOULDER SLOPE		LS-LOAMY SAND			
L-LINEAR SLOPE	II	SL-SANDY LOAM	0.8 - 0.6	FI-FIRM	SS-SLIGHTLY STICKY
FS-FOOT SLOPE		L-LOAM			
N-NOSE SLOPE	III	SI-SILT	0.6 - 0.3	VFI-VERY FIRM	S-STICKY
H-HEAD SLOPE		SIL-SILT LOAM			
CC-CONCLAVE SLOPE	IV	CL-CLAY LOAM	0.4 - 0.1	EFI-EXTREMELY FIRM	VS-VERY STICKY
CV-CONVEX SLOPE		SCL-SANDY CLAY LOAM			
T-TERRACE		SIC-SILTY CLAY			
FP-FLOOD PLAN		C-CLAY			NP-NON-PLASTIC
		SC-SANDY CLAY			SP-SLIGHTLY STICKY
					P-PLASTIC
					VP-VERY PLASTIC

STRUCTURE  
 SG-SINGLE GRAIN  
 M- MASSIVE  
 CR-CRUMB  
 GR-GRANULAR  
 SBK-SUBANGULAR BLOCKY  
 ABK-ANGULAR BLOCKY  
 PL-PLATY  
 PR-PRISMATIC

MINERALOGY  
 SLIGHTLY EXPANSIVE  
 EXPANSIVE

Show profile locations and other site features (dimensions, references or benchmark, and North)



← Rolling Pasture way →