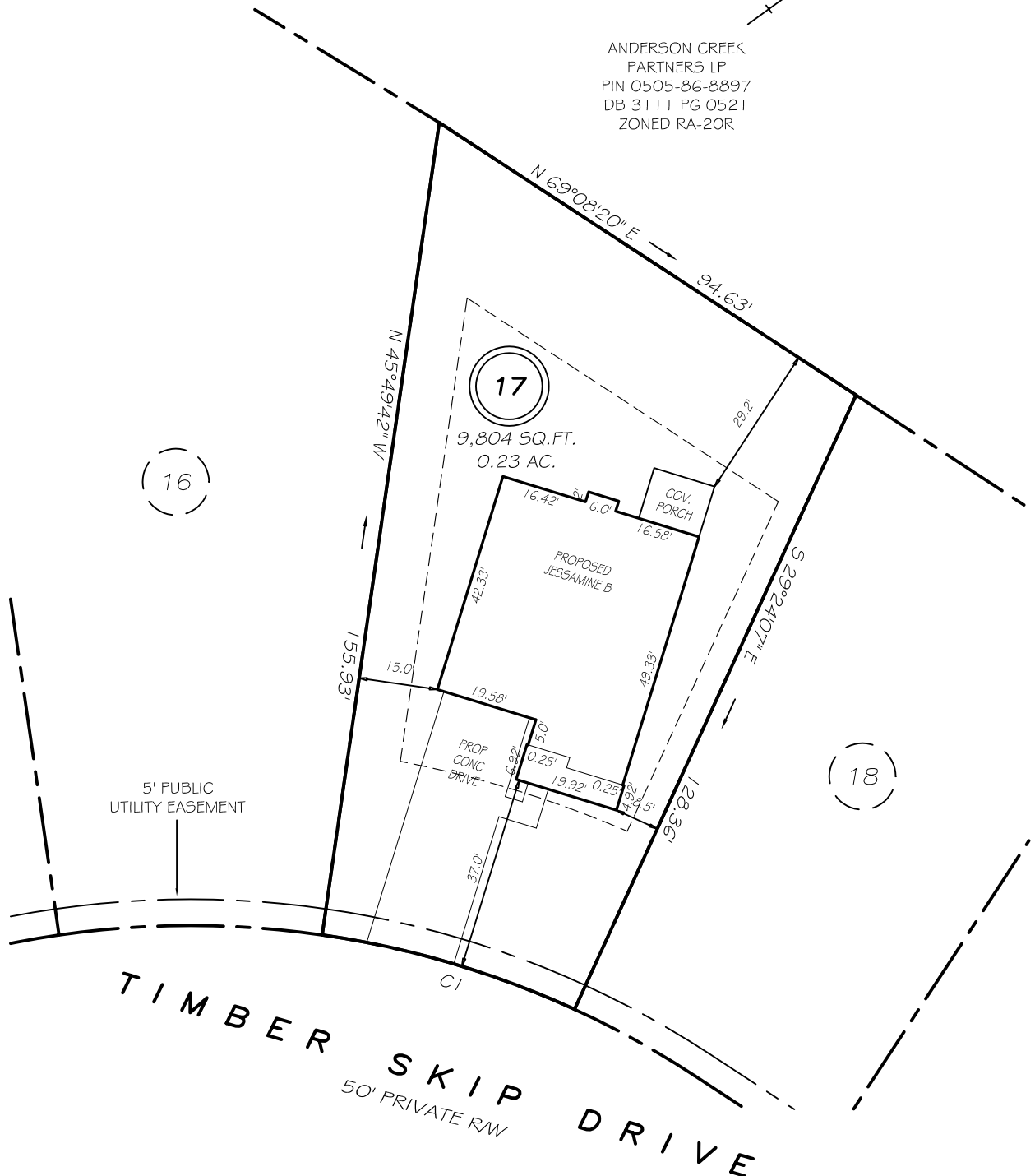


I, MICHAEL P. GRIFFIN, certify that under my direction and supervision this map was drawn from an actual field survey; that the error of closure of the survey as calculated by coordinates is 1: 10,000+; that the area shown hereon was calculated by coordinates.

Witness my hand and seal this day of MONTH 2022.

BK 2022 PGS 132-133
HARNETT CO. REGISTRY

ANDERSON CREEK PARTNERS LP
PIN 0505-86-8897
DB 3111 PG 0521
ZONED RA-20R



(16)

(17)

(18)

5' PUBLIC UTILITY EASEMENT

TIMBER SKIP DRIVE
50' PRIVATE RW

SETBACKS

FRONT	35'
REAR	25'
SIDE	5'
OTHER SIDE	10'

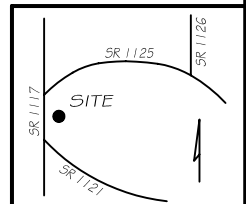
REVISION: LEFT HAND 4/21/22

CI R=175.00' L=50.17' S52°23'06" W 50.00'

PRELIMINARY
NOT FOR RECORDATION,
SALES OR CONVEYANCE

LEGEND

EIP	EXISTING IRON PIPE	FES	FLARED END SECTION
IPS	IRON PIPE SET	WM	WATER METER
R/W	RIGHT OF WAY	CO	CLEAN OUT
N/F	NOW OR FORMERLY	FH	FIRE HYDRANT
EIS	EXISTING IRON STAKE	CB	CATCH BASIN



GRIFFIN LAND SURVEYING, INC.
P. O. BOX 148
FUQUAY-VARINA, NC 27526
(919) - 567 - 1963

PLOT PLAN
FOR
H & H HOMES
ANDERSON CREEK CLUB
LOT 17
TIMBER SKIP DRIVE
NORTH CAROLINA
HARNETT COUNTY ANDERSON CREEK TOWNSHIP

DRAWN BY NMF

DATE 4/13/22

CHECKED BY MPG

SCALE 1" = 30'