



Ground Truth Soil Consulting, PLLC

Prince Place Subdivision

Lot 31

**Four-bedroom
Septic Layout**

Harnett County

Scale:

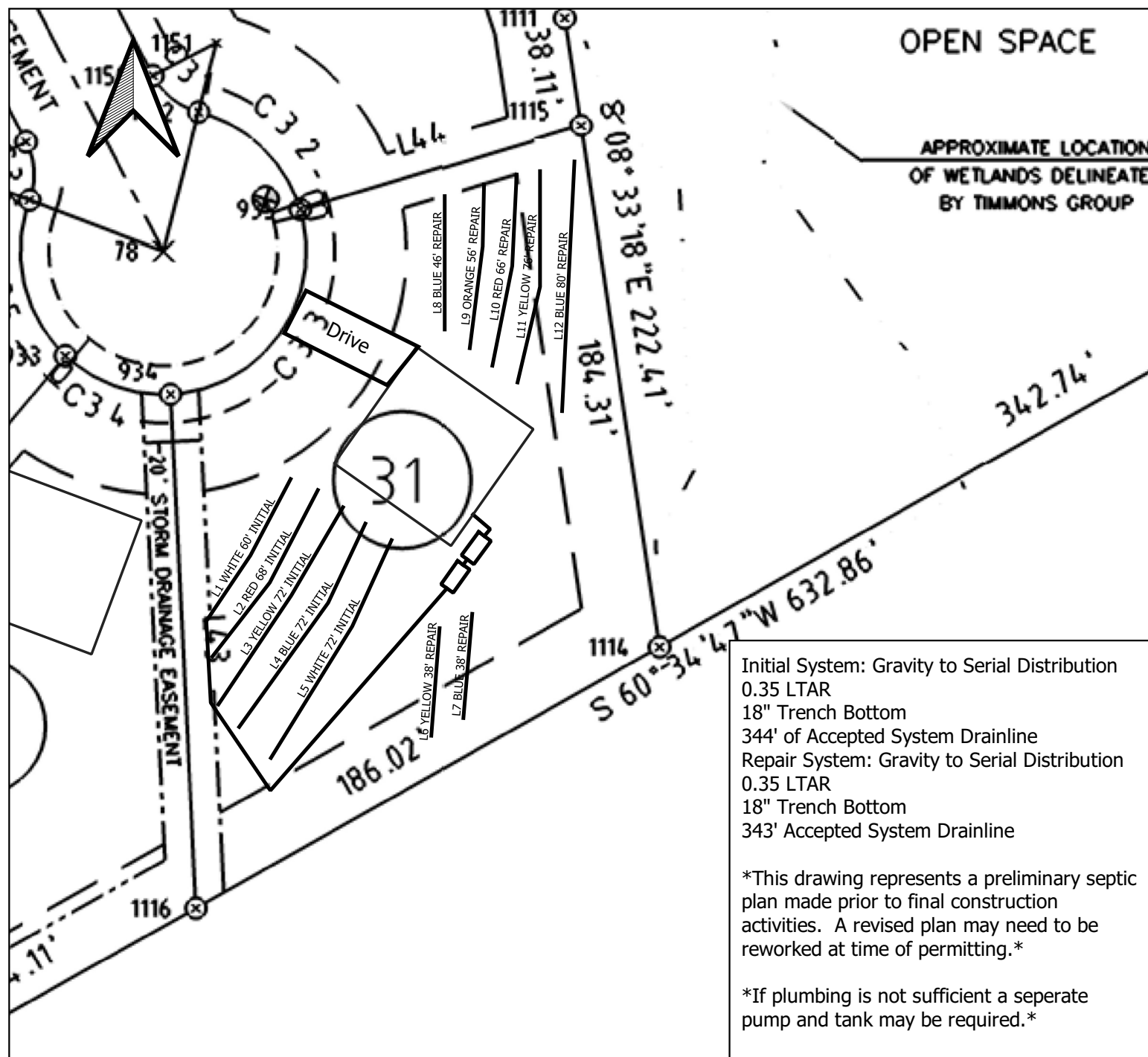
0 25 50 ft

Figure

1

Date:
May 2021

GT Job
No.
21-124



Initial System: Gravity to Serial Distribution
 0.35 LTAR
 18" Trench Bottom
 344' of Accepted System Drainline
 Repair System: Gravity to Serial Distribution
 0.35 LTAR
 18" Trench Bottom
 343' Accepted System Drainline

This drawing represents a preliminary septic plan made prior to final construction activities. A revised plan may need to be reworked at time of permitting.

If plumbing is not sufficient a separate pump and tank may be required.