

CONTRACTOR INFORMATION

Edward GAINER

PROJECT LOCATION:

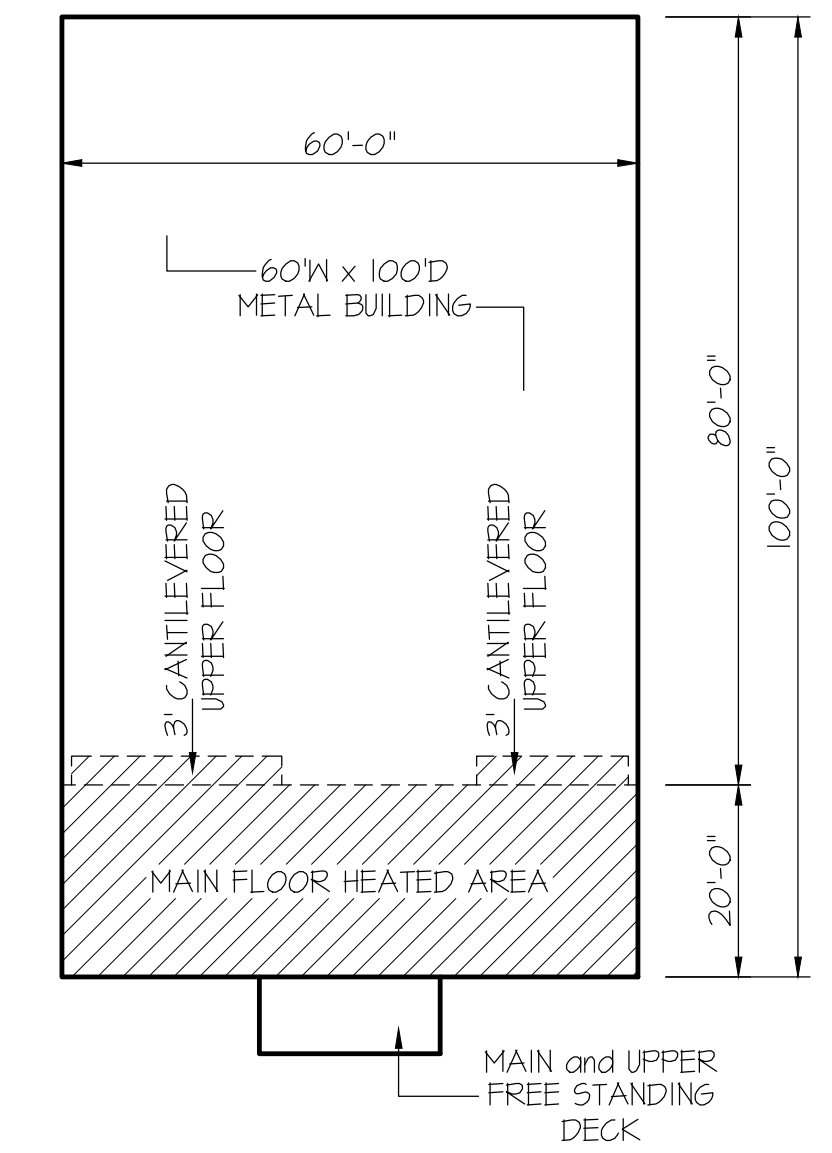
PROJECT NAME:

SCALE: 1/4" = 1'-0"
NOTE: IF THIS DRAWING IS NOT PLOTTED ON 24" x 36", IT HAS BEEN REVERSED FROM ITS ORIGINAL SIZE. SCALE IS NO LONGER APPLICABLE.

SHEET TITLE:
UPPER FLOOR

SHEET NO.
A-3

COUNTY	MPH
MONTGOMERY	115
MOORE	115
STANLY	115
RANDOLPH	115

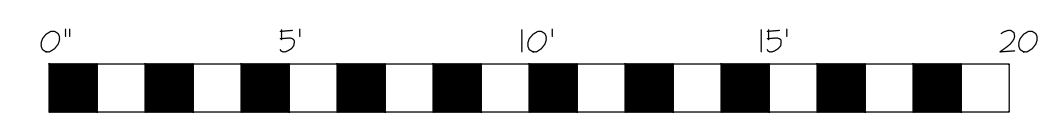


CLIMATE ZONE	ZONE-3	ZONE-4
FENESTRATION U-FACTOR	0.35	0.35
GLAZED FENESTRATION SHGC	0.30	0.30
MINIMUM CEILING R-VALUE	R-30	R-30
MINIMUM WALL R-VALUE	R-15, 19-2.5	R-15, 19-2.5
MINIMUM FLOOR R-VALUE	R-19	R-19
MIN. CRAWL SPACE WALL R-VALUE	5/3	10/5
MIN. SLAB R-VALUE	0	R-10

PROVIDE STEPS AS REQUIRED
GRADE MAY VARY - BUILDER TO VERIFY

ALL EXTERIOR WALLS TO BE SHEATHED WITH CS-WSP (1/16" OSB) IN ACCORDANCE WITH SECTION R602.10.3 UNLESS OTHERWISE NOTED.

8' CEILINGS UNLESS OTHERWISE NOTED
UPPER FLOOR PLAN
SCALE: 1/4" = 1'-0"



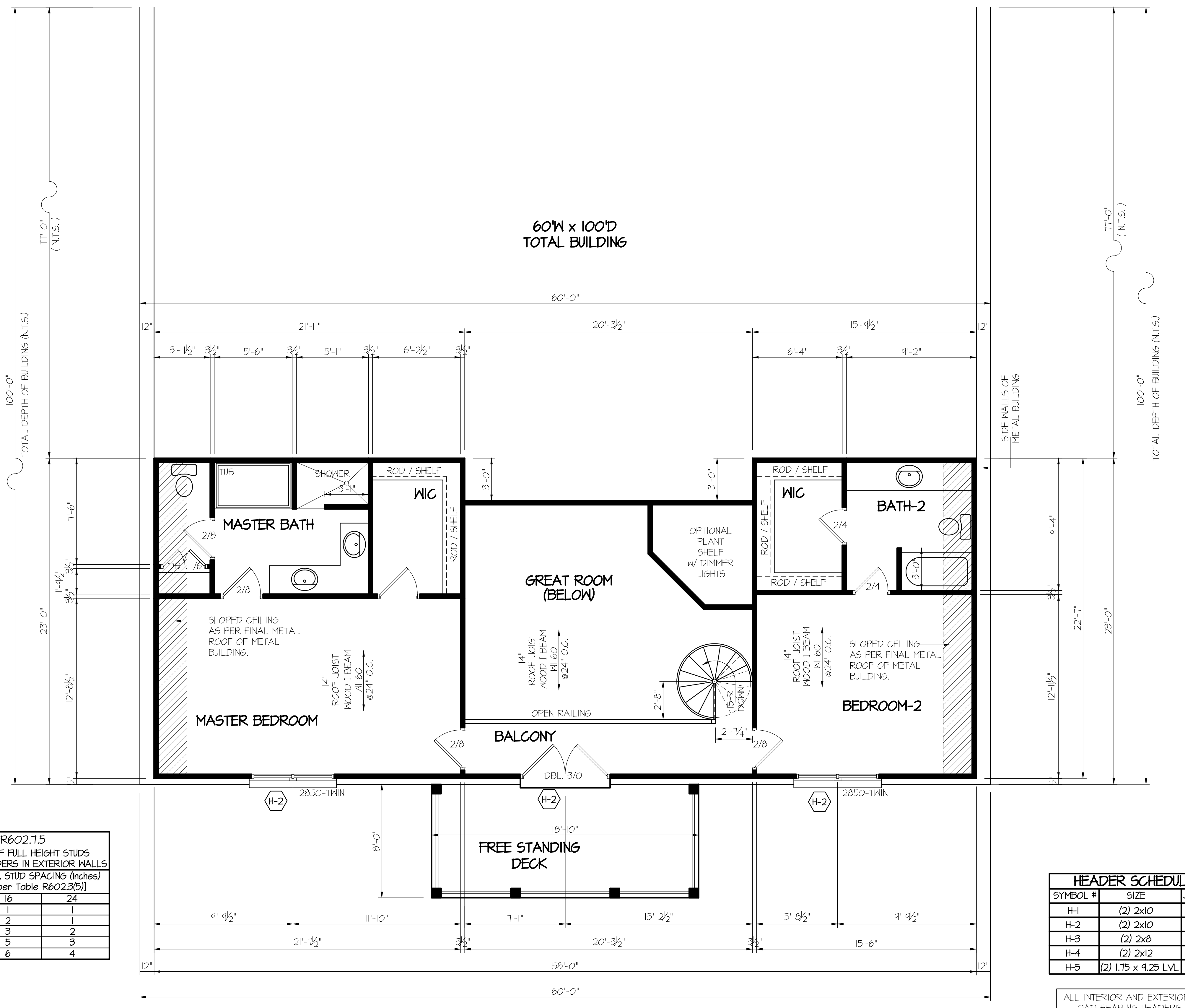
MAIN LEVEL - FRAME-HEATED AREA =	1136 S.F.
UPPER LEVEL - FRAME-HEATED AREA =	443 S.F.
TOTAL - FRAME-HEATED AREA =	2079 S.F.
COVERED WOOD DECK AREA =	151 S.F.
UPPER WOOD DECK AREA =	151 S.F.

SECTION R401-COLUMNS
THE COLUMNS SHALL BE RESTRAINED TO PREVENT LATERAL DISPLACEMENT AT THE TOP AND BOTTOM END. WOOD COLUMNS SHALL BE NOT LESS IN NOMINAL SIZE THAN 4 INCHES BY 4 INCHES (102 mm by 102 mm). STEEL COLUMNS SHALL BE NOT LESS THAN 3-INCH-DIAMETER (76 mm) SCHEDULE 40 PIPE MANUFACTURED IN ACCORDANCE WITH ASTM A53 GRADE B OR APPROVED EQUIVALENT.

SYMBOL #	SIZE	JACKS
H-1	(2) 2x10	1
H-2	(2) 2x10	2
H-3	(2) 2x8	2
H-4	(2) 2x12	2
H-5	(2) 1.75 x 9.25 LVL	3

ALL INTERIOR AND EXTERIOR LOAD BEARING HEADERS WILL BE 2x10 #2 SPF UNLESS OTHERWISE NOTED.

HEADER SPAN (feet)	MAX. STUD SPACING (inches) [per Table R602.3(5)]	
	16	24
< 3'	1	1
4'	2	1
8'	3	2
12'	5	3
16'	6	4



A-3