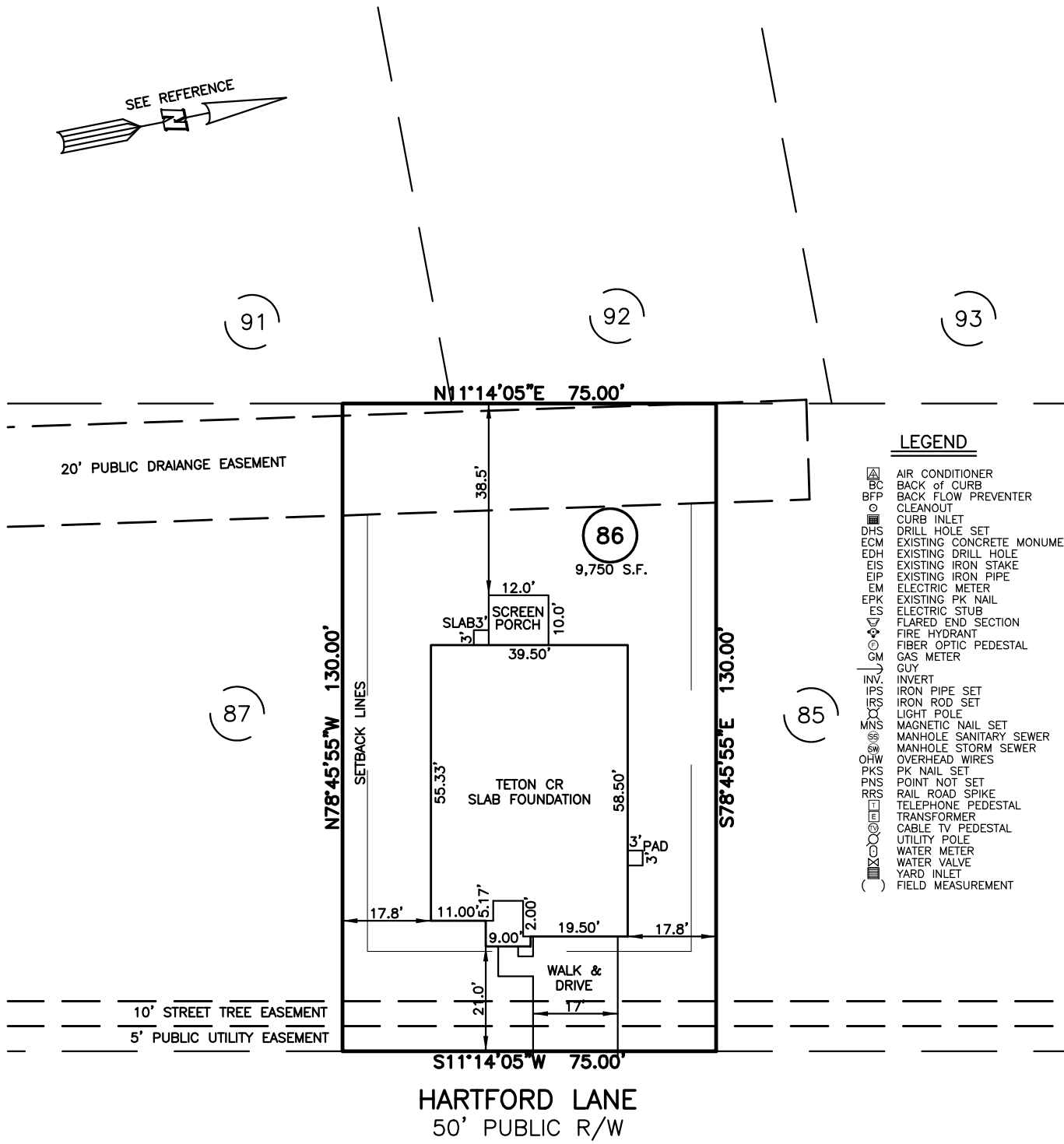
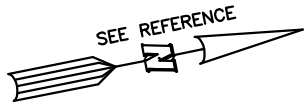


PLOT PLAN FOR  
**MATTAMY HOMES**  
 44 HARFORD LANE  
 LOT 86, PROVIDENCE CREEK PHASE 2  
 HECTORS CREEK AND BLACK CREEK TOWNSHIP, HARNETT COUNTY, NORTH CAROLINA



**LEGEND**

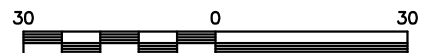
- △ AIR CONDITIONER
- BC BACK OF CURB
- BFP BACK FLOW PREVENTER
- CLEANOUT
- ◻ CURB INLET
- DHS DRILL HOLE SET
- ECM EXISTING CONCRETE MONUMENT
- EDH EXISTING DRILL HOLE
- EIS EXISTING IRON STAKE
- EIP EXISTING IRON PIPE
- EM ELECTRIC METER
- EPK EXISTING PK NAIL
- ES ELECTRIC STUB
- FLR FLARED END SECTION
- FH FIRE HYDRANT
- FOP FIBER OPTIC PEDESTAL
- GM GAS METER
- GUY GUY
- INV. INVERT
- IPS IRON PIPE SET
- IRS IRON ROD SET
- LP LIGHT POLE
- MNS MAGNETIC NAIL SET
- MS MANHOLE SANITARY SEWER
- MSW MANHOLE STORM SEWER
- OHV OVERHEAD WIRES
- PKS PK NAIL SET
- PNS POINT NOT SET
- RRS RAIL ROAD SPIKE
- TEP TELEPHONE PEDESTAL
- TRF TRANSFORMER
- CTV CABLE TV PEDESTAL
- UP UTILITY POLE
- WM WATER METER
- WV WATER VALVE
- YI YARD INLET
- ( ) FIELD MEASUREMENT

**SETBACK INFO**

FRONT:	_____	20'
REAR:	_____	15'
SIDES:	_____	5'
CORNER SIDE:	_____	15'

**REFERENCES:**

BM 2022 PGS 19-23



SCALE: 1" = 30'

**NOTES**

1. THIS SURVEY SUBJECT TO ANY FACTS THAT MAY BE DISCLOSED BY A FULL AND ACCURATE TITLE SEARCH.
2. THIS MAP MAY NOT BE A CERTIFIED SURVEY AND HAS NOT BEEN REVIEWED BY A LOCAL GOVERNMENT AGENCY FOR COMPLIANCE WITH ANY APPLICABLE LAND DEVELOPMENT REGULATIONS AND HAS NOT BEEN REVIEWED FOR COMPLIANCE WITH RECORDING REQUIREMENTS FOR PLATS.

PLOT PLAN  
 PRELIMINARY PLAT- NOT FOR RECORDATION,  
 CONVEYANCE OR SALES

REV CODE: 1.FLIP, 2.PLAN, 3.ROTATE, 4.MOVE, 5.SS  
 6.SEVERAL OF ABOVE, 7.LAND FEATURE, 8. OTHER

DATE: MARCH 17, 2022

F.B. \_\_\_\_\_

RWK, PA

engineering ~ surveying

Corporate License: C-1771

101 W. Main St., Suite 202

Garner, NC 27529

Phone (919) 779-4854

Fax (919) 779-4056