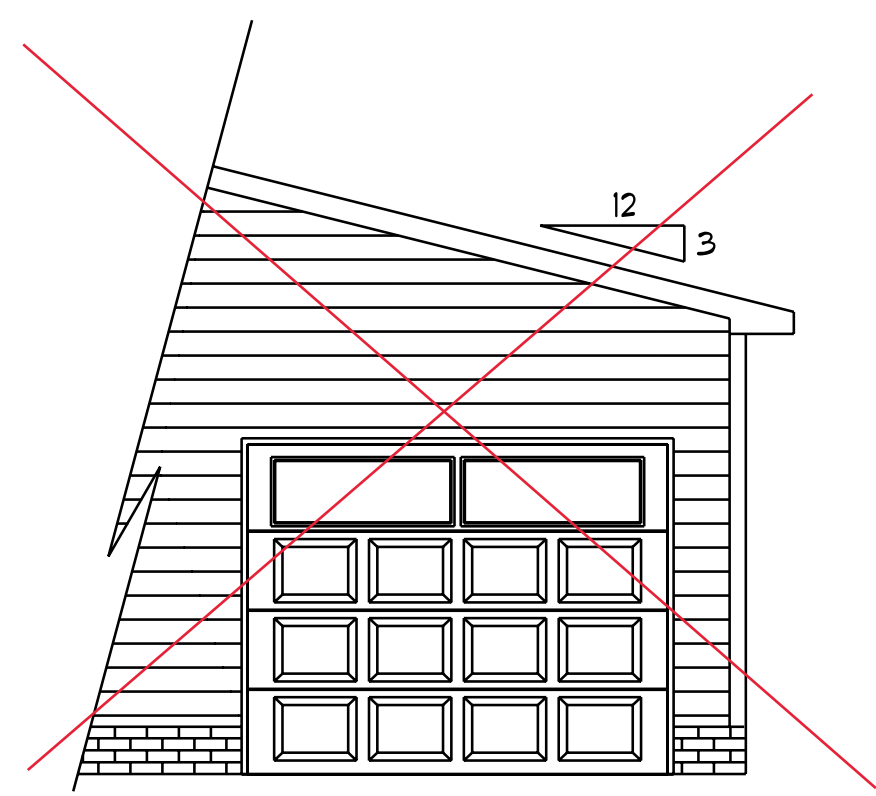
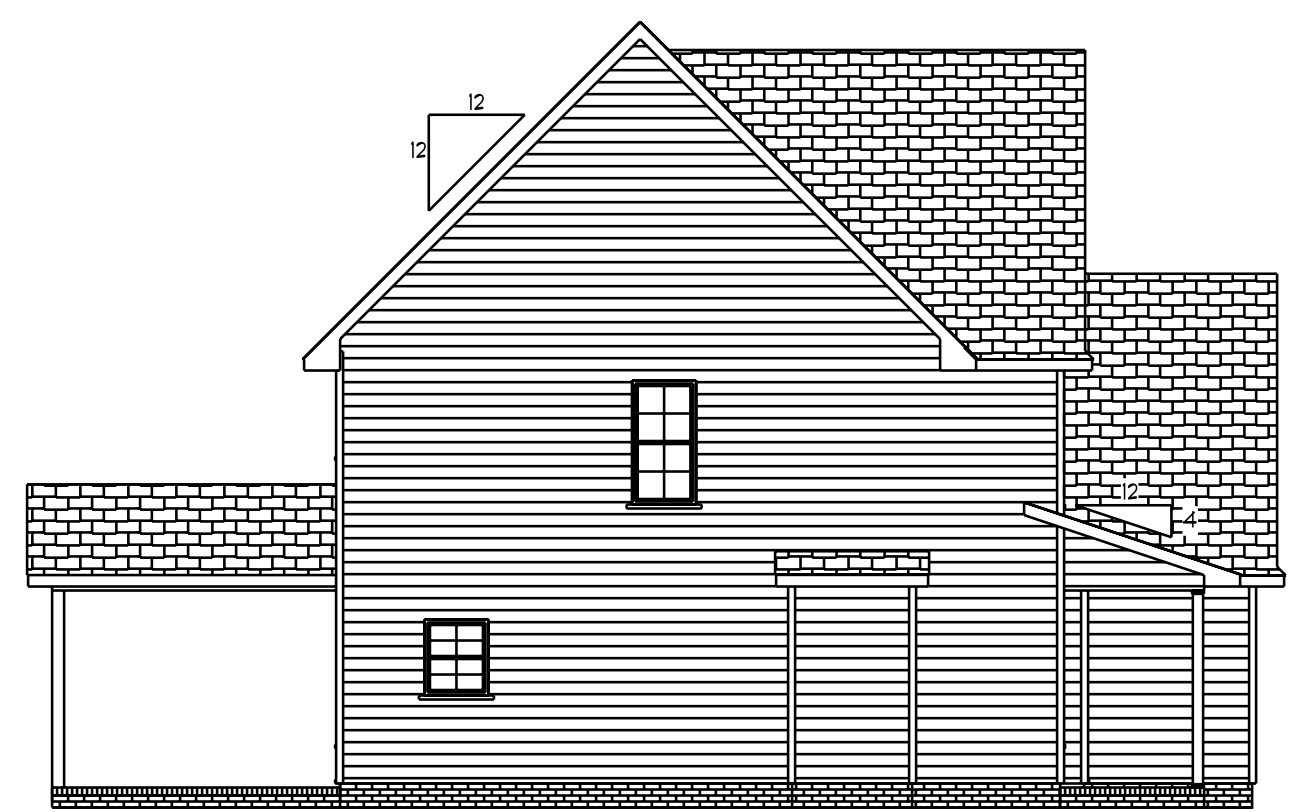




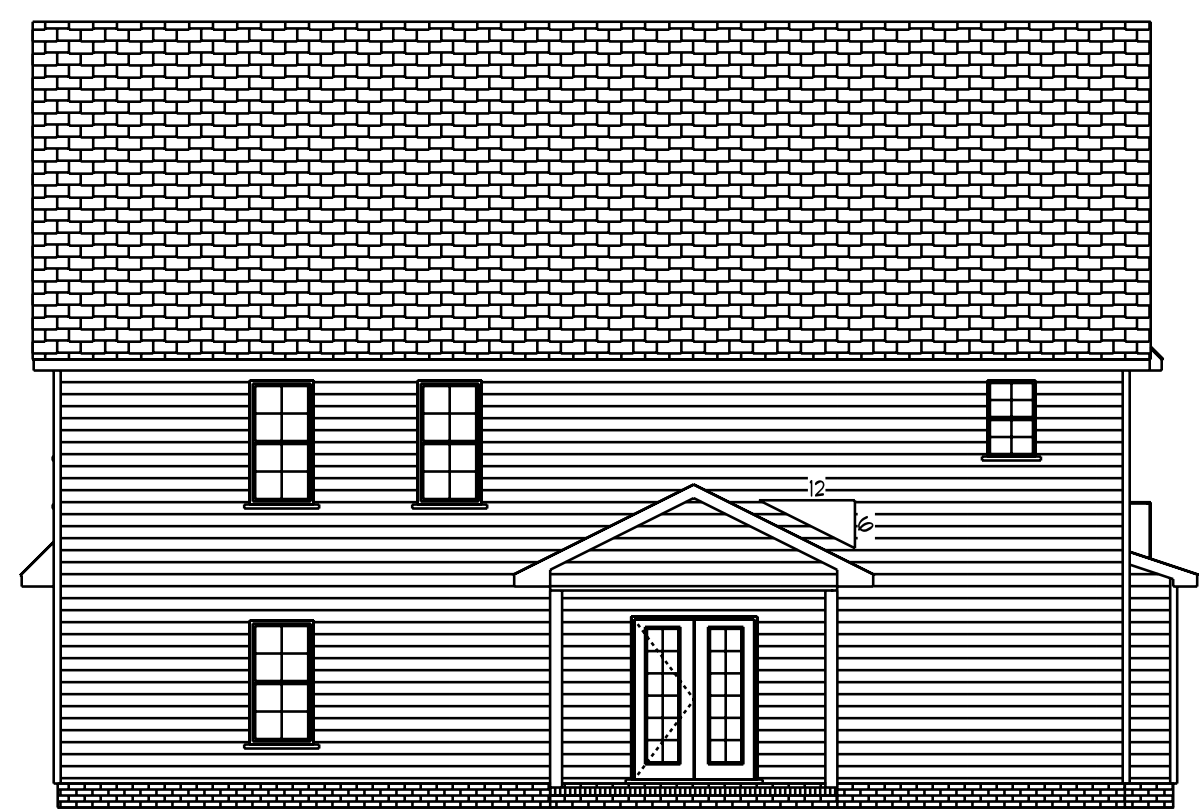
Front Elevation
Scale: 1/4" = 1'0"



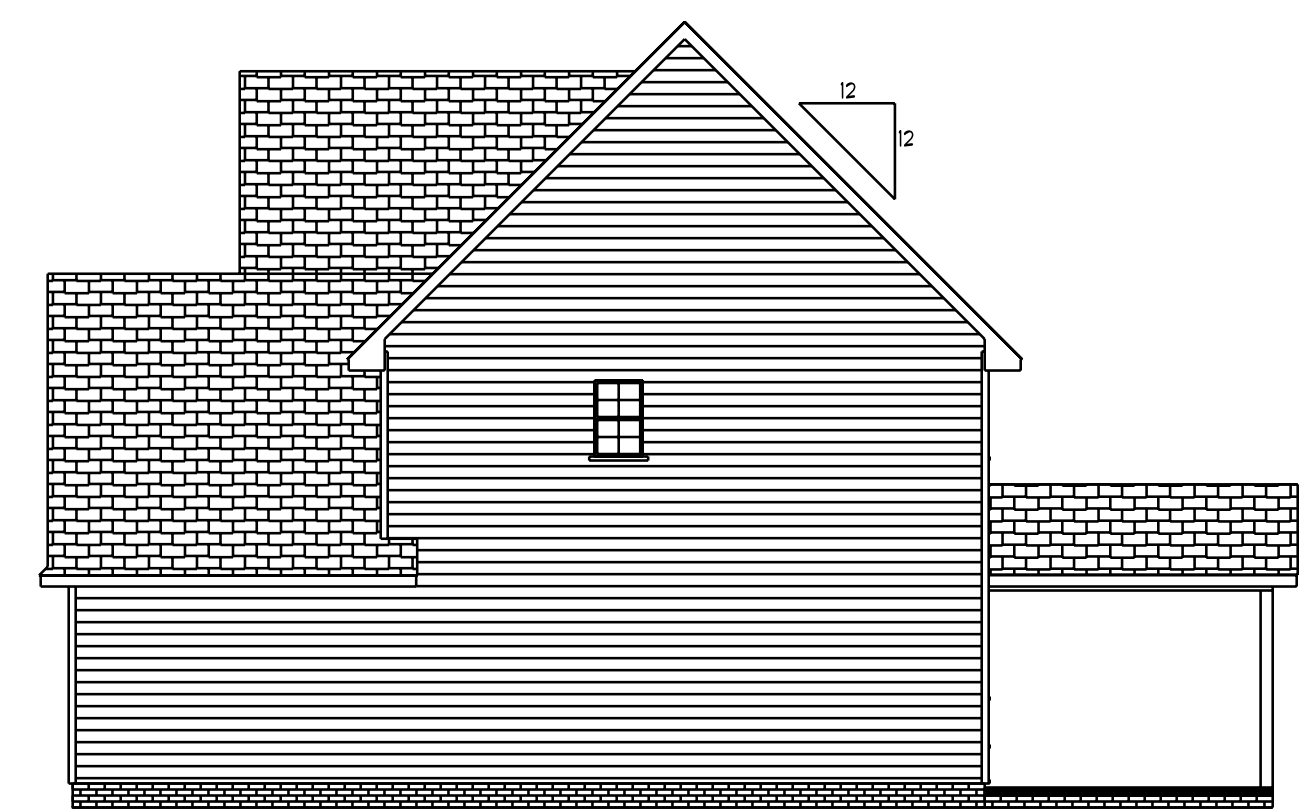
Optional
3rd Garage



Left Elevation
Scale: 1/8" = 1'0"



Rear Elevation
Scale: 1/8" = 1'0"



Right Elevation
Scale: 1/8" = 1'0"

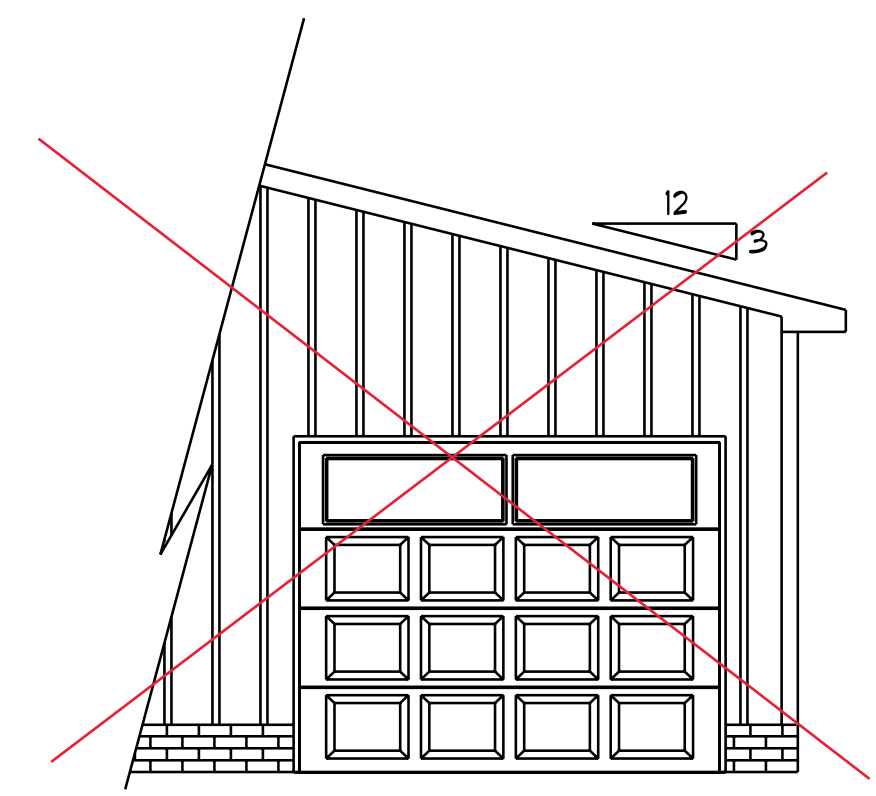
DATE: 1/15/2021
REVISED
DRAWING#

SCALE: 1/4"
DRAWN BY
APPROVED

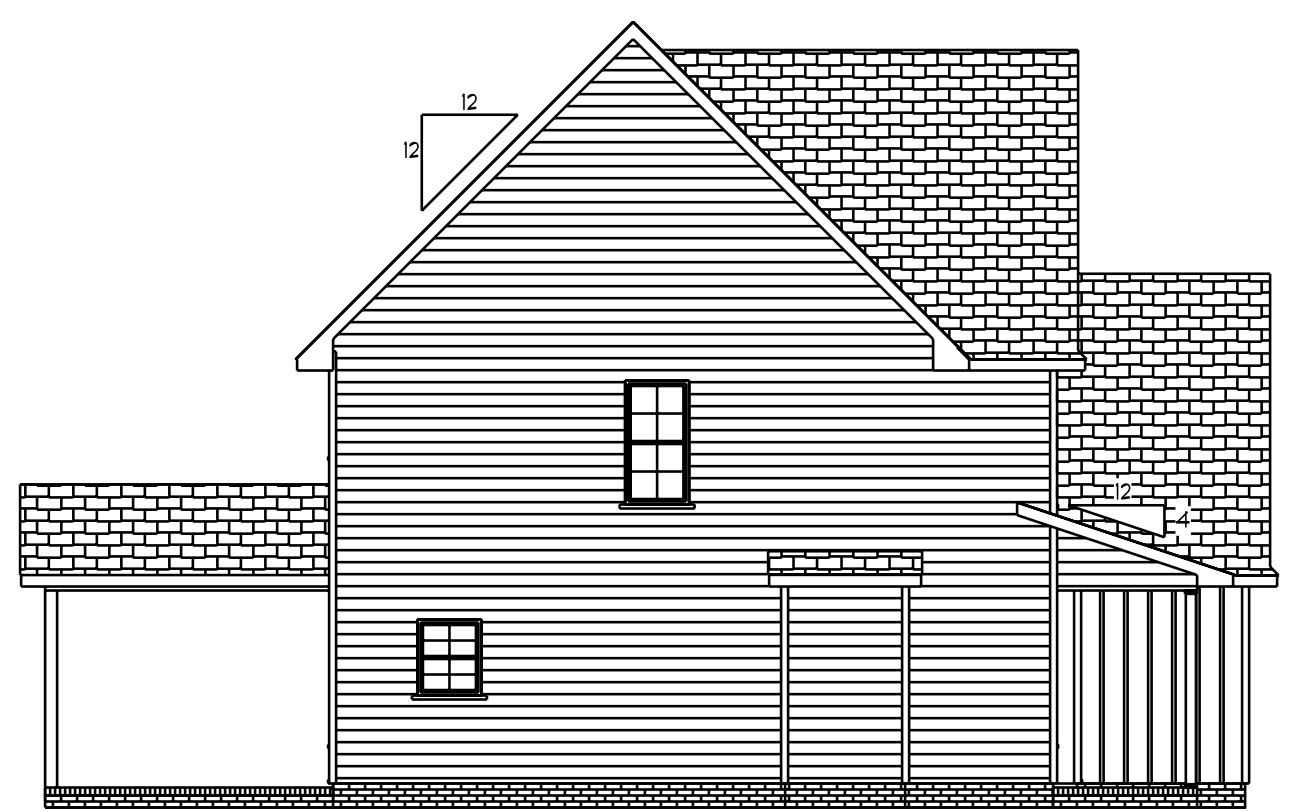
The Ashville



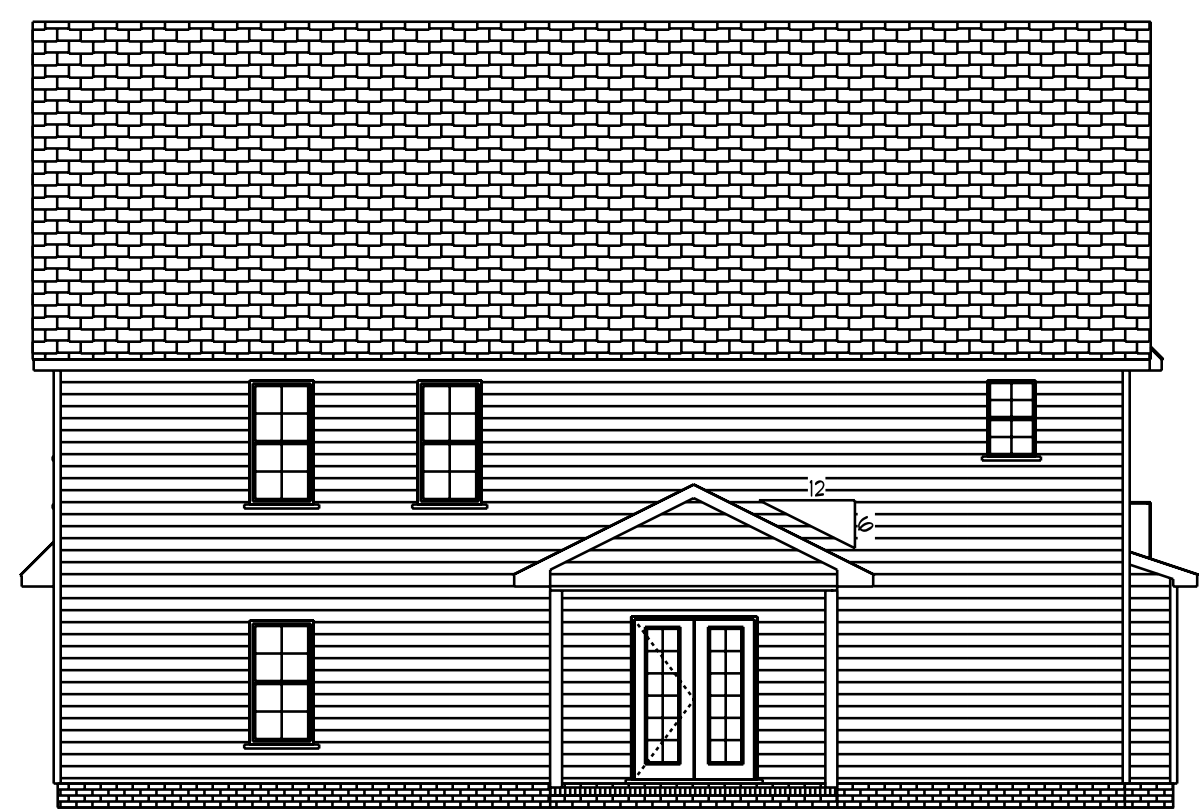
Front Elevation
Scale: 1/4" = 1'0"



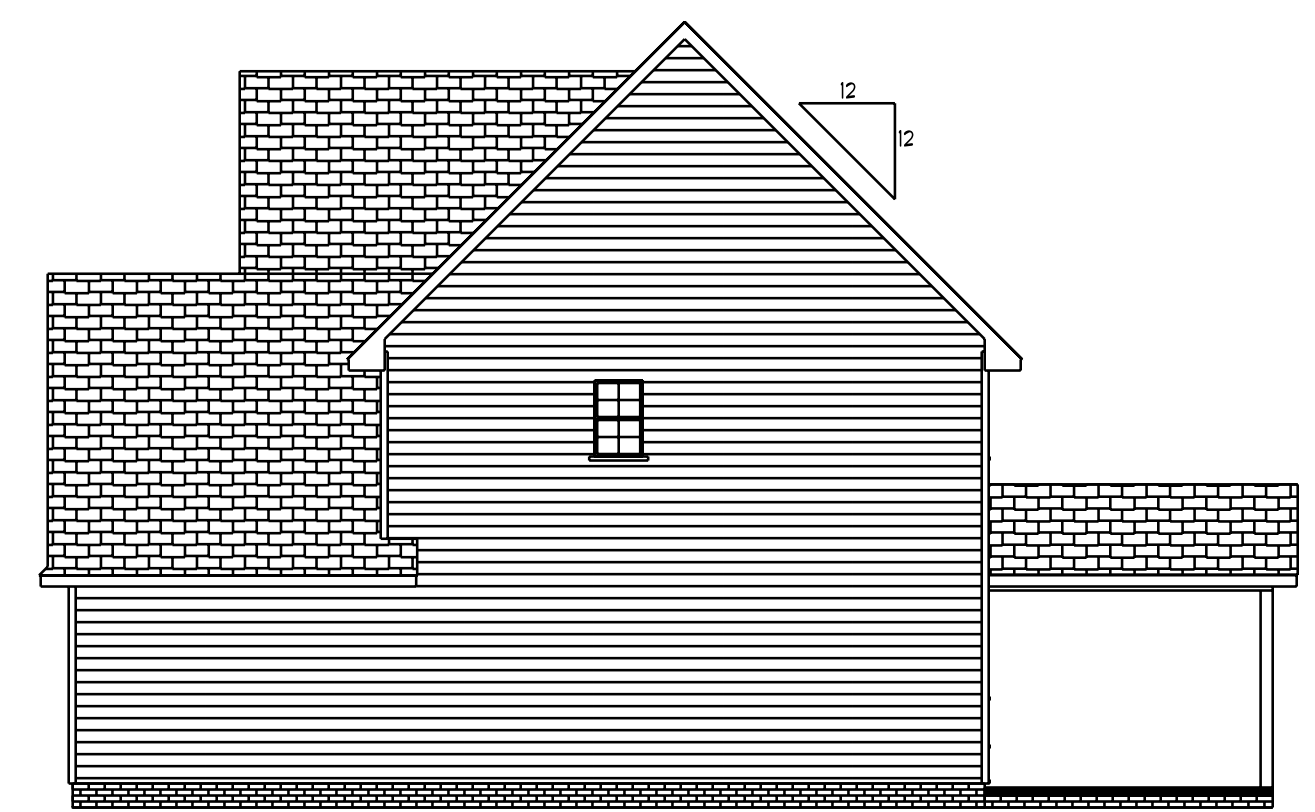
Optional
3rd Garage



Left Elevation
Scale: 1/8" = 1'0"



Rear Elevation
Scale: 1/8" = 1'0"

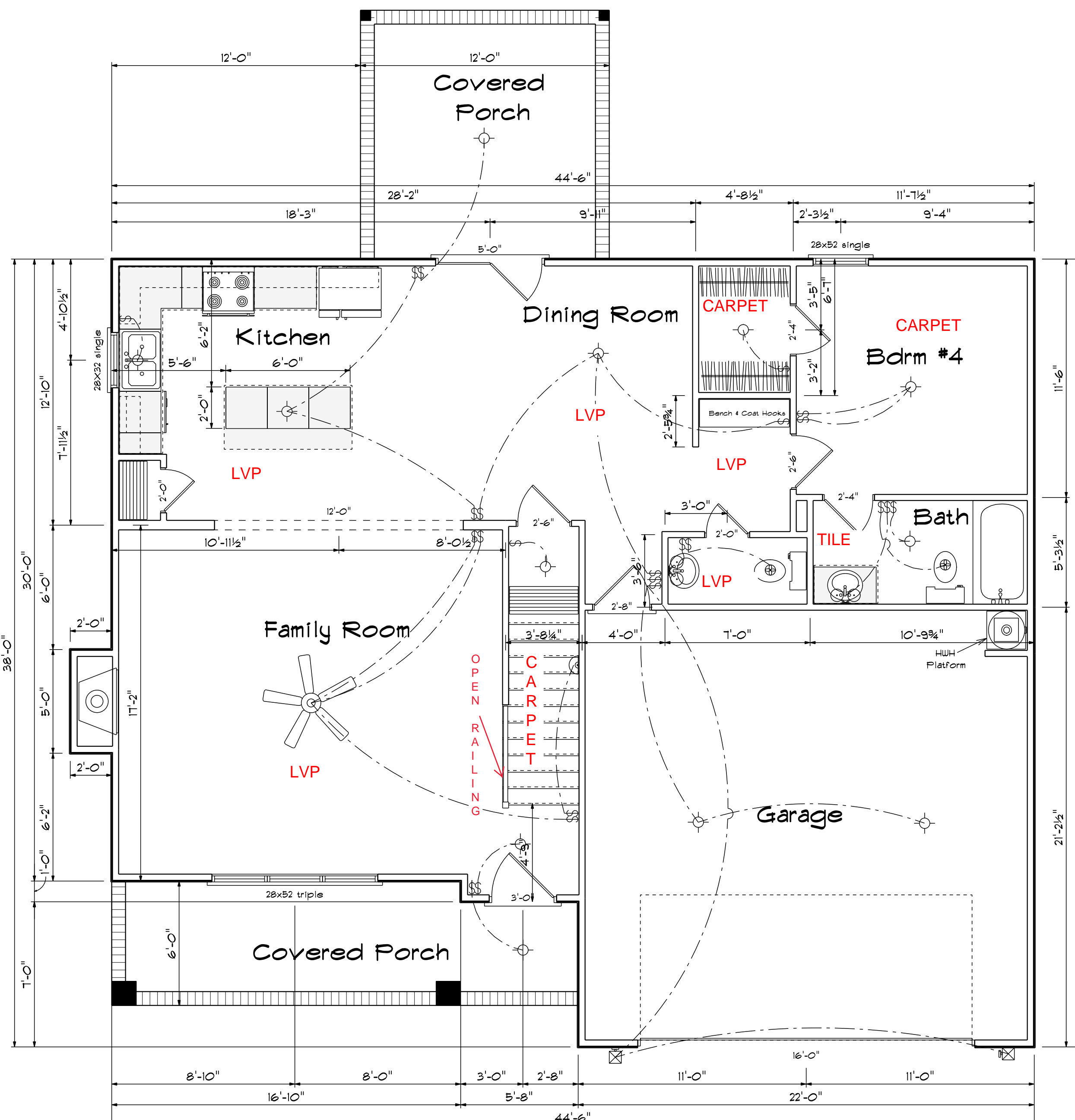


Right Elevation
Scale: 1/8" = 1'0"

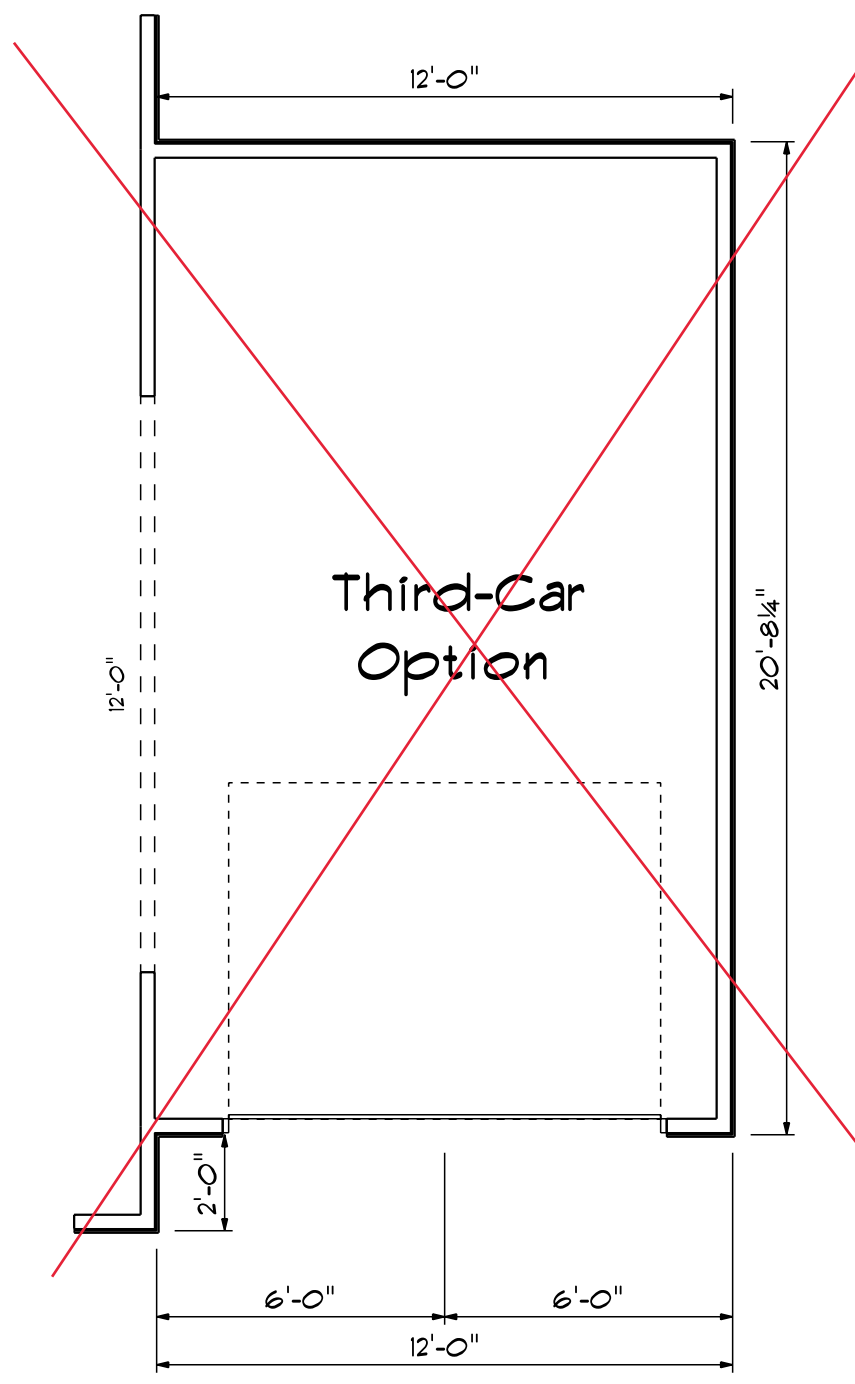
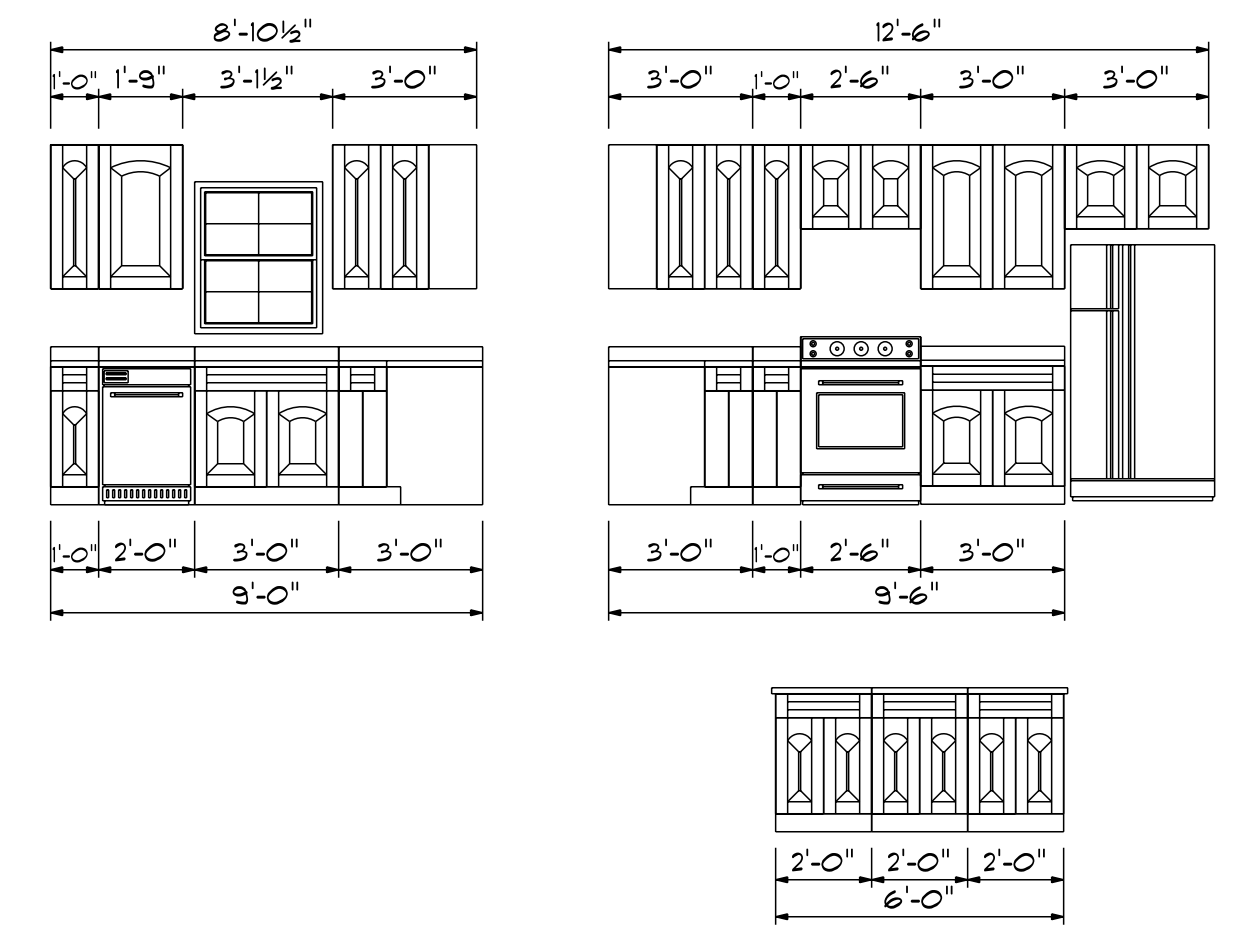
DATE: 1/15/2021
REVISED
DRAWING#

SCALE: 1/4"
DRAWN BY
APPROVED

The Ashville



Kitchen Cabinets



FIRST FLOOR OPENING SCHEDULE			
PRODUCT CODE	SIZE	HINGE	COUNT
36X80 COLONIAL A 1	3'-0"	R	1
60X80 FRENCH A 2	5'-0"	RN	1
192X84 - 8 PANEL - 4 WINDOW	16'-0"	U	1
2-0 Door Unit	2'-0"	R	1
2-4 Door Unit	2'-4"	R	1
2-4 Door Unit	2'-4"	L	1
2-6 Door Unit	2'-6"	R	2
2-8 Door Unit	2'-8"	L	1
3-0 Doublehung Door Unit	3'-0"	LR	1
28X32 single	2'-8" x 3'-2"	N	1
28x52 single	2'-8" x 5'-2"	N	1
28x52 triple	8'-0" x 5'-2"	NA	1

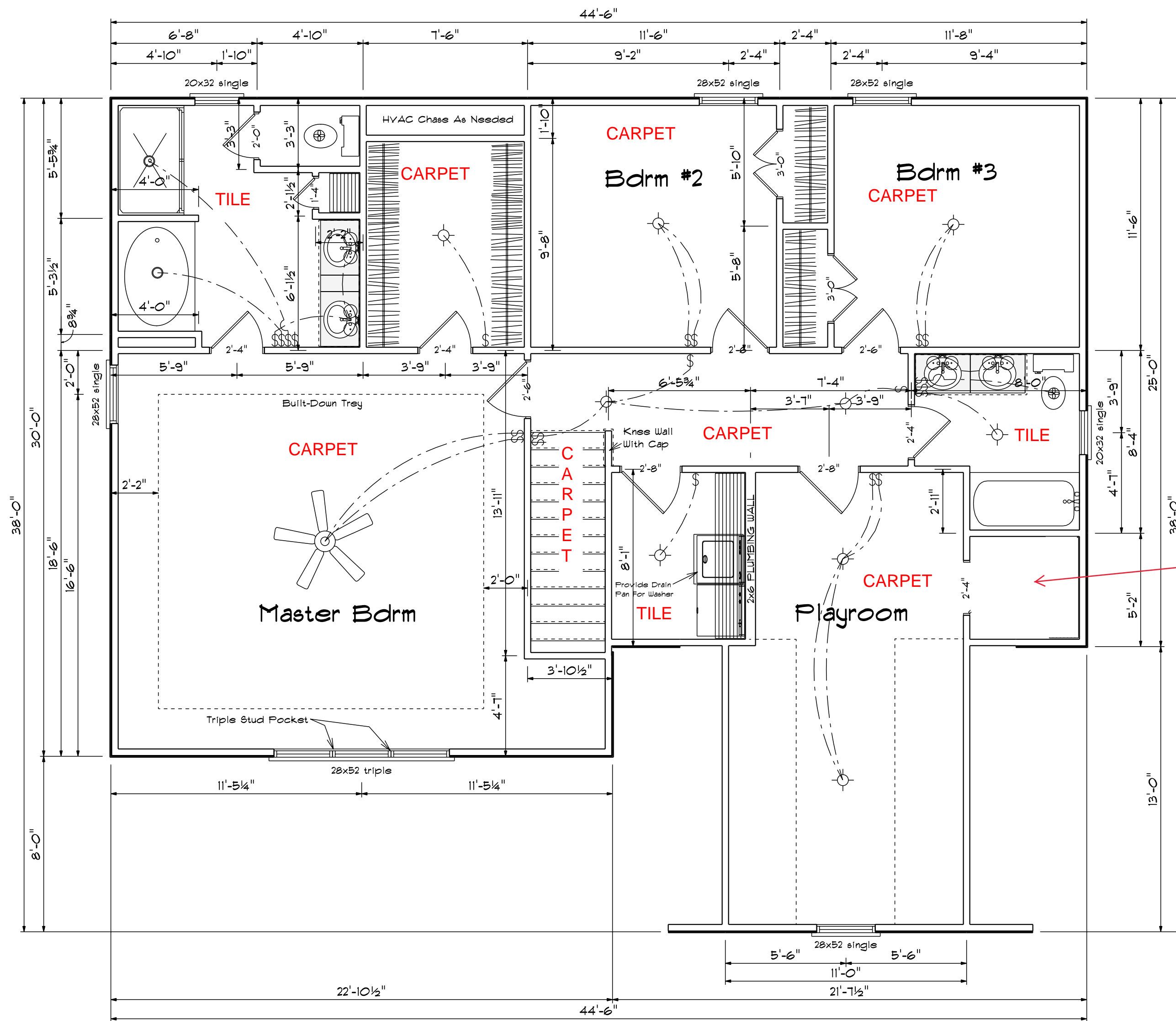
Areas	
First Floor	1063
Second Floor	1344
=====	
Total Heated	2407
Garage	461
Front Porch	128
Covered Porch	144
Optionag Garage	257

First Floor Plan
Scale: 1/4" = 1'-0"

DATE: 1/15/2021
REVISID
DRAWING#

SCALE: 1/4"
DRAUN BY
APPROVED

The Ashville



SECOND FLOOR OPENING SCHEDULE			
PRODUCT CODE	SIZE	HINGE	COUNT
1-6 Door Unit	1'-4"	R	1
2-0 Door Unit	2'-0"	R	1
2-4 Door Unit	2'-4"	R	1
2-4 Door Unit	2'-4"	L	2
2-6 Door Unit	2'-6"	R	2
2-6 Door Unit	2'-6"	L	1
2-8 Door Unit	2'-8"	R	2
3-0 Doublehung Door Unit	3'-0"	LR	2
20x32 single	2'-0" x 3'-2"	N	2
28x52 single	2'-8" x 5'-2"	N	5
28x52 triple	8'-0" x 5'-2"	NA	1

NO SHELVING,
NO DOOR.
CASED OPENING
ONLY

Second Floor Plan

Scale: 1/4" = 1'-0"

DATE: 1/15/2021

REVISED

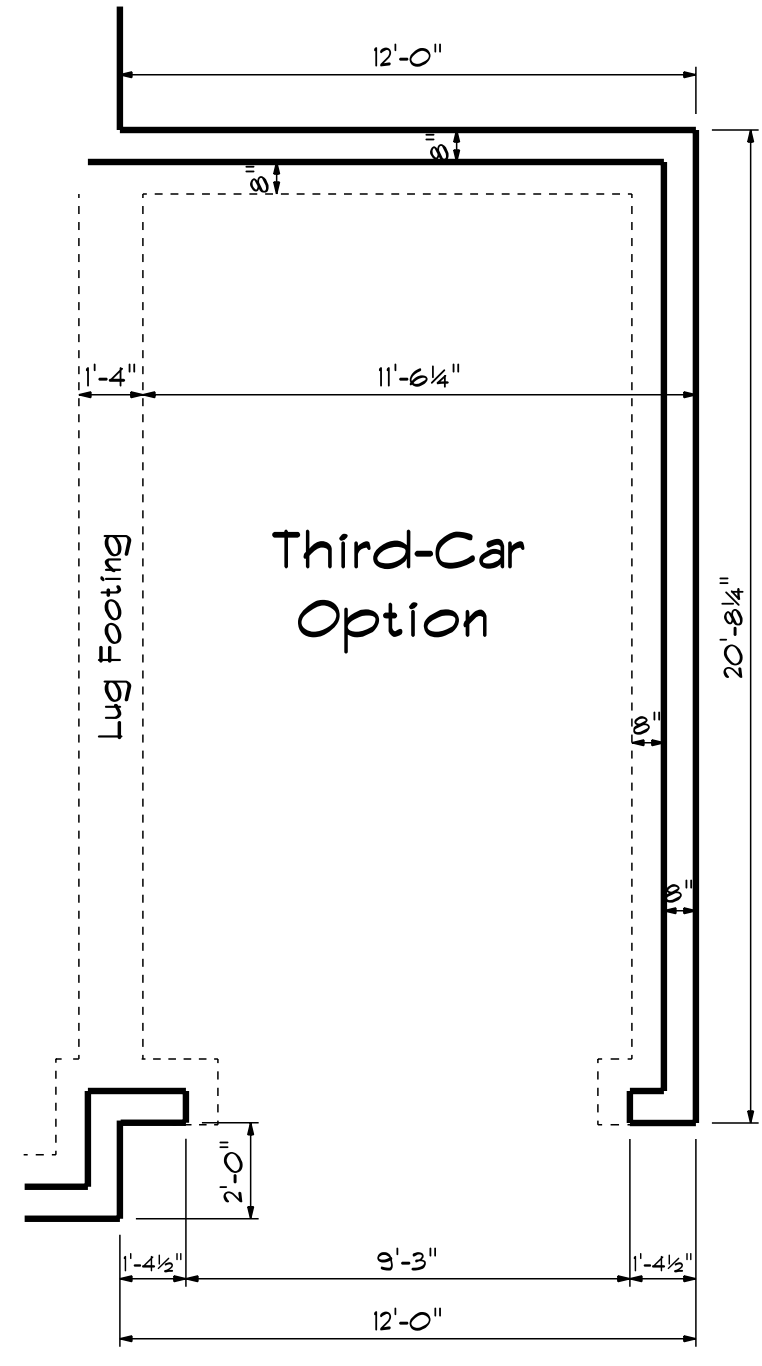
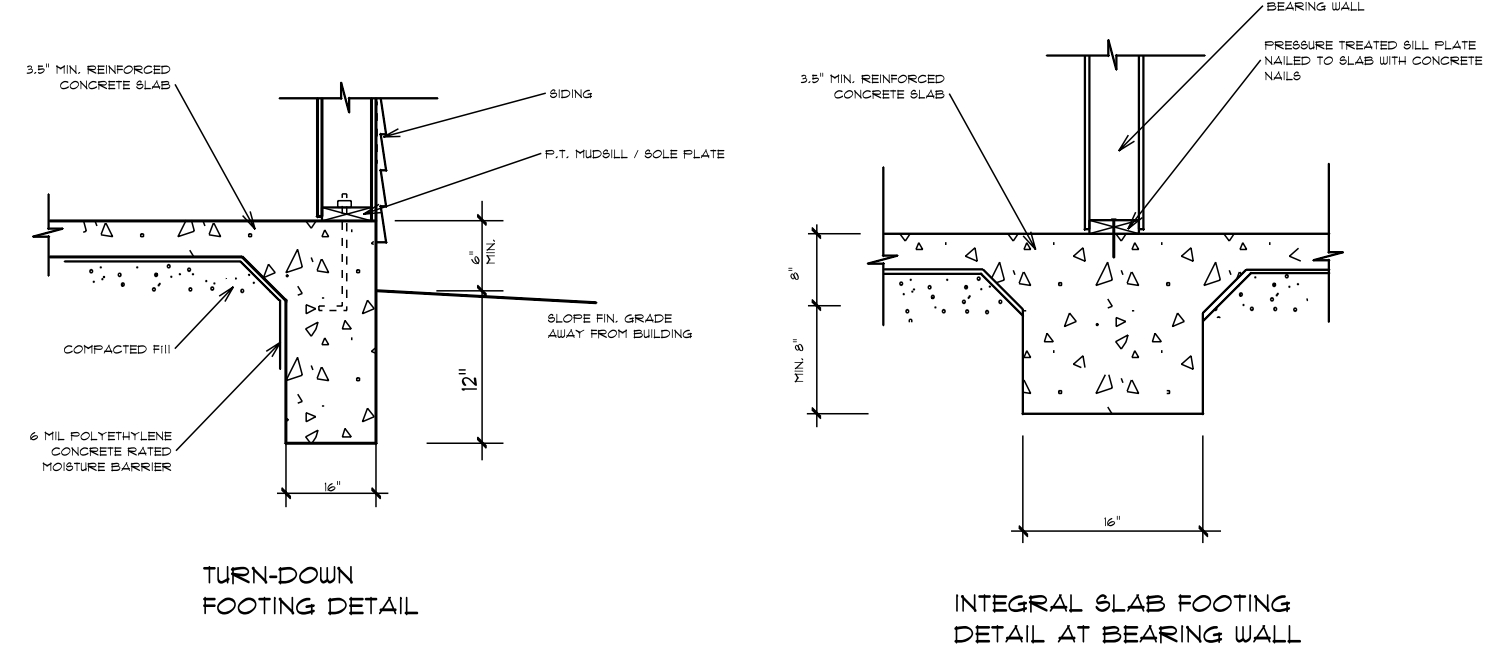
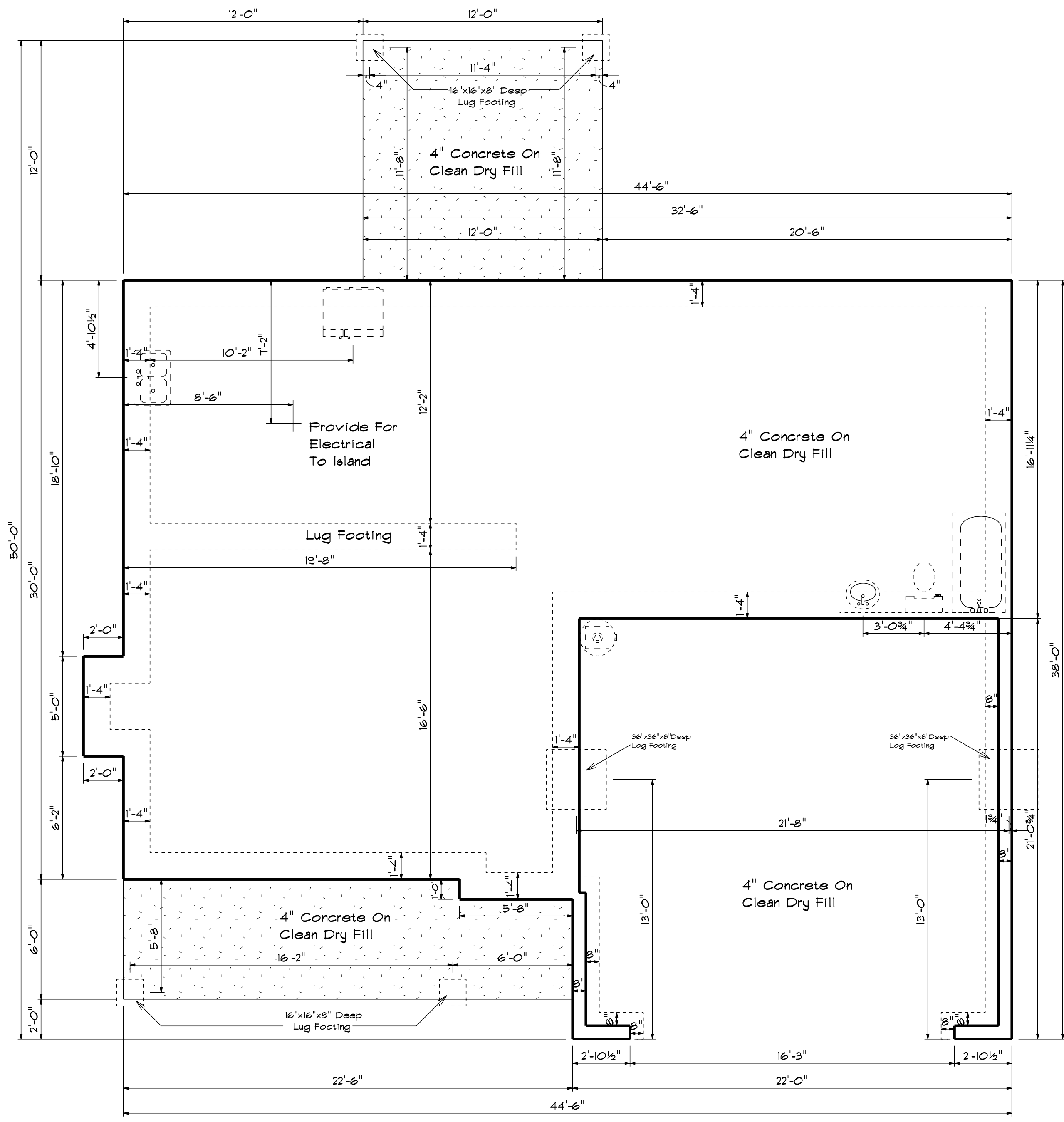
DRAWING#

SCALE: 1/4"

DRAWN BY

APPROVED

The Ashville



Foundation Plan
Scale: 1/4" = 1'-0"

DATE: 1/15/2021
REVISID
DRAWING#
SCALE: 1/4"
DRAWN BY
APPROVED

The Ashville