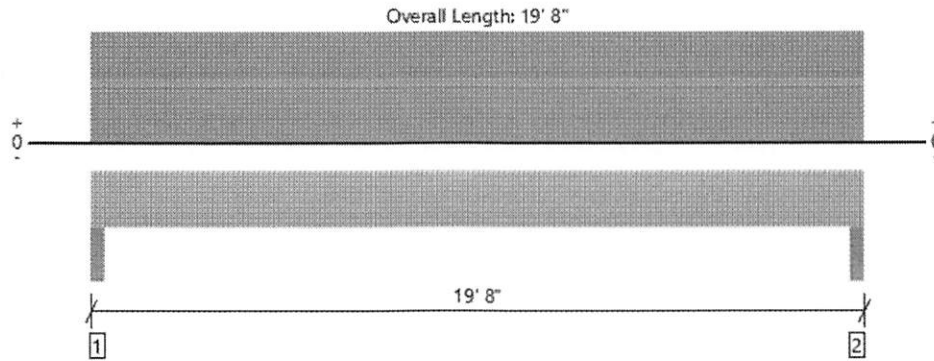


Level			
Member Name	Results	Current Solution	Comments
Beam across living room and kitchen	Passed	3 piece(s) 1 3/4" x 16" 2.0E Microllam® LVL	
Garage Door Header	Passed	2 piece(s) 1 3/4" x 14" 2.0E Microllam® LVL	

ForteWEB Software Operator	Job Notes
James (Jay) Johnson Weyerhaeuser (910) 495-5383 jay.johnson@weyerhaeuser.com	



Level, Beam across living room and kitchen
3 piece(s) 1 3/4" x 16" 2.0E Microllam® LVL



All locations are measured from the outside face of left support (or left cantilever end). All dimensions are horizontal.

Design Results	Actual @ Location	Allowed	Result	LDF	Load: Combination (Pattern)
Member Reaction (lbs)	5138 @ 2"	13322 (3.50")	Passed (39%)	--	1.0 D + 0.75 L + 0.75 Lr (All Spans)
Shear (lbs)	4289 @ 1' 7 1/2"	19950	Passed (21%)	1.25	1.0 D + 0.75 L + 0.75 Lr (All Spans)
Moment (Ft-lbs)	24413 @ 9' 10"	58339	Passed (42%)	1.25	1.0 D + 0.75 L + 0.75 Lr (All Spans)
Live Load Defl. (in)	0.214 @ 9' 10"	0.644	Passed (L/999+)	--	1.0 D + 0.75 L + 0.75 Lr (All Spans)
Total Load Defl. (in)	0.492 @ 9' 10"	0.967	Passed (L/472)	--	1.0 D + 0.75 L + 0.75 Lr (All Spans)

System : Floor
 Member Type : Flush Beam
 Building Use : Residential
 Building Code : IBC 2015
 Design Methodology : ASD

- Deflection criteria: LL (L/360) and TL (L/240).
- Allowed moment does not reflect the adjustment for the beam stability factor.

Supports	Bearing Length			Loads to Supports (lbs)					Accessories
	Total	Available	Required	Dead	Floor Live	Roof Live	Snow	Factored	
1 - Column - SPF	3.50"	3.50"	1.50"	2901	1114	1868	1114	5138	None
2 - Column - SPF	3.50"	3.50"	1.50"	2901	1114	1868	1114	5138	None

Lateral Bracing	Bracing Intervals	Comments
Top Edge (Lu)	15' 2" o/c	
Bottom Edge (Lu)	19' 8" o/c	

•Maximum allowable bracing intervals based on applied load.

Multiple Member Connections							
Type	Location	Fastener	Placement	Rows	O.C.	# of Fasteners	Details
Uniform	0 to 19' 8"	10d Nail (0.128" x 3")	Both Faces	3	12"	--	L17

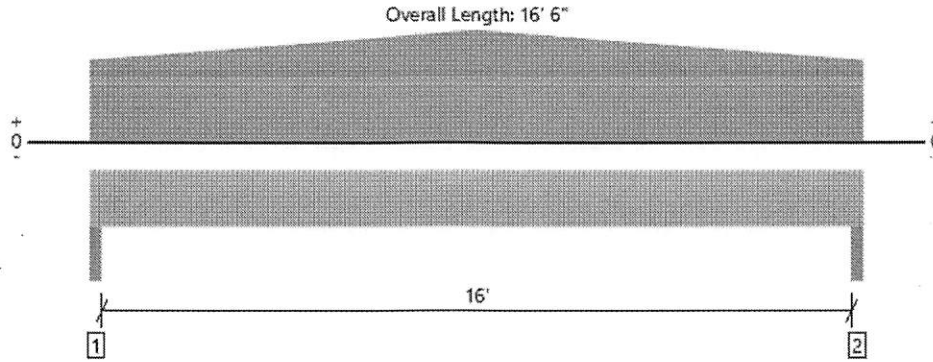
Vertical Loads	Location (Side)	Tributary Width	Dead (0.90)	Floor Live (1.00)	Roof Live (non-snow: 1.25)	Snow (1.15)	Comments
0 - Self Weight (PLF)	0 to 19' 8"	N/A	24.5	--	--	--	
1 - Uniform (PSF)	0 to 19' 8" (Front)	9' 6"	12.0	-	20.0	-	Light attic storage
2 - Uniform (PSF)	0 to 19' 8" (Back)	5' 8"	12.0	20.0	-	-	Light attic storage over kitchen
3 - Uniform (PSF)	0 to 19' 8" (Back)	5' 8"	15.6	-	-	20.0	Roof

Weyerhaeuser Notes
 Weyerhaeuser warrants that the sizing of its products will be in accordance with Weyerhaeuser product design criteria and published design values. Weyerhaeuser expressly disclaims any other warranties related to the software. Use of this software is not intended to circumvent the need for a design professional as determined by the authority having jurisdiction. The designer of record, builder or framer is responsible to assure that this calculation is compatible with the overall project. Accessories (Rim Board, Blocking Panels and Squash Blocks) are not designed by this software. Products manufactured at Weyerhaeuser facilities are third-party certified to sustainable forestry standards. Weyerhaeuser Engineered Lumber Products have been evaluated by ICC-ES under evaluation reports ESR-1153 and ESR-1387 and/or tested in accordance with applicable ASTM standards. For current code evaluation reports, Weyerhaeuser product literature and installation details refer to www.eyerhaeuser.com/woodproducts/document-library.
 The product application, input design loads, dimensions and support information have been provided by ForteWEB Software Operator

ForteWEB Software Operator	Job Notes
James (Jay) Johnson Weyerhaeuser (910) 495-5383 jay.johnson@weyerhaeuser.com	



Level, Garage Door Header
2 piece(s) 1 3/4" x 14" 2.0E Microllam® LVL



All locations are measured from the outside face of left support (or left cantilever end). All dimensions are horizontal.

Design Results	Actual @ Location	Allowed	Result	LDF	Load: Combination (Pattern)
Member Reaction (lbs)	2370 @ 1 1/2"	7613 (3.00")	Passed (31%)	--	1.0 D + 0.75 L + 0.75 S (All Spans)
Shear (lbs)	1947 @ 1' 5"	9310	Passed (21%)	1.00	1.0 D + 1.0 L (All Spans)
Moment (Ft-lbs)	9661 @ 8' 3"	24258	Passed (40%)	1.00	1.0 D + 1.0 L (All Spans)
Live Load Defl. (in)	0.095 @ 8' 3"	0.542	Passed (L/999+)	--	1.0 D + 0.75 L + 0.75 S (All Spans)
Total Load Defl. (in)	0.318 @ 8' 3"	0.813	Passed (L/613)	--	1.0 D + 0.75 L + 0.75 S (All Spans)

System : Wall
 Member Type : Header
 Building Use : Residential
 Building Code : IBC 2015
 Design Methodology : ASD

- Deflection criteria: LL (L/360) and TL (L/240).
- Allowed moment does not reflect the adjustment for the beam stability factor.

Supports	Bearing Length			Loads to Supports (lbs)				Accessories
	Total	Available	Required	Dead	Floor Live	Snow	Factored	
1 - Trimmer - SPF	3.00"	3.00"	1.50"	1627	660	330	2370	None
2 - Trimmer - SPF	3.00"	3.00"	1.50"	1627	660	330	2370	None

Lateral Bracing	Bracing Intervals	Comments
Top Edge (Lu)	16' 6" o/c	
Bottom Edge (Lu)	16' 6" o/c	

•Maximum allowable bracing intervals based on applied load.

Vertical Loads	Location	Tributary Width	Dead (0.90)	Floor Live (1.00)	Snow (1.15)	Comments
0 - Self Weight (PLF)	0 to 16' 6"	N/A	14.3	--	--	
1 - Uniform (PSF)	0 to 16' 6"	2'	12.0	40.0	-	Floor
2 - Uniform (PSF)	0 to 16' 6"	2'	17.0	-	20.0	Roof
3 - Uniform (PLF)	0 to 16' 6"	N/A	50.0	-	-	Wall above header
4 - Tapered (PLF)	0 to 8' 3"	N/A	30.0 to 120.0	-	-	Gable End Wall
5 - Tapered (PLF)	8' 3" to 16' 6"	N/A	120.0 to 30.0	-	-	Gable End Wall

Weyerhaeuser Notes
 Weyerhaeuser warrants that the sizing of its products will be in accordance with Weyerhaeuser product design criteria and published design values. Weyerhaeuser expressly disclaims any other warranties related to the software. Use of this software is not intended to circumvent the need for a design professional as determined by the authority having jurisdiction. The designer of record, builder or framer is responsible to assure that this calculation is compatible with the overall project. Accessories (Rim Board, Blocking Panels and Squash Blocks) are not designed by this software. Products manufactured at Weyerhaeuser facilities are third-party certified to sustainable forestry standards. Weyerhaeuser Engineered Lumber Products have been evaluated by ICC-ES under evaluation reports ESR-1153 and ESR-1387 and/or tested in accordance with applicable ASTM standards. For current code evaluation reports, Weyerhaeuser product literature and installation details refer to www.weyerhaeuser.com/woodproducts/document-library.
 The product application, input design loads, dimensions and support information have been provided by ForteWEB Software Operator

ForteWEB Software Operator	Job Notes
James (Jay) Johnson Weyerhaeuser (910) 495-5383 jay.johnson@weyerhaeuser.com	

