



COMMENTS: \_\_\_\_\_

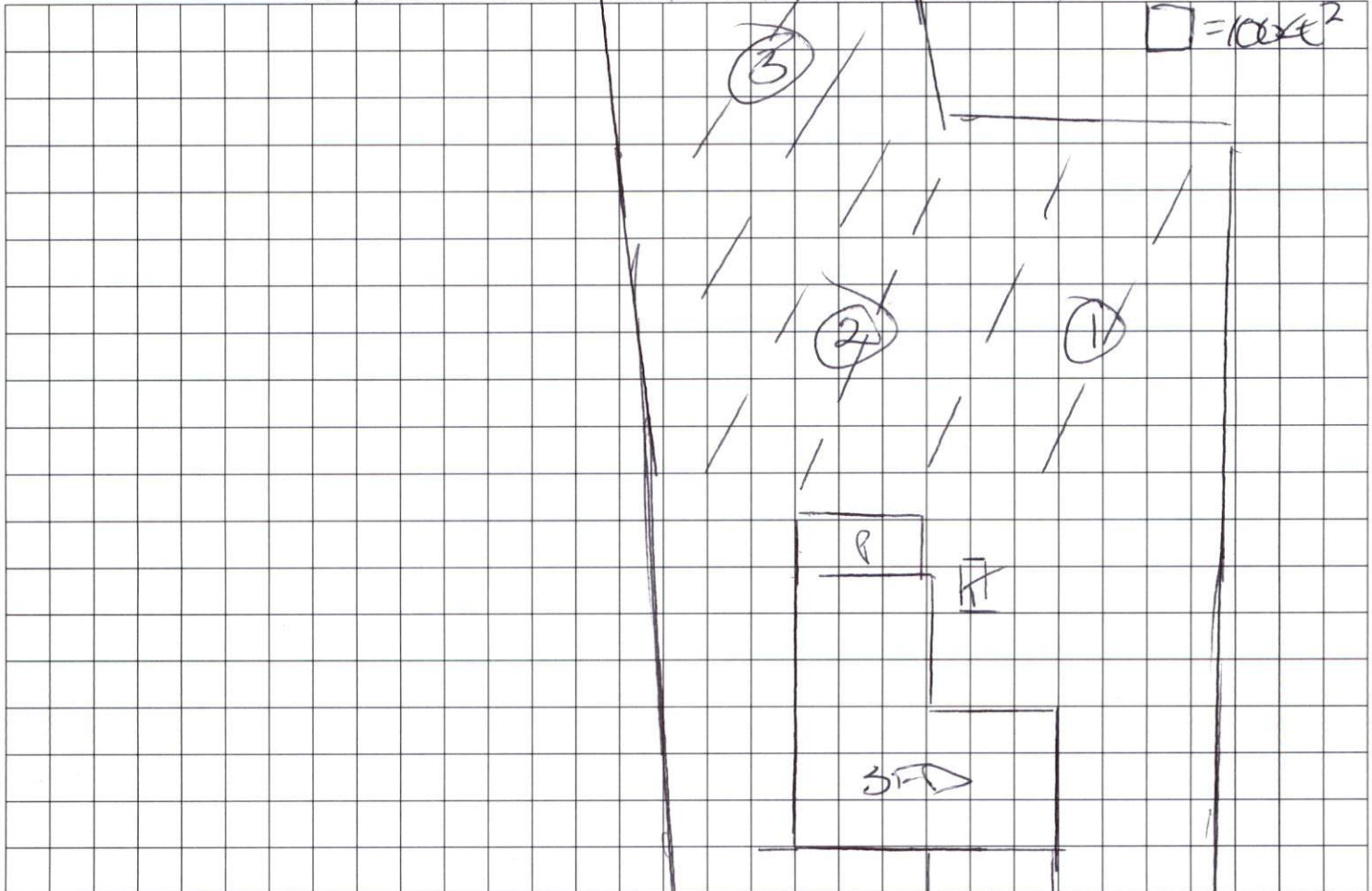
LANDSCAPE POSITIONS	GROUP	TEXTURES	.1955 LTAR	CONSISTENCE MOIST	WET	
R-RIDGE	I	S-SAND	1.2 - 0.8	VFR-VERY FRIABLE	NS-NON-STICKY	
S-SHOULDER SLOPE		LS-LOAMY SAND		FR-FRIABLE	SS-SLIGHTLY STICKY	
L-LINEAR SLOPE	II	SL-SANDY LOAM	0.8 - 0.6	FI-FIRM	S-STICKY	
FS-FOOT SLOPE		L-LOAM		VFI-VERY FIRM	VS-VERY STICKY	
N-NOSE SLOPE	III	SI-SILT	0.6 - 0.3	EFI-EXTREMELY FIRM	NP-NON-PLASTIC	
H-HEAD SLOPE		SIL-SILT LOAM		0.4 - 0.1		SP-SLIGHTLY STICKY
CC-CONCLAVE SLOPE		CL-CLAY LOAM				P-PLASTIC
CV-CONVEX SLOPE		SCL-SANDY CLAY LOAM				
T-TERRACE	IV	SIC-SILTY CLAY	0.4 - 0.1			
FP-FLOOD PLAN		C-CLAY				
		SC-SANDY CLAY				

STRUCTURE  
 SG-SINGLE GRAIN  
 M- MASSIVE  
 CR-CRUMB  
 GR-GRANULAR  
 SBK-SUBANGULAR BLOCKY  
 ABK-ANGULAR BLOCKY  
 PL-PLATY  
 PR-PRISMATIC

MINERALOGY  
 SLIGHTLY EXPANSIVE  
 EXPANSIVE

DITCH

Show profile locations and other site features (dimensions, references or benchmark, and North)



BLUE MONARCH LN.