

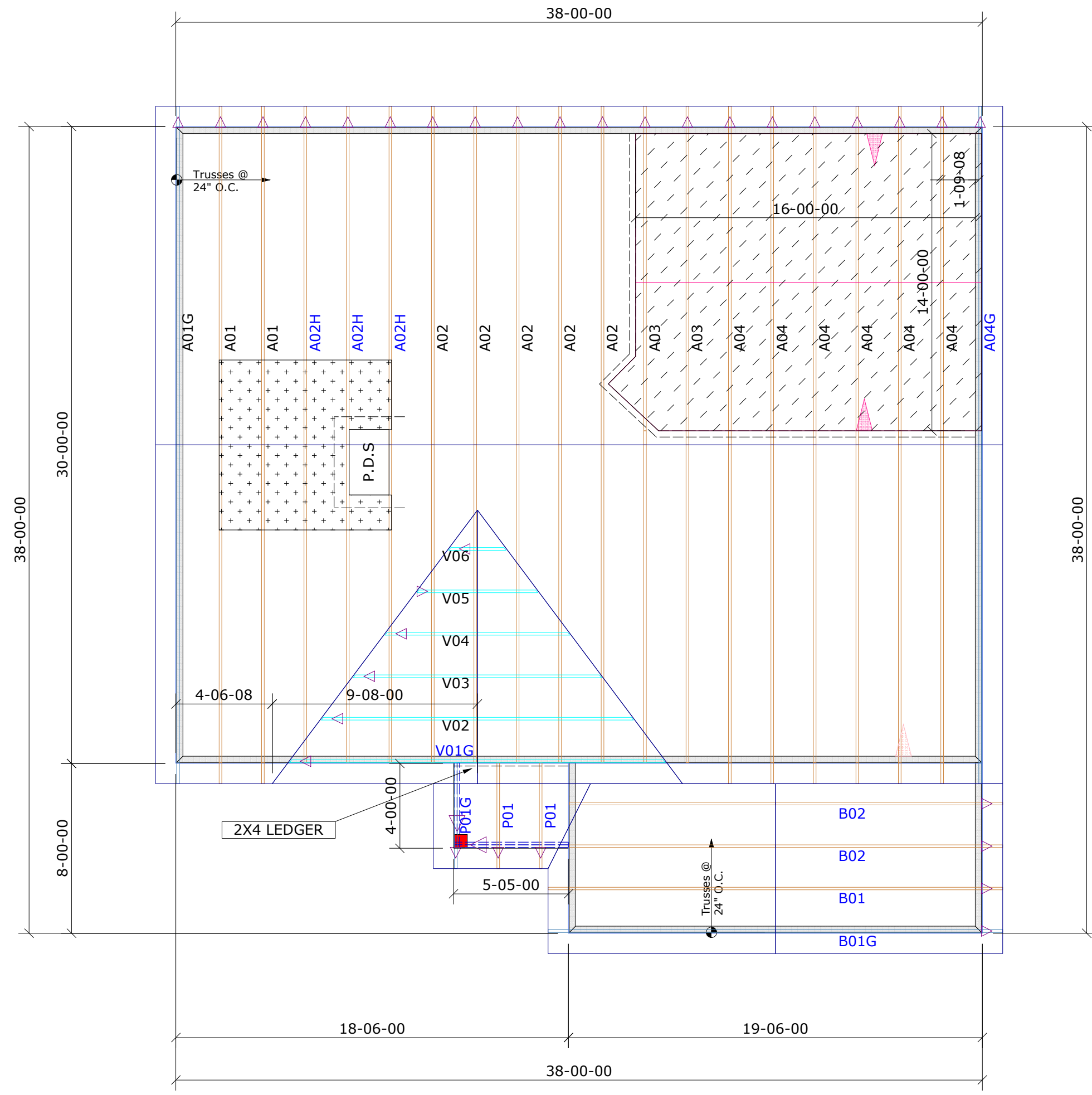
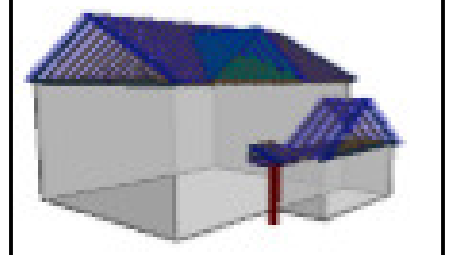
General Notes:
 - Per ANSI/TPI 1-2002 all "Truss to Wall" connections are the responsibility of the Building Designer, not the Truss Manufacturer.
 - Dimensions are Feet-Inches- Sixteenths.
 - Trusses are to be 24" o.c. unless noted otherwise (U.N.O.)
 - Trusses are not designed to support brick U.N.O.
 - Do not cut or modify trusses without first contacting Builders FirstSource.
 - Immediately contact Builders FirstSource if trusses are damaged.

Connection Notes:
 - All hangers are to be Simpson or equivalent U.N.O.
 - Use Manufacturer's specifications for all hanger connections U.N.O.
 - Use 10d x 1 1/2" Nails in hanger connections to single ply roof girder trusses.

Floor notes:
 - Shift truss as required to avoid plumbing traps.
 - Installation Contractor and/or Field Supervisor are to verify all dimensions, trap locations, and options prior to installation

Dimension Notes:
 - Drawing not to scale. Do not scale dimensions

△◁▷ LEFT END OF TRUSS AS SHOWN ON TRUSS DETAIL DRAWINGS ARE INDICATED BY TRIANGLE ICONS.



HANGER LIST		ALL TIE DOWNS H2.5A UNLESS NOTED
		SPECIAL ITEMS LIST
		MISC MATERIAL
JOHN DOVE		
BROOKE	ELEV:	A

---	NC	LOT: 8
APPWRIGHT #		

• [OPTION 1] • [OPTION 2] • [OPTION 3]		
CODE:		IRC 2015
LOADING:		
T.C.L.L.	20 PSF	
DESIGNED BY:	AS	T.C.D.L.
LAYOUT:	---	B.C.L.L.
L/O DATE:	3/10/2022	B.C.D.L.
		10 PSF
REVISION HISTORY		
REV1:	XX/XX/XX	M.P.H.
REV2:	XX/XX/XX	EXPOSURE CATEGORY
REV3:	XX/XX/XX	B (WOODED AREAS/OTHERS)
PICK TICKET:		JOB NO.:
---		---
SALES NO.:		ACCT NO.:
---		---

HATCH LEGEND	
	ATTIC ROOM
	VOLUME CEILING
	STICK FRAMING