

General Notes:

- Per ANSI/TPI 1-2002 all " Truss to Wall" connections are the responsibility of the Building Designer, not the Truss Manufacturer.
- Dimensions are Feet-Inches- Sixteenths.
- Trusses are to be 24" o.c. unless noted otherwise (U.N.O.)
- Trusses are not designed to support brick U.N.O.
- Do not cut or modify trusses without first contacting Builders FirstSource.
- Immediately contact Builders FirstSource if trusses are damaged.

Connection Notes:

- All hangers are to be Simpson or equivalent U.N.O.
- Use Manufacturer's specifications for all hanger connections U.N.O.
- Use 10d x 1 1/2" Nails in hanger connections to single ply roof girder trusses.

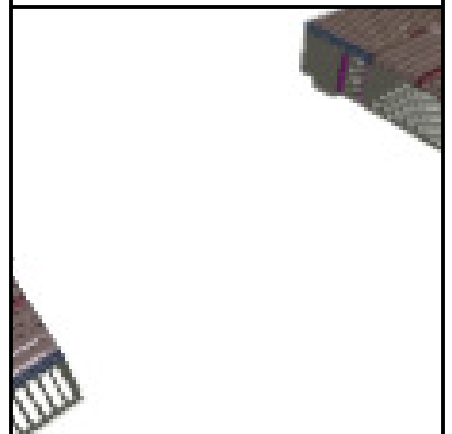
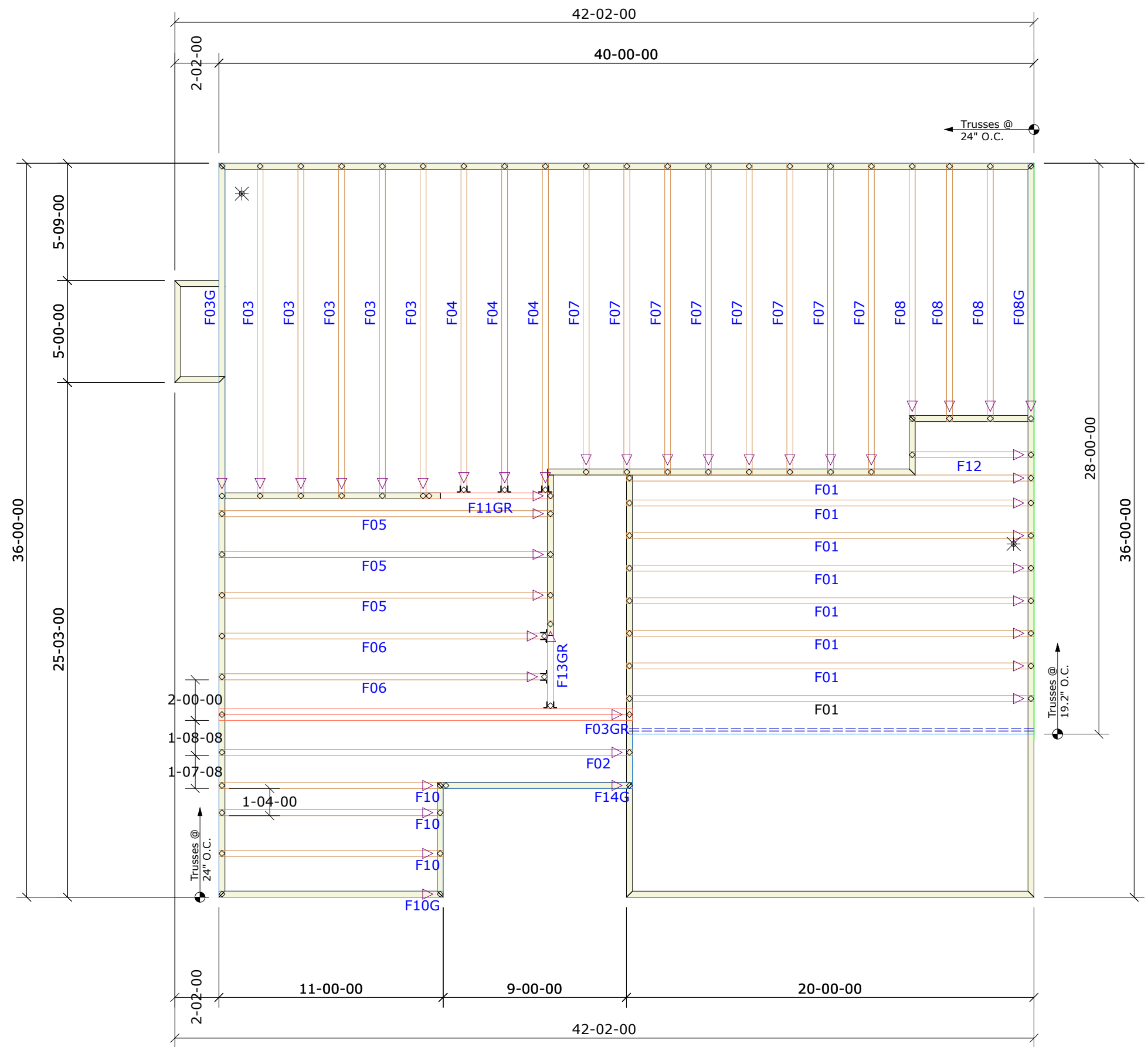
Floor notes:

- Shift truss as required to avoid plumbing traps.
- Installation Contractor and/or Field Supervisor are to verify all dimensions, trap locations, and options prior to installation

Dimension Notes:

- Drawing not to scale. Do not scale dimensions

△▽▽ LEFT END OF TRUSS AS SHOWN ON TRUSS DETAIL DRAWINGS ARE INDICATED BY TRIANGLE ICONS.



HANGER LIST		ALL TIE DOWNS H2.5A UNLESS NOTED	
6	THA422	J	L
		SPECIAL ITEMS LIST	
		MISC MATERIAL	
JOHN DOVE			
AUBREY		ELEV: A	
208 FARRAH SHEA WAY			
---		NC LOT: 9	
2ND FLOOR GARAGE RIGHT		APPWRIGHT #	
		3100013	
		CODE: IRC 2015	
		LOADING:	
		T.C.L.L. 40 PSF	
		T.C.D.L. 10 PSF	
DESIGNED BY: ---		B.C.L.L. 0 PSF	
LAYOUT: ---		B.C.D.L. 5 PSF	
L/O DATE: 3/15/2022			
		REVISION HISTORY	
		WIND:	
		REV1: XX/XX/XX M.P.H. 115 MPH	
REV2: XX/XX/XX EXPOSURE CATEGORY			
REV3: XX/XX/XX B (WOODED AREAS/OTHERS)			
PICK TICKET: ---		JOB NO.: ---	
SALES NO.: ---		ACCT NO.: ---	

HATCH LEGEND	
	ATTIC ROOM
	VOLUME CEILING
	STICK FRAMING