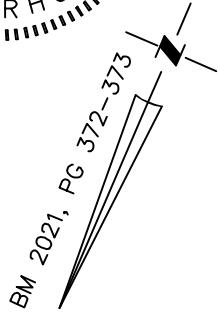
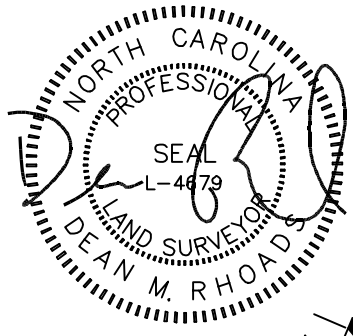


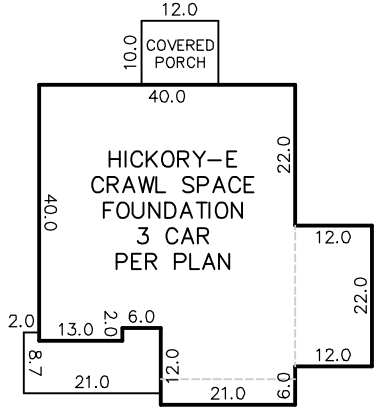
VICINITY MAP
Not To Scale

SETBACKS: (PB 2021 PG 372)

FRONT: 35' FROM R/W
REAR: 25'
SIDE: 10'
CORNER LOT SIDE: 20'



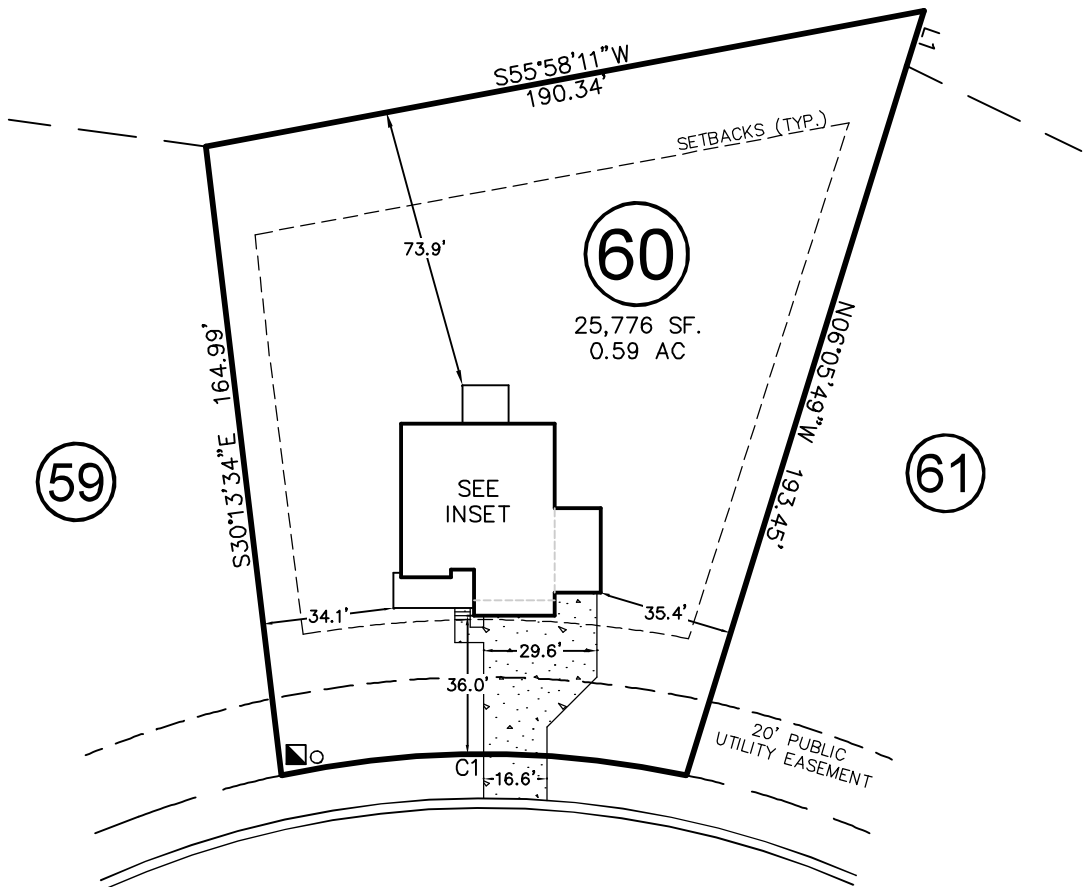
IMPERVIOUS SURFACE AREA	
DESCRIPTION	AREA
HOUSE w/ PORCH	2,245 S.F.
CV PORCH/HVAC	138 S.F.
DRIVEWAY & WALKS	1,010 S.F.
TOTAL (PROPOSED)=	3,393 S.F.
*TOTAL (ALLOWED)=	3,850 S.F.



INSET
NOT TO SCALE



OPEN SPACE



PRINCE PLACE DRIVE
50' PUBLIC R/W & UTILITY EASEMENT

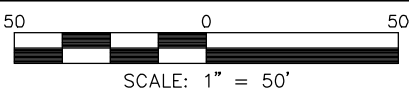
LINE	BEARING	DISTANCE
L1	N06°05'49"W	15.00'

CURVE	RADIUS	ARC LENGTH	CH LENGTH	CH BEARING
C1	255.00'	106.24'	105.47'	N66°38'54"E

THIS PROPERTY MAY BE SUBJECT TO ANY AND ALL APPLICABLE DEED RESTRICTIONS, EASEMENTS, RIGHT-OF-WAY, UTILITIES AND RESTRICTIVE COVENANTS WHICH MAY BE OF RECORD OR IMPLIED

THIS DRAWING DOES NOT REFLECT AS-BUILT INFORMATION

PRELIMINARY PLAT
NOT FOR RECORDATION, CONVEYANCES, OR SALES.



RESIDENTIAL LAND SERVICES, PLLC.

1917 Evans Road
Cary, North Carolina 27513
Phone (919) 378-9316
Firm License # P-0873

HOUSE LOCATION PLOT PLAN

FOR
PRINCE PLACE DRIVE
LOT 60, PRINCE PLACE, PHASE 1
Hectors Creek Township, Harnett County, North Carolina
PROPERTY OF: DAVIDSON HOMES
PLAT BOOK 2021 PAGE 372-373 DEED REFERENCE _____

DRAWN BY: DAW

DATE: JANUARY 19, 2022