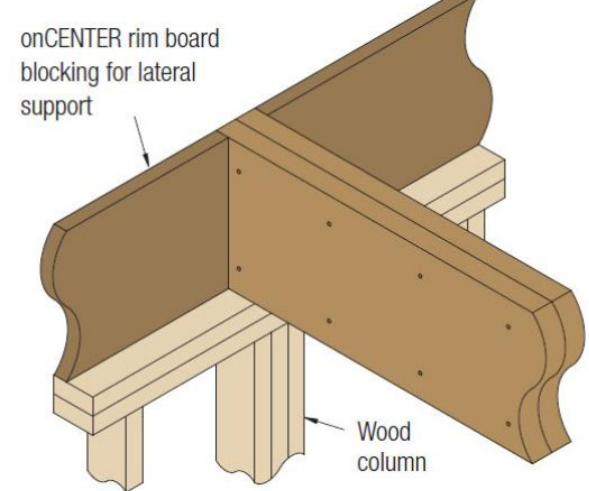
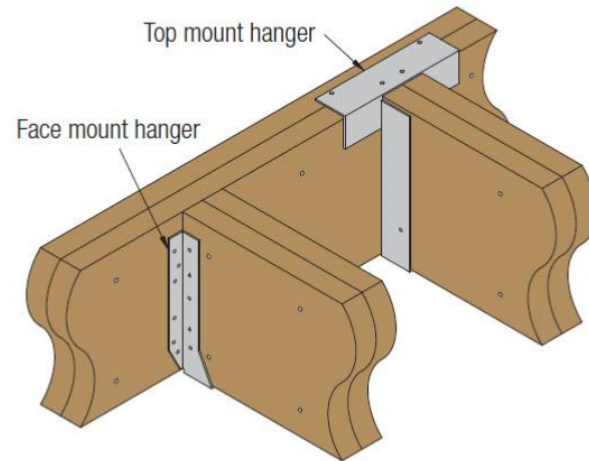


B1 BEARING ON WALL

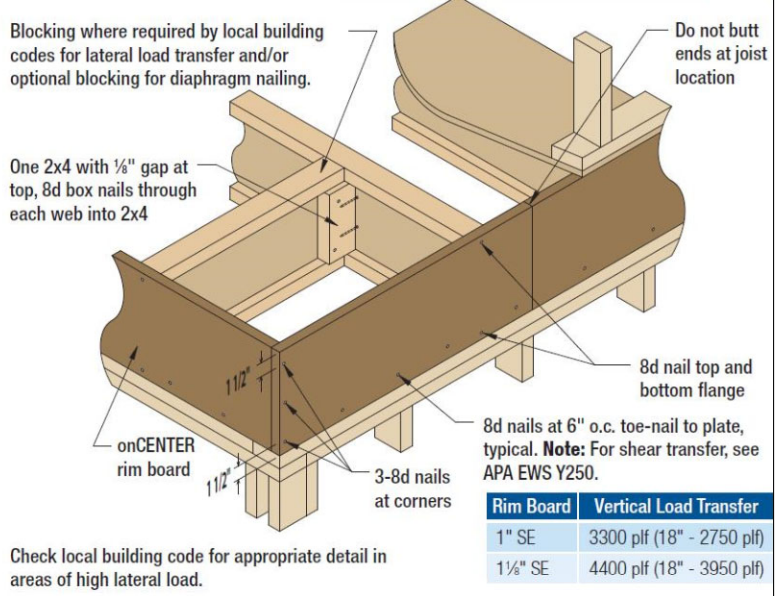


B3 BEAM-TO-BEAM CONNECTION

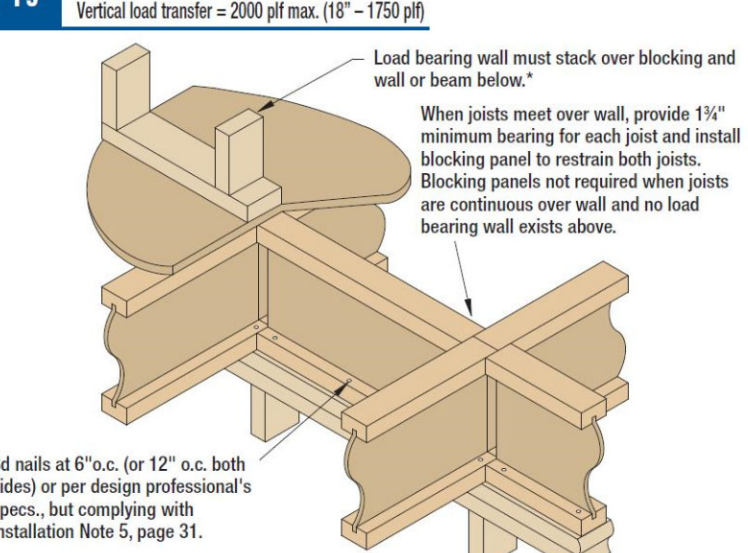


Install hangers per hanger manufacturer's instructions.

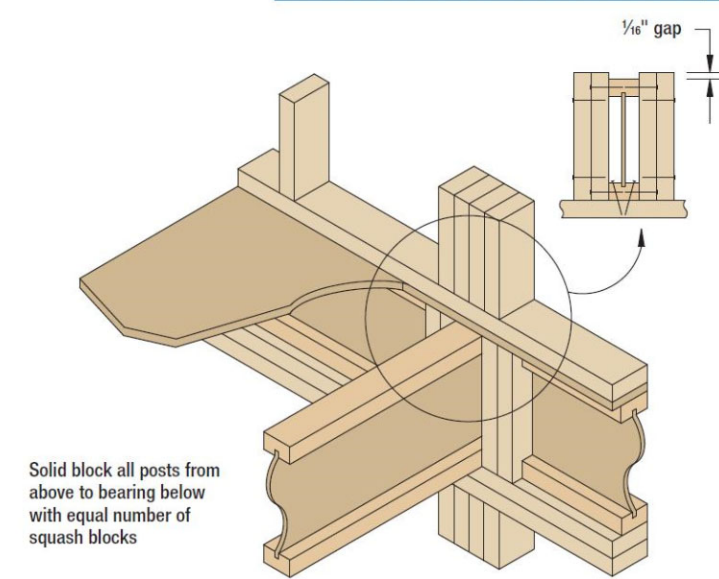
onCENTER® RIM BOARD CLOSURE F5



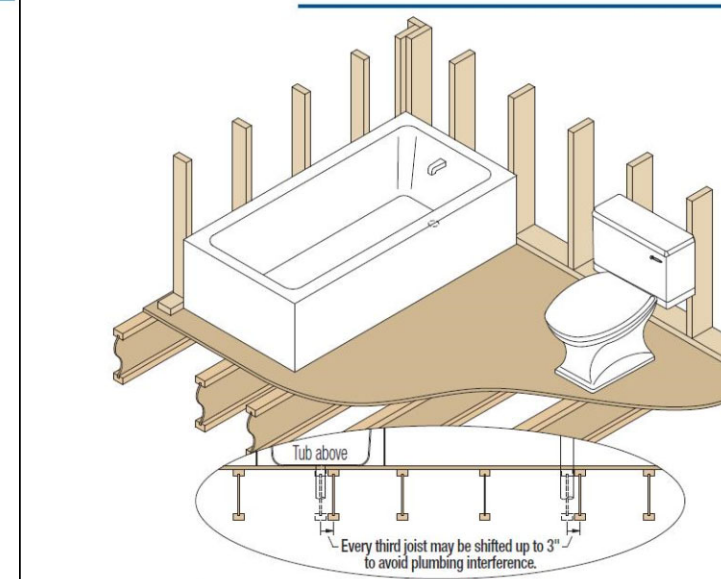
F9 BLOCKING PANEL INTERIOR



SQUASH BLOCKS AT CONCENTRATED LOADS F19



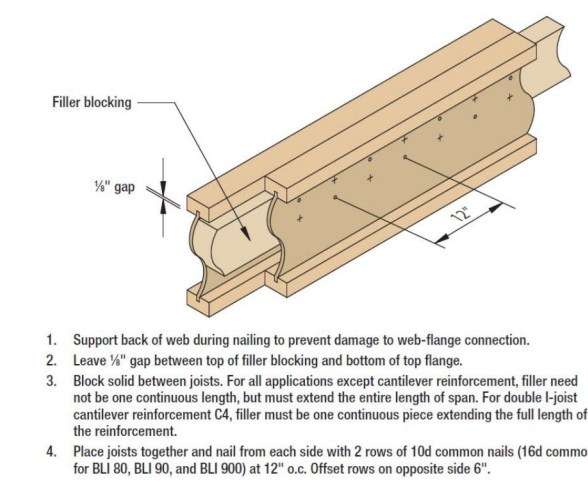
JOIST SPACING BELOW PLUMBING FIXTURES P2



F11 DOUBLE JOIST CONSTRUCTION WITH FILLER

Note: Filler blocks and bearing between joists can be omitted when double joists are loaded evenly from above in the top of both joists, such as when a parallel bearing wall is directly centered over the double joist.

Joist	Depth	Regular Filler Blocking (Detail F10)	Full-depth Filler Blocking (Detail C1, E1, F14 & D7)
RU 150	11 1/2"	2x6 - 1" OSB/plywood	2x6 - 1" OSB/plywood
RU 150	14"	2x6 - 1" OSB/plywood	2x10 - 1" OSB/plywood
RU 150	18"	2x6 - 1" OSB/plywood	2x12 - 1" OSB/plywood
RU 40	9 1/2"	2x6 - 1" OSB/plywood	2x6 - 1" OSB/plywood
RU 40	11 1/2"	2x6 - 1" OSB/plywood	2x6 - 1" OSB/plywood
RU 40	14"	2x6 - 1" OSB/plywood	2x10 - 1" OSB/plywood
RU 40	18"	2x6 - 1" OSB/plywood	2x12 - 1" OSB/plywood
RU 90, 90, 900	11 1/2"	2x6	2x6
RU 90, 90, 900	14"	2x6	2x10
RU 90, 90, 900	18"	2x6	2x12



- Support back of web during nailing to prevent damage to web-flange connectors.
- Leave 1/2" gap between top of filler blocking and bottom of the flange.
- Block solid between joists. For all applications except ceiling reinforcement, filler need not be one continuous length, but must extend the entire length of span. For double joist ceiling reinforcement CA filler must be one continuous piece extending the full length of the reinforcement.
- Place joist together and nail from each side with 2 min of 10d common nails (16d common for RU 150, RU 40, and RU 900 at 12" o.c. Other min on opposite side @ 6").

onCENTER® 2.0E LVL Multiple Ply Fastening

Fastener Type	LVL Depth	Fastener Spacing	2 Ply 2x10 Joist	2 Ply 2x12 Joist	4 Ply 7" Joist	Notes
1/2" HD bolts (0.511" x 3.5") or corner (0.162" x 3.5")	7 1/2" - 11 1/2"	2 (diagonal)	12"	12"	12"	These minimum requirements are adequate only when all loads are evenly applied to the surface of all plies. If loads are applied to side faces of joists, see designer's specifications.
	14" - 18"	3	12"	12"	12"	Top and bottom rows of connectors should be 2" from edge.
	24"	4	12"	12"	12"	
	7 1/2" - 18"	2 (diagonal)	24"	24"	24"	Fastening for depths less than 7-1/2" requires special consideration. Contact Builder.
	24"	3	24"	24"	24"	Fasteners must meet full requirements of shear, but must not be over-driven, over-tightened, or cross-threaded.
	7 1/2" - 18"	2 (diagonal)	24"	24"	24"	Bolt heads must be 1/2" to 1/16" larger than bolt diameter. Bolt must extend through full thickness of member end at least 1/2" beyond. Use a washer under head and nut.
USP WS or Simpson SDS Screws	24"	3 (diagonal)	24"	24"	24"	Spacings closer than those indicated may be acceptable, but require evaluation. Please contact Builder.
	7 1/2" - 18"	2 (diagonal)	24"	24"	24"	Install screws per manufacturer's guidelines.
Simpson Strong-Tie Fastener/Truss Screws	24"	3 (diagonal)	24"	24"	24"	