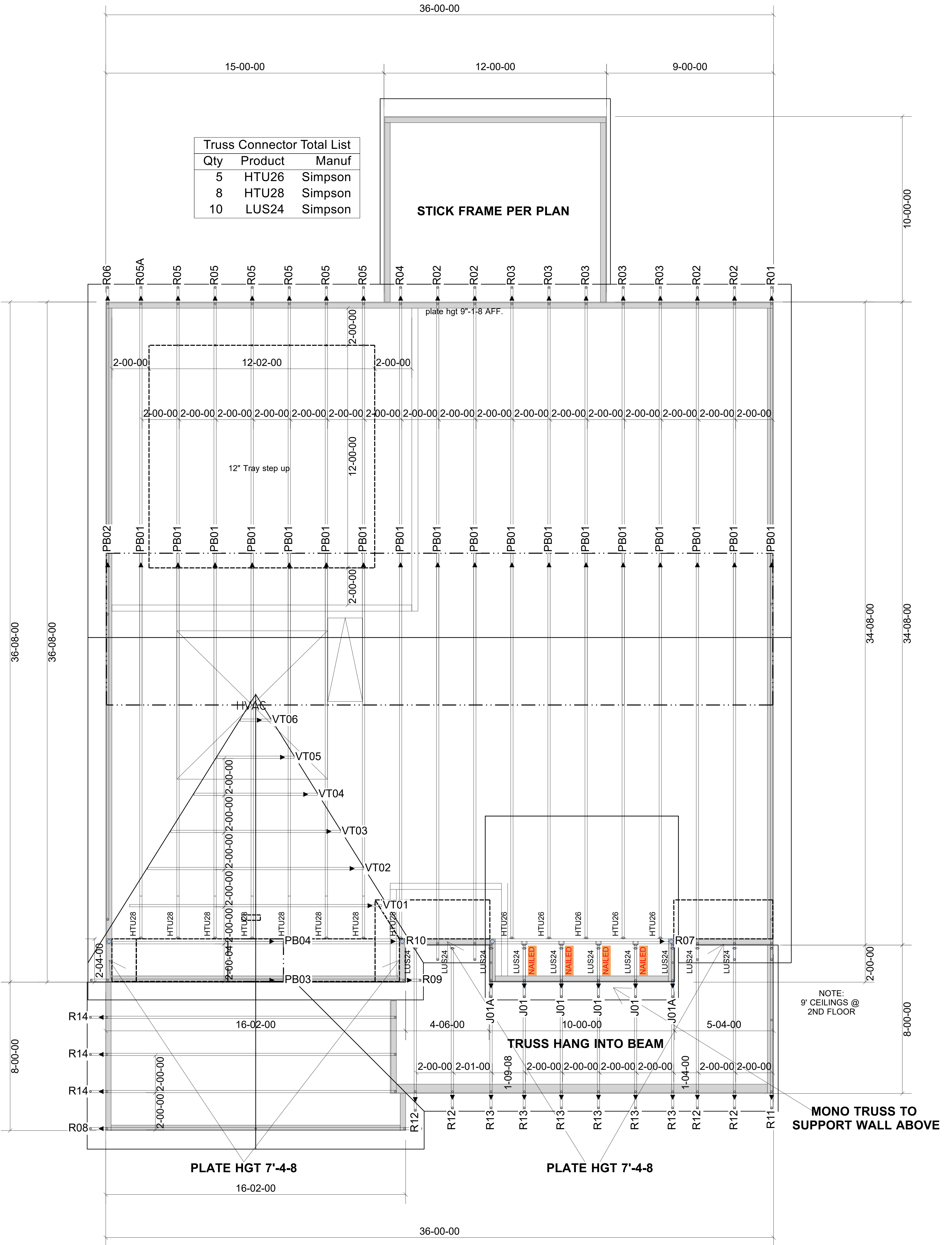


WARNING! Long span trusses, 60' or greater in length, require extreme care and experience for proper and safe handling and installation. For general handling and installation guidance, see the "Guide to Good Practice for Handling, Installing, Restraining & Bracing of Metal Plate Connected Wood Trusses" (BCS1), JOINTLY PRODUCED BY SBCA and TPI. For project specific guidance, consult with a registered design professional. ATLANTIC assumes no responsibility for the handling, installation or bracing of trusses.



▲ = LEFT END OF TRUSS

NOT FOR CONSTRUCTION



Moncks Corner/Easley, SC (800) 475-3999
Sparta, NC (336) 372-2226

REVISIONS:

Client: CAPITOL CITY HOMES, LLC	
Job: LOT 189 CROSSING @ ANDERS	
Plan Information: BRAXTON-C	
NOT TO SCALE	Date: / /
Drawn By: AMH	Job #: 22-1365-R01 Sales Rep: KYLE GIBSON Phone:

ROOF