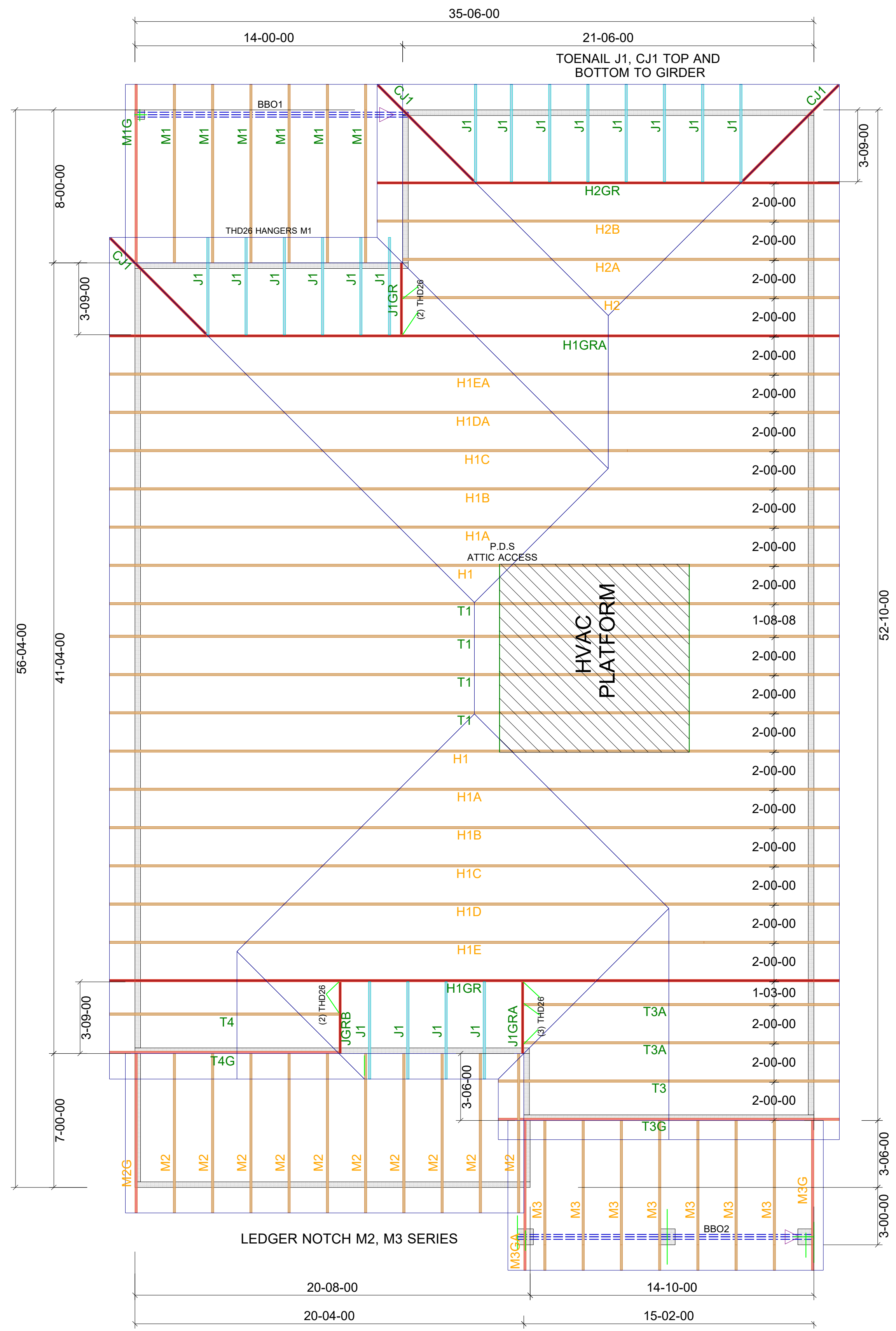


NOTES:

- 1'-4" TOP CHORD (TYP.)
- EXTERIOR DIMENSIONS ARE FROM FRAME TO FRAME
- FRONT PORCH BEAMS ARE DROPPED SUPPLIED BY OTHERS
- REAR PORCH BEAMS ARE DROPPED AND SUPPLIED BY OTHERS



GENERAL NOTES:
 - DO NOT CUT, DRILL, NOTCH OR MODIFY TRUSSES WITHOUT APPROVAL FROM A CARTER LUMBER TRUSS ASSOCIATE
 - TRUSSES ARE SPACED AT 24" O/C UNLESS NOTED OTHERWISE
 - REFER TO INDIVIDUAL TRUSS DESIGN DRAWINGS FOR THE LOCATION OF LATERAL BRACING AND MULTI-PLY CONNECTION REQUIREMENTS
 - PER AND TPI 1, 2002 THE TRUSS ENGINEER IS RESPONSIBLE FOR TRUSS TO TRUSS CONNECTIONS AND TRUSS PLY TO PLY CONNECTIONS
 - THIS TRUSS PLACEMENT PLAN RECOMMENDS TRUSS TO BEARING CONNECTIONS AND TRUSS TO BEAM CONNECTIONS WHICH SHALL BE REVIEWED BY THE BUILDING DESIGNER
 - IT IS THE RESPONSIBILITY OF THE BUILDING DESIGNER TO RESOLVE ALL ROOF FORCES ADEQUATELY TO THE FOUNDATION

**747 OLD HARGRAVE RD
 LEXINGTON, NC 27295**

QTY	MARK	TYPE
.	.	.
.	.	.
.	.	.
.	.	.
.	.	.
.	.	.
.	.	.
.	.	.
.	.	.
.	.	.



Project	3030 - A		
Customer	Adams Homes		
Job Name	L25 CAMERON WOODS		
Options	GARAGE LEFT		
Revision			
Ship Date			
Scale	Drawn Date	Drawn By	Order No.
NTS	12/7/2021	SB	21110326

Note: All dimensions shown 00-00-00 are in Feet-Inches-Sixteenths
 THIS LAYOUT IS INTENDED FOR THE PURPOSE OF TRUSS LOCATION AND PLACEMENT ONLY.
 REFER TO THE BUILDING PLANS FOR THE ACTUAL BUILDING CONSTRUCTION.