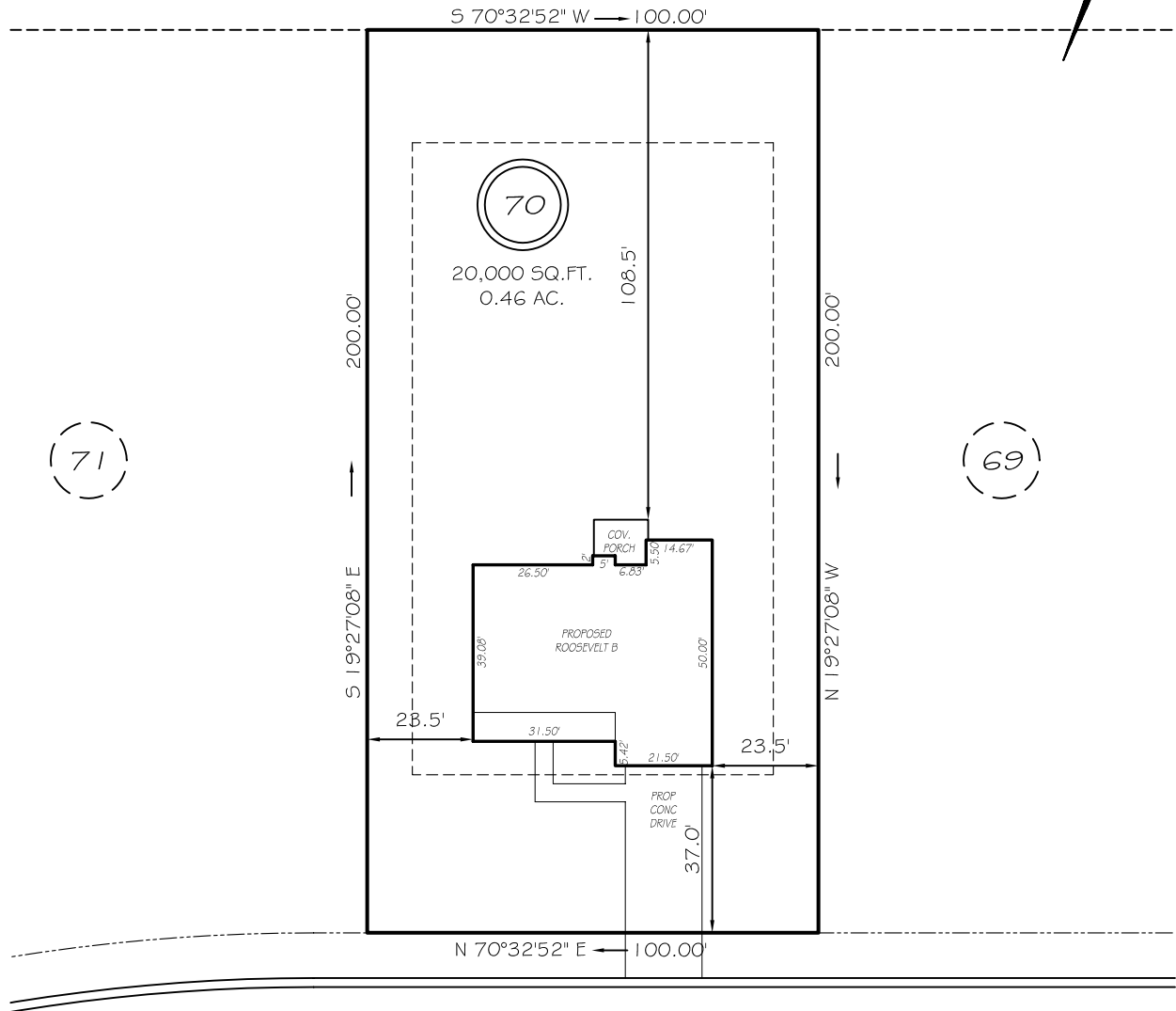


I, MICHAEL P. GRIFFIN, certify that under my direction and supervision this map was drawn from an actual field survey; that the error of closure of the survey as calculated by coordinates is 1: 10,000+; that the area shown hereon was calculated by coordinates.

Witness my hand and seal this day of MONTH 2022.

BK 2021 Pg 159-161  
HARNETT CO. REGISTRY

N/F  
WEST DOUGLAS H  
& WEST DALLAS M  
DB 3255 PG 134  
PB 2014 PG 286



COUNTRYSIDE DRIVE  
50' RW (PRIVATE & UTILITY ACCESS)

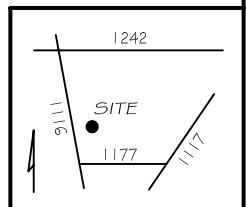
SETBACKS

FRONT	35'
REAR	25'
SIDE	10'
CORNER	20'

REVISION: ADD FP 2/25/22  
REVISION: NEW PLANS 2/22/22

LEGEND

EIP	EXISTING IRON PIPE	FES	FLARED END SECTION
IPS	IRON PIPE SET	WM	WATER METER
R/W	RIGHT OF WAY	CO	CLEAN OUT
N/F	NOW OR FORMERLY	FH	FIRE HYDRANT
EIS	EXISTING IRON STAKE	CB	CATCH BASIN



**P R E L I M I N A R Y**  
NOT FOR RECORDATION,  
SALES OR CONVEYANCE



GRIFFIN LAND SURVEYING, INC.

P. O. BOX 148  
FUQUAY-VARINA, NC 27526  
(919) - 567 - 1963

**PLOT PLAN**  
FOR  
**H & H HOMES**

**OAKMONT**  
**LOT 70**  
COUNTRYSIDE DRIVE  
NORTH CAROLINA  
HARNETT COUNTY BARBECUE TOWNSHIP

DRAWN BY NMF

DATE 2/15/22

CHECKED BY MPG

SCALE 1" = 40'