

THIS LAYOUT IS TO BE USED AS A TRUSS PLACEMENT GUIDE ONLY.  
PLEASE REFER TO BUILDING PLANS FOR BUILDING CONSTRUCTION AND DETAILS,  
SUCH AS PLUMBING OR DUCT DROPS.

PROPOSED DESIGN-  
NOT FOR  
CONSTRUCTION

Job #

Q-2200570

Callahan Resd  
County Line Rd

Date Quoted:

Designer:

Katie Bailey

Pride Custom Homes, Inc

P.O. Box 4178

Pinehurst, NC

28374

Peak Truss  
Builders, LLC

PO Box 340, New Hill, NC 27562



Notes:  
1. Exterior dimensions shown are assumed to be:  
 Out-to-out of stud  
 Out-to-out of sheathing  
2. Adjust truss locations as needed for plumbing and mechanical clearance. Unless otherwise noted, trusses may be shifted as long as O.C. spacing shown is not exceeded.  
3. Do not cut, drill, or otherwise damage any part of any truss without prior approval from Peak Truss.  
4. Do not approve drawings if any information herein is unclear. Once ordered trusses will be fabricated as approved.  
5. Please contact Peak Truss Builders with any questions. We are available to help any way we can. We can be reached at 919-545-5555 or sales@peaktruss.com

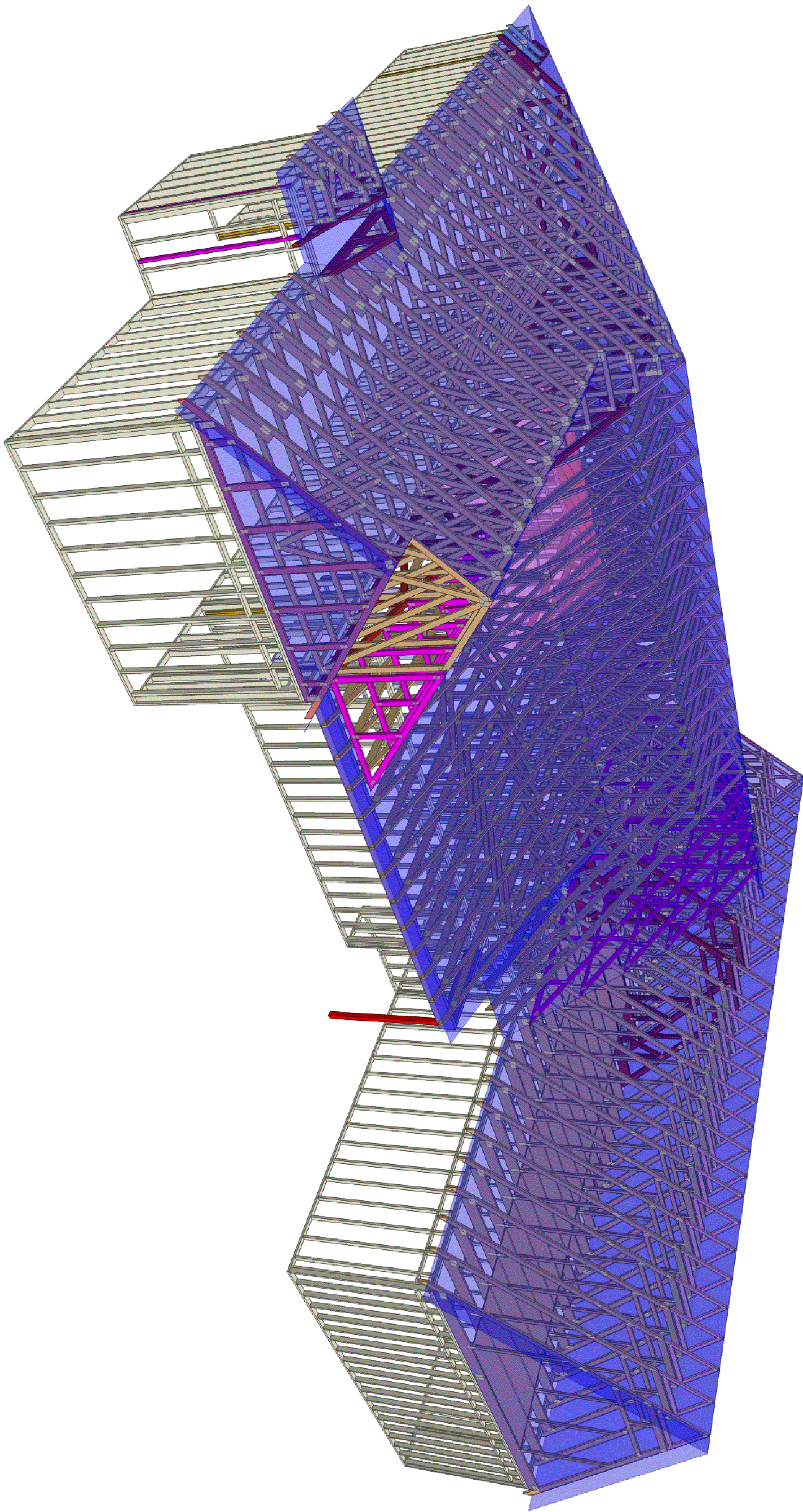
Roof Truss Loading per 2018 NC Residential Code  
Top Chord Live Load 20# PSF  
Top Chord Dead Load 10# PSF  
Bottom Chord Live Load 0# PSF  
Bottom Chord Dead Load 10# PSF

Trusses are designed for additional storage load wherever a 42"x24" box will fit between the webs.  
△ - This symbol denotes left end of truss as shown on truss drawings  
● - Approximate location of toilet drop. Builder please confirm.

Truss connections by others:  
N - Nailed  
L - Ledger

CALLAHAN RESD  
ROOF TRUSSES  
2'OC, 1'OH

Truss Connector Total List		
Manuf	Product	Qty
USP	JUS26	9
USP	THD28-2	1



**Peak Truss  
Builders, LLC**

PO Box 340, New Hill, NC 27562

Pride Custom Homes, Inc  
P.O. Box 4178  
Pinehurst, NC  
28374

Date Quoted:

Designer:  
**Katie Bailey**

Callahan Resd  
County Line Rd

Job #

**Q-2200570**