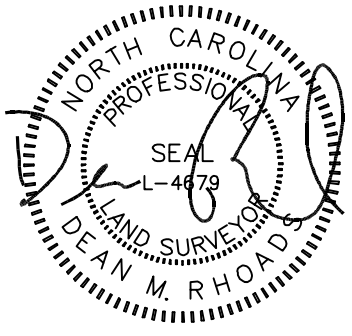


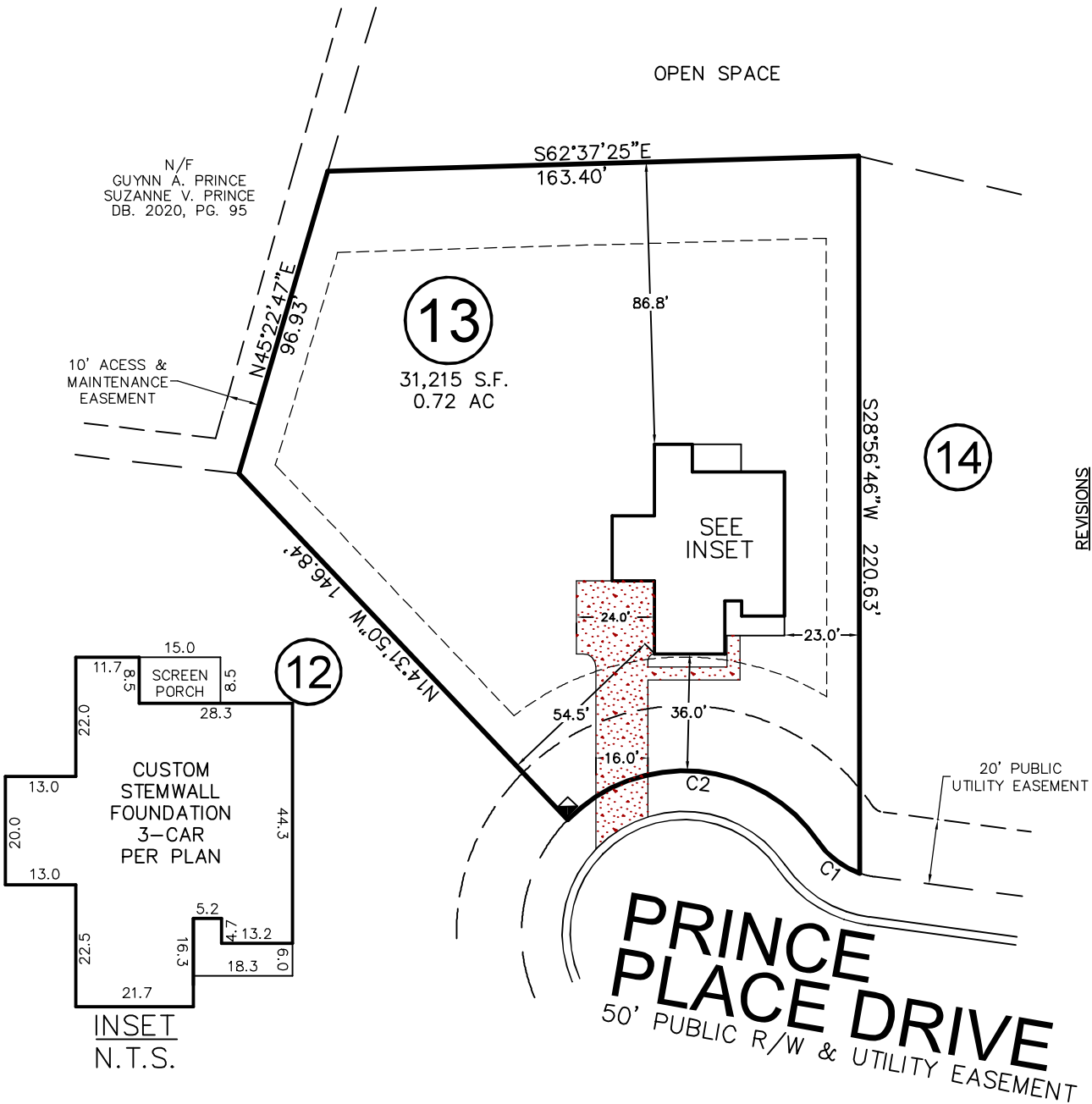
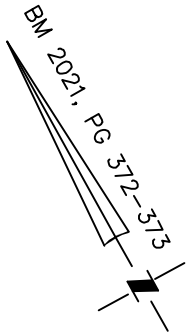
VICINITY MAP
Not To Scale



IMPERVIOUS SURFACE AREA	
DESCRIPTION	AREA
HOUSE w/ PORCH	2,496 S.F.
SC PORCH/HVAC	135 S.F.
DRIVEWAY & WALKS	1,338 S.F.
TOTAL (PROPOSED)=	3,969 S.F.

SETBACKS: (PB 2021, PG 372)

FRONT: 35' FROM R/W
REAR: 25'
SIDE: 10'
CORNER LOT SIDE: 20'



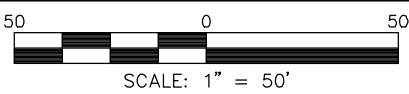
REVISIONS		
REV. #	DATE	COMMENT
REV. 1	12/16/22	3-CAR GARAGE ADDED, HOUSE LOC SHIFTED

CURVE	RADIUS	ARC LENGTH	CH LENGTH	CH BEARING
C1	25.00'	16.19'	15.91'	S23°44'02"E
C2	50.00'	88.50'	77.39'	N55°52'40"W

THIS DRAWING DOES NOT REFLECT AS-BUILT INFORMATION

PRELIMINARY PLAT
NOT FOR RECORDATION, CONVEYANCES, OR SALES.

THIS PROPERTY MAY BE SUBJECT TO ANY AND ALL APPLICABLE DEED RESTRICTIONS, EASEMENTS, RIGHT-OF-WAY, UTILITIES AND RESTRICTIVE COVENANTS WHICH MAY BE OF RECORD OR IMPLIED



HOUSE LOCATION PLOT PLAN

FOR
ROYAL ELLA COURT
LOT 13, PRINCE PLACE, PHASE 1
Hectors Creek Township, Harnett County, North Carolina

PROPERTY OF: DAVIDSON HOMES

PLAT BOOK 2021 PAGE 372-373 DEED REFERENCE _____

RESIDENTIAL LAND SERVICES, PLLC.

1917 Evans Road
Cary, North Carolina 27513
Phone (919) 378-9316
Firm License # P-0873

DRAWN BY: JSH

DATE: DECEMBER 13, 2021