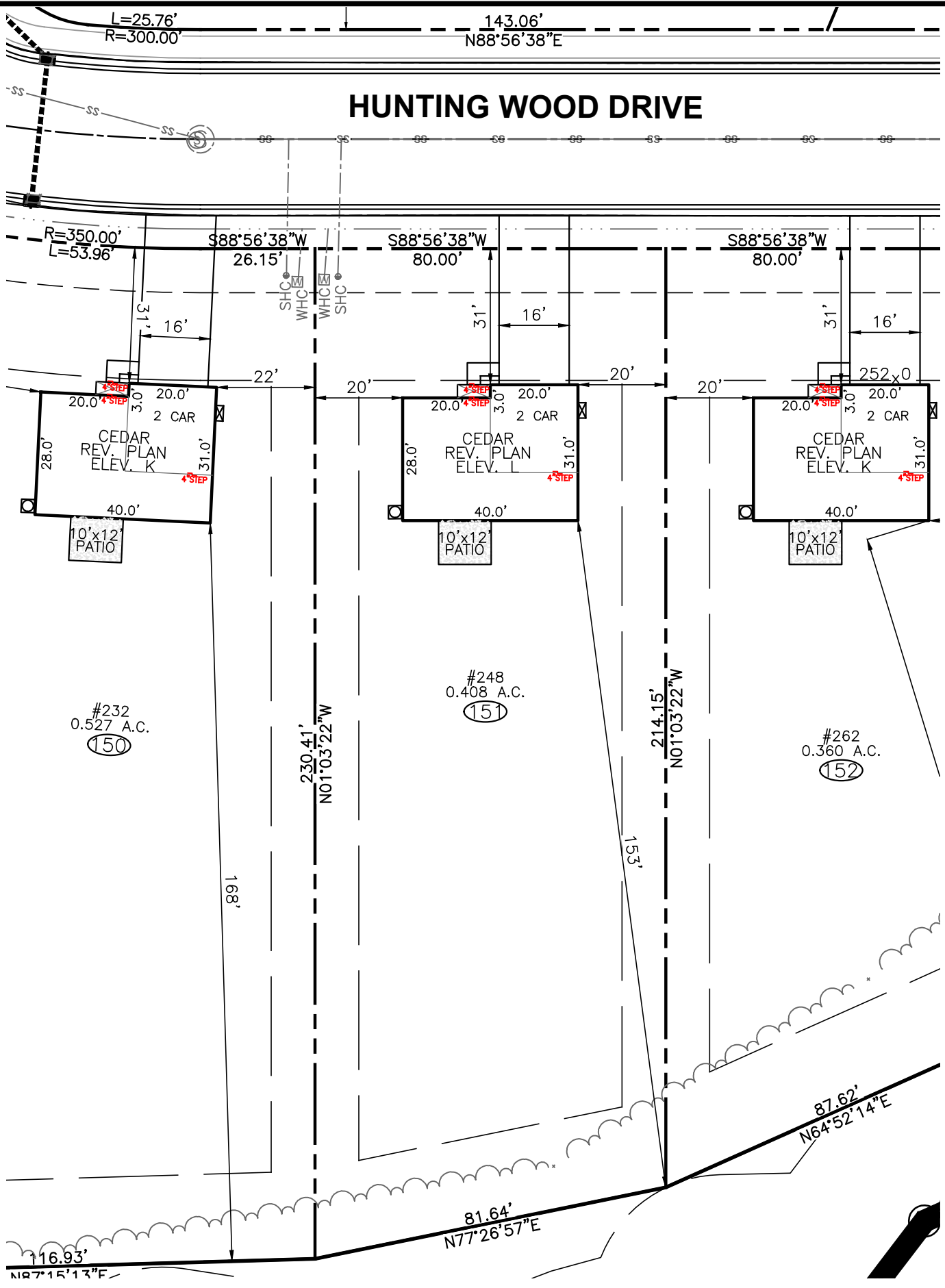


HUNTING WOOD DRIVE



#232
0.527 A.C.
(150)

#248
0.408 A.C.
(151)

#262
0.360 A.C.
(152)

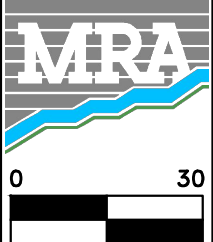
FRONT	30' MIN.
SIDE	10' MIN. (20' CORNER)
REAR	20' MIN.
IMPERVIOUS	1,846 S.F. (10%)

DRIVEWAY	616 SF
LEADWALK	28 SF
PUBLIC WALK	N/A SF
SOD	16,408 SF
WHC	43 LF
SHC	42 LF
PATIO	120 SF
HSE FACING	N. EAST

- LEGEND**
- ELEC. METER
 - A/C UNIT



BUILDER
RYAN HOMES
5734 TRINITY ROAD, SUITE 200
RALEIGH, NC 27607
PHONE: 919-233-0793



MORRIS & RITCHIE ASSOCIATES OF NC, PC
ENGINEERS, ARCHITECTS, PLANNERS, SURVEYORS AND LANDSCAPE ARCHITECTS
5605 CHAPEL HILL ROAD, SUITE 112
RALEIGH, NC 27607 PHONE:
984-200-2103
FIRM LICENSES C-4182 & G-492

www.mragta.com

SITE PLAN
FOR
QUAIL GLEN
PHASE 6
LOT 151 #248 HUNTING WOOD DRIVE
BLACK RIVER TOWNSHIP
HARNETT COUNTY NORTH CAROLINA

SCALE: 1"=30' DATE: JANUARY 26, 2022 DRAWN BY: JOE C. DESIGN BY: JOE C. REVIEW BY: DARYN A. JOB NO.: 20314