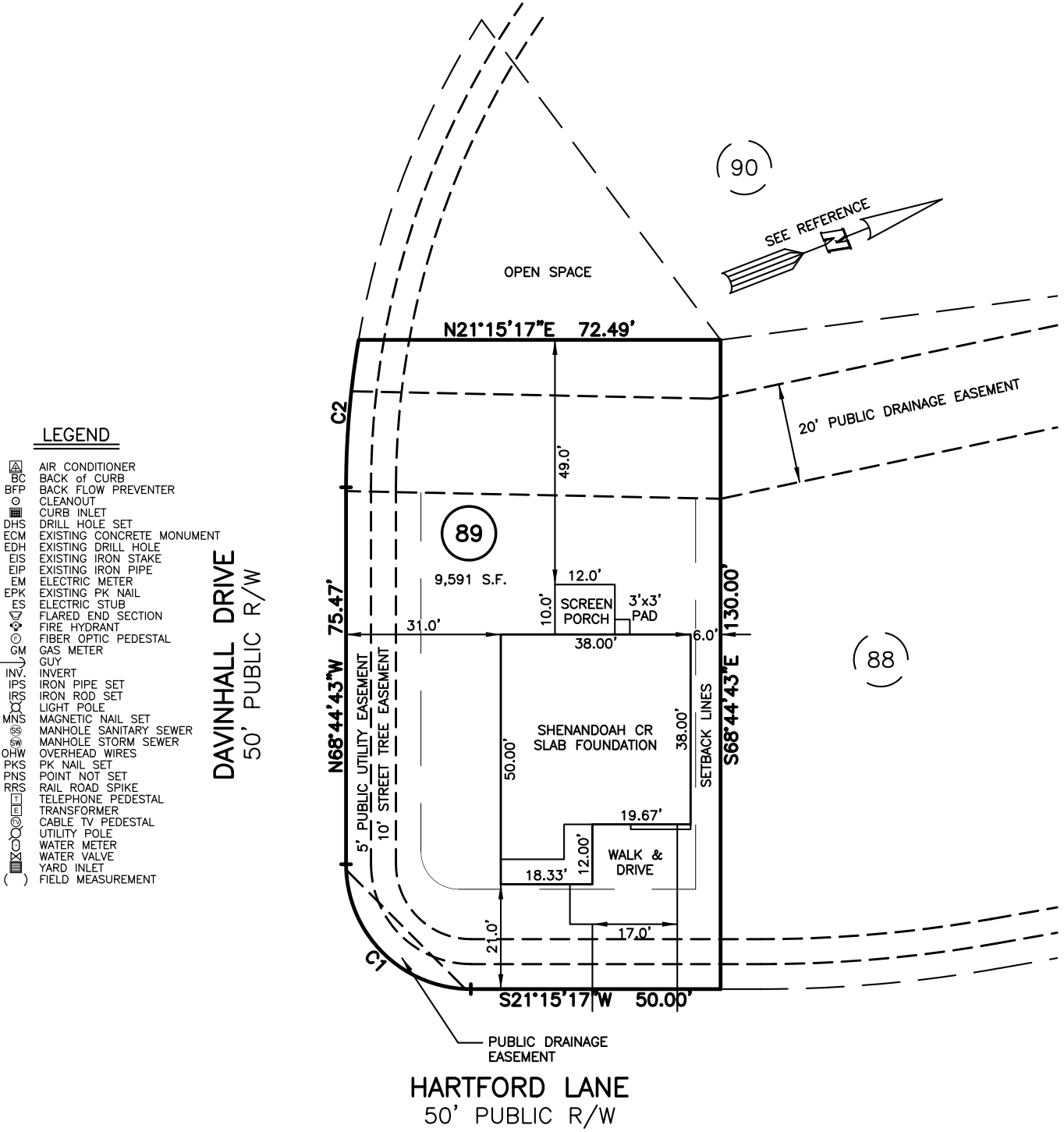


PLOT PLAN FOR
MATTAMY HOMES
 HARTFORD LANE
 LOT 89, PROVIDENCE CREEK PHASE 2
 HECTORS CREEK AND BLACK CREEK TOWNSHIP, HARNETT COUNTY, NORTH CAROLINA



LEGEND

- △ AIR CONDITIONER
- BC BACK of CURB
- BFP BACK FLOW PREVENTER
- CLEANOUT
- CURB INLET
- DHS DRILL HOLE SET
- ECM EXISTING CONCRETE MONUMENT
- EDH EXISTING DRILL HOLE
- EIS EXISTING IRON STAKE
- EIP EXISTING IRON PIPE
- EM ELECTRIC METER
- EPK EXISTING PK NAIL
- ES ELECTRIC STUB
- FLARED END SECTION
- FIRE HYDRANT
- FIBER OPTIC PEDESTAL
- GAS METER
- GUY
- INVERT
- IRPS IRON PIPE SET
- IRRS IRON ROD SET
- LS LIGHT POLE
- MNS MAGNETIC NAIL SET
- MSAN MANHOLE SANITARY SEWER
- MSST MANHOLE STORM SEWER
- OHV OVERHEAD WIRES
- PKS PK NAIL SET
- PNS POINT NOT SET
- RSS RAIL ROAD SPIKE
- TRP TELEPHONE PEDESTAL
- TRANSFORMER
- CABLE TV PEDESTAL
- UTILITY POLE
- WATER METER
- WATER VALVE
- YARD INLET
- FIELD MEASUREMENT

CURVE	RADIUS	DELTA	ARC	CHORD BRG	CHORD
C1	25.00'	90°00'00"	39.27'	S66°15'17"W	35.36'
C2	175.00'	9°42'49"	29.67'	S63°53'18"E	29.63'

SETBACK INFO

FRONT: _____ 20'
 REAR: _____ 15'
 SIDES: _____ 5'
 CORNER SIDE: _____ 15'

REFERENCES:

BM 2022 PGS 19-23



SCALE: 1" = 30'

NOTES

1. THIS SURVEY SUBJECT TO ANY FACTS THAT MAY BE DISCLOSED BY A FULL AND ACCURATE TITLE SEARCH.
2. THIS MAP MAY NOT BE A CERTIFIED SURVEY AND HAS NOT BEEN REVIEWED BY A LOCAL GOVERNMENT AGENCY FOR COMPLIANCE WITH ANY APPLICABLE LAND DEVELOPMENT REGULATIONS AND HAS NOT BEEN REVIEWED FOR COMPLIANCE WITH RECORDING REQUIREMENTS FOR PLATS.

PLOT PLAN
 PRELIMINARY PLAT- NOT FOR RECORDATION,
 CONVEYANCE OR SALES

REV CODE: 1.FLIP, 2.PLAN, 3.ROTATE, 4.MOVE, 5.SS
 6.SEVERAL OF ABOVE, 7.LAND FEATURE, 8. OTHER

DATE: JAN. 24, 2022

F.B. _____

RWK, PA

ENGINEERING ~ SURVEYING

CORPORATE LICENSE: C-1771
 101 W. MAIN ST., SUITE 202
 GARNER, NC 27529
 PHONE (919) 779-4854
 FAX (919) 779-4056