

Trenco

818 Soundside Rd
Edenton, NC 27932

Re: 24090030-A
1099 Lloyd Stewart-Roof-Isabelle GRH

The truss drawing(s) referenced below have been prepared by Truss Engineering Co. under my direct supervision based on the parameters provided by Carter Components (Sanford, NC)).

Pages or sheets covered by this seal: 175173383 thru 175173385

My license renewal date for the state of North Carolina is December 31, 2025.

North Carolina COA: C-0844



July 28, 2025

Gilbert, Eric

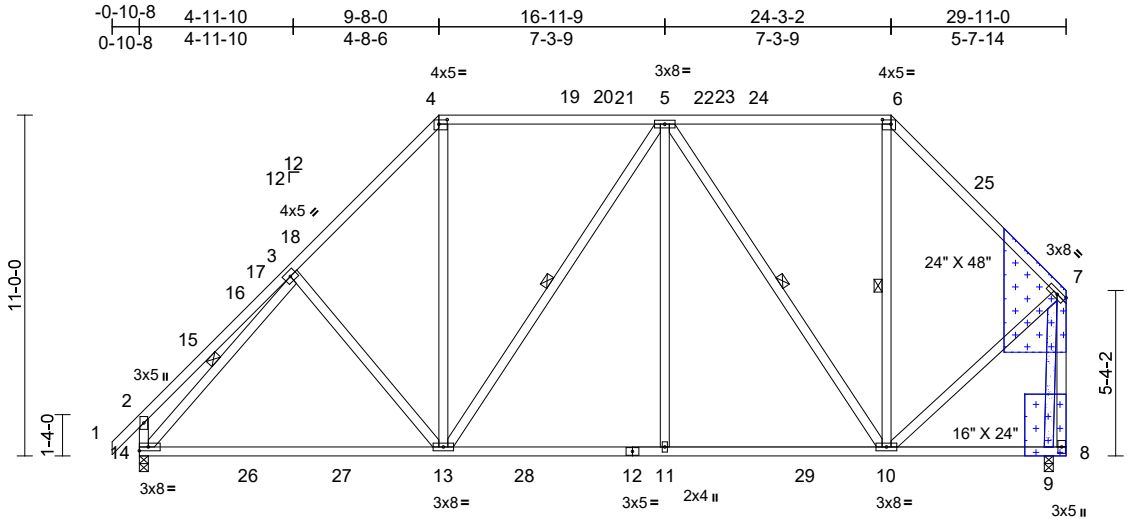
IMPORTANT NOTE: The seal on these truss component designs is a certification that the engineer named is licensed in the jurisdiction(s) identified and that the designs comply with ANSI/TPI 1. These designs are based upon parameters shown (e.g., loads, supports, dimensions, shapes and design codes), which were given to MiTek or TRENCO. Any project specific information included is for MiTek's or TRENCO's customers file reference purpose only, and was not taken into account in the preparation of these designs. MiTek or TRENCO has not independently verified the applicability of the design parameters or the designs for any particular building. Before use, the building designer should verify applicability of design parameters and properly incorporate these designs into the overall building design per ANSI/TPI 1, Chapter 2.

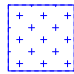
| | | | | | | |
|------------|-------|----------------|-----|-----|--------------------------------------|-----------|
| Job | Truss | Truss Type | Qty | Ply | 1099 Lloyd Stewart-Roof-Isabelle GRH | I75173383 |
| 24090030-A | D1 | Piggyback Base | 3 | 1 | Job Reference (optional) | |


Carter Components (Sanford, NC), Sanford, NC - 27332,
Run: 8.73 E Dec 14 2023 Print: 8.730 E Dec 14 2023 MiTek Industries, Inc. Mon Jul 28 10:11:39
Page: 1

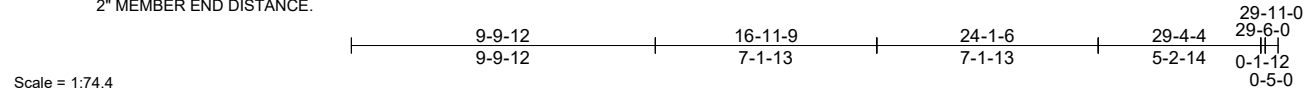
REPAIR:
ID:EQem0T6BvicXyQaOn?XB?ayaiq?-OG_qBBD5ed0CbuA5SrvA5vaY8WgWULchqkvagyZfJ

RIGHT END CANTILEVER BY 0-5-0




ATTACH 1/2" PLYWOOD OR OSB GUSSET (15/32" RATED SHEATHING 32/16 EXP 1) TO EACH FACE OF TRUSS WITH (0.131" X 2.5" MIN.) NAILS PER THE FOLLOWING NAIL SCHEDULE: 2 X 4'S - 3 ROWS: SPACED @ 4" O.C. NAILS TO BE DRIVEN FROM BOTH FACES. STAGGER SPACING FROM FRONT TO BACK FACE FOR A NET 2" O.C. SPACING IN EACH COVERED TRUSS MEMBER. USE 2" MEMBER END DISTANCE.


INSTALL 2 X 4 SP NO.2 CUT TO FIT TIGHT.



| | | | | | | | | | | | | |
|--|-------|-----------------|-----------------|------------|------|-------------|-------|-------|--------|-------|----------------|-------------|
| Scale = 1:74.4 | | | | | | | | | | 0-5-0 | | |
| Plate Offsets (X, Y): [4:0-3-4,0-1-12], [6:0-3-4,0-1-12], [7:0-3-7,Edge] | | | | | | | | | | | | |
| Loading | (psf) | Spacing | 2-0-0 | CSI | | DEFL | in | (loc) | l/defl | L/d | PLATES | GRIP |
| TCLL (roof) | 20.0 | Plate Grip DOL | 1.15 | TC | 0.92 | Vert(LL) | -0.29 | 13-14 | >999 | 240 | MT20 | 244/190 |
| Snow (Pf) | 20.0 | Lumber DOL | 1.15 | BC | 0.73 | Vert(CT) | -0.49 | 13-14 | >713 | 180 | | |
| TCDL | 10.0 | Rep Stress Incr | YES | WB | 0.76 | Horz(CT) | 0.04 | 9 | n/a | n/a | | |
| BCLL | 0.0* | Code | IRC2021/TPI2014 | Matrix-MSH | | | | | | | | |
| BCDL | 10.0 | | | | | | | | | | | |
| | | | | | | | | | | | Weight: 233 lb | FT = 20% |

LUMBER

TOP CHORD 2x4 SP No.2 *Except* 4-6:2x4 SP No.1

BOT CHORD 2x4 SP No.1 *Except* 12-8:2x4 SP No.2

WEBS 2x4 SP No.3

BRACING

TOP CHORD Structural wood sheathing directly applied or 2-2-0 oc purlins, except end verticals, and 2-0-0 oc purlins (2-2-0 max.): 4-6.

BOT CHORD Rigid ceiling directly applied or 6-0-0 oc bracing.

WEBS 1 Row at midpt 5-13, 5-10, 6-10, 3-14

REACTIONS (lb/size) 9=1201/0-3-8, 14=1230/0-3-8

Max Horiz 14=329 (LC 11)

Max Uplift 9=-105 (LC 15), 14=-132 (LC 14)

Max Grav 9=1432 (LC 46), 14=1417 (LC 5)

FORCES (lb) - Max. Comp./Max. Ten. - All forces 250 (lb) or less except when shown.

TOP CHORD 2-15=-499/143, 15-16=-416/144, 16-17=-370/162, 3-17=-369/166, 3-18=-1501/202, 4-18=-1411/240, 4-19=-1060/237, 19-20=-1060/237, 20-21=-1060/237, 5-21=-1060/237, 5-22=-715/221, 22-23=-715/221, 23-24=-715/221, 6-24=-715/221, 6-25=-949/208, 7-25=-999/186, 2-14=-481/174, 7-8=-303/69

BOT CHORD 14-26=-277/1136, 26-27=-277/1136, 13-27=-277/1136, 13-28=-200/1273, 12-28=-200/1273, 11-12=-200/1273, 11-29=-200/1273, 10-29=-200/1273

WEBS 4-13=-37/655, 5-13=-325/172, 5-11=0/393, 5-10=-925/169, 6-10=-36/327, 3-14=-1163/81, 7-10=-108/1081, 7-9=-1271/205

- Wind: ASCE 7-16; Vult=130mph (3-second gust) Vasd=103mph; TCDL=6.0psf; BCDL=6.0psf; h=25ft; Cat. II; Exp B; Enclosed; MWFRS (envelope) exterior zone and C-C Exterior(2E) -0-10-8 to 2-1-8, Interior (1) 2-1-8 to 5-5-1, Exterior(2R) 5-5-1 to 13-10-15, Interior (1) 13-10-15 to 20-0-3, Exterior(2R) 20-0-3 to 26-9-4, Exterior(2E) 26-9-4 to 29-9-4 zone; cantilever left and right exposed ; end vertical left and right exposed;C-C for members and forces & MWFRS for reactions shown; Lumber DOL=1.60 plate grip DOL=1.60
- TCLL: ASCE 7-16; Pr=20.0 psf (roof LL: Lum DOL=1.15 Plate DOL=1.15); Pf=20.0 psf (Lum DOL=1.15 Plate DOL=1.15); Is=1.0; Rough Cat B; Fully Exp.; Ce=0.9; Cs=1.00; Ct=1.10
- Unbalanced snow loads have been considered for this design.
- This truss has been designed for greater of min roof live load of 12.0 psf or 1.00 times flat roof load of 20.0 psf on overhangs non-concurrent with other live loads.
- Provide adequate drainage to prevent water ponding.
- This truss has been designed for a 10.0 psf bottom chord live load nonconcurrent with any other live loads.
- * This truss has been designed for a live load of 20.0psf on the bottom chord in all areas where a rectangle 3-06-00 tall by 2-00-00 wide will fit between the bottom chord and any other members, with BCDL = 10.0psf.
- One RT4 MiTek connectors connect truss to bearing walls due to UPLIFT at jt(s) 14 and 9. This connection is for uplift only and does not consider lateral forces.
- N/A
- Graphical purlin representation does not depict the size or the orientation of the purlin along the top and/or bottom chord.

LOAD CASE(S) Standard



July 28,2025

NOTES

1) Unbalanced roof live loads have been considered for this design.

WARNING - Verify design parameters and READ NOTES ON THIS AND INCLUDED MITEK REFERENCE PAGE MII-7473 rev. 1/2/2023 BEFORE USE.

Design valid for use only with MiTek® connectors. This design is based only upon parameters shown, and is for an individual building component, not a truss system. Before use, the building designer must verify the applicability of design parameters and properly incorporate this design into the overall building design. Bracing indicated is to prevent buckling of individual truss web and/or chord members only. Additional temporary and permanent bracing is always required for stability and to prevent collapse with possible personal injury and property damage. For general guidance regarding the fabrication, storage, delivery, erection and bracing of trusses and truss systems, see **ANSI/TPI1 Quality Criteria and DSB-22** available from Truss Plate Institute (www.tpinst.org) and **BCSI Building Component Safety Information** available from the Structural Building Component Association (www.sbcacomponents.com)



ENGINEERING BY
TRENCO
A MiTek Company

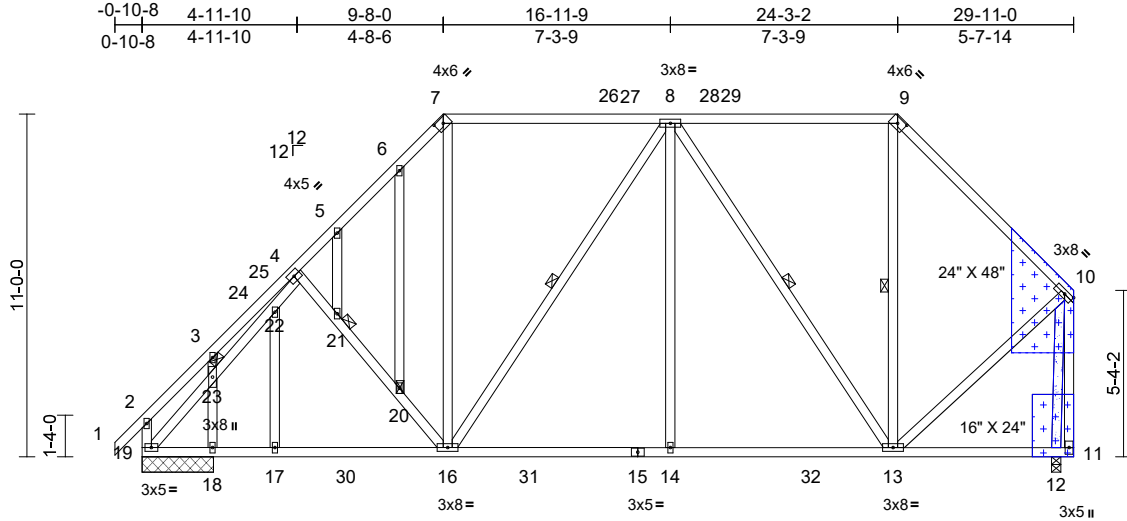
818 Soundside Road
Edenton, NC 27932

| | | | | | |
|--------------------------|-------|----------------|-----|-----|--------------------------------------|
| Job | Truss | Truss Type | Qty | Ply | 1099 Lloyd Stewart-Roof-Isabelle GRH |
| 24090030-A | D1SE | Piggyback Base | 1 | 1 | 175173384 |
| Job Reference (optional) | | | | | |

Carter Components (Sanford, NC), Sanford, NC - 27332,
REPAIR:
RIGHT END CANTILEVER BY 0-5-0

Run: 8.73 E Dec 14 2023 Print: 8.730 E Dec 14 2023 MiTek Industries, Inc. Mon Jul 28 10:19:48
ID:11W0bn4xNhMqI6Q?faVw9yaiq1-2Xb41k9SEAlgOCdG9lh4yEtlk2wjzKpVzXqnGytZxf

Page: 1



ATTACH 1/2" PLYWOOD OR OSB GUSSET (15/32" RATED SHEATHING 32/16 EXP 1)
TO EACH FACE OF TRUSS WITH (0.131" X 2.5" MIN.) NAILS PER THE FOLLOWING NAIL SCHEDULE:
2 X 4'S - 3 ROWS: SPACED @ 4" O.C. NAILS TO BE DRIVEN FROM BOTH FACES. STAGGER SPACING
FROM FRONT TO BACK FACE FOR A NET 2" O.C. SPACING IN EACH COVERED TRUSS MEMBER. USE
2" MEMBER END DISTANCE.

INSTALL 2 X 4 SP NO.2
CUT TO FIT TIGHT.

Scale = 1:74

Plate Offsets (X, Y): [7:0-0-1,Edge], [9:0-0-1,Edge], [10:0-3-7,Edge]

| Loading | (psf) | Spacing | 2-0-0 | CSI | DEFL | in | (loc) | I/defl | L/d | PLATES | GRIP | |
|----------------|-------|-----------------|-----------------|------------|------|----------|-------|--------|------|--------|----------|---------|
| TCLL (roof) | 20.0 | Plate Grip DOL | 1.15 | TC | 0.90 | Vert(LL) | -0.10 | 13-14 | >999 | 240 | MT20 | 244/190 |
| Snow (Pf) | 20.0 | Lumber DOL | 1.15 | BC | 0.69 | Vert(CT) | -0.17 | 13-14 | >999 | 180 | | |
| TCDL | 10.0 | Rep Stress Incr | YES | WB | 0.70 | Horz(CT) | 0.04 | 12 | n/a | n/a | | |
| BCLL | 0.0* | Code | IRC2021/TPI2014 | Matrix-MSH | | | | | | | | |
| BCDL | 10.0 | | | | | | | | | | | |
| Weight: 259 lb | | | | | | | | | | | FT = 20% | |

LUMBER
TOP CHORD 2x4 SP No.2 *Except* 7-9:2x4 SP No.1
BOT CHORD 2x4 SP No.2
WEBS 2x4 SP No.2 *Except*
19-2,11-10,16-4,13-10,10-12:2x4 SP No.3
OTHERS 2x4 SP No.3

BRACING
TOP CHORD Structural wood sheathing directly applied or
2-2-0 oc purlins, except end verticals, and
2-0-0 oc purlins (3-9-12 max.): 7-9.
BOT CHORD Rigid ceiling directly applied or 10-0-0 oc
bracing, Except:
6-0-0 oc bracing: 12-13,11-12.
WEBS 1 Row at midpt 8-16, 9-13, 4-19, 8-13
JOINTS 1 Brace at Jt(s): 20,
21

REACTIONS (lb/size) 12=1168/0-3-8, 18=456/2-3-8,
19=807/2-3-8
Max Horiz 19=329 (LC 11)
Max Uplift 12=-104 (LC 15), 18=-91 (LC 14),
19=-47 (LC 14)
Max Grav 12=1393 (LC 46), 18=540 (LC 5),
19=921 (LC 47)

FORCES (lb) - Max. Comp./Max. Ten. - All forces 250
(lb) or less except when shown.
TOP CHORD 3-24=-256/148, 4-5=-1472/169,
5-6=-1488/208, 6-7=-1434/236,
7-26=-1095/230, 26-27=-1095/230,
8-27=-1095/230, 8-28=-790/201,
28-29=-790/201, 9-29=-790/201,
9-10=-1078/192, 10-11=-307/63
BOT CHORD 18-19=-250/1060, 17-18=-250/1060,
17-30=-250/1060, 16-30=-250/1060,
16-31=-196/1308, 15-31=-196/1308,
14-15=-196/1308, 14-32=-196/1308,
13-32=-196/1308

WEBS 8-14=0/432, 7-16=-54/589, 8-16=-399/154,
9-13=-32/307, 19-23=-1145/10,
22-23=-1351/0, 4-22=-1309/32,
10-13=-107/1113, 8-13=-949/163,
18-23=-476/102, 10-12=-1350/208

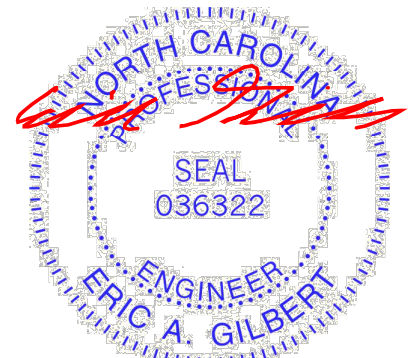
NOTES

- Unbalanced roof live loads have been considered for this design.
- Wind: ASCE 7-16; Vult=130mph (3-second gust) Vasd=103mph; TCDL=6.0psf; BCDL=6.0psf; h=25ft; Cat. II; Exp B; Enclosed; MWFRS (envelope) exterior zone and C-C Exterior(2E) -0-10-8 to 2-3-2, Interior (1) 2-3-2 to 5-5-1, Exterior(2R) 5-5-1 to 13-10-15, Interior (1) 13-10-15 to 20-0-3, Exterior(2R) 20-0-3 to 26-9-4, Exterior(2E) 26-9-4 to 29-9-4 zone; cantilever left and right exposed; end vertical left and right exposed; C-C for members and forces & MWFRS for reactions shown; Lumber DOL=1.60 plate grip DOL=1.60
- Truss designed for wind loads in the plane of the truss only. For studs exposed to wind (normal to the face), see Standard Industry Gable End Details as applicable, or consult qualified building designer as per ANSI/TPI 1.
- TCLL: ASCE 7-16; Pr=20.0 psf (roof LL: Lum DOL=1.15 Plate DOL=1.15); Pf=20.0 psf (Lum DOL=1.15 Plate DOL=1.15); Is=1.0; Rough Cat B; Fully Exp.; Ce=0.9; Cs=1.00; Ct=1.10
- Unbalanced snow loads have been considered for this design.
- This truss has been designed for greater of min roof live load of 12.0 psf or 1.00 times flat roof load of 20.0 psf on overhangs non-concurrent with other live loads.
- Provide adequate drainage to prevent water ponding.
- All plates are 2x4 MT20 unless otherwise indicated.
- Truss to be fully sheathed from one face or securely braced against lateral movement (i.e. diagonal web).
- Gable studs spaced at 2-0-0 oc.
- This truss has been designed for a 10.0 psf bottom

- * This truss has been designed for a live load of 20.0psf on the bottom chord in all areas where a rectangle 3-06-00 tall by 2-00-00 wide will fit between the bottom chord and any other members, with BCDL = 10.0psf.
- One RT4 MiTek connectors recommended to connect truss to bearing walls due to UPLIFT at jt(s) 19, 18, and 12. This connection is for uplift only and does not consider lateral forces.
- N/A

- Graphical purlin representation does not depict the size or the orientation of the purlin along the top and/or bottom chord.

LOAD CASE(S) Standard



July 28, 2025

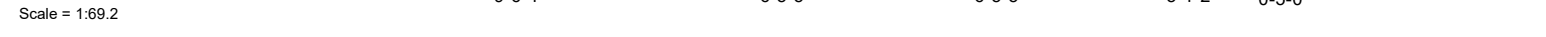
WARNING - Verify design parameters and READ NOTES ON THIS AND INCLUDED MITEK REFERENCE PAGE MII-7473 rev. 1/2/2023 BEFORE USE.

Design valid for use only with MiTek® connectors. This design is based only upon parameters shown, and is for an individual building component, not a truss system. Before use, the building designer must verify the applicability of design parameters and properly incorporate this design into the overall building design. Bracing indicated is to prevent buckling of individual truss web and/or chord members only. Additional temporary and permanent bracing is always required for stability and to prevent collapse with possible personal injury and property damage. For general guidance regarding the fabrication, storage, delivery, erection and bracing of trusses and truss systems, see **ANSI/TPI1 Quality Criteria and DSB-22** available from Truss Plate Institute (www.tpinst.org) and **BCSI Building Component Safety Information** available from the Structural Building Component Association (www.sbcacompnents.com)


ENGINEERING BY
TRENCO
A MITEK COMPANY


818 Soundside Road
Edenton, NC 27932

Carter Components (Sanford, NC), Sanford, NC - 27332, Run: 8.73 E Dec 14 2023 Print: 8.730 E Dec 14 2023 MiTek Industries, Inc. Mon Jul 28 10:26:43 Page: 1
REPAIR: ID:MeOGA53gs466TpdY9SErkyaiq3-ONAy7eAmVg1og_s0zPePHIZC3KVu1g6vX1YlsjyZRA

[illegible]

July 28, 2025

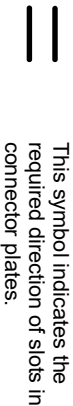
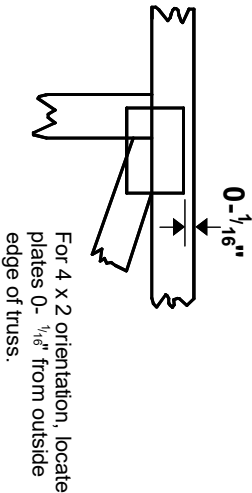
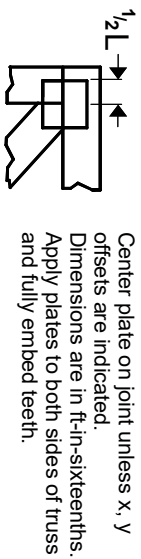
 **WARNING - Verify design parameters and READ NOTES ON THIS AND INCLUDED MITEK REFERENCE PAGE MII-7473 rev. 1/2/2023 BEFORE USE.**
 Design valid for use only with MITek® connectors. This design is based only upon parameters shown, and is for an individual building component, not a truss system. Before use, the building designer must verify the applicability of design parameters and properly incorporate this design into the overall building design. Bracing indicated is to prevent buckling of individual truss web and/or chord members only. Additional temporary and permanent bracing is always required for stability and to prevent collapse with possible personal injury and property damage. For general guidance regarding the fabrication, storage, delivery, erection and bracing of trusses and truss systems, see **ANSI/TPI 1 Quality Criteria and DSB-22** available from Truss Plate Institute (www.tpinst.org) and **BCSI Building Component Safety Information** available from the Structural Building Components Association (www.sbcacomponents.com)



818 Soundside Road
 Edenton, NC 27932

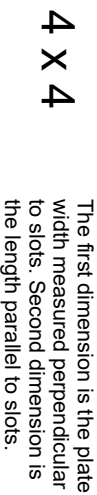
Symbols

PLATE LOCATION AND ORIENTATION

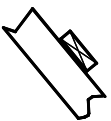


* Plate location details available in MITek software or upon request.

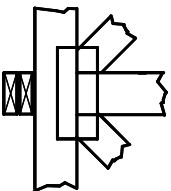
PLATE SIZE



LATERAL BRACING LOCATION

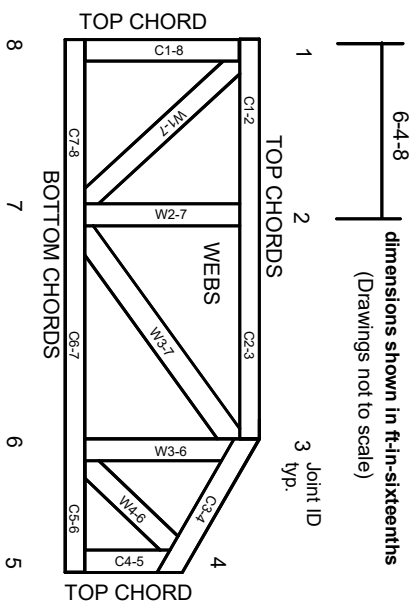


BEARING



Industry Standards:
ANSI/TP11: National Design Specification for Metal Plate Connected Wood Truss Construction.
DSB-22: Building Component Safety Information, Guide to Good Practice for Handling, Installing, Restraining & Bracing of Metal Plate Connected Wood Trusses.

Numbering System



JOINTS ARE GENERALLY NUMBERED/LETTERED CLOCKWISE AROUND THE TRUSS STARTING AT THE JOINT FARTHEST TO THE LEFT.

CHORDS AND WEBS ARE IDENTIFIED BY END JOINT NUMBERS/LETTERS.

Product Code Approvals

ICC-EES Reports:

ESR-1988, ESR-2362, ESR-2685, ESR-3282
ESR-4722, ESL-1388

Design General Notes

Trusses are designed for wind loads in the plane of the truss unless otherwise shown.

Lumber design values are in accordance with ANSI/TP1 1 section 6.3. These truss designs rely on lumber values established by others.

© 2023 MITek® All Rights Reserved

General Safety Notes

Failure to Follow Could Cause Property Damage or Personal Injury

1. Additional stability bracing for truss system, e.g. diagonal or X-bracing, is always required. See BCSI.
2. Truss bracing must be designed by an engineer. For wide truss spacing, individual lateral braces themselves may require bracing, or alternative Tor I bracing should be considered.
3. Never exceed the design loading shown and never stack materials on inadequately braced trusses.
4. Provide copies of this truss design to the building designer, erection supervisor, property owner and all other interested parties.
5. Cut members to bear tightly against each other.
6. Place plates on each face of truss at each joint and embed fully. Knots and wane at joint locations are regulated by ANSI/TP1 1.
7. Design assumes trusses will be suitably protected from the environment in accord with ANSI/TP1 1.
8. Unless otherwise noted, moisture content of lumber shall not exceed 19% at time of fabrication.
9. Unless expressly noted, this design is not applicable for use with fire retardant, preservative treated, or green lumber.
10. Camber is a non-structural consideration and is the responsibility of truss fabricator. General practice is to camber for dead load deflection.
11. Plate type, size, orientation and location dimensions indicated are minimum plating requirements.
12. Lumber used shall be of the species and size, and in all respects, equal to or better than that specified.
13. Top chords must be sheathed or purlins provided at spacing indicated on design.
14. Bottom chords require lateral bracing at 10 ft. spacing, or less, if no ceiling is installed, unless otherwise noted.
15. Connections not shown are the responsibility of others.
16. Do not cut or alter truss member or plate without prior approval of an engineer.
17. Install and load vertically unless indicated otherwise.
18. Use of green or treated lumber may pose unacceptable environmental, health or performance risks. Consult with project engineer before use.
19. Review all portions of this design (front, back, words and pictures) before use. Reviewing pictures alone is not sufficient.
20. Design assumes manufacture in accordance with ANSI/TP1 1 Quality Criteria.
21. The design does not take into account any dynamic or other loads other than those expressly stated.

MITek

ENGINEERING BY
TRENCO
A MITek Affiliate

MITek Engineering Reference Sheet: MIL-7473 rev. 1/2/2023