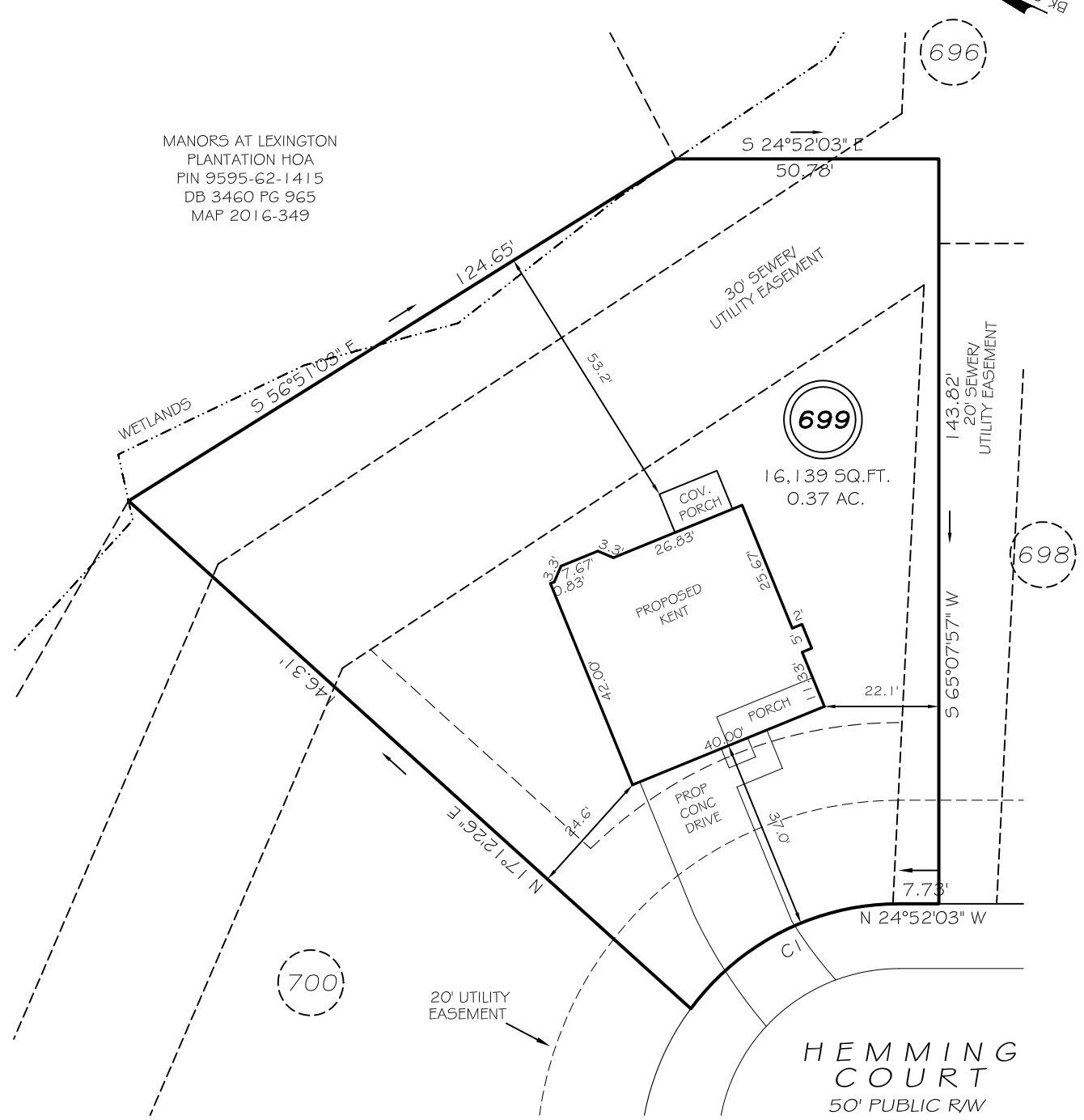


I, MICHAEL P. GRIFFIN, certify that under my direction and supervision this map was drawn from an actual field survey; that the error of closure of the survey as calculated by coordinates is 1: 10,000+; that the area shown hereon was calculated by coordinates.

Witness my hand and seal this day of MONTH 2021.

BK 2021 FG 287-288  
HARNETT CO. REGISTRY



MANORS AT LEXINGTON  
PLANTATION HOA  
PIN 9595-62-1415  
DB 3460 PG 965  
MAP 2016-349

**SETBACKS**

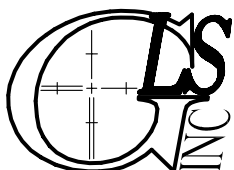
FRONT	35'
REAR	25'
SIDE (ONE SIDE)	5'
SIDE (ONE SIDE)	10'
CORNER SIDE	20'

CI R=50.00' L=46.68' N51°36'37"W 45.00'

**LEGEND**

EIP	EXISTING IRON PIPE	FES	FLARED END SECTION
IPS	IRON PIPE SET	WM	WATER METER
R/W	RIGHT OF WAY	CO	CLEAN OUT
N/F	NOW OR FORMERLY	FH	FIRE HYDRANT
EIS	EXISTING IRON STAKE	CB	CATCH BASIN

**PRELIMINARY**  
NOT FOR RECORDATION,  
SALES OR CONVEYANCE



**GRIFFIN LAND SURVEYING, INC.**

P. O. BOX 148  
FUQUAY-VARINA, NC 27526  
(919) - 567 - 1963

**PLOT PLAN**

FOR

**H & H HOMES**

**LEXINGTON PLANTATION**

**LOT 699**

HEMMING COURT

NORTH CAROLINA

HARNETT COUNTY ANDERSON CREEK TOWNSHIP

DRAWN BY NMF

DATE 8/31/21

CHECKED BY MPG

SCALE 1" = 30'