

THIS LAYOUT IS TO BE USED AS A TRUSS PLACEMENT GUIDE ONLY.  
PLEASE REFER TO BUILDING PLANS FOR BUILDING CONSTRUCTION AND DETAILS,  
SUCH AS PLUMBING OR DUCT DROPS.

PROPOSED DESIGN-  
NOT FOR  
CONSTRUCTION

Job #  
Q-2200369

Harris Resd Oakfield  
Fuquay Varina

Date Quoted:

Designer:  
Devon Thompson

Truesdale Capital  
198 Annabelle Dr  
Chapel Hill, NC

Peak Truss  
Builders, LLC  
PO Box 340, New Hill, NC 27562

- Notes:
- Exterior dimensions shown are assumed to be:
    - ☐ Out-to-out of stud
    - ☒ Out-to-out of sheathing
  - Adjust truss locations as needed for plumbing and mechanical clearance. Unless otherwise noted, trusses may be shifted as long as O.C. spacing shown is not exceeded.
  - Do not cut, drill, or otherwise damage any part of any truss without prior approval from Peak Truss.
  - Do not approve drawings if any information herein is unclear. Once ordered trusses will be fabricated as approved.
  - Please contact Peak Truss Builders with any questions. We are available to help any way we can. We can be reached at 919-545-5555 or sales@peaktruss.com

Floor Truss Loading per 2018 NC Residential Code

Top Chord Live Load 40# PSF  
Top Chord Dead Load 10# PSF  
Bottom Chord Live Load 0# PSF  
Bottom Chord Dead Load 5# PSF

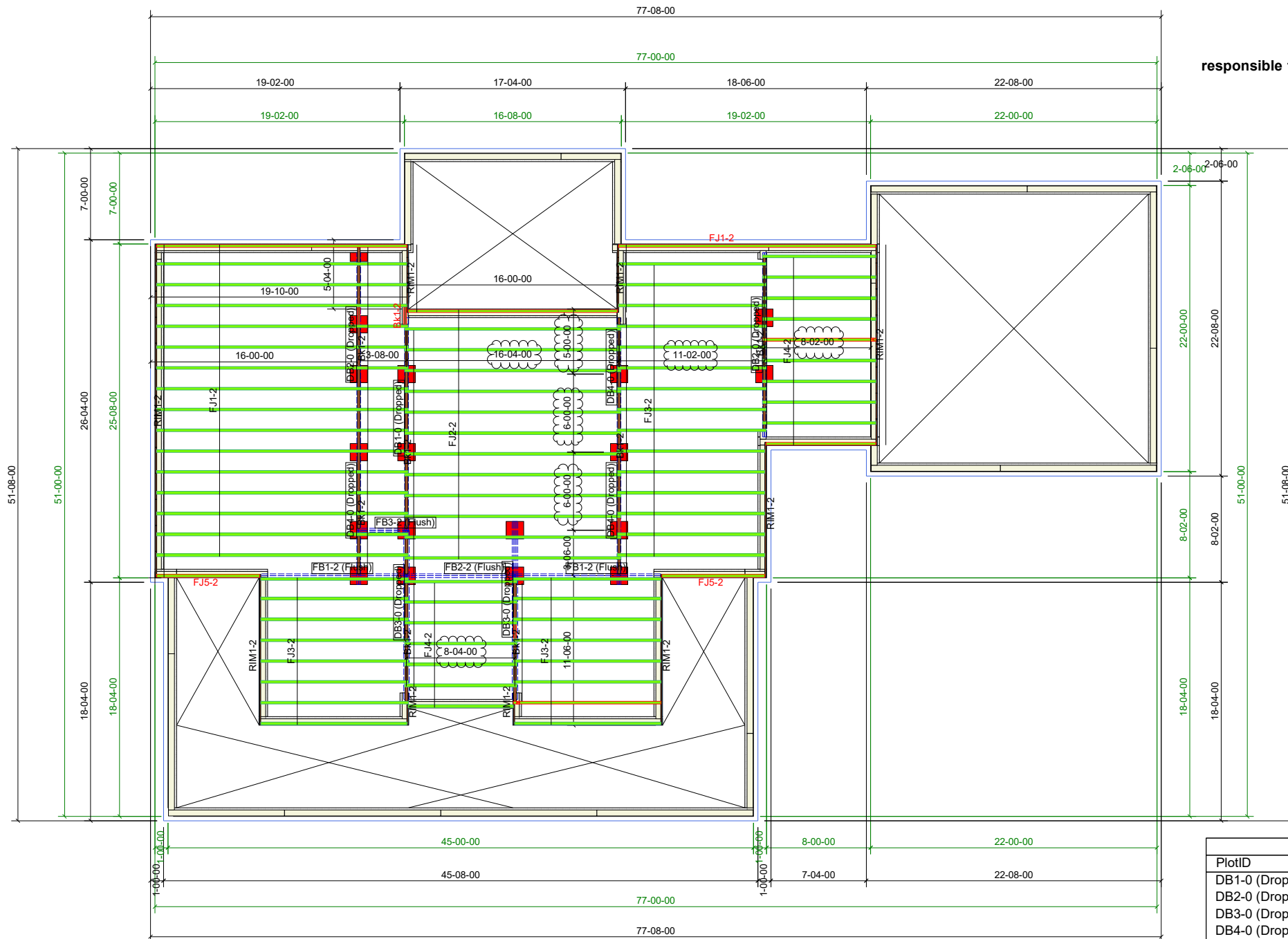
Live load deflection limit L/360  
Spans over 20' limit L/480

- △ - This symbol denotes left end of truss as shown on truss drawings
- - Approximate location of toilet drop. Builder please confirm.

Truss connections by others:

- N - Nailed
- L - Ledger

Piers by others. Peak Truss is NOT responsible for pier size / location. Need to verify with EOR.



Harris Residence Oakfield - Crawl  
11-7/8" I-Joists  
19.2" OC

Products					
PlotID	Length	Product	Plies	Net Qty	Fab Type
FJ1-2	20-00-00	11-7/8" LPI 20Plus	1	17	MFD
FJ2-2	18-00-00	11-7/8" LPI 20Plus	1	13	MFD
FJ3-2	12-00-00	11-7/8" LPI 20Plus	1	31	MFD
FJ4-2	10-00-00	11-7/8" LPI 20Plus	1	17	MFD
FJ5-2	8-00-00	11-7/8" LPI 20Plus	1	2	MFD
FB1-2 (Flush)	12-00-00	1-3/4X11-7/8 LP-LVL 2900Fb-2.0E	2	4	MFD
FB2-2 (Flush)	10-00-00	1-3/4X11-7/8 LP-LVL 2900Fb-2.0E	2	2	MFD
FB3-2 (Flush)	4-00-00	1-3/4X11-7/8 LP-LVL 2900Fb-2.0E	2	2	MFD
RIM1-2	88-00-00	1-1/8X11-7/8 LP-OSB Plus	1	1	FF
Bk1-2	76-00-00	11-7/8" LPI 20Plus	1	1	FF

Products					
PlotID	Length	Product	Plies	Net Qty	Fab Type
DB1-0 (Dropped)	18-00-00	1-3/4X11-7/8 LP-LVL 2900Fb-2.0E	2	2	MFD
DB2-0 (Dropped)	16-00-00	1-3/4X11-7/8 LP-LVL 2900Fb-2.0E	2	4	MFD
DB3-0 (Dropped)	14-00-00	1-3/4X11-7/8 LP-LVL 2900Fb-2.0E	3	6	MFD
DB4-0 (Dropped)	12-00-00	1-3/4X11-7/8 LP-LVL 2900Fb-2.0E	2	6	MFD

THIS LAYOUT IS TO BE USED AS A TRUSS PLACEMENT GUIDE ONLY.  
PLEASE REFER TO BUILDING PLANS FOR BUILDING CONSTRUCTION AND DETAILS,  
SUCH AS PLUMBING OR DUCT DROPS.

PROPOSED DESIGN-  
NOT FOR  
CONSTRUCTION

Job #

Q-2200369

Harris Resd Oakfield

Fuquay Varina

Date Quoted:

Designer:

Devon Thompson

Truesdale Capital  
198 Annabelle Dr  
Chapel Hill, NC

Peak Truss  
Builders, LLC  
PO Box 340, New Hill, NC 27562

- Notes:
- Exterior dimensions shown are assumed to be:
    - Out-to-out of stud
    - Out-to-out of sheathing
  - Adjust truss locations as needed for plumbing and mechanical clearance. Unless otherwise noted, trusses may be shifted as long as O.C. spacing shown is not exceeded.
  - Do not cut, drill, or otherwise damage any part of any truss without prior approval from Peak Truss.
  - Do not approve drawings if any information herein is unclear. Once ordered trusses will be fabricated as approved.
  - Please contact Peak Truss Builders with any questions. We are available to help any way we can. We can be reached at 919-545-5555 or sales@peaktruss.com

Roof Truss Loading per 2018 NC Residential Code

Top Chord Live Load 20# PSF  
Top Chord Dead Load 10# PSF  
Bottom Chord Live Load 0# PSF  
Bottom Chord Dead Load 10# PSF

Trusses are designed for additional storage load wherever a 42"x24" box will fit between the webs.

△ - This symbol denotes left end of truss as shown on truss drawings

● - Approximate location of toilet drop. Builder please confirm.

Truss connections by others:

- N - Nailed
- L - Ledger

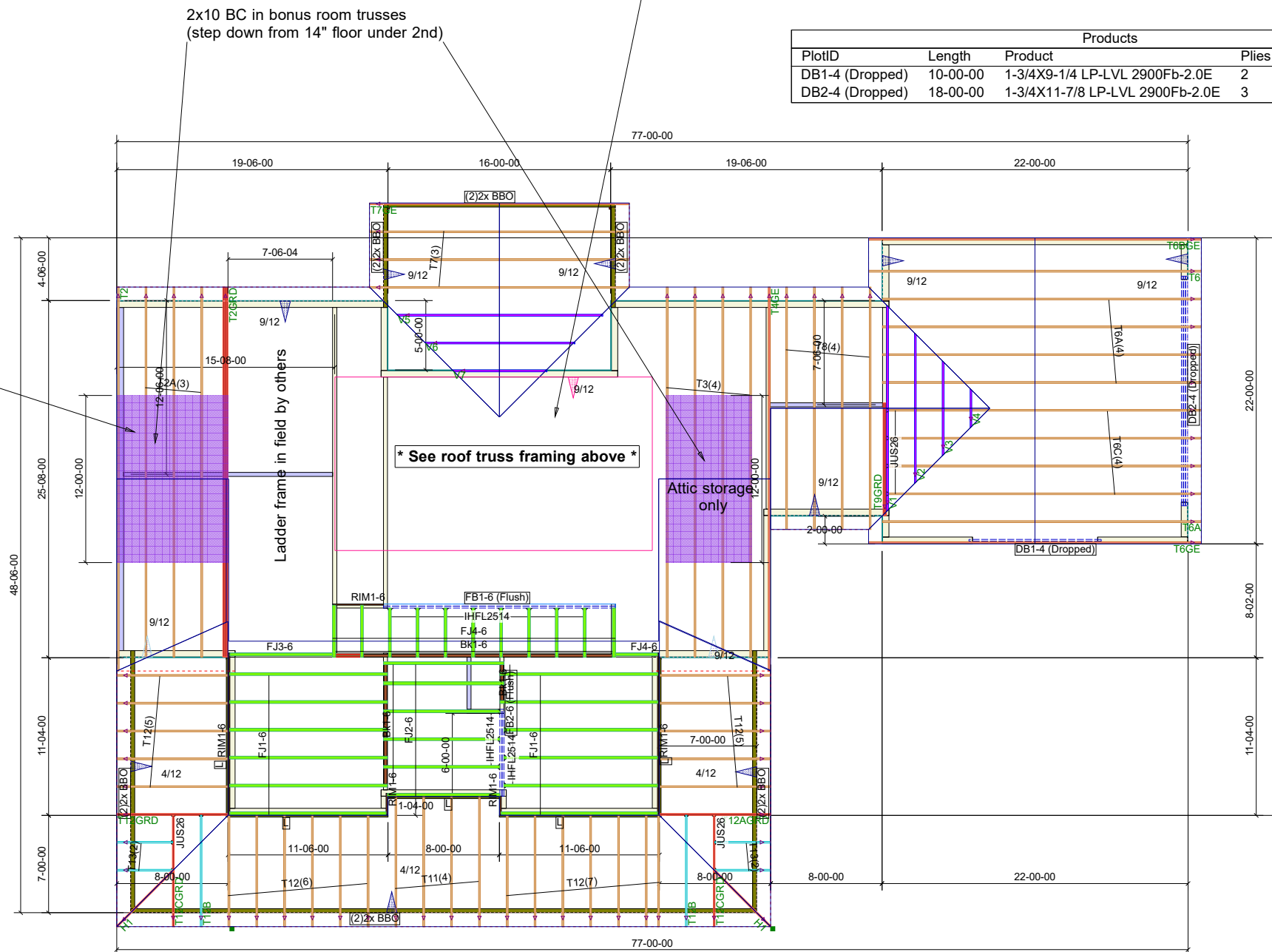
Floor Truss Loading per 2018 NC Residential Code

Top Chord Live Load 40# PSF  
Top Chord Dead Load 10# PSF  
Bottom Chord Live Load 0# PSF  
Bottom Chord Dead Load 5# PSF

Live load deflection limit L/360  
Spans over 20' limit L/480

This design proposes a sloped CLG from the 1st floor to the 2nd floor.  
Please review truss Drawings

PlotID	Length	Product	Plies	Net Qty	Fab Type
DB1-4 (Dropped)	10-00-00	1-3/4X9-1/4 LP-LVL 2900Fb-2.0E	2	2	MFD
DB2-4 (Dropped)	18-00-00	1-3/4X11-7/8 LP-LVL 2900Fb-2.0E	3	3	MFD



7'6" CLG in bonus truss,  
8' CLG does NOT function in this truss

2x10 BC in bonus room trusses  
(step down from 14" floor under 2nd)

\* See roof truss framing above \*

Attic storage only

Roof Trusses  
2' OC, 1' Overhang

Manuf	Product	Qty
USP	JUS26	6

Harris Residence Oakfield - 1st Floor  
14" I-Joists  
2' OC

Qty	Manuf	Product
1	USP	IHFL2514
13	USP	IHFL2514

PlotID	Length	Product	Plies	Net Qty	Fab Type
FJ1-6	12-00-00	14" LPI 20Plus	1	12	MFD
FJ2-6	10-00-00	14" LPI 20Plus	1	6	MFD
FJ3-6	8-00-00	14" LPI 20Plus	1	1	MFD
FJ4-6	4-00-00	14" LPI 20Plus	1	12	MFD
FB1-6 (Flush)	18-00-00	1-3/4X14 LP-LVL 2900Fb-2.0E	2	2	MFD
FB2-6 (Flush)	8-00-00	1-3/4X14 LP-LVL 2900Fb-2.0E	2	2	MFD
RIM1-6	30-00-00	1-1/8X14 LP-OSB Plus	1	1	FF
Bk1-6	28-00-00	14" LPI 20Plus	1	1	FF

THIS LAYOUT IS TO BE USED AS A TRUSS PLACEMENT GUIDE ONLY.  
PLEASE REFER TO BUILDING PLANS FOR BUILDING CONSTRUCTION AND DETAILS,  
SUCH AS PLUMBING OR DUCT DROPS.

PROPOSED DESIGN-  
NOT FOR  
CONSTRUCTION

Job #

Q-2200369

Harris Resd Oakfield

Fuquay Varina

Date Quoted:

Designer:  
Devon Thompson

Truesdale Capital  
198 Annabelle Dr  
Chapel Hill, NC

Peak Truss  
Builders, LLC



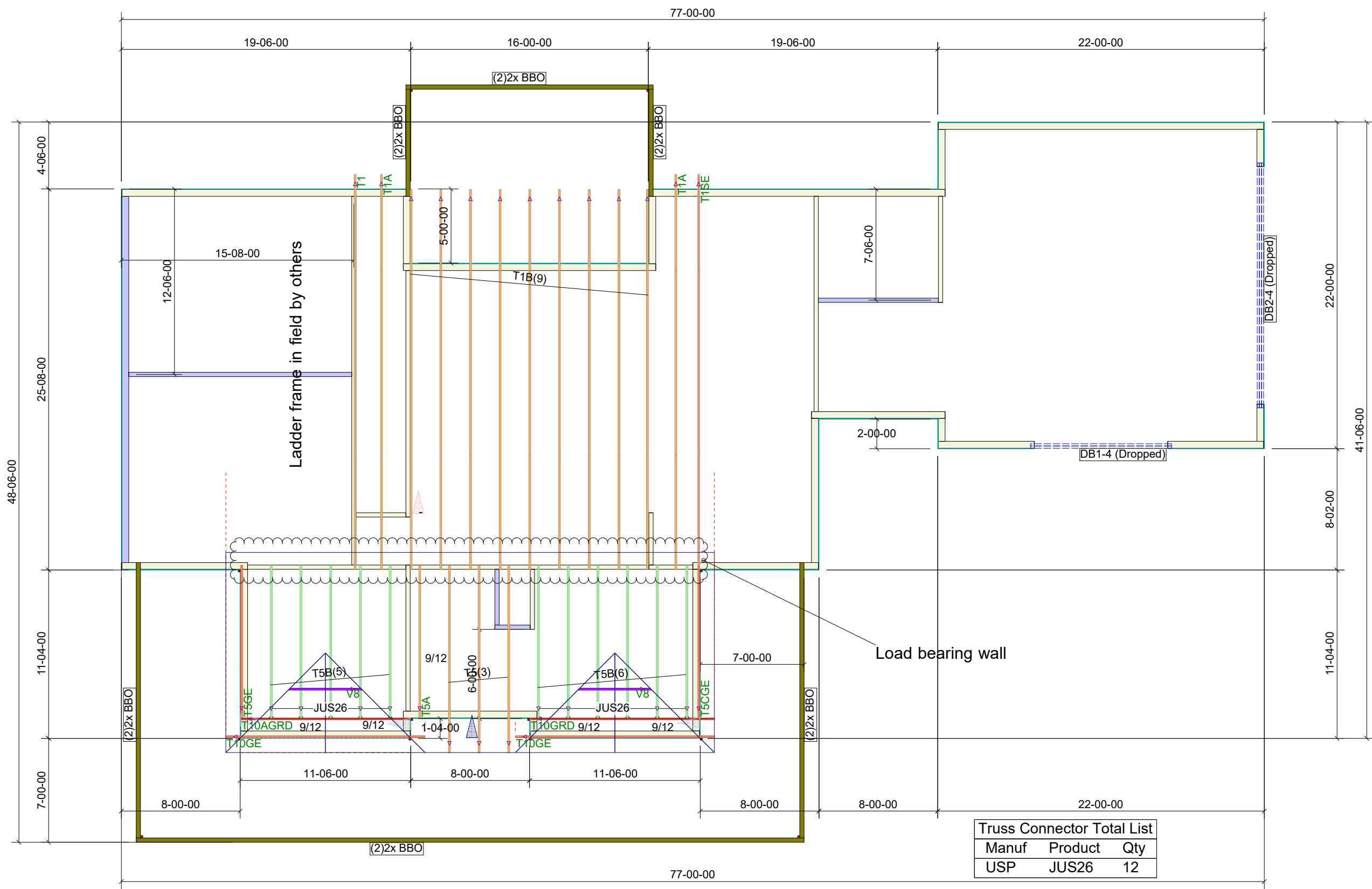
PO Box 340, New Hill, NC 27562

Notes:  
1. Exterior dimensions shown are assumed to be:  
 Out-to-out of stud  
 Out-to-out of sheathing  
2. Adjust truss locations as needed for plumbing and mechanical clearance. Unless otherwise noted, trusses may be shifted as long as O.C. spacing shown is not exceeded.  
3. Do not cut, drill, or otherwise damage any part of any truss without prior approval from Peak Truss.  
4. Do not approve drawings if any information herein is unclear. Once ordered trusses will be fabricated as approved.  
5. Please contact Peak Truss Builders with any questions. We are available to help any way we can. We can be reached at 919-545-5555 or sales@peaktruss.com

Roof Truss Loading per 2018 NC Residential Code  
Top Chord Live Load 20# PSF  
Top Chord Dead Load 10# PSF  
Bottom Chord Live Load 0# PSF  
Bottom Chord Dead Load 10# PSF

Trusses are designed for additional storage load wherever a 42"x24" box will fit between the webs.  
△ - This symbol denotes left end of truss as shown on truss drawings  
● - Approximate location of toilet drop. Builder please confirm.

Truss connections by others:  
⊕ - Nailed  
⊞ - Ledger



Truss Connector Total List		
Manuf	Product	Qty
USP	JUS26	12

Harris Residence Oakfield - Upper Roof  
Roof Trusses  
2' OC, 1' Overhang

THIS LAYOUT IS TO BE USED AS A TRUSS PLACEMENT GUIDE ONLY.  
PLEASE REFER TO BUILDING PLANS FOR BUILDING CONSTRUCTION AND DETAILS,  
SUCH AS PLUMBING OR DUCT DROPS.

PROPOSED DESIGN-  
NOT FOR  
CONSTRUCTION

Job #

Q-2200369

Harris Resd Oakfield

Fuquay Varina

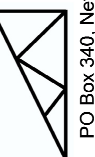
Date Quoted:

Designer:

Devon Thompson

Truesdale Capital  
198 Annabelle Dr  
Chapel Hill, NC

Peak Truss  
Builders, LLC



PO Box 340, New Hill, NC 27562

- Notes:
- Exterior dimensions shown are assumed to be:
    - Out-to-out of stud
    - Out-to-out of sheathing
  - Adjust truss locations as needed for plumbing and mechanical clearance. Unless otherwise noted, trusses may be shifted as long as O.C. spacing shown is not exceeded.
  - Do not cut, drill, or otherwise damage any part of any truss without prior approval from Peak Truss.
  - Do not approve drawings if any information herein is unclear. Once ordered trusses will be fabricated as approved.
  - Please contact Peak Truss Builders with any questions. We are available to help any way we can. We can be reached at 919-545-5555 or sales@peaktruss.com

Roof Truss Loading per 2018 NC Residential Code

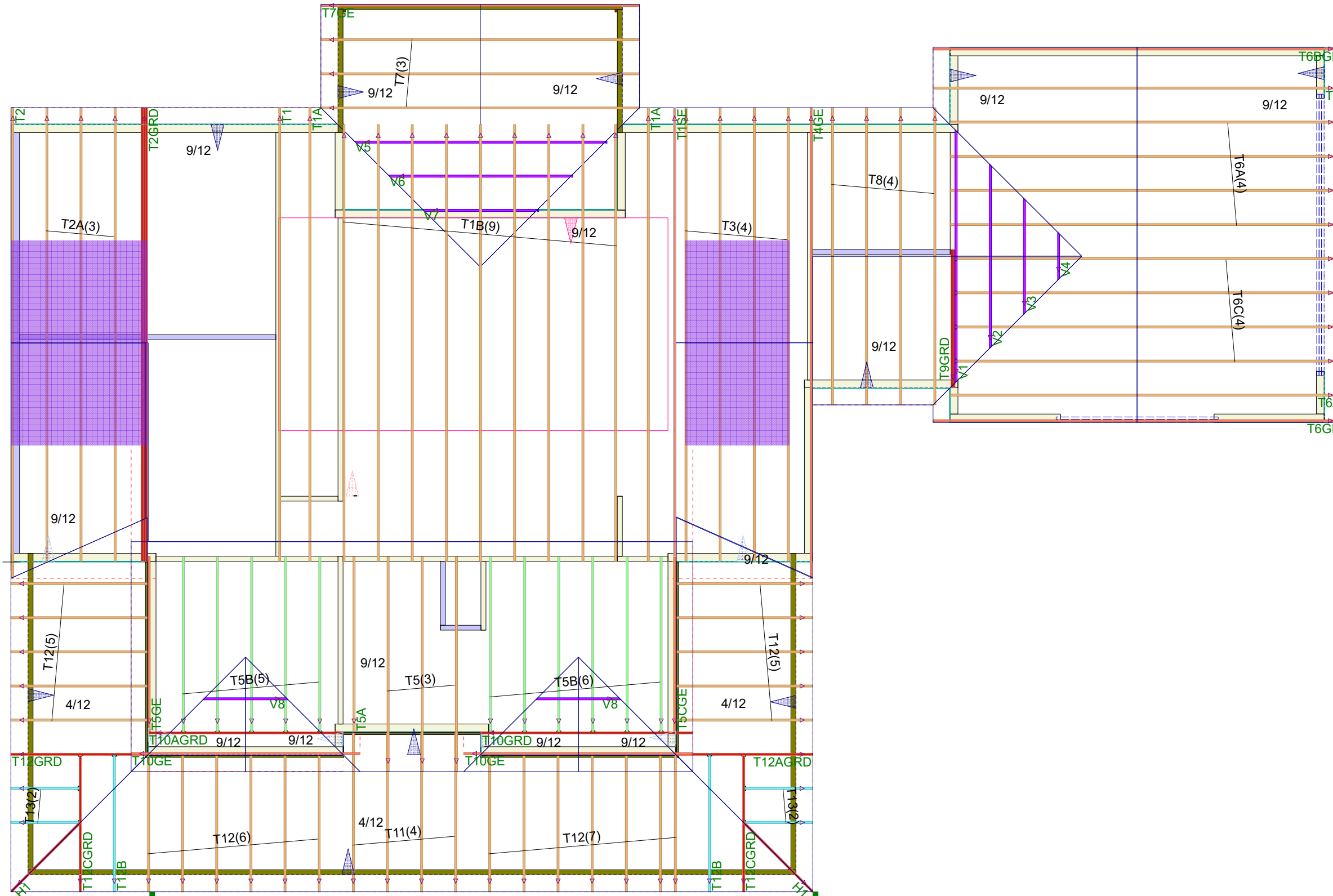
Top Chord Live Load	20# PSF
Top Chord Dead Load	10# PSF
Bottom Chord Live Load	0# PSF
Bottom Chord Dead Load	10# PSF

Trusses are designed for additional storage load wherever a 42"x24" box will fit between the webs.

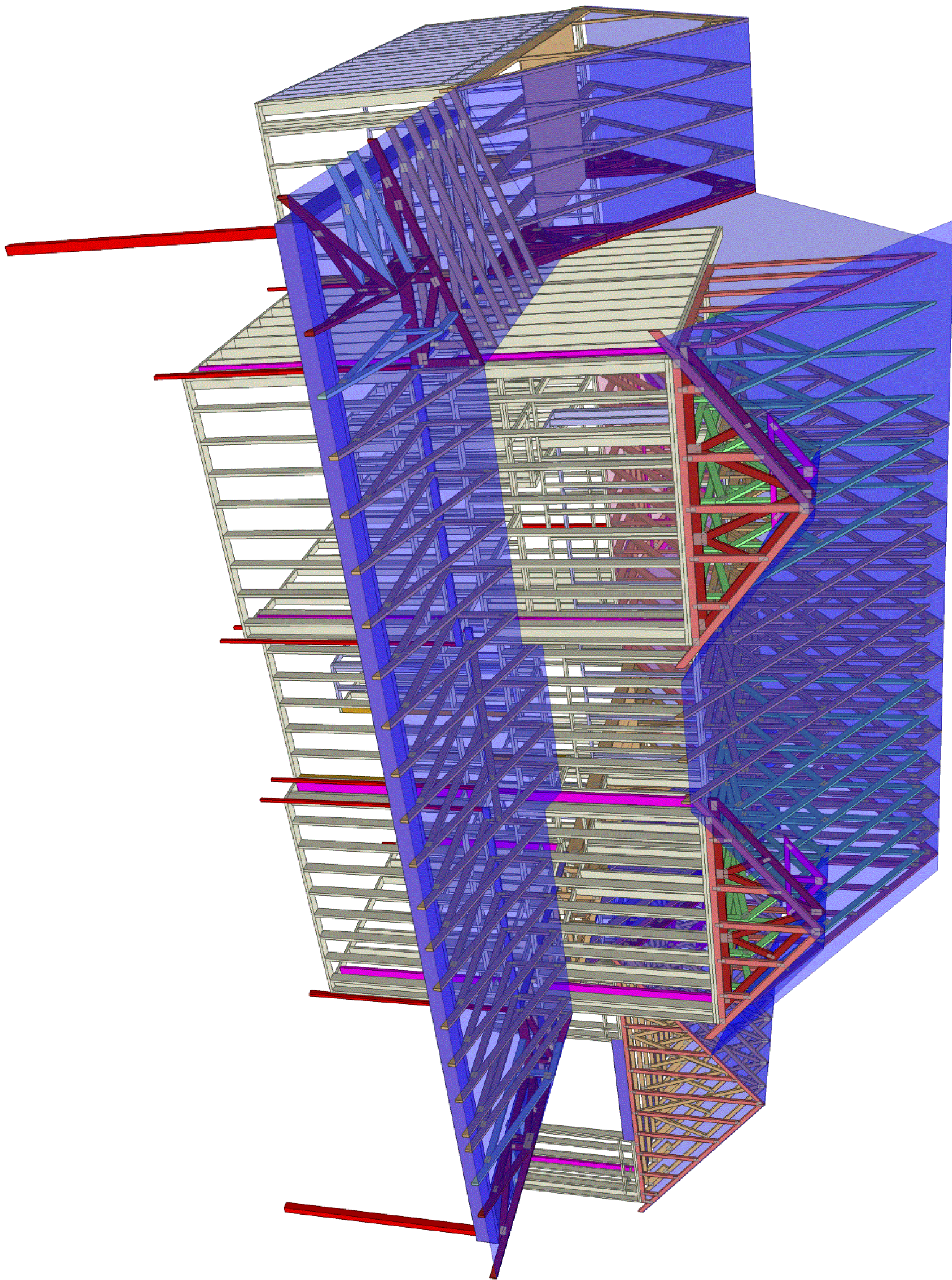
- △ - This symbol denotes left end of truss as shown on truss drawings
- - Approximate location of toilet drop. Builder please confirm.

Truss connections by others:

- ⊕ - Nailed
- ⊔ - Ledger







**Peak Truss  
Builders, LLC**

PO Box 340, New Hill, NC 27562

Tuesdale Capital  
198 Annabelle Dr  
Chapel Hill, NC

Date Quoted:

Designer:  
**Devon Thompson**

Harris Resd Oakfield

Fuquay Varina

Job #

**Q-2200369**

