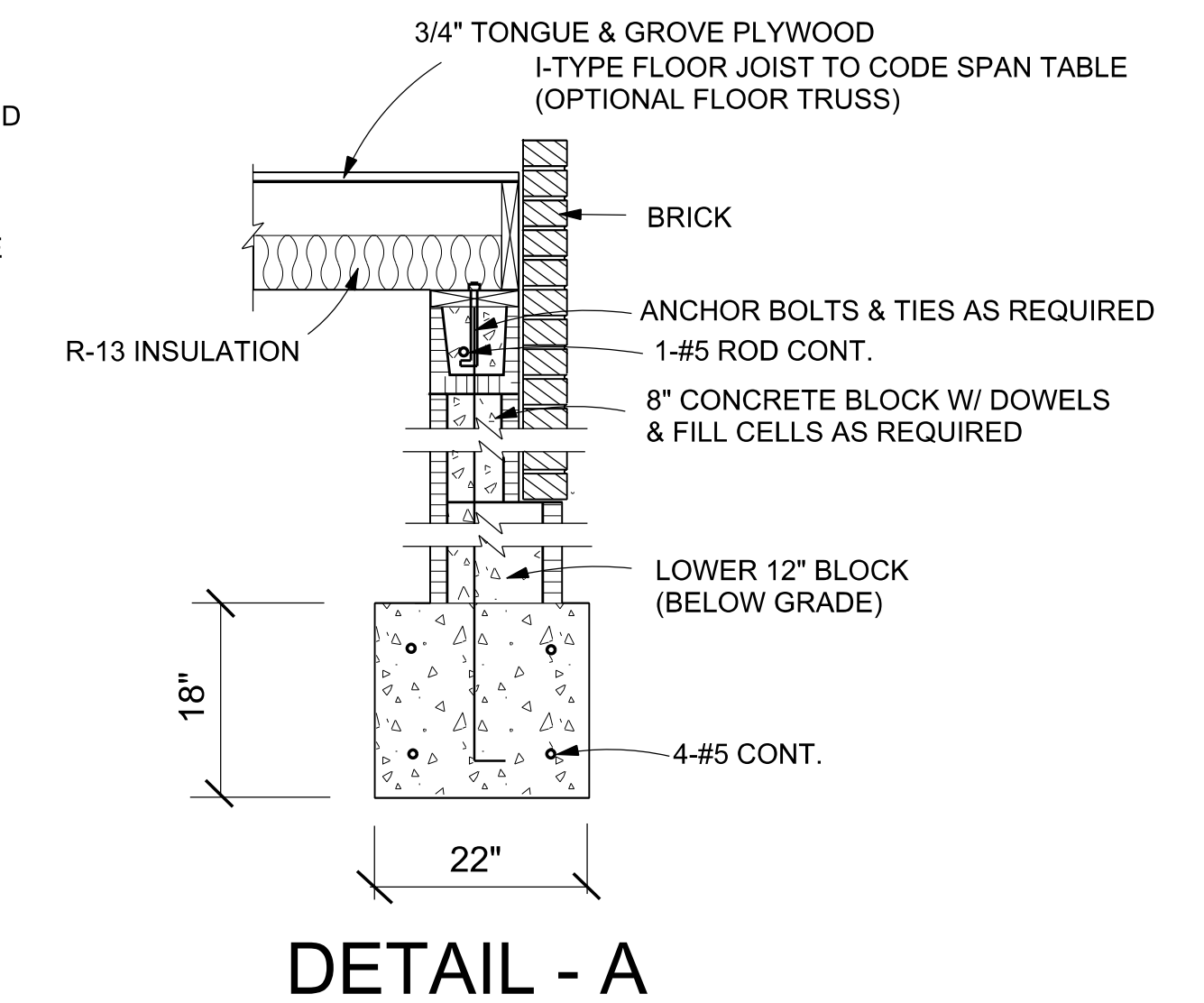
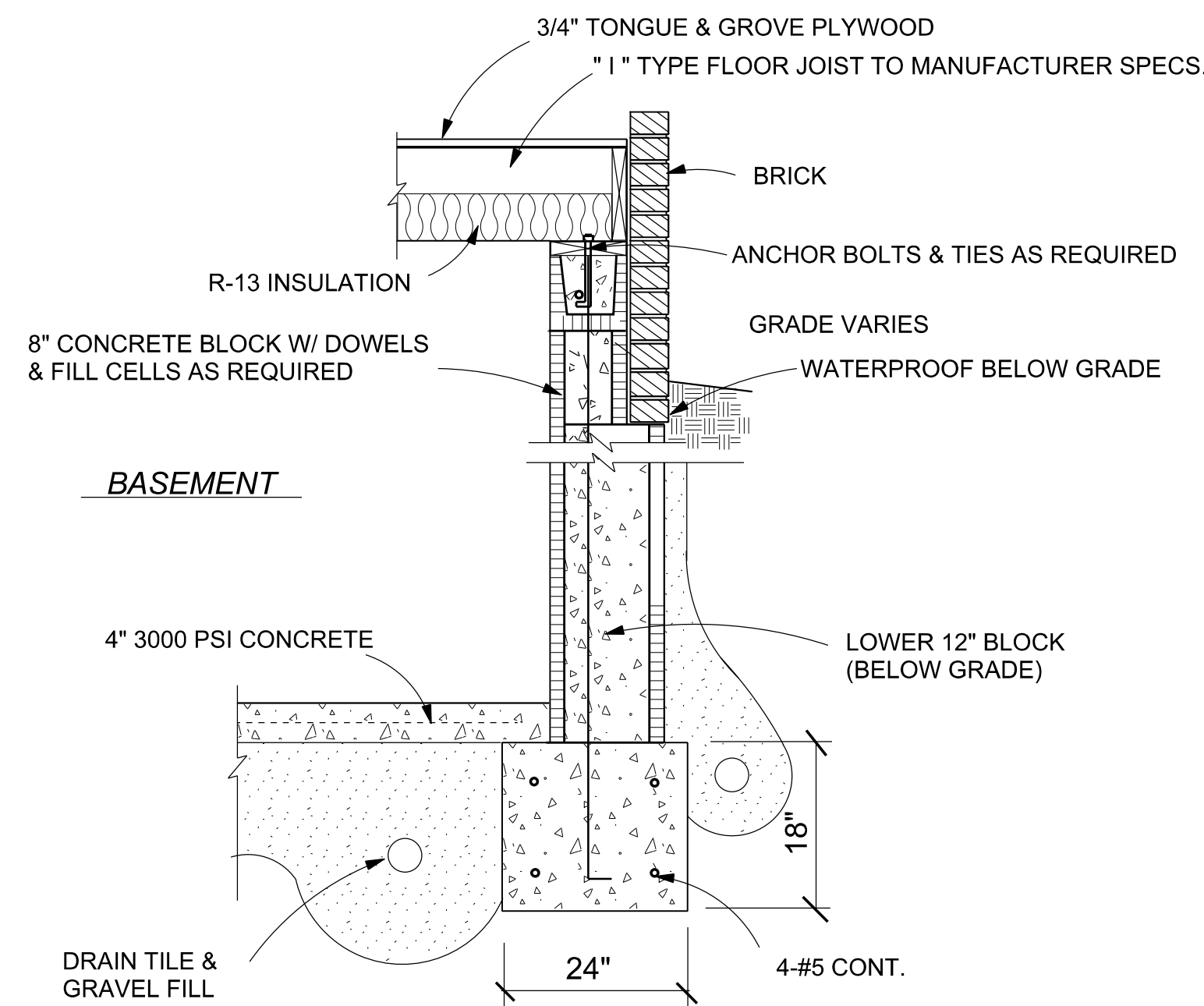
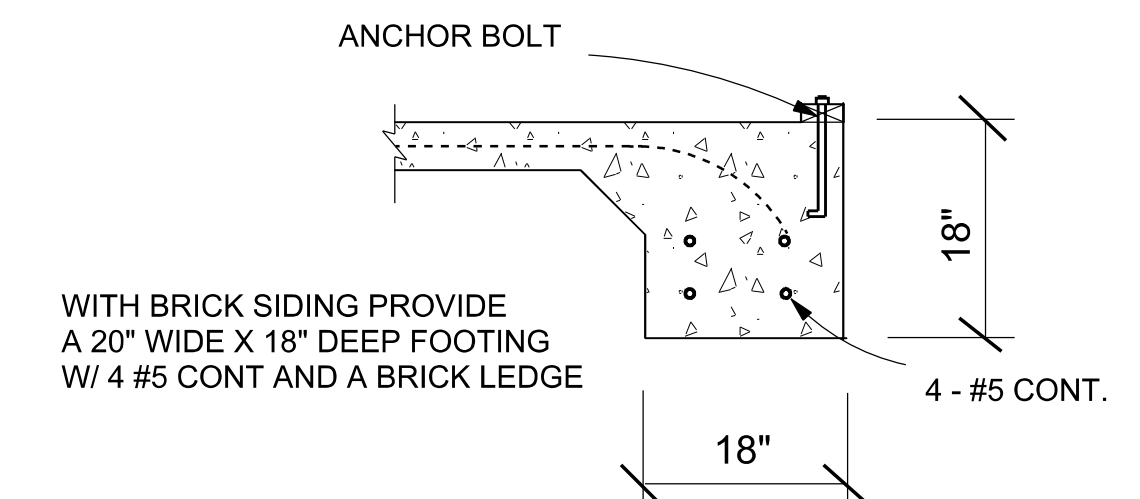
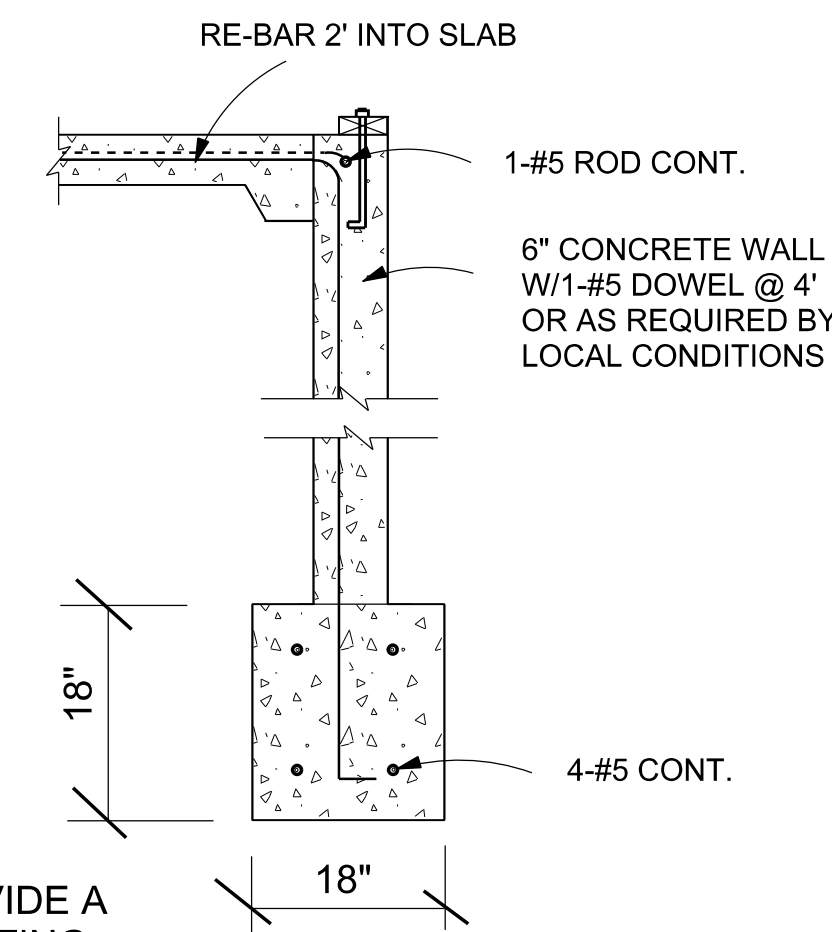
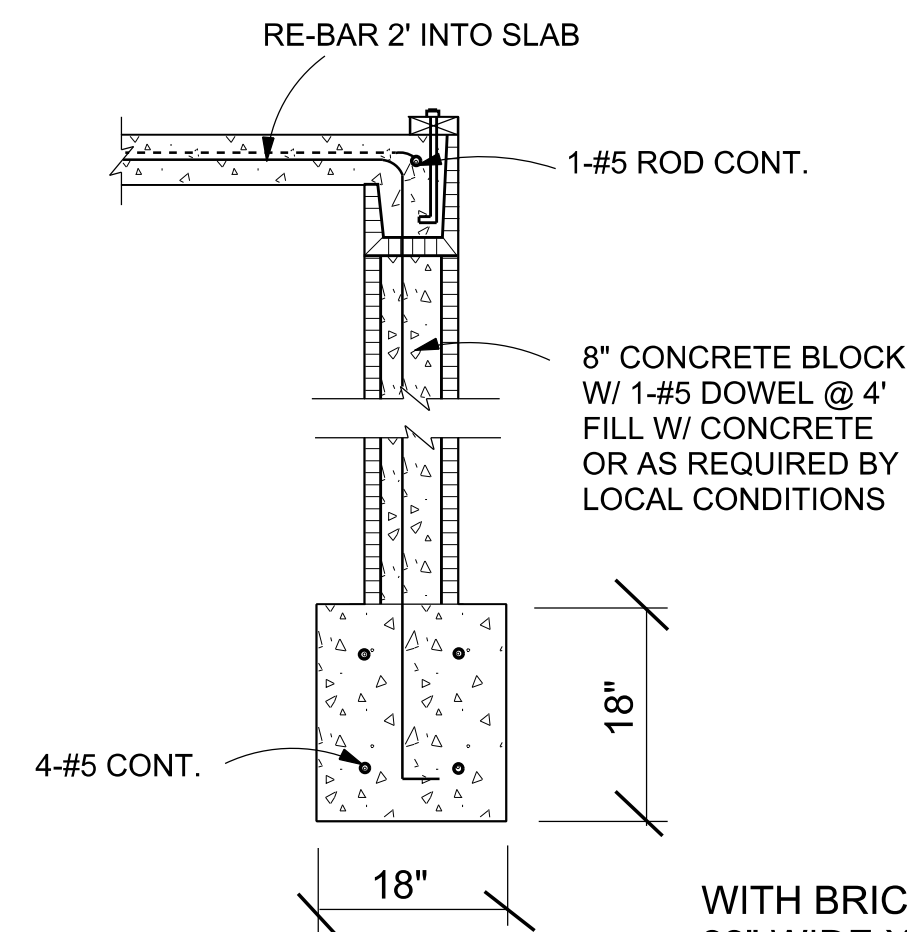


NOTE: SEE ADDITIONAL NOTES ON FRONT ELEVATION SHEET.



OPTIONAL BASEMENT SECTION



WITH BRICK SIDING PROVIDE A 20" WIDE X 18" DEEP FOOTING

2 STORY FOUNDATION DETAILS (OPTIONS)

- NOTES:
- * WALLS ABOVE 4'-0" FROM FINISH GRADE MAY REQUIRE ADDITIONAL STRUCTURAL SIZING, SEE ENGINEER (FOOTING SIZE & RETAINING WALL REQ.)
 - * FOOTING DETAILS MAY VARY IN REQUIREMENTS, IN YOUR AREA, VERIFY WITH CONTRACTOR OR ENGINEER.
 - * CONCRETE FLOOR TO BE 8" MINIMUM ABOVE FINISH GRADE.
 - * PROVIDE COMPACTED SAND FILL AS REQUIRED UNDER FOOTINGS.

W. L. MARTIN HOME DESIGNS DOES NOT WARRANT OR GUARANTEE THE ACCURACY OF THIS SET OF PLANS. BEFORE CONSTRUCTION THE CONTRACTOR, ENGINEER, OR ARCHITECT MUST CHECK DIMENSIONS AND LOADING, AND VERIFY THAT THESE PLANS COMPLY WITH ALL BUILDING CODES IN EFFECT AT CONSTRUCTION LOCATION.

REVISIONS	BY

W.L. Martin Home Designs
 for Contact Information
www.wlmarthomes.com

Date	
Scale	
Drawn	
Job	
Sheet	6
Of	8 Sheets