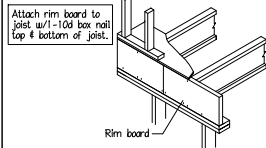
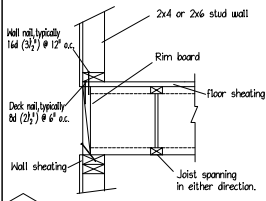


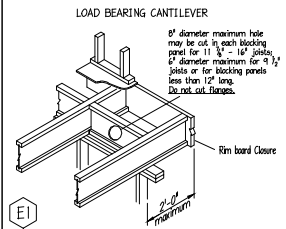
A1



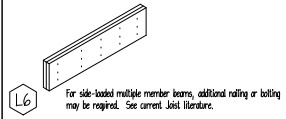
A3 Must have 1 3/4" minimum joist bearing at ends. For information on lateral load capacities refer to literature or load designer.



A7



E1 CONNECTION OF MULTIPLE PIECES OF TOP-LOADED BEAMS  
LVL & PSL (1 3/4" Width Pieces)  
• Minimum of 2 rows 16d (3/4") nails at 12" o.c.  
• Minimum of 3 rows 16d (3/4") nails at 12" o.c. for 14", 16", 18" beams.  
• Multiple pieces of LVL & PSL can be nailed or bolted together to form a header or beam of the required size, up to a maximum width of 7 inches.  
• Minimum of 2 rows 1/2" bolts at 24" o.c. staggered.



L6 For side-bolted multiple member beams, additional nailing or bolting may be required. See current joist literature.

ENGINEERED WOOD MATERIAL LIST

MATTAMY HOMES  
REDWOOD - LOT 59 PKC  
2ND FLOOR I-JOIST PLACEMENT PLAN

MARK	QTY	CUT LENGTH	DESCRIPTION	(Notes)
4	10	4'-0"	2" x 14" TJI 210	
7	3	7'-0"	2" x 14" TJI 210	
9	1	9'-0"	2" x 14" TJI 210	
12	2	12'-0"	2" x 14" TJI 210	
17a	12	17'-0"	2" x 14" TJI 210 < 2 >	
19a	8	19'-0"	2" x 14" TJI 210 < 2 >	
20	9	20'-0"	2" x 14" TJI 210	
21a	5	21'-0"	2" x 14" TJI 210 < 2 >	
36a	7	36'-0"	2" x 14" TJI 210 < 2 >	[Total 987]

BEAMS AND HEADERS

ITEM	QTY	UNIT	DESCRIPTION
LVL	2	12'-0"	1 3/4" x 14" LVL 2.0E (Flush)
LVL	2	8'-0"	1 3/4" x 14" LVL 2.0E (Flush)
LVL1	2	12'-0"	1 3/4" x 14" LVL 2.0E (Flush)

ACCESSORIES & OTHER MATERIALS (Simpson Hangers)

ITEM	QTY	UNIT	DESCRIPTION
14" Rim	162	LF	1 1/2" x 14" TJ Rim 14 pcs@12" or 11 pcs@16"
BP	17	1'-5 1/8"	14" Blocking Panel [Total 34']
H4c	1	PCS	M1U4.28/14 Double Face Mnt Hanger
H8c	18	PCS	IUS2.06/14 Single Face Mnt Hanger
10CUT14C	64	HOLE	10" Circular Cutout
TJLAYOUT	1	PCS	TJI Placement Layout
TJGUIDE	1	PCS	TJI Installation Guide

SEE MATERIAL LIST FOR DEPTH, GRADE & LENGTH  
INDICATED I-JOIST  
INDICATED TYPING/STANDARD FOR LVL  
INDICATED FLOOR/LVL LVL  
INDICATED PARALLEL PSL  
INDICATED BLOCK-LAY  
INDICATED A SECTION FROM THE INSTALLATION GUIDE SERIES IS ALSO SHOWN ON THIS SHEET  
LOAD BEARING WALL ABOVE  
BEAM BY CHAINS  
EXTRA JOIST ADDED  
EXTRA JOIST (1) UNDER WALL  
DOUBLE JOIST (2)  
TYPICAL JOIST (2)  
JOIST BRACKET PANEL  
1 JOIST OR 1 JOIST FROM ABOVE  
1 JOIST OR 1 JOIST FROM ABOVE  
CONCENTRATED POINT LOAD FROM ABOVE  
DEEP BEAM  
FLUSH BEAM

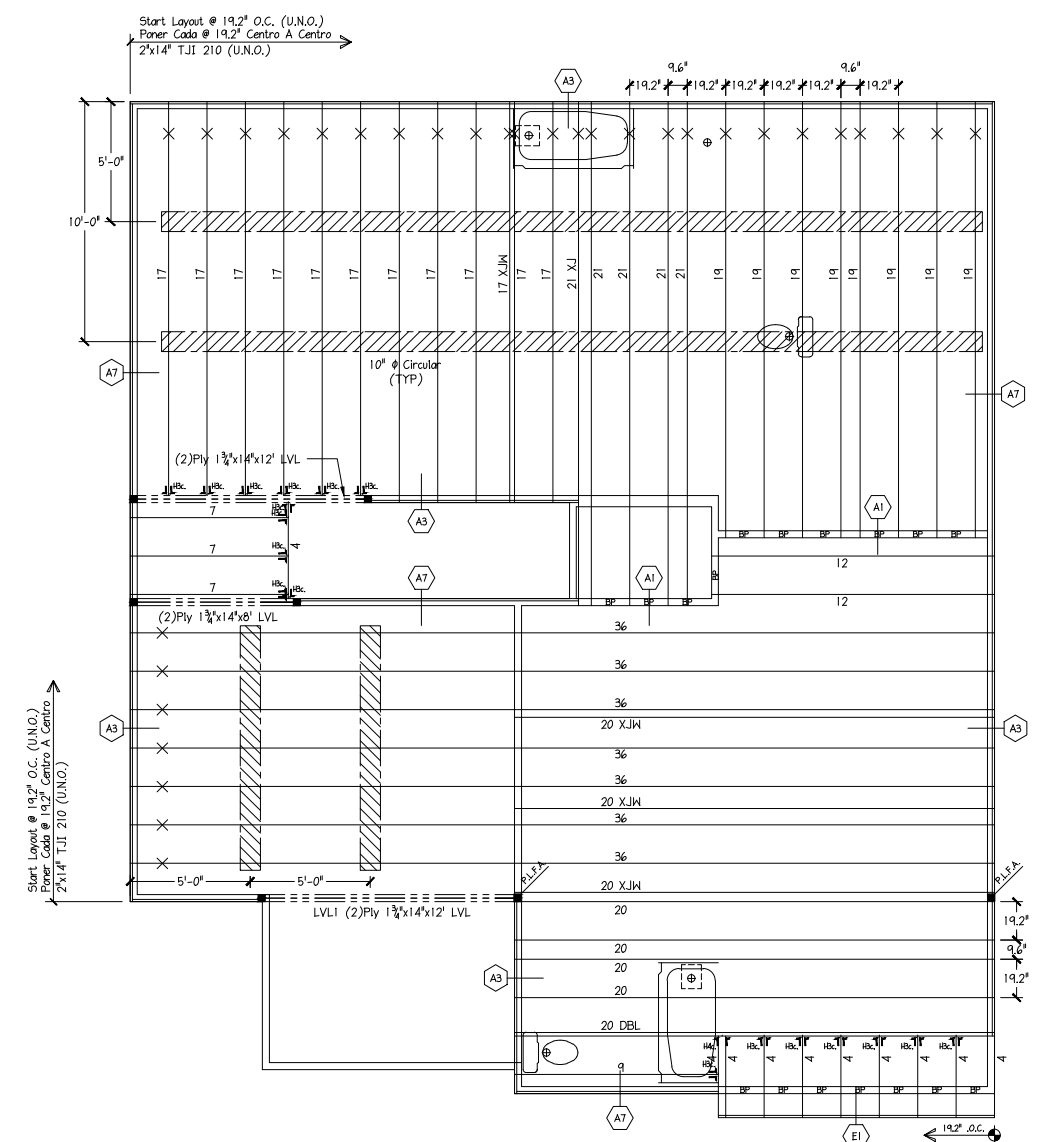
THIS SHOP DRAWING IS BASED ON THE FOLLOWING  
PROJECT LOCATION :  
PROJECT NUMBER :  
ARCHITECT DWG# BY :  
ARCHITECT REVISION :  
CHECKED BY :  
STRUCTURAL REVIEW BY :  
DATE :

DESIGN DATA

REV	BY	DATE / DESC.
SD	JDS	10/29/21
LIVE 40 PSF		
DEAD 10 PSF		
TOTAL LOAD = 50 PSF		
STRESS DURATION = 100%		
DEFLECTION CRITERIA : (L/480)		

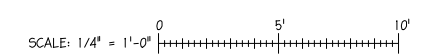
DESIGN DATA  
LIVE 40 PSF  
DEAD 10 PSF  
TOTAL LOAD = 50 PSF  
STRESS DURATION = 100%  
DEFLECTION CRITERIA : (L/480)

Builders FirstSource  
1800 MANUFACTURER INSTALLATION GUIDE (GENERAL FRAMING) (COORDINATE APPROPRIATE GUIDE FOR THIS PROJECT)  
THIS GUIDE IS A GENERAL GUIDE FOR THE INSTALLATION OF BUILDERS FIRSTSOURCE LVL AND PSL. IT IS NOT A SUBSTITUTE FOR THE MANUFACTURER'S INSTALLATION GUIDE FOR THE SPECIFIC PRODUCT BEING USED. ALWAYS REFER TO THE MANUFACTURER'S INSTALLATION GUIDE FOR THE LATEST INFORMATION AND SPECIFICATIONS. THE INFORMATION IN THIS GUIDE IS SUBJECT TO CHANGE WITHOUT NOTICE. ALWAYS REFER TO THE MANUFACTURER'S INSTALLATION GUIDE FOR THE LATEST INFORMATION AND SPECIFICATIONS. ALWAYS REFER TO THE MANUFACTURER'S INSTALLATION GUIDE FOR THE LATEST INFORMATION AND SPECIFICATIONS. ALWAYS REFER TO THE MANUFACTURER'S INSTALLATION GUIDE FOR THE LATEST INFORMATION AND SPECIFICATIONS.



2ND FLOOR I-JOIST PLACEMENT PLAN  
MATTAMY HOMES - REDWOOD - LOT 59 PKC

POINT LOAD FROM ABOVE (P.L.F.A.)  
USE SOLID BLOCKING TO TRANSFER LOAD FROM ABOVE TO FOUNDATION  
DO NOT CUT ORANGE END  
NO CORTE EL COLOR NARANJA  
"X" INDICATES ORANGE END  
"X" INDICAR EL COLOR NARANJA



BUILDER: MATTAMY HOMES  
MODEL: REDWOOD - LOT 59 PKC  
2ND FLOOR I-JOIST PLACEMENT PLAN  
DATE: TUESDAY, 14 DECEMBER 2021 - 9:05 AM  
FILE: 1.....ATTAMY HOMES REDWOOD - LOT 59 PROVIDENCE CREEK.DWG  
DRAWN BY: NJH DATE: 12/6/21  
SHEET: 1 OF 1 SHEETS