

General Notes:
 - Per ANSI/TPI 1-2002 all "Truss to Wall" connections are the responsibility of the Building Designer, not the Truss Manufacturer.

- Dimensions are Feet-Inches- Sixteenths.
- Trusses are to be 24" o.c. unless noted otherwise (U.N.O.)
- Trusses are not designed to support brick U.N.O.
- Do not cut or modify trusses without first contacting Builders FirstSource.
- Immediately contact Builders FirstSource if trusses are damaged.

Connection Notes:

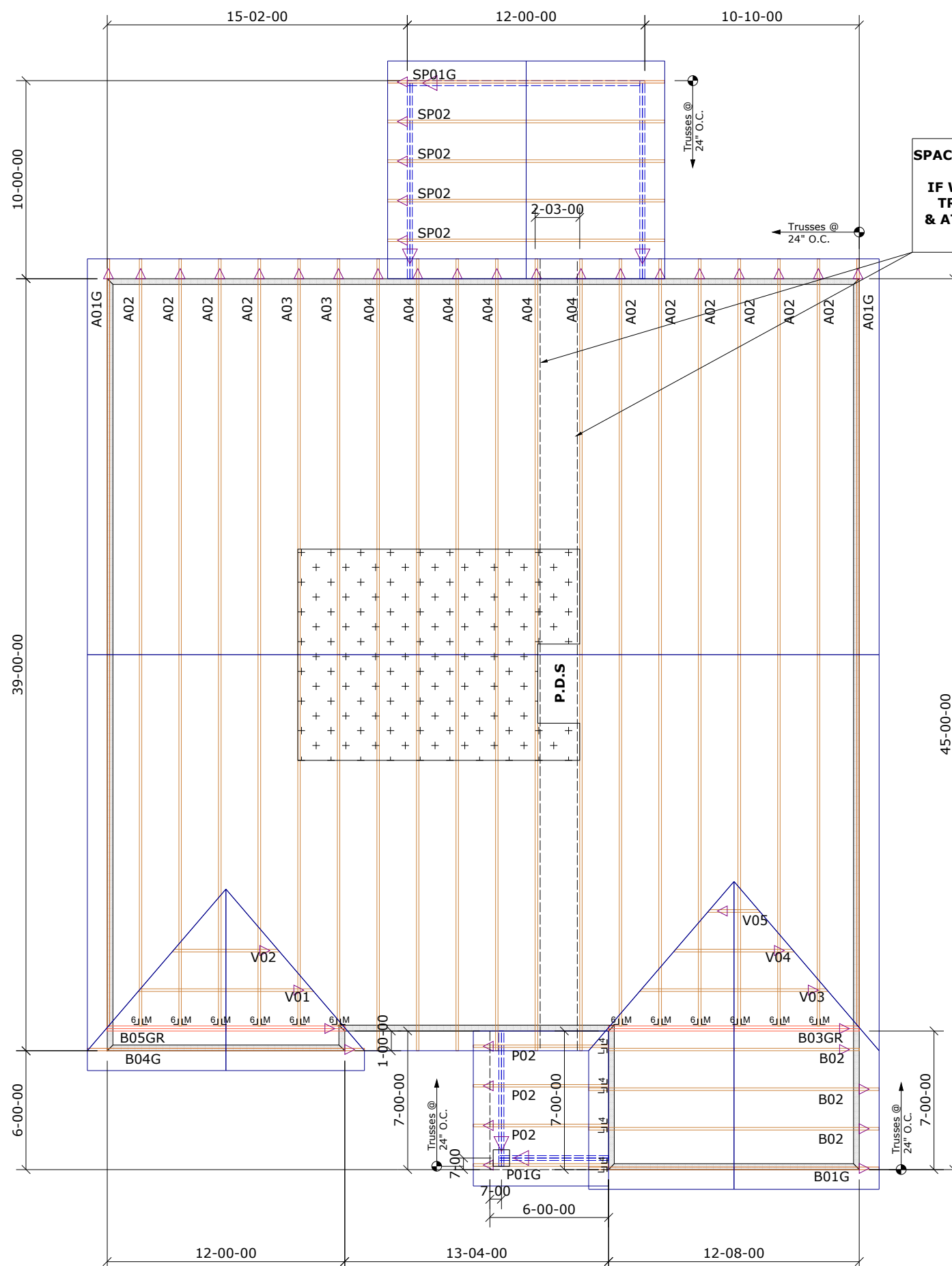
- All hangers are to be Simpson or equivalent U.N.O.
- Use Manufacturer's specifications for all hanger connections U.N.O.
- Use 10d x 1 1/2" Nails in hanger connections to single ply roof girder trusses.

Floor Notes:

- Shift truss as required to avoid plumbing traps.
- Installation Contractor and/or Field Supervisor are to verify all dimensions, trap locations, and options prior to installation

Dimension Notes:

- Drawing not to scale. Do not scale dimensions



SPACE TRUSSES 2' O.C. UNLESS A WIDE P.D.S. IS GOING TO BE INSTALLED. IF WIDE P.D.S. IS USED, FOLLOW SPECIAL TRUSS SPACING AS NOTED ON LAYOUT, & ATTACH 2X4 LEDGERS TO TOP & BOTTOM CHORDS W/ 12d NAILS @ 16" O.C.

Hanger List		All Tie Downs H2.5A Unless noted	
4	LUS24	U14	
12	HTU26	M18	

Special Items List

Misc Material

MATTAMY HOMES			
SHENANDOAH	Elev:	FARMHOUSE	
PROVIDENCE CREEK			
WAKE	NC	Lot:	58
Appwright #			
SCREEN PORCH		Code:	IRC 2015
Loading:			
		T.C.L.L.	20.0 lb/ft2
Designed By: MWA		T.C.D.L	10.0 lb/ft2
Layout: SHENANDOAH		B.C.L.L.	0.0 lb/ft2
L/O Date: 01/18/2022		B.C.D.L.	10.0 lb/ft2

Revision History		Wind:	
Rev1:	xx/xx/xx	M.P.H.	115
Rev2:	xx/xx/xx	Exposure Category	
Rev3:	xx/xx/xx	B	
Pick Ticket:	---	Job No.:	---
Sales No.:	---	Acct No.:	---

Hatch Legend	
	Attic Room
	Volume Ceiling
	Stick Framing

