

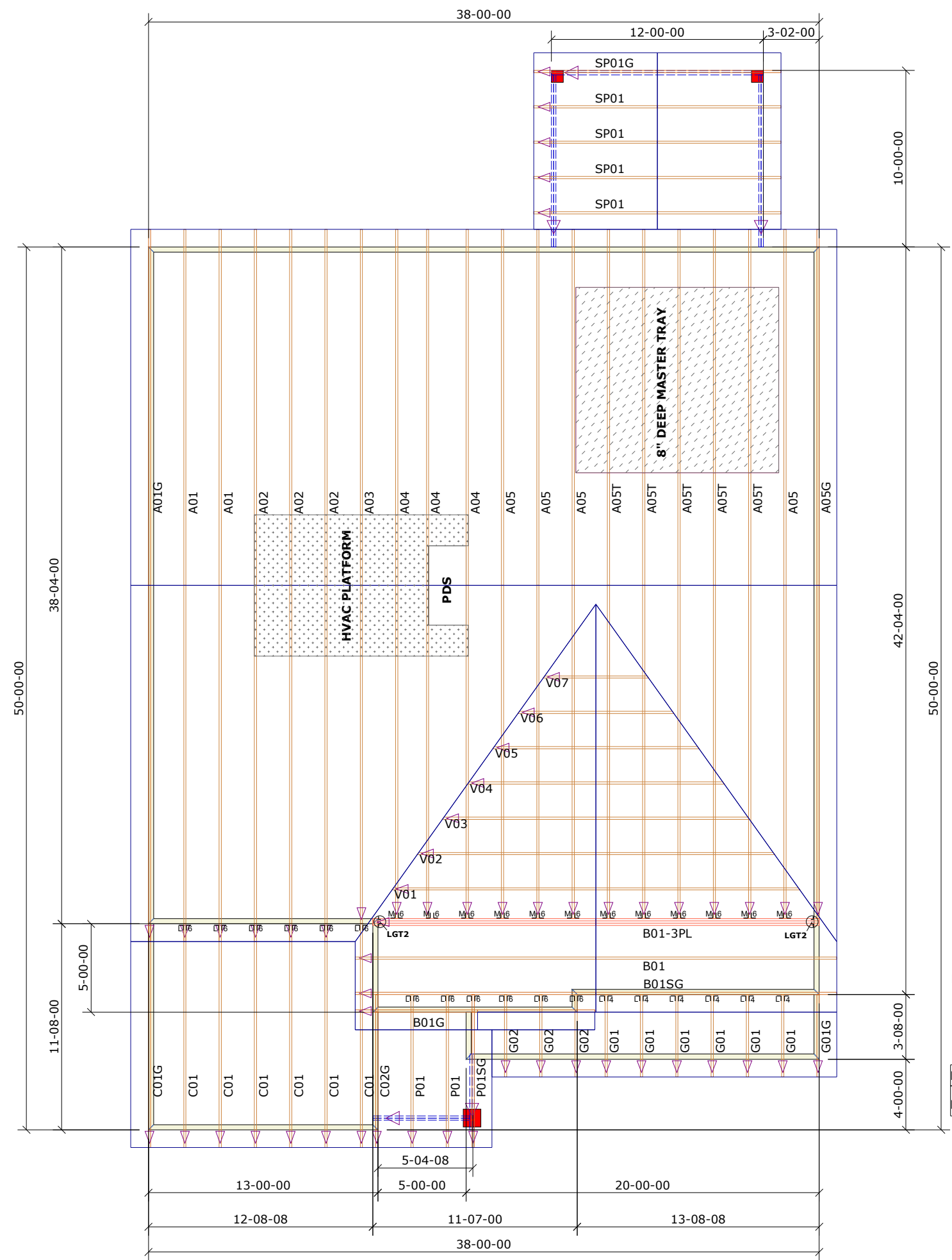
General Notes:
 - Per ANSI/TPI 1-2002 all " Truss to Wall" connections are the responsibility of the Building Designer, not the Truss Manufacturer.
 - Dimensions are Feet-Inches- Sixteenths.

- Trusses are to be 24" o.c. unless noted otherwise (U.N.O.)
 - Trusses are not designed to support brick U.N.O.
 - Do not cut or modify trusses without first contacting Builders FirstSource.
 - Immediately contact Builders FirstSource if trusses are damaged.

Connection Notes:
 - All hangers are to be Simpson or equivalent U.N.O.
 - Use Manufacturer's specifications for all hanger connections U.N.O.
 - Use 10d x 1 1/2" Nails in hanger connections to single ply roof girder trusses.

Floor Notes:
 - Shift truss as required to avoid plumbing traps.
 - Installation Contractor and/or Field Supervisor are to verify all dimensions, trap locations, and options prior to installation

Dimension Notes:
 - Drawing not to scale. Do not scale dimensions



9'-1-2" 1ST FLOOR
 14" FLOOR
 8'-1-2" 2ND FLOOR

NOTE: LEFT END OF TRUSS AS SHOWN ON TRUSS DETAIL DRAWINGS ARE INDICATED BY TRIANGLE ICONS.

NOTE: LEFT END OF TRUSS AS SHOWN ON TRUSS DETAIL DRAWINGS ARE INDICATED BY TRIANGLE ICONS. △◁▷▷

Space trusses 2' o.c. unless a wide P.D.S. is going to be installed. If wide P.D.S. is used, follow special truss spacing as noted on layout, & attach 2x4 ledgers to Top & Bottom chords w/12d nail @ 16" o.c.

Hanger List		All Tie Downs H2.5A Unless noted	
12	HTU26	MJ18	
2	LGT2	JL	
6	LUS24	L14	
12	LUS26	L18	

Special Items List

Misc Material

MATTAMY HOMES			
Spirit 40's Sequoia	Elev:	FARMHOUSE	
PROVIDENCE CREEK			
-	NC	Lot:	98
Appwright #			
BASE/RH			
Code:		IRC 2015	
Loading:			
T.C.L.L.		20	
T.C.D.L.		10	
B.C.L.L.		0	
B.C.D.L.		10	
Designed By:	TG	T.C.D.L.	10
Layout:	PC98	B.C.L.L.	0
L/O Date:	12/07/21	B.C.D.L.	10
Revision History			
Rev1:	xx/xx/xx	M.P.H.	115 MPH
Rev2:	xx/xx/xx	Exposure Category	
Rev3:	xx/xx/xx	EXPOSURE B	
Pick Ticket:	-	Job No.:	PC98
Sales No.:	-	Acct No.:	-

Hatch Legend	
	Attic Room
	Volume Ceiling
	Stick Framing

