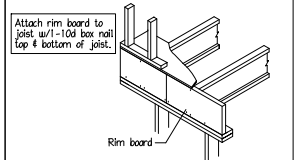
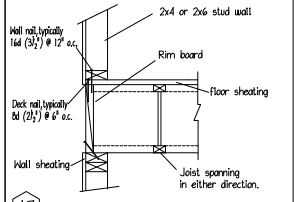


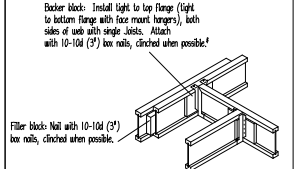
A1



A3 Must have 1 3/4" minimum joist bearing at ends. For information on lateral load capacities refer to literature or load designer.

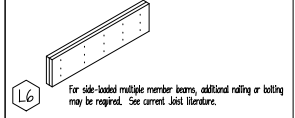


A7

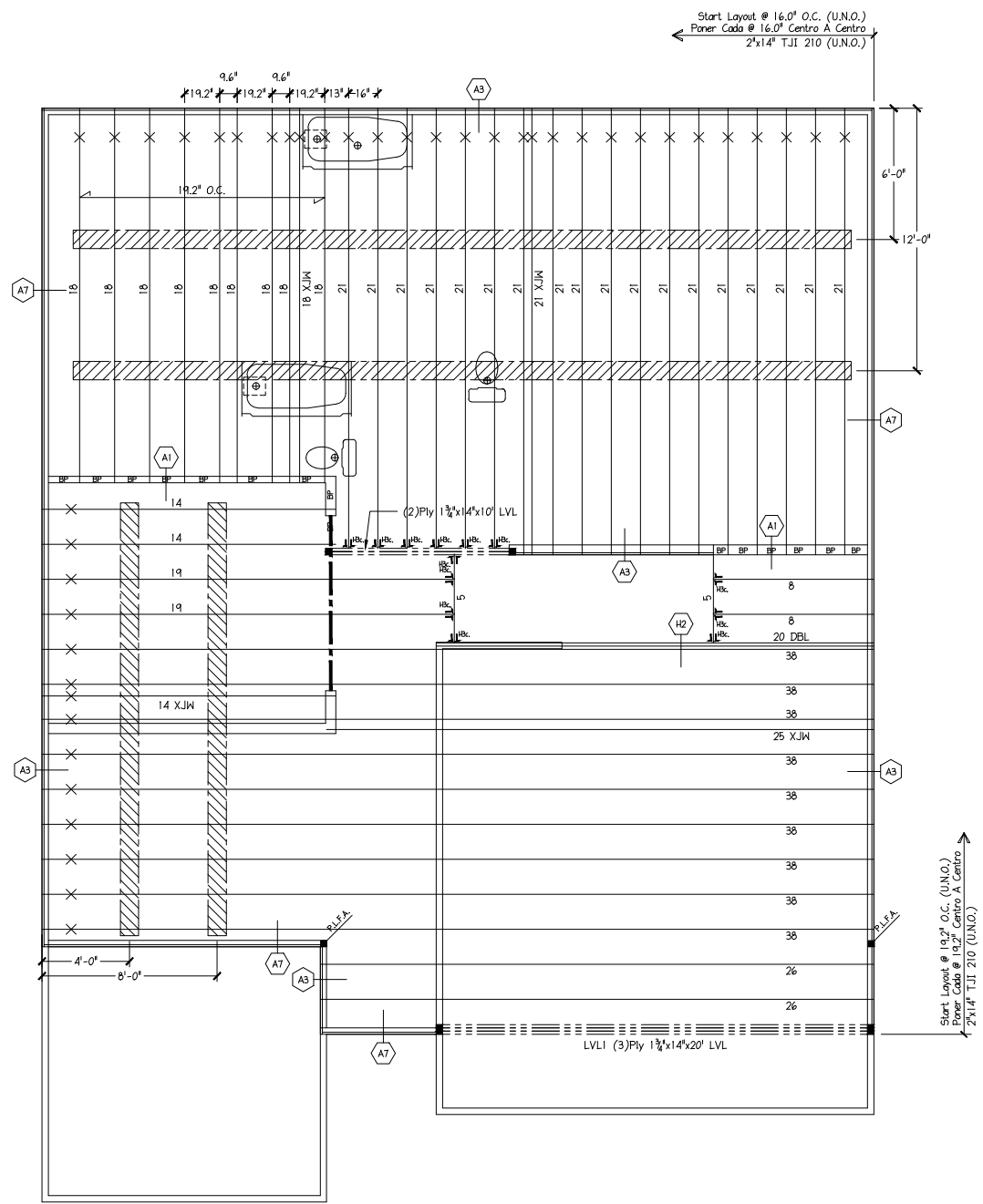


H2

CONNECTION OF MULTIPLE PIECES OF TOP-LOADED BEAMS
LVL & PSL (1 3/4" Width Pieces)
• Minimum of 2 rows 16d (3 1/2") nails at 12" o.c.
• Minimum of 3 rows 16d (3 1/2") nails at 12" o.c. for 14", 11", 10" beams.
• Multiple pieces of LVL & PSL can be nailed or bolted together to form a header or beam of the required size, up to a maximum width of 7 inches. Minimum of 2 rows 1/2" bolts at 24" o.c. staggered.



L6 For side-bolted multiple member beams, additional nailing or bolting may be required. See current joist literature.



2ND FLOOR I-JOIST PLACEMENT PLAN
MATTAMY HOMES - LOT 98 PROVIDENCE CREEK - SEQUOIA

ENGINEERED WOOD MATERIAL LIST

MATTAMY HOMES
LOT 98 PROVIDENCE CREEK - SEQUOIA
2ND FLOOR I-JOIST PLACEMENT PLAN

MARK	QTY	CUT LENGTH	DESCRIPTION	(Notes)
5	2	5'-0"	2" x 14" TJI 210	
8	2	8'-0"	2" x 14" TJI 210	
14a	3	14'-0"	2" x 14" TJI 210 < 2 >	
18a	9	18'-0"	2" x 14" TJI 210 < 2 >	
18b	1	18'-0"	2" x 14" TJI 210 < 2 >	
19a	2	19'-0"	2" x 14" TJI 210 < 2 >	
20	2	20'-0"	2" x 14" TJI 210	
21a	19	21'-0"	2" x 14" TJI 210 < 2 >	
25	1	25'-0"	2" x 14" TJI 210	
26	2	26'-0"	2" x 14" TJI 210	
38a	9	38'-0"	2" x 14" TJI 210 < 2 >	(Total 1144')

BEAMS AND HEADERS

ITEM	QTY	UNIT	DESCRIPTION
LVL	2	10'-0"	1 3/4" x 14" LVL 2.0E (Flush)
LVL1	3	20'-0"	1 3/4" x 14" LVL 2.0E (Flush)

ACCESSORIES & OTHER MATERIALS (Simpson Hangers)

ITEM	QTY	UNIT	DESCRIPTION
14" Rim	151	LF	1 1/2"x14" TJ Rim 13 pcs@12' or 10 pcs@16'
BP	15	1'-5 1/8"	14" Blocking Panel [Total 30']
Hbc	13	PCS	IUS2.06/14 Single Face Pmt Hanger
10CUT14C	86	HOLE	10" Circular Cutout
TJLAYOUT	1	PCS	TJI Placement Layout
TJGUIDE	1	PCS	TJI Installation Guide

SEE MATERIAL LIST FOR DEPTH, GRADE & LENGTH
INDICATED I-XEST
INDICATED TYPED/STANDARD FOR. LVL
INDICATED FLOOR-PLAN LVL
INDICATED PARALLEL PCL
INDICATED SQUARE LVL
INDICATED A SECTION FROM THE INSTALLATION GUIDE SHEET IS ALSO SHOWN ON THIS SHEET
LOAD BEARING WALL ABOVE = |||
BEAM BY CHAINS
EXTRA JOIST ADDED
EXTRA JOIST (1) UNDER HALL
DOUBLE JOIST (2)
TYPED JOIST (2)
JOIST BRIDGE PANEL
CONCENTRATED POINT LOAD FROM ABOVE
1" UP OR 1" UP WITH BOARD
CONCENTRATED POINT LOAD FROM ABOVE
DEEP BEAM
FLUSH BEAM

THIS SHOP DRAWING IS BASED ON THE FOLLOWING
PROJECT LOCATION :
PROJECT NUMBER :
ARCHITECT DWG# BY :
ARCH LATEST REVISION :
CHECKED BY :
STRUCTURAL REVIEW BY :
DATE :

DESIGN DATA

LIVE	40 PSF
DEAD	10 PSF
TOTAL LOAD	= 50 PSF
STRESS DURATION	= 100%
DEFLECTION CRITERIA	= (L/480)

CONSTRUCTION NOTES
1. READ MANUFACTURER'S INSTALLATION GUIDE BEFORE INSTALLING. COORDINATE APPROVED GUIDE WITH ARCHITECT'S INTENT.
2. ALL JOIST ENDS MUST BE FULLY SUPPORTED BY WALLS OR BEAMS. JOIST ENDS MUST NOT BE CUT OR ORANGE ENDED.
3. JOIST ENDS MUST BE FULLY SUPPORTED BY WALLS OR BEAMS. JOIST ENDS MUST NOT BE CUT OR ORANGE ENDED.
4. JOIST ENDS MUST BE FULLY SUPPORTED BY WALLS OR BEAMS. JOIST ENDS MUST NOT BE CUT OR ORANGE ENDED.
5. JOIST ENDS MUST BE FULLY SUPPORTED BY WALLS OR BEAMS. JOIST ENDS MUST NOT BE CUT OR ORANGE ENDED.
6. JOIST ENDS MUST BE FULLY SUPPORTED BY WALLS OR BEAMS. JOIST ENDS MUST NOT BE CUT OR ORANGE ENDED.
7. JOIST ENDS MUST BE FULLY SUPPORTED BY WALLS OR BEAMS. JOIST ENDS MUST NOT BE CUT OR ORANGE ENDED.
8. JOIST ENDS MUST BE FULLY SUPPORTED BY WALLS OR BEAMS. JOIST ENDS MUST NOT BE CUT OR ORANGE ENDED.
9. JOIST ENDS MUST BE FULLY SUPPORTED BY WALLS OR BEAMS. JOIST ENDS MUST NOT BE CUT OR ORANGE ENDED.
10. JOIST ENDS MUST BE FULLY SUPPORTED BY WALLS OR BEAMS. JOIST ENDS MUST NOT BE CUT OR ORANGE ENDED.

Builders FirstSource

1-800-551-7273
www.buildersfirstsource.com

BUILDER: MATTAMY HOMES
MODEL: LOT 98 PROVIDENCE CREEK - SEQUOIA
2ND FLOOR I-JOIST PLACEMENT PLAN
DATE: WEDNESDAY, 8 DECEMBER 2021 - 2:00 PM
FILE: I:\MATTAMY HOMES\LOT 98 PROVIDENCE CREEK - SEQUOIA.DWG

DRAWN BY: NJH DATE: 12/8/21
SHEET: 1 OF 1 SHEETS

POINT LOAD FROM ABOVE (P.L.F.A.)
USE SOLID BLOCKING TO TRANSFER LOAD FROM ABOVE TO FOUNDATION
DO NOT CUT ORANGE END
NO CORTE EL COLOR NARANJA
"X" INDICATES ORANGE END
"X" INDICAR EL COLOR NARANJA

