

COMMENTS: _____

LANDSCAPE POSITIONS

- R-RIDGE
- S-SHOULDER SLOPE
- L-LINEAR SLOPE
- FS-FOOT SLOPE
- N-NOSE SLOPE
- H-HEAD SLOPE
- CC-CONCLAVE SLOPE
- CV-CONVEX SLOPE
- T-TERRACE
- FP-FLOOD PLAN

STRUCTURE

- SG-SINGLE GRAIN
- M- MASSIVE
- CR-CRUMB
- GR-GRANULAR
- SBK-SUBANGULAR BLOCKY
- ABK-ANGULAR BLOCKY
- PL-PLATY
- PR-PRISMATIC

GROUP

TEXTURES

.1955 LTAR

CONSISTENCE MOIST

WET

- | | | | | |
|-----|---|-----------|--|---|
| I | S-SAND
LS-LOAMY SAND | 1.2 - 0.8 | VFR-VERY FRIABLE
FR-FRIABLE
FI-FIRM
VFI-VERY FIRM
EFI-EXTREMELY FIRM | NS-NON-STICKY
SS-SLIGHTLY STICKY
S-STICKY
VS-VERY STICKY
NP-NON-PLASTIC
SP-SLIGHTLY STICKY
P-PLASTIC
VP-VERY PLASTIC |
| II | SL-SANDY LOAM
L-LOAM | 0.8 - 0.6 | | |
| III | SI-SILT
SIL-SILT LOAM
CL-CLAY LOAM
SCL-SANDY CLAY LOAM | 0.6 - 0.3 | | |
| IV | SIC-SILTY CLAY
C-CLAY
SC-SANDY CLAY | 0.4 - 0.1 | | |

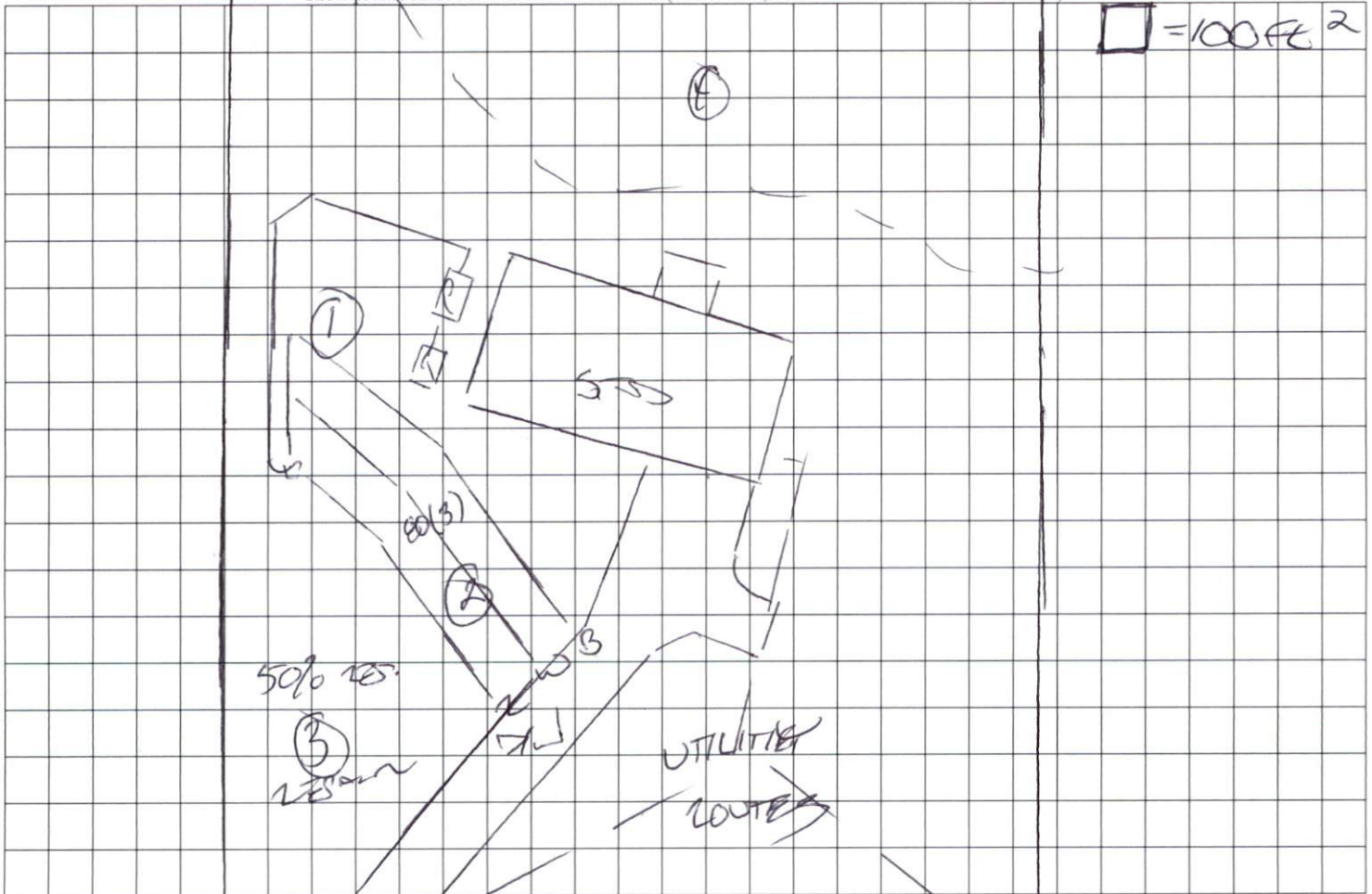
MINERALOGY

- SLIGHTLY EXPANSIVE
- EXPANSIVE

UNSUITABLE
SOILS

Show profile locations and other site features (dimensions, references or benchmark, and North)

□ = 100 FE²



JO CO. 257. (521551)