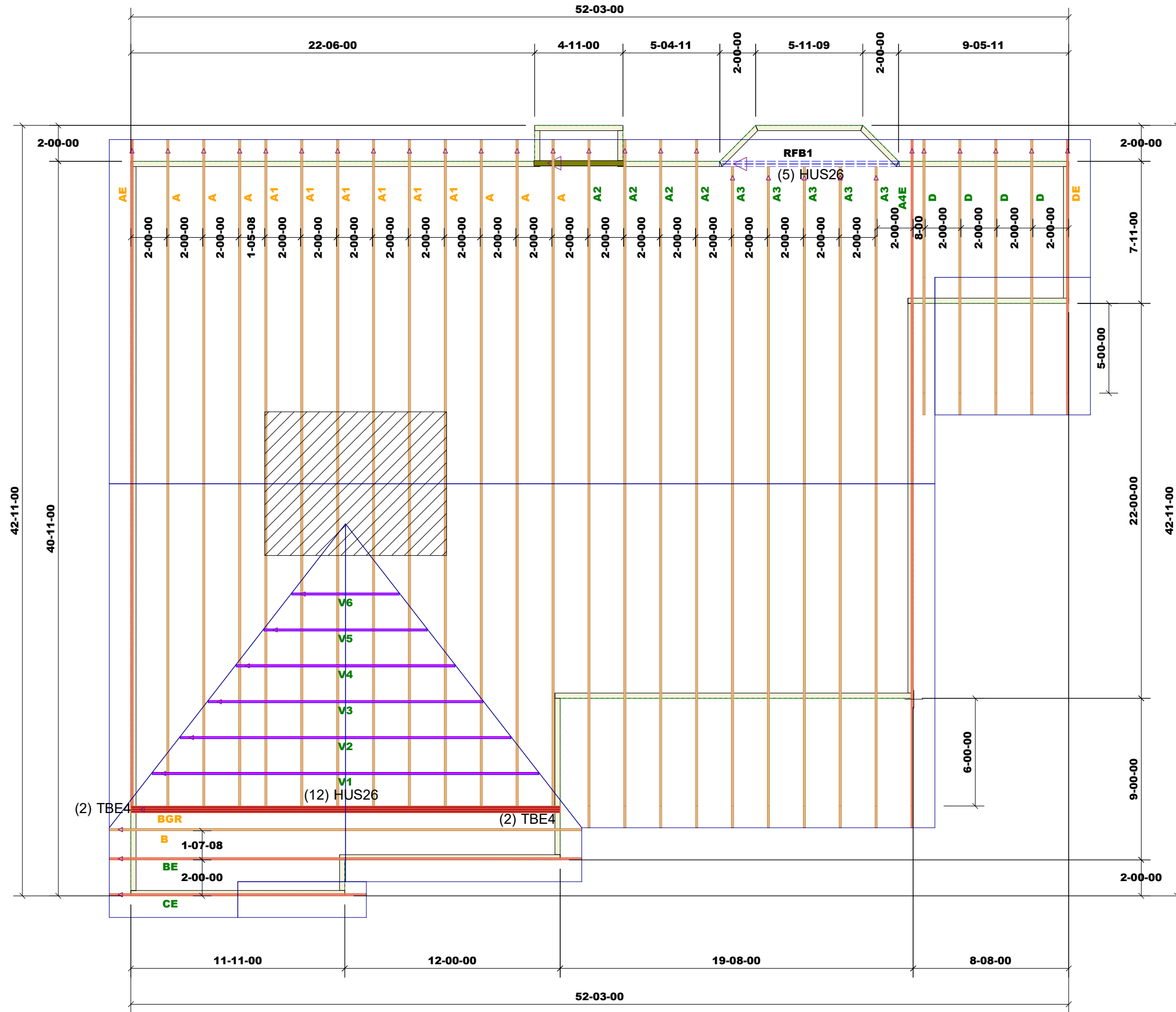


THIS LAYOUT IS INTENDED FOR THE PURPOSE OF TRUSS LOCATION AND PLACEMENT ONLY. REFER TO THE BUILDING PLANS FOR ACTUAL BUILDING CONSTRUCTION.



DEDICATED TO QUALITY AND EXCELLENCE  
 200 EMMETT ROAD  
 DUNN, NORTH CAROLINA 28334  
 PHONE: 910-892-8400



PROJECT: Freedom Solar Clayton Plan  
 CUSTOMER: FREEDOM CONSTRUCTION  
 MODEL: Clayton

QUOTE #: 2100795  
 PRINT DATE: 9/29/2021  
 DRAWN BY: Rodney Evans  
 SCALE: N.T.S

TOP LIVE LOAD: 20.0 lb/ft<sup>2</sup>  
 TOP DEAD LOAD: 10.0 lb/ft<sup>2</sup>  
 BOTTOM DEAD LOAD: 10.0 lb/ft<sup>2</sup>  
 WIND SPEED: 130 mph

GENERAL NOTES:  
 - DO NOT CUT OR MODIFY TRUSSES  
 - TRUSSES ARE SPACED 24" ON CENTER UNLESS OTHERWISE NOTED  
 - REFER TO THE INDIVIDUAL TRUSS DESIGN DRAWINGS FOR THE LOCATION OF LATERAL BRACING AND MULTI-PLY CONNECTION REQUIREMENTS.  
 - PER ANSI TPI 1-2002 THE TRUSS ENGINEER IS RESPONSIBLE FOR TRUSS TO TRUSS CONNECTIONS AND TRUSS PLY TO PLY CONNECTIONS. THIS TRUSS PLAN RECOMMENDS TRUSS TO BEARING CONNECTIONS AND TRUSS TO BEAM CONNECTIONS WHICH SHALL BE REVIEWED BY THE BUILDING DESIGNER. IT IS THE RESPONSIBILITY OF THE BUILDING DESIGNER TO RESOLVE ALL ROOF FORCES ADEQUATELY TO THE FOUNDATION.

Products					
PlotID	Length	Product	Plies	Net Qty	Fab Type
RFB1	12-00-00	1-3/4" x 9-1/4" VERSA-LAM@ 2.0 3100 SP	2	2	MFD

ROOFAREA: 2351

1st Level Roof Area	2nd Level Roof Area
0	0