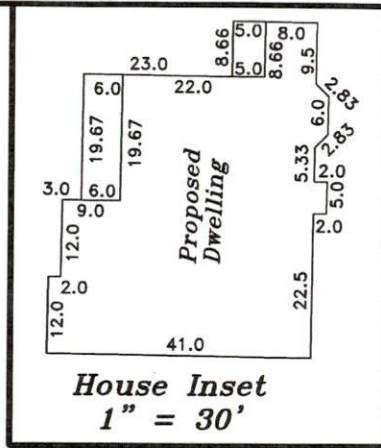


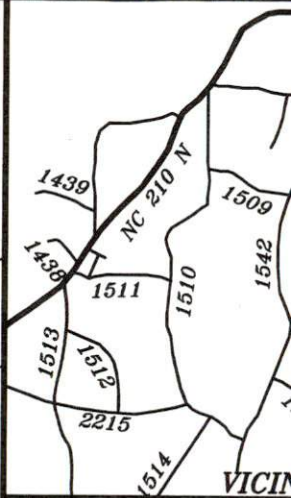
# Proposed House Location

SR 1544 Guy Road  
60' Public R/W



Graham J. Holland  
DB 1630, Pg. 926

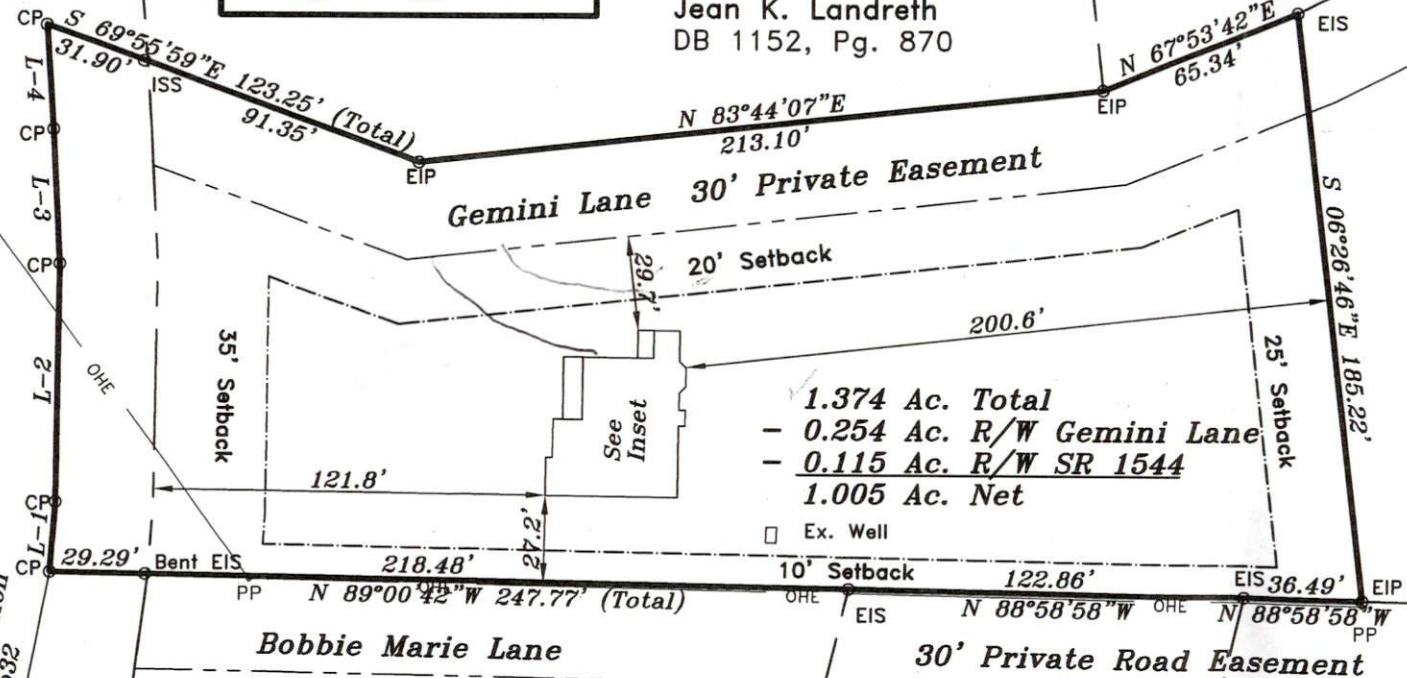
Jean K. Landreth  
DB 1152, Pg. 870



56 Gemini Lane  
Deed Book  
Plat Cabinet  
PIN: 0682  
Owned by, Survey  
**Max  
Barbara**

Black River Tw  
Scale: 1" = 60'  
Surveyed  
**STANCIL &**  
Professional Land  
P.O. Box 730,  
919-639-2133  
stancilsur

Magnetic North  
Map Number 2005-427



1.374 Ac. Total  
- 0.254 Ac. R/W Gemini Lane  
- 0.115 Ac. R/W SR 1544  
**1.005 Ac. Net**

Bobby L. Byrd  
Brenda P. Byrd  
DB 1324, Pg. 660  
Map #98-470

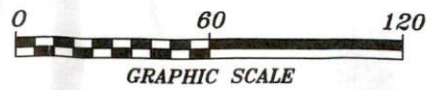
**Bobbie Marie Lane**

Rhonda S. Doorman  
Tommy A. Brown  
DB 3292, Pg. 232  
Map #2005-427

Jonathan Clark  
DB 3532, Pg. 349  
Map #2005-427

Marc Seelinger  
Maureen F. Seelinger  
DB 2091, Pg. 564

Course	Bearing	Distance
L-1	N 04°20'33" E	21.95'
L-2	N 00°41'47" E	74.81'
L-3	N 02°59'36" W	42.07'
L-4	N 03°55'59" W	32.77'



830' ± to C/L Intersection  
SR 1544 and SR 1532

1260

NOT FOR I