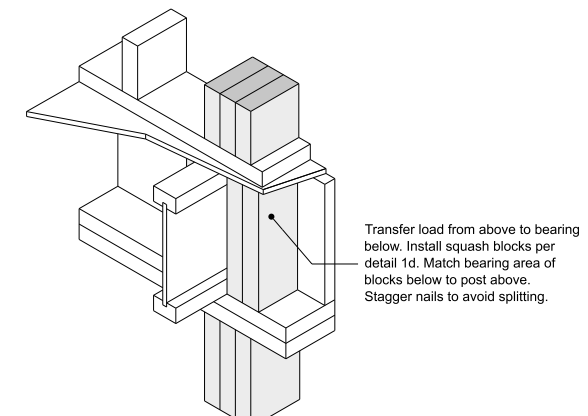
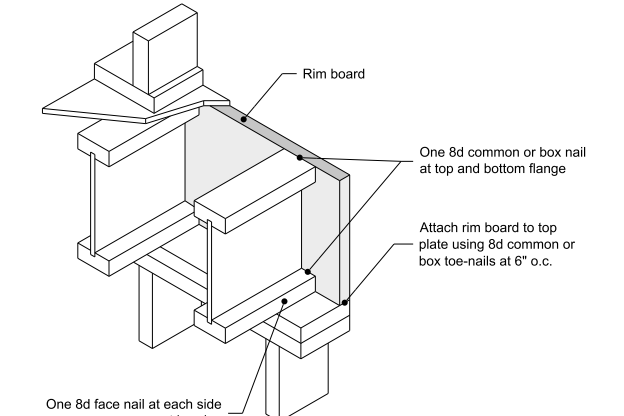


16

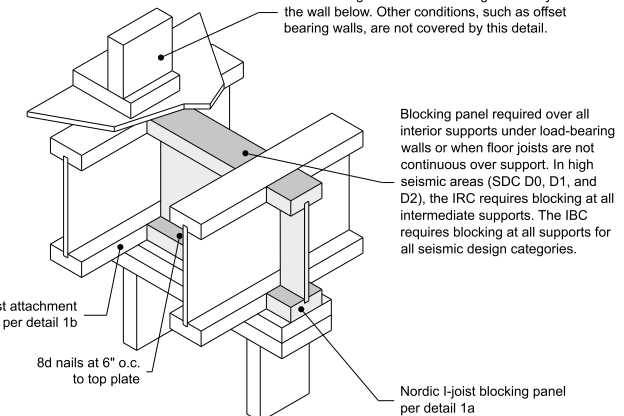


17



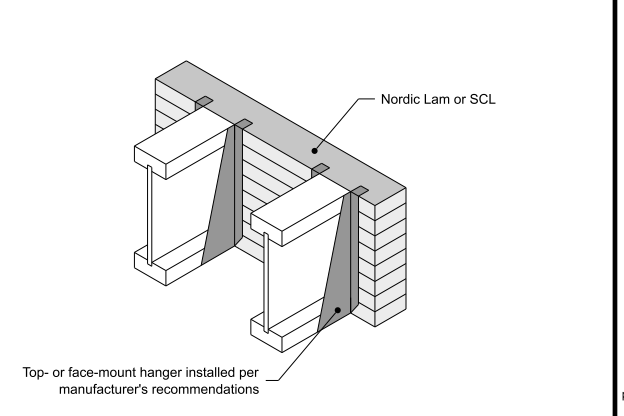
Note:
1. To avoid splitting flange, start nails at least 1-1/2 inch from end of joist. Nails may be driven at an angle to avoid splitting of bearing plate.

18



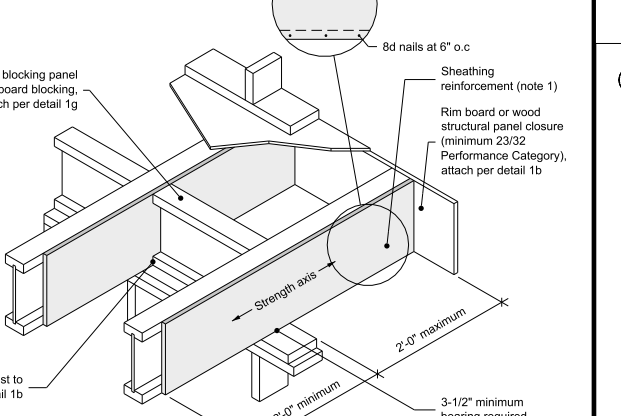
Note:
1. An occasional blocking panel (one per line of blocking) may be left out for the passage of plumbing or ventilation ducts. For other applications, contact Nordic Structures.
2. For other options, see detail 1b to 1g.

19



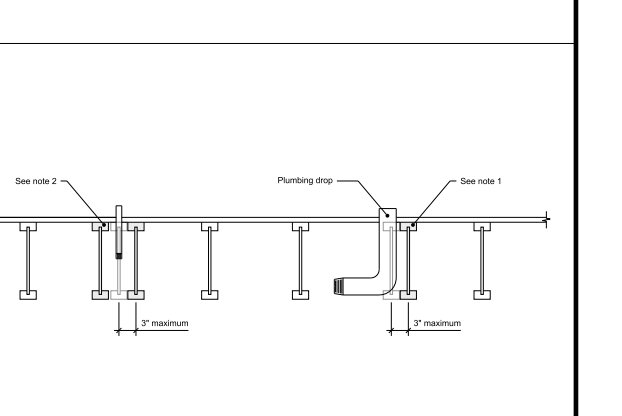
Note:
1. LVL hanger sides laterally support the top flange. Bearing stiffeners shall be used.
2. For nailing schedules for multiple Nordic Lam or SCL beams, see the manufacturer's installation guide.

20



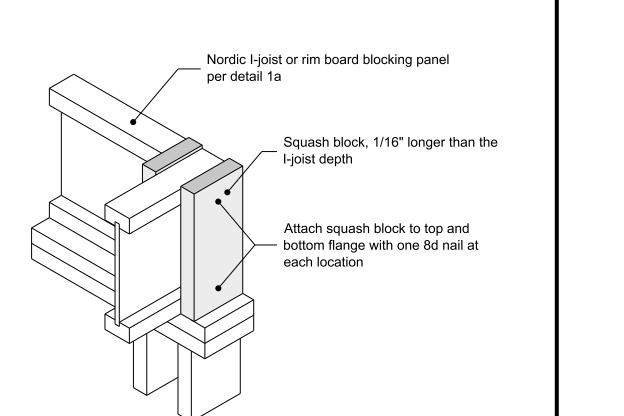
Note:
1. APA Rated Sheathing 4024 or APA Rated Plywood 24 or minimum 23/32 Performance Category required on one side of plate. Depth shall extend the full height of the plate. Use with 8d nails at 6 inches o.c. Top and bottom flange tied with two green horizontal straps (one tied to plate at all supports per detail 1a).
2. Construction joints shall be properly spaced to support all design loads. Refer to table 4.1 of the Nordic LVL Technical Guide for details.
3. Blocking is required along the cantilever supports.
4. Refer to detail 1b for top or lateral supports using blocking panels.

21



Note:
1. The blocking schedule and blocking LVL plates are subject to 1/2 inch (1/2 inch) of the top edge of the floor joist.
2. For other options, see detail 1b to 1g.

22



Note: All non-structural roof members are not included in this design quote.

Note: Beam sizes may have been re-designed due to design loads.

BONUS ROOM Joist (Flush)

Label	Description	Width	Depth	Qty	Plies	Pcs	Length
J1	NI-80	3.5	14			3	24-0-0
J2	NI-80	3.5	14			18	26-0-0

LVL/LSL (Dropped)

Label	Description	Width	Depth	Qty	Plies	Pcs	Length
D1	2.0E Rigidlam LVL	1.75	18	1	2	2	22-0-0

Rim Board

Label	Description	Width	Depth	Qty	Plies	Pcs	Length
R1	Norbord Rimboard 1.125 X 14	1.125	14			9	12-0-0



(800) 700-4788
techplans@eewp.com

Installation Guide

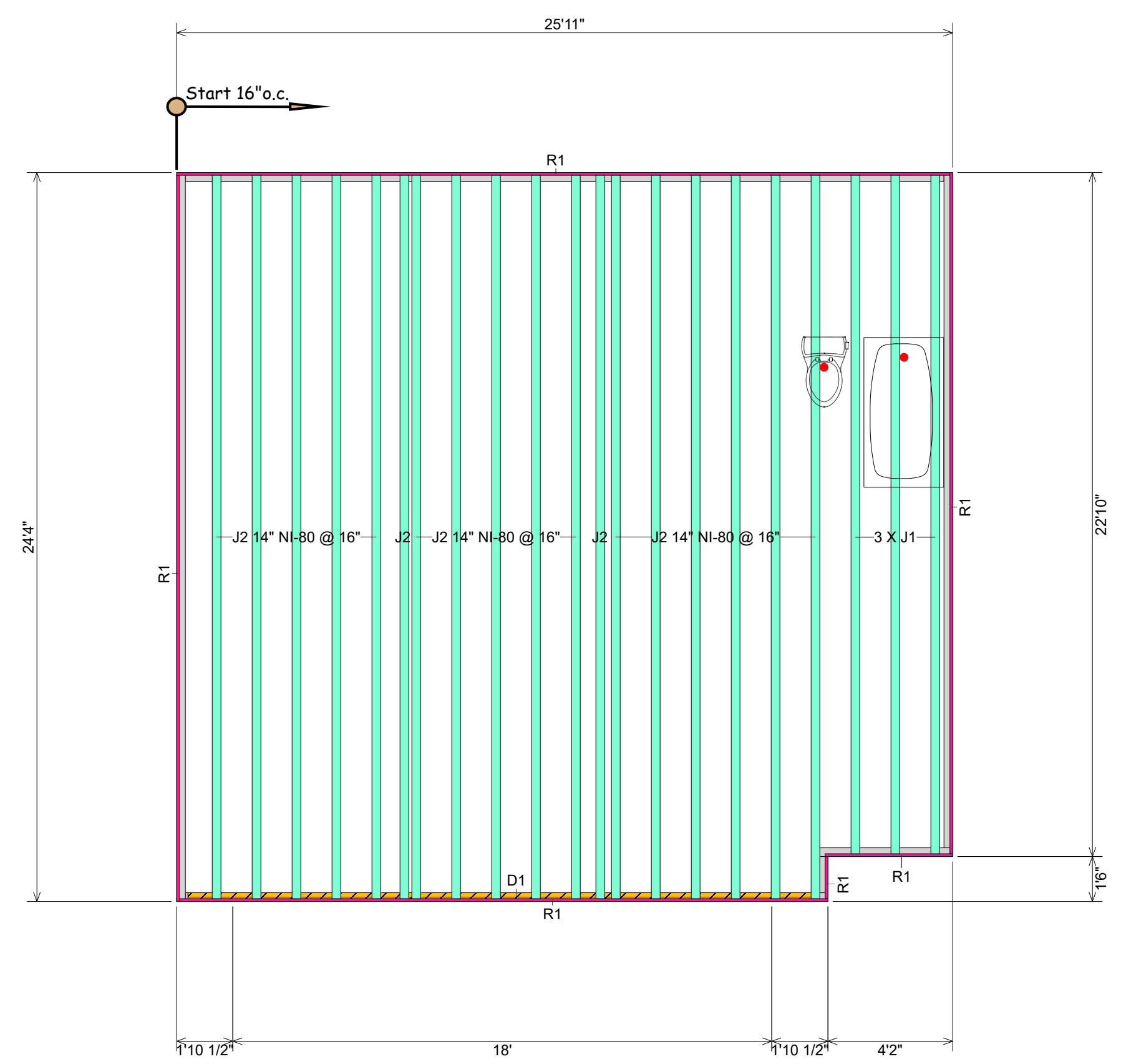
Scan with your Smart Phone or visit:
www.eewp/resources

- NOTES:**
- Joist layout shown is to assist with estimate and joist location. Contractor is responsible to see that joist and LVL locations do not interfere with plumbing or mechanical equipment.
 - Please review plans prior to order any materials.
 - Refer to details in the installation guide prior to construction.
 - This design layout is to be used as a guide only and is meant to be used in conjunction with the architectural and structural drawings, not to replace them.
 - BBO = Beam By Others
 - EGB = End Grain Bearing
 - SFB = Steel Fitch Plate Beam By Others
 - BHB = Better Header Beam

Every effort has been made to be as accurate as possible with this design layout. Due to lack of detail and information on many plans and the variance of framing techniques in the industry, where necessary, applicable standard practices in the construction industry have been utilized. Therefore, it is imperative that the lumber dealer and the customer review these drawings for layout, bearing locations, point loads, and special conditions prior to order any materials. Failure to do so will constitute acceptance as shown. Any changes, additions, or deletions will be at the expense of the lumber dealer and/or the contractor.

Legend

Wall	Wall
Norbord Rimboard 1.125 X 14	Norbord Rimboard 1.125 X 14
NI-80 14	NI-80 14
2.0E Rigidlam LVL 1.75 X 18 (Dropped)	2.0E Rigidlam LVL 1.75 X 18 (Dropped)



Description
Delfino Flores Job

Dealer
84 Durham

Sales Rep
David Robinson

Designer
John Pope

Revisions:

Scale 1/4 inch : 1 ft

BONUS ROOM	
Design Method	ASD (USA)
Building Code	IRC 2018
Floor Loads	
Live	40
Dead	15
Deflection Joist	
LL Span / L	480
TL Span / L	240
Deflection Flush Girder	
LL Span / L	360
TL Span / L	240
Deflection Dropped Girder	
LL Span / L	360
TL Span / L	240
Deflection Header	
LL Span / L	360
TL Span / L	240
Decking	
	OSB
	23/32 APA Rated Sturd-I-Floor
Fastener	Nailed & Glued
Project	
22-0793EF	