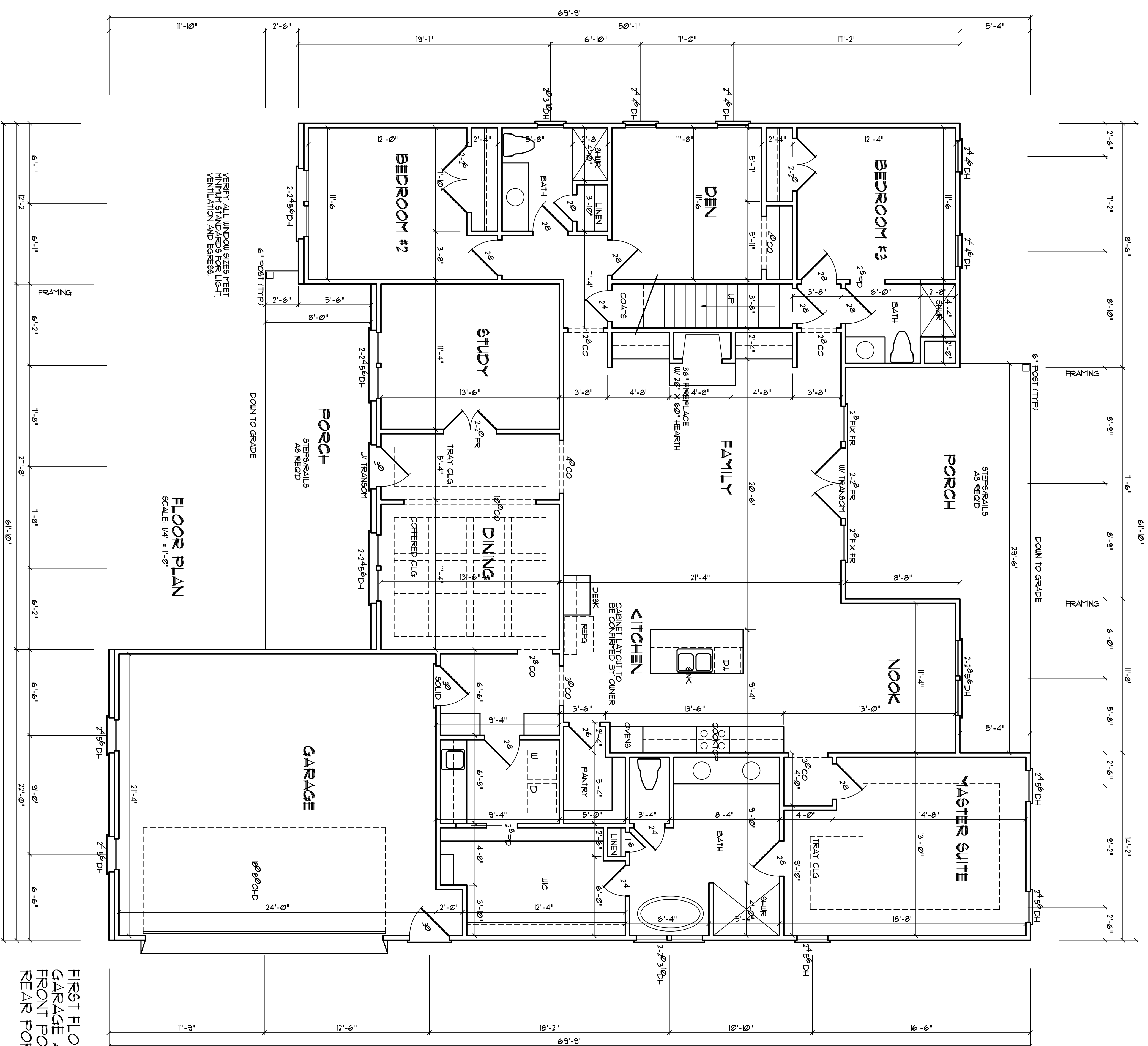


BUILDER SHALL VERIFY ALL DIMENSIONS AND CONDITIONS AT TIME OF CONSTRUCTION.
 ALL CONSTRUCTION SHALL CONFORM TO THE 2018 EDITION OF THE NC STATE BUILDING CODE. CODES GOVERN OVER DRAWINGS. DIMENSIONS GOVERN OVER SCALE.
 VERIFY ALL MECHANICAL REQUIREMENTS BEFORE REPAIRING.
 YUNCANNON DESIGNING DOES NOT ASSUME LIABILITY FOR ANY DEVIATION OF OR CONSTRUCTION METHODS OF THESE PLANS.



FLOOR PLAN
 SCALE: 1/4" = 1'-0"

- NOTE**
- 1) 3'-0" CEILING HEIGHT
 - 2) FINISH LINCOLN AT 1/2" ABOVE FINISHED FLOOR
 - 3) DOOR & ALL JOISTS PARALLEL TO GRADE
 - 4) USE 2" MINIMUM CLEARANCE AT THE GARAGE DOOR
 - 5) USE 2" MINIMUM CLEARANCE AT THE GARAGE DOOR
 - 6) USE 2" MINIMUM CLEARANCE AT THE GARAGE DOOR
 - 7) USE 2" MINIMUM CLEARANCE AT THE GARAGE DOOR
 - 8) USE 2" MINIMUM CLEARANCE AT THE GARAGE DOOR
 - 9) USE 2" MINIMUM CLEARANCE AT THE GARAGE DOOR
 - 10) USE 2" MINIMUM CLEARANCE AT THE GARAGE DOOR
 - 11) USE 2" MINIMUM CLEARANCE AT THE GARAGE DOOR
 - 12) USE 2" MINIMUM CLEARANCE AT THE GARAGE DOOR
 - 13) USE 2" MINIMUM CLEARANCE AT THE GARAGE DOOR
 - 14) USE 2" MINIMUM CLEARANCE AT THE GARAGE DOOR
 - 15) USE 2" MINIMUM CLEARANCE AT THE GARAGE DOOR
 - 16) USE 2" MINIMUM CLEARANCE AT THE GARAGE DOOR
 - 17) USE 2" MINIMUM CLEARANCE AT THE GARAGE DOOR
 - 18) USE 2" MINIMUM CLEARANCE AT THE GARAGE DOOR
 - 19) USE 2" MINIMUM CLEARANCE AT THE GARAGE DOOR
 - 20) USE 2" MINIMUM CLEARANCE AT THE GARAGE DOOR
 - 21) USE 2" MINIMUM CLEARANCE AT THE GARAGE DOOR
 - 22) USE 2" MINIMUM CLEARANCE AT THE GARAGE DOOR
 - 23) USE 2" MINIMUM CLEARANCE AT THE GARAGE DOOR
 - 24) USE 2" MINIMUM CLEARANCE AT THE GARAGE DOOR
 - 25) USE 2" MINIMUM CLEARANCE AT THE GARAGE DOOR
 - 26) USE 2" MINIMUM CLEARANCE AT THE GARAGE DOOR
 - 27) USE 2" MINIMUM CLEARANCE AT THE GARAGE DOOR
 - 28) USE 2" MINIMUM CLEARANCE AT THE GARAGE DOOR
 - 29) USE 2" MINIMUM CLEARANCE AT THE GARAGE DOOR
 - 30) USE 2" MINIMUM CLEARANCE AT THE GARAGE DOOR
 - 31) USE 2" MINIMUM CLEARANCE AT THE GARAGE DOOR
 - 32) USE 2" MINIMUM CLEARANCE AT THE GARAGE DOOR
 - 33) USE 2" MINIMUM CLEARANCE AT THE GARAGE DOOR
 - 34) USE 2" MINIMUM CLEARANCE AT THE GARAGE DOOR
 - 35) USE 2" MINIMUM CLEARANCE AT THE GARAGE DOOR
 - 36) USE 2" MINIMUM CLEARANCE AT THE GARAGE DOOR
 - 37) USE 2" MINIMUM CLEARANCE AT THE GARAGE DOOR
 - 38) USE 2" MINIMUM CLEARANCE AT THE GARAGE DOOR
 - 39) USE 2" MINIMUM CLEARANCE AT THE GARAGE DOOR
 - 40) USE 2" MINIMUM CLEARANCE AT THE GARAGE DOOR
 - 41) USE 2" MINIMUM CLEARANCE AT THE GARAGE DOOR
 - 42) USE 2" MINIMUM CLEARANCE AT THE GARAGE DOOR
 - 43) USE 2" MINIMUM CLEARANCE AT THE GARAGE DOOR
 - 44) USE 2" MINIMUM CLEARANCE AT THE GARAGE DOOR
 - 45) USE 2" MINIMUM CLEARANCE AT THE GARAGE DOOR
 - 46) USE 2" MINIMUM CLEARANCE AT THE GARAGE DOOR
 - 47) USE 2" MINIMUM CLEARANCE AT THE GARAGE DOOR
 - 48) USE 2" MINIMUM CLEARANCE AT THE GARAGE DOOR
 - 49) USE 2" MINIMUM CLEARANCE AT THE GARAGE DOOR
 - 50) USE 2" MINIMUM CLEARANCE AT THE GARAGE DOOR
 - 51) USE 2" MINIMUM CLEARANCE AT THE GARAGE DOOR
 - 52) USE 2" MINIMUM CLEARANCE AT THE GARAGE DOOR
 - 53) USE 2" MINIMUM CLEARANCE AT THE GARAGE DOOR
 - 54) USE 2" MINIMUM CLEARANCE AT THE GARAGE DOOR
 - 55) USE 2" MINIMUM CLEARANCE AT THE GARAGE DOOR
 - 56) USE 2" MINIMUM CLEARANCE AT THE GARAGE DOOR
 - 57) USE 2" MINIMUM CLEARANCE AT THE GARAGE DOOR
 - 58) USE 2" MINIMUM CLEARANCE AT THE GARAGE DOOR
 - 59) USE 2" MINIMUM CLEARANCE AT THE GARAGE DOOR
 - 60) USE 2" MINIMUM CLEARANCE AT THE GARAGE DOOR
 - 61) USE 2" MINIMUM CLEARANCE AT THE GARAGE DOOR
 - 62) USE 2" MINIMUM CLEARANCE AT THE GARAGE DOOR
 - 63) USE 2" MINIMUM CLEARANCE AT THE GARAGE DOOR
 - 64) USE 2" MINIMUM CLEARANCE AT THE GARAGE DOOR
 - 65) USE 2" MINIMUM CLEARANCE AT THE GARAGE DOOR
 - 66) USE 2" MINIMUM CLEARANCE AT THE GARAGE DOOR
 - 67) USE 2" MINIMUM CLEARANCE AT THE GARAGE DOOR
 - 68) USE 2" MINIMUM CLEARANCE AT THE GARAGE DOOR
 - 69) USE 2" MINIMUM CLEARANCE AT THE GARAGE DOOR
 - 70) USE 2" MINIMUM CLEARANCE AT THE GARAGE DOOR
 - 71) USE 2" MINIMUM CLEARANCE AT THE GARAGE DOOR
 - 72) USE 2" MINIMUM CLEARANCE AT THE GARAGE DOOR
 - 73) USE 2" MINIMUM CLEARANCE AT THE GARAGE DOOR
 - 74) USE 2" MINIMUM CLEARANCE AT THE GARAGE DOOR
 - 75) USE 2" MINIMUM CLEARANCE AT THE GARAGE DOOR
 - 76) USE 2" MINIMUM CLEARANCE AT THE GARAGE DOOR
 - 77) USE 2" MINIMUM CLEARANCE AT THE GARAGE DOOR
 - 78) USE 2" MINIMUM CLEARANCE AT THE GARAGE DOOR
 - 79) USE 2" MINIMUM CLEARANCE AT THE GARAGE DOOR
 - 80) USE 2" MINIMUM CLEARANCE AT THE GARAGE DOOR
 - 81) USE 2" MINIMUM CLEARANCE AT THE GARAGE DOOR
 - 82) USE 2" MINIMUM CLEARANCE AT THE GARAGE DOOR
 - 83) USE 2" MINIMUM CLEARANCE AT THE GARAGE DOOR
 - 84) USE 2" MINIMUM CLEARANCE AT THE GARAGE DOOR
 - 85) USE 2" MINIMUM CLEARANCE AT THE GARAGE DOOR
 - 86) USE 2" MINIMUM CLEARANCE AT THE GARAGE DOOR
 - 87) USE 2" MINIMUM CLEARANCE AT THE GARAGE DOOR
 - 88) USE 2" MINIMUM CLEARANCE AT THE GARAGE DOOR
 - 89) USE 2" MINIMUM CLEARANCE AT THE GARAGE DOOR
 - 90) USE 2" MINIMUM CLEARANCE AT THE GARAGE DOOR
 - 91) USE 2" MINIMUM CLEARANCE AT THE GARAGE DOOR
 - 92) USE 2" MINIMUM CLEARANCE AT THE GARAGE DOOR
 - 93) USE 2" MINIMUM CLEARANCE AT THE GARAGE DOOR
 - 94) USE 2" MINIMUM CLEARANCE AT THE GARAGE DOOR
 - 95) USE 2" MINIMUM CLEARANCE AT THE GARAGE DOOR
 - 96) USE 2" MINIMUM CLEARANCE AT THE GARAGE DOOR
 - 97) USE 2" MINIMUM CLEARANCE AT THE GARAGE DOOR
 - 98) USE 2" MINIMUM CLEARANCE AT THE GARAGE DOOR
 - 99) USE 2" MINIMUM CLEARANCE AT THE GARAGE DOOR
 - 100) USE 2" MINIMUM CLEARANCE AT THE GARAGE DOOR

FIRST FLOOR HEATED AREA: 2633 SQ. FT.
 GARAGE AREA: 551 SQ. FT.
 FRONT PORCH AREA: 224 SQ. FT.
 REAR PORCH AREA: 309 SQ. FT.

Plan No. 2633-10

Jeff/Sharon Willie
 CUSTOM HOME PLANS
 FUQUAY-VARINA, NC - (919) 421-1374

YUNCANNON DESIGNS
 CUSTOM HOME PLANS
 FUQUAY-VARINA, NC - (919) 421-1374

DRAWN BY: UNV
 CHKD BY: UNV
 DATE: 09/16/21
 REVISIONS:
 SHEET
A-3