

NOTES:

1. For all layouts based on plans that have been sealed by an engineer:

This is a placement plan only. This layout is to be used in congruence with the plans sealed by the engineer of record. TBC is not responsible for the design of the floor system indicated. Please see the engineer's plans for all structural information, bolts/screw/nail pattern, connections, hardware, loading information, etc..

2. For all layouts based on plans not sealed by an engineer:

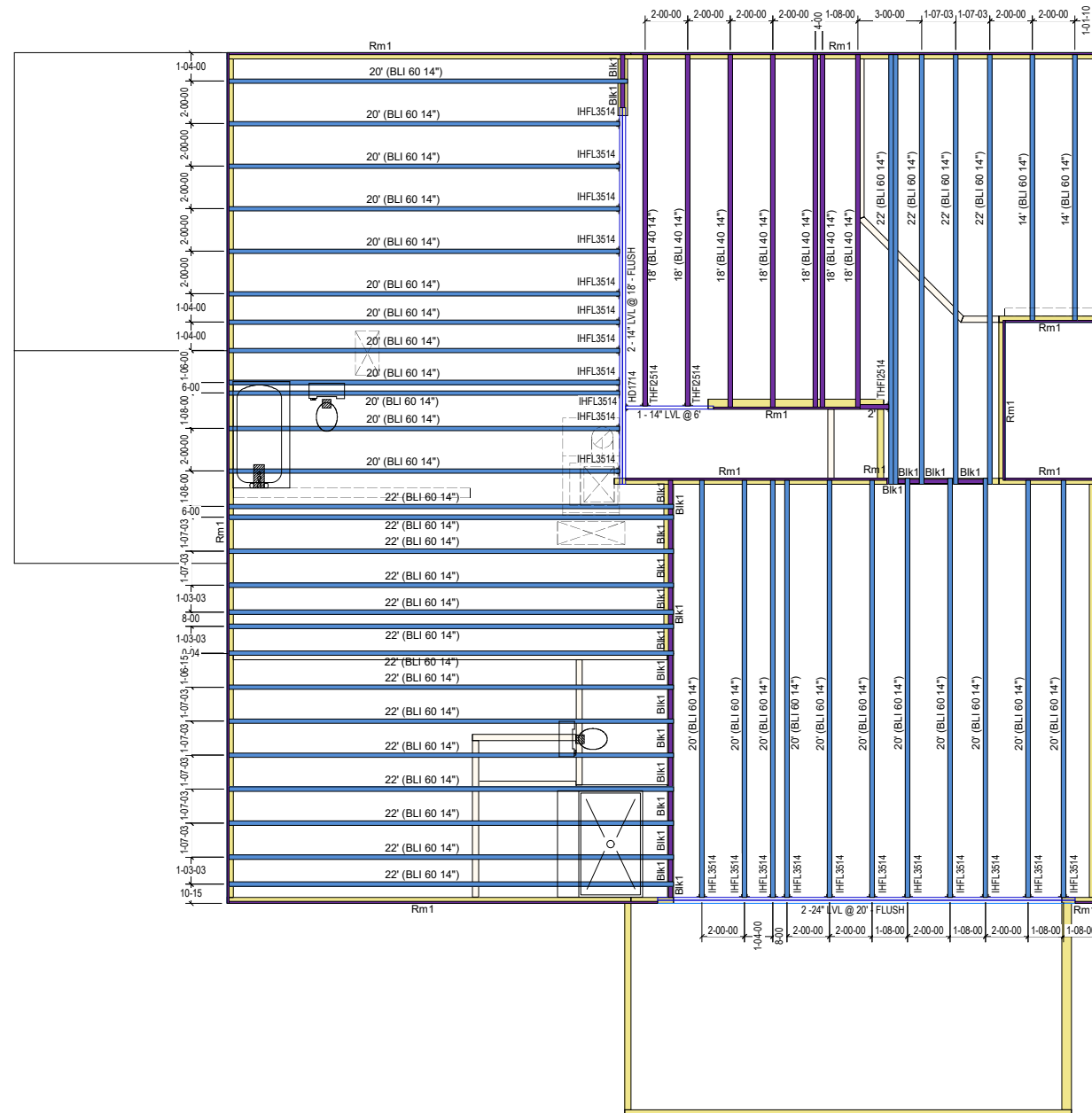
This design is intended to meet NCBC based on the design loadings indicated or not indicated, based on the minimum required loadings per code. All EWP designs are to be reviewed and approved by a structural engineer of record or the general contractor of record prior to installation. It is recommended that all designs are to be reviewed and stamped by a local engineer prior to shipment. Please refer to the Blulinx Installation Guide for all connections, Solid blocking, web filling information, etc. All concentrated loads bearing through the roof and floor systems must be solid blocked in order to avoid any crushing of EWP material.

3. General Installation Notes:

I-Joists require 1 3/4" minimum bearing and should be nailed to the bearing plate with one sinker nail on each side.

I-Joist Rim and onCenter Rimboard could be nailed to the bearing plate with 8d nails @ 6" OC.

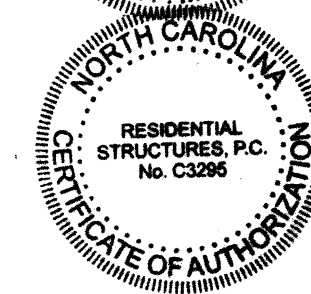
Side Loaded Double I-Joists shall be packed solid and connected with 2 rows od 10d nails @ 12" OC.



2816 'The Kipling'
SECOND FLOOR WAG-9

ProdID	Length	Product	Piles	Net Qty	Fab Type
18' (BLI 40 14")	18-00-00	BLI 40 14"	1	7	MFD
2'	2-00-00	BLI 40 14"	1	1	FF
22' (BLI 60 14")	22-00-00	BLI 60 14"	1	17	MFD
22' (BLI 60 14")	22-00-00	BLI 60 14"	2	2	FF
20' (BLI 60 14")	20-00-00	BLI 60 14"	1	23	MFD
14' (BLI 60 14")	14-00-00	BLI 60 14"	1	2	MFD
2 - 14" LVL @ 18" - FLUSH	18-00-00	onCENTER® LVL 2.0E 1 3/4" x 14"	2	2	MFD
1 - 14" LVL @ 6"	6-00-00	onCENTER® LVL 2.0E 1 3/4" x 14"	1	1	MFD
2 - 24" LVL @ 20" - FLUSH	20-00-00	onCENTER® LVL 2.0E 1 3/4" x 24"	2	2	MFD
Rm1	12-00-00	onCENTER® Rim SE 1 1/8" x 14"	1	15	FF
Blk1	24-00-00	BLI 40 14"	1	1	MFD
Sheathing for DBL Joists*		5/8" Square Edge OSB	1	1	
2x10 for DBL Joists*	22-00-00	2x10 #2 SYP	1	1	

Connector Summary				
Qty	Manuf	Product	Flange	Skew Slope
1		HD1714	None	- -
22		IHF13514	None	- -
3		THF12514	None	- -



RESIDENTIAL STRUCTURES, P.C.
3410 N. Davidson St.
Charlotte, N.C. 28205
Seal For Structural Only

The Building Center
Engineered Wood Division
2nd Floor Placement Plan

Plan:	21-1670 2816 'The Kipling'	
Job:	True Homes Walker Grove 9	
Date:	12/20/2021	Scale: 1/8"=1'-0"
Designed By:	RR	
Checked By:	RR	Revised By:
Sheet:		1 of 1