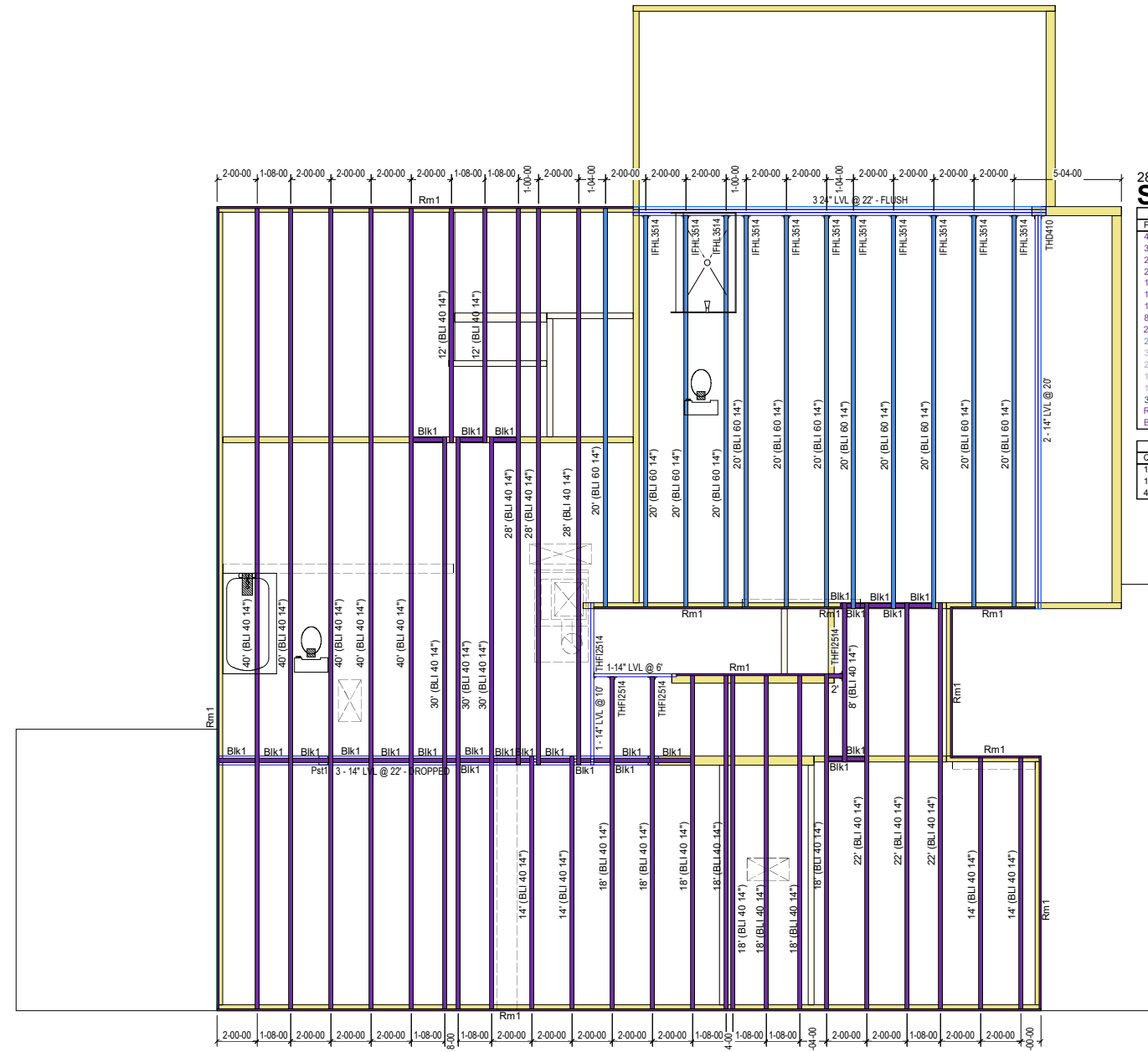


NOTES:
1. For all layouts based on plans that have been sealed by an engineer:
This is a placement plan only. This layout is to be used in congruence with the plans sealed by the engineer of record. TBC is not responsible for the design of the floor system indicated. Please see the engineer's plans for all structural information, bolts/screw/nail pattern, connections, hardware, loading information, etc..

2. For all layouts based on plans not sealed by an engineer:
This design is intended to meet NCBC based on the design loadings indicated or not indicated, based on the minimum required loadings per code. All EWP designs are to be reviewed and approved by a structural engineer of record or the general contractor of record prior to installation. It is recommended that all designs are to be reviewed and stamped by a local engineer prior to shipment. Please refer to the Bluitnx Installation Guide for all connections, Solid blocking, web filling information, etc. All concentrated loads bearing through the roof and floor systems must be solid blocked in order to avoid any crushing of EWP material.

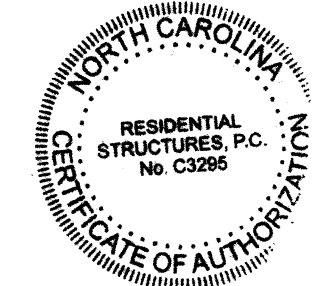
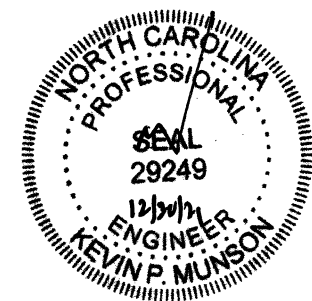
3. General Installation Notes:
I-Joists require 1 3/4" minimum bearing and should be nailed to the bearing plate with one sinker nail on each side.
I-Joist Rim and onCenter Rimboard could be nailed to the bearing plate with 8d nails @ 6" OC.

Side Loaded Double I-Joists shall be packed solid and connected with 2 rows of 10d nails @ 12" OC.



ProdID	Length	Product	Piles	Net Qty	Fab Type
40' (BLI 40 14")	40-00-00	BLI 40 14"	1	3	MFD
30' (BLI 40 14")	30-00-00	BLI 40 14"	1	3	MFD
28' (BLI 40 14")	28-00-00	BLI 40 14"	1	3	MFD
22' (BLI 40 14")	22-00-00	BLI 40 14"	1	3	MFD
18' (BLI 40 14")	18-00-00	BLI 40 14"	1	8	MFD
14' (BLI 40 14")	14-00-00	BLI 40 14"	1	4	MFD
12' (BLI 40 14")	12-00-00	BLI 40 14"	1	2	MFD
8' (BLI 40 14")	8-00-00	BLI 40 14"	1	1	FF
2'	2-00-00	BLI 40 14"	1	1	FF
20' (BLI 60 14")	20-00-00	BLI 60 14"	1	12	MFD
3-14" LVL @ 22" - DROPPED	22-00-00	onCENTER® LVL 2.0E 1 3/4" x 14"	3	3	MFD
2-14" LVL @ 20"	20-00-00	onCENTER® LVL 2.0E 1 3/4" x 14"	2	2	MFD
1-14" LVL @ 10"	10-00-00	onCENTER® LVL 2.0E 1 3/4" x 14"	1	1	MFD
1-14" LVL @ 6"	6-00-00	onCENTER® LVL 2.0E 1 3/4" x 14"	1	1	MFD
3 24" LVL @ 22" - FLUSH	22-00-00	onCENTER® LVL 2.0E 1 3/4" x 24"	3	3	MFD
Rm1	12-00-00	onCENTER® Rim SE 1 1/8" x 14"	1	13	FF
Bik1	30-00-00	BLI 40 14"	1	1	MFD

Qty	Manuf	Product	Flange	Skew	Slope
11		IFHL3514	None	-	-
1		THD410	Reverse	-	-
4		THF2514	None	-	-



RESIDENTIAL STRUCTURES, P.C.
3410 N. Davidson St.
Charlotte, N.C. 28205
Seal For Structural Only

The Building Center
Engineered Wood Division

2nd Floor Placement Plan

Plan: **21-1685**
2813 'The Kipling'

Job: **True Homes**
Walker Grove 7

Date: 12/27/2021 Scale: 1/8"=1'-0"

Designed By: RR

Checked By: RR Revised By:

Sheet: **1 of 1**